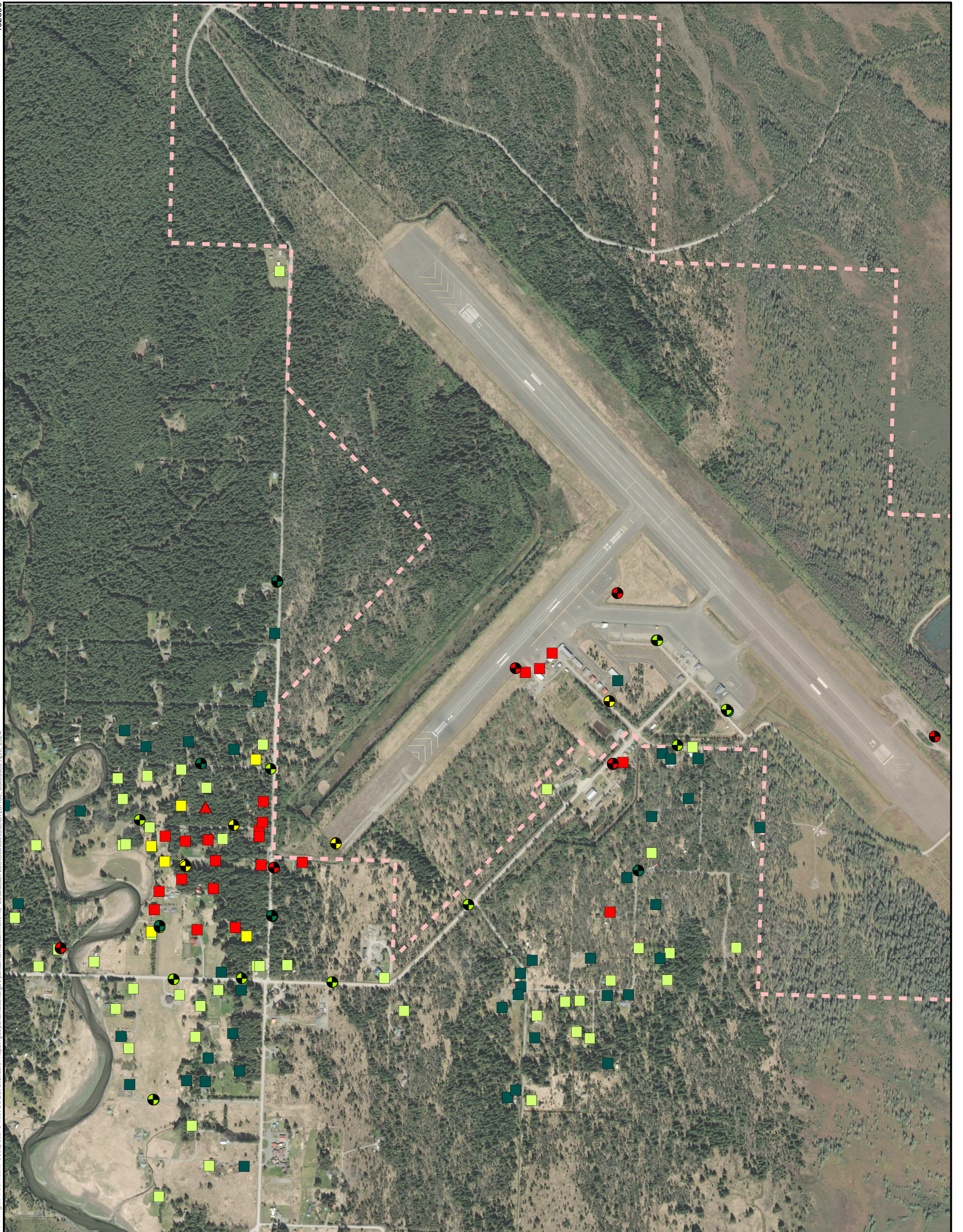


102599



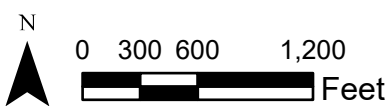
LEGEND

Private Well Sample Location

- PFOS & PFOA not detected
- PFOS &/or PFOA detected below monitoring criteria (<17.5 ng/L)
- 17.5 to 69 ng/L
- ≥ 70 ng/L (over DEC action level)
- ▲ Property affected before April 2019, compared to former DEC action level*

Monitoring Well Sample Location

- PFOS & PFOA not detected
- PFOS &/or PFOA detected below monitoring criteria (<17.5 ng/L)
- 17.5 to 69 ng/L
- ≥ 70 ng/L (over DEC action level)
- - - Airport Property Boundary



NOTES:

1. Current DEC action level is 70 ng/L for the sum of PFOS + PFOA.
 2. Sample results reported as highest for a location based on historical results and may not represent current levels for a given area.
 3. Data represented in this map was collected from 2018 to current and does not reflect frequency of resampling.
- * Former DEC action level was 70 ng/L for the sum of five PFAS.
ng/L = nanograms per liter

**MAXIMUM PFOS+PFOA RESULTS
AS OF APRIL 2024
Figure 1**

Path: T:\GIS_Projects\Statewide PFAS\Gustavus\Maps\Website\Map.aprx User: TXG Date: 4/9/2024
 Imagery provided by Maxar Products. Dynamic Mesac © 2020 Maxar Technologies Inc., Alaska Geospatial Office, USGS, available: <https://geoportal.alaska.gov/portal/home/item.html?id=b6cdda872a6458085e95061a7231f68>, accessed April, 2024.