



U.S. Department
of Transportation

Federal Highway Administration

Environmental Flow Charts

December 1998

Table of Contents

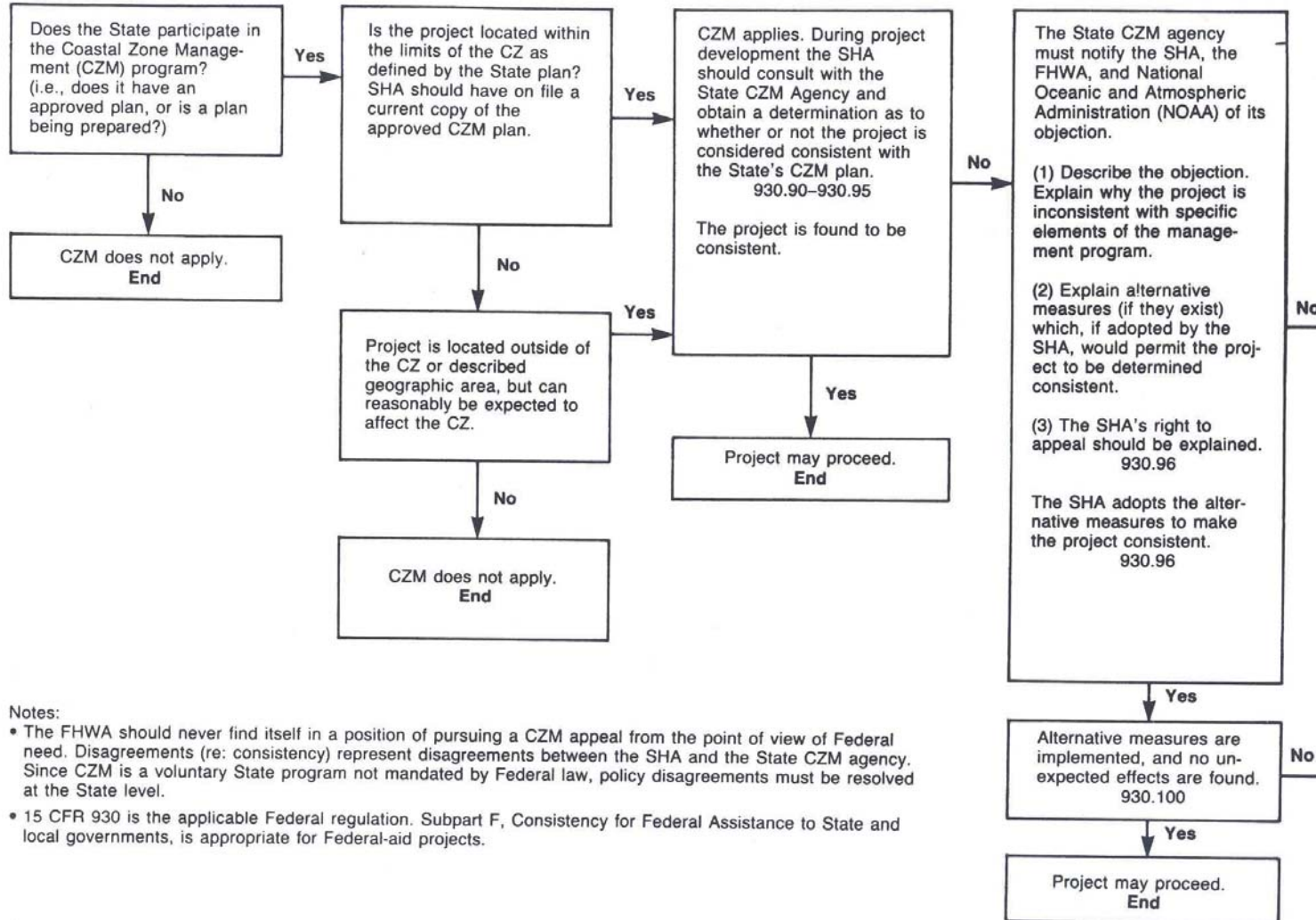
(All sections are located in alphabetical order)

LIST OF ABBREVIATIONS	iii	HISTORIC PRESERVATION	HP
COASTAL ZONE MANAGEMENT	CZM	SOCIO-ECONOMIC IMPACT	SE
ENDANGERED SPECIES	ES	VISUAL IMPACT	V
FISH AND WILDLIFE COORDINATION	FWC	WATER QUALITY	WQ
FLOODPLAINS	FP	WETLANDS	W
HAZARDOUS WASTE	HW	WILD AND SCENIC RIVERS	WSR
HIGHWAY TRAFFIC NOISE	N		

**ABBREVIATIONS
USED IN THE ENVIRONMENTAL
FLOW CHARTS**

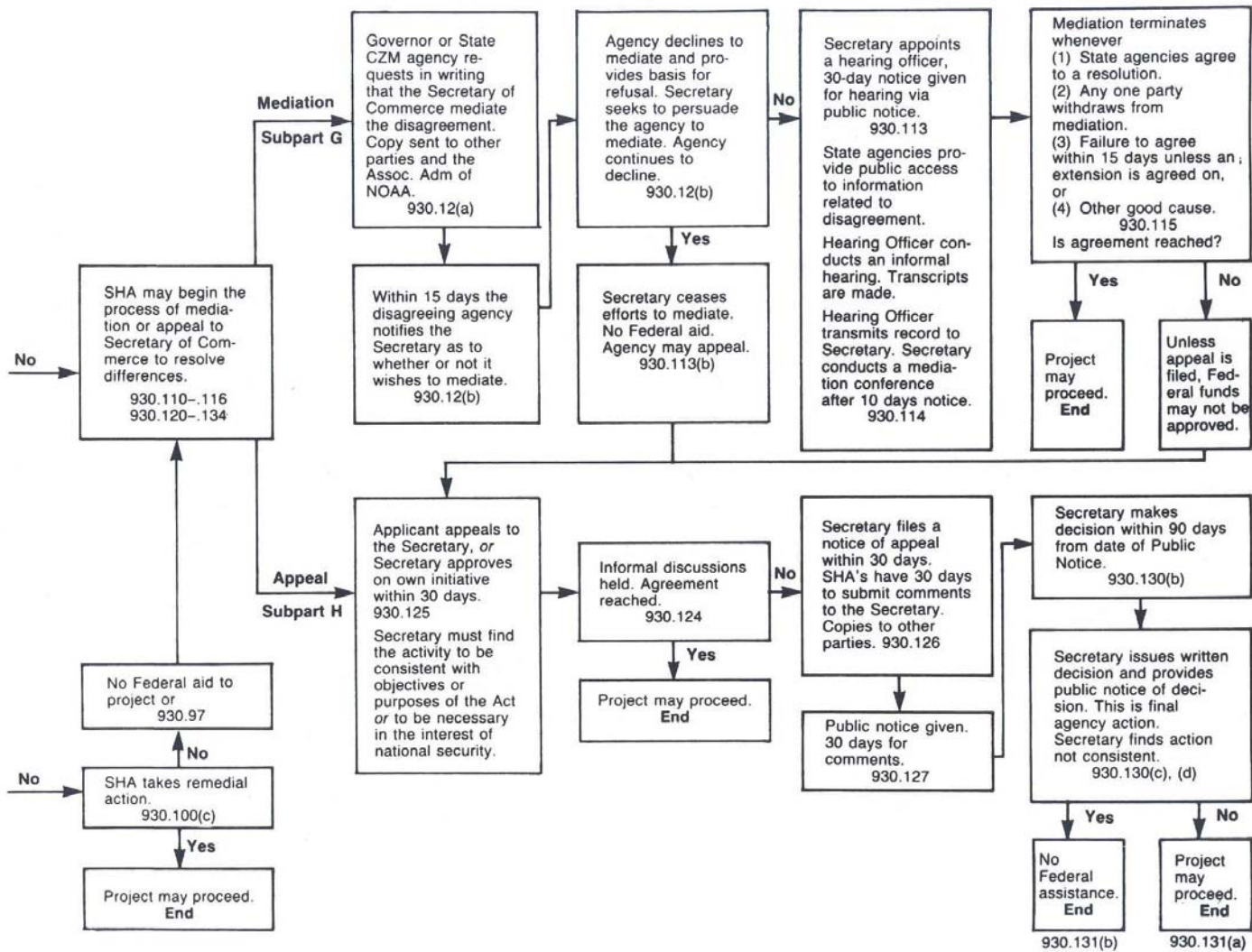
ACHP	Advisory Council on Historic Preservation	FWS	Fish and Wildlife Service
BA	Biological Assessment	HC	Hydrocarbons
BMP	Best Management Practices	MOA	Memorandum of Agreement
CBR	Coastal Barrier Resources	MPO	Metropolitan Planning Organization
CBRA	Coastal Barrier Resources Act	NAAQS	National Ambient Air Quality Standards
CE	Categorical Exclusion	NEPA	National Environmental Policy Act
CEA	Council of Economic Advisors	NFIP	National Flood Insurance Program
CH	Critical Habitat	NMFS	National Marine Fisheries Service
CO	Carbon Monoxide	NOAA	National Oceanic and Atmospheric Administration
COE	Corps of Engineers	NO	Nitrogen Oxides
CZ	Coastal Zone	NPL	National Priorities List
CZM	Coastal Zone Management	NPS	National Park Service
DOI	Department of the Interior	NR	National Register of Historic Places
EA	Environmental Assessment	PE	Preliminary Engineering
EIS	Environmental Impact Statement	PL	Public Law
EO	Executive Order	RFW	Regulatory Floodway
EPA	Environmental Protection Agency	ROW	Right-of-Way
ESA	Endangered Species Act	NRCS	Natural Resources Conservation Service
FEMA	Federal Emergency Management Agency	SHA	State Highway Administration
FHBM	Flood Hazard Boundary Map	SHPO	State Historic Preservation Officer (Office)
FHWA	Federal Highway Administration	SIP	State Implementation Plan
FIA	Federal Insurance Administration	TIP	Transportation Implementation Plan
FIF	Flood Insurance Fund	TCM	Transportation Control Measures
FIRM	Flood Insurance Rate Map	TVA	Tennessee Valley Authority
FONSI	Finding of No Significant Impact	FTA	Federal Transit Administration
FPPA	Farmland Protection Policy Act	USDA	United States Department of Agriculture
FWCA	Fish and Wildlife Coordination Act	USGS	United States Geological Survey

Coastal Zone Management



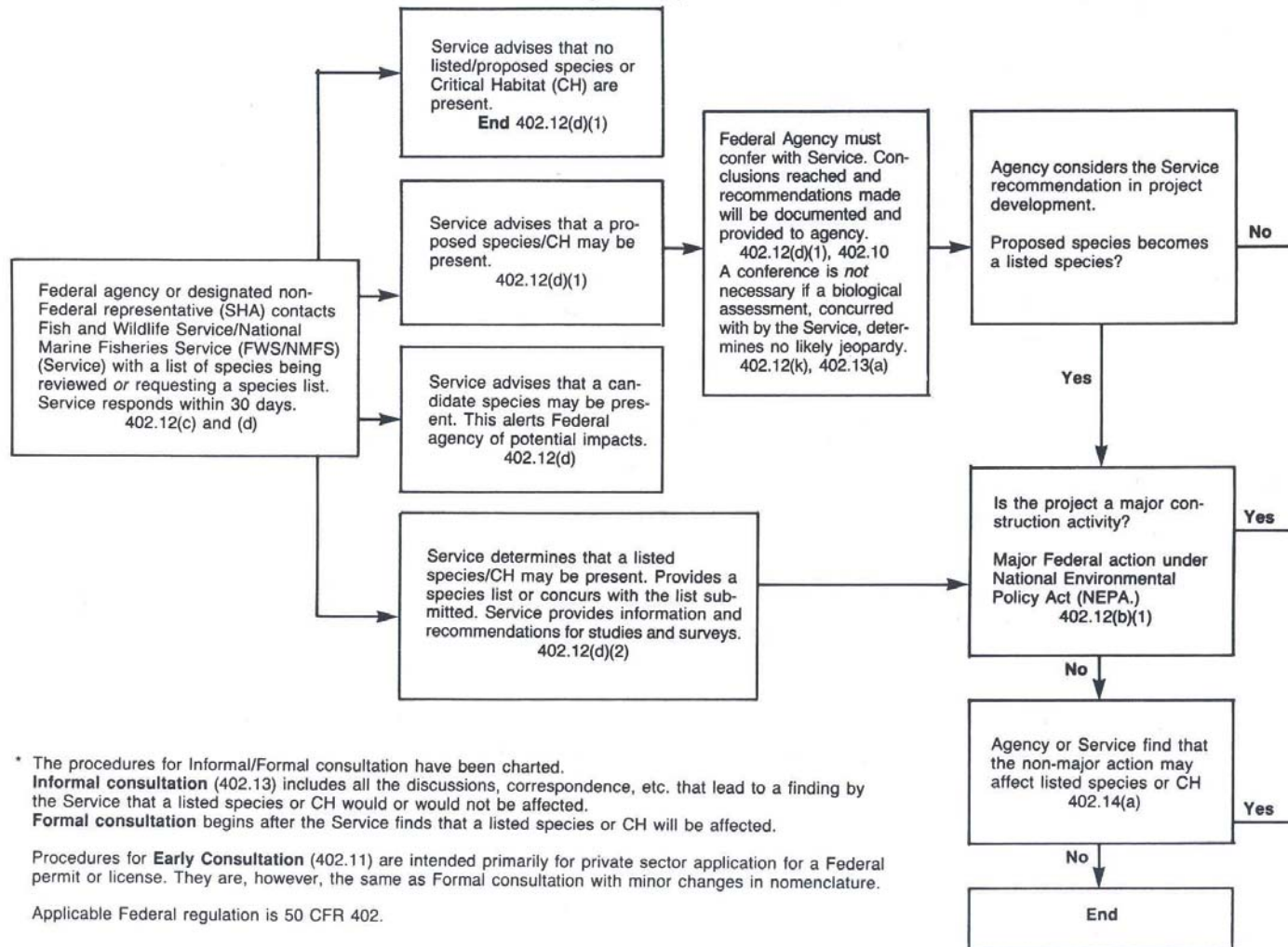
Notes:

- The FHWA should never find itself in a position of pursuing a CZM appeal from the point of view of Federal need. Disagreements (re: consistency) represent disagreements between the SHA and the State CZM agency. Since CZM is a voluntary State program not mandated by Federal law, policy disagreements must be resolved at the State level.
- 15 CFR 930 is the applicable Federal regulation. Subpart F, Consistency for Federal Assistance to State and local governments, is appropriate for Federal-aid projects.



January, 1988

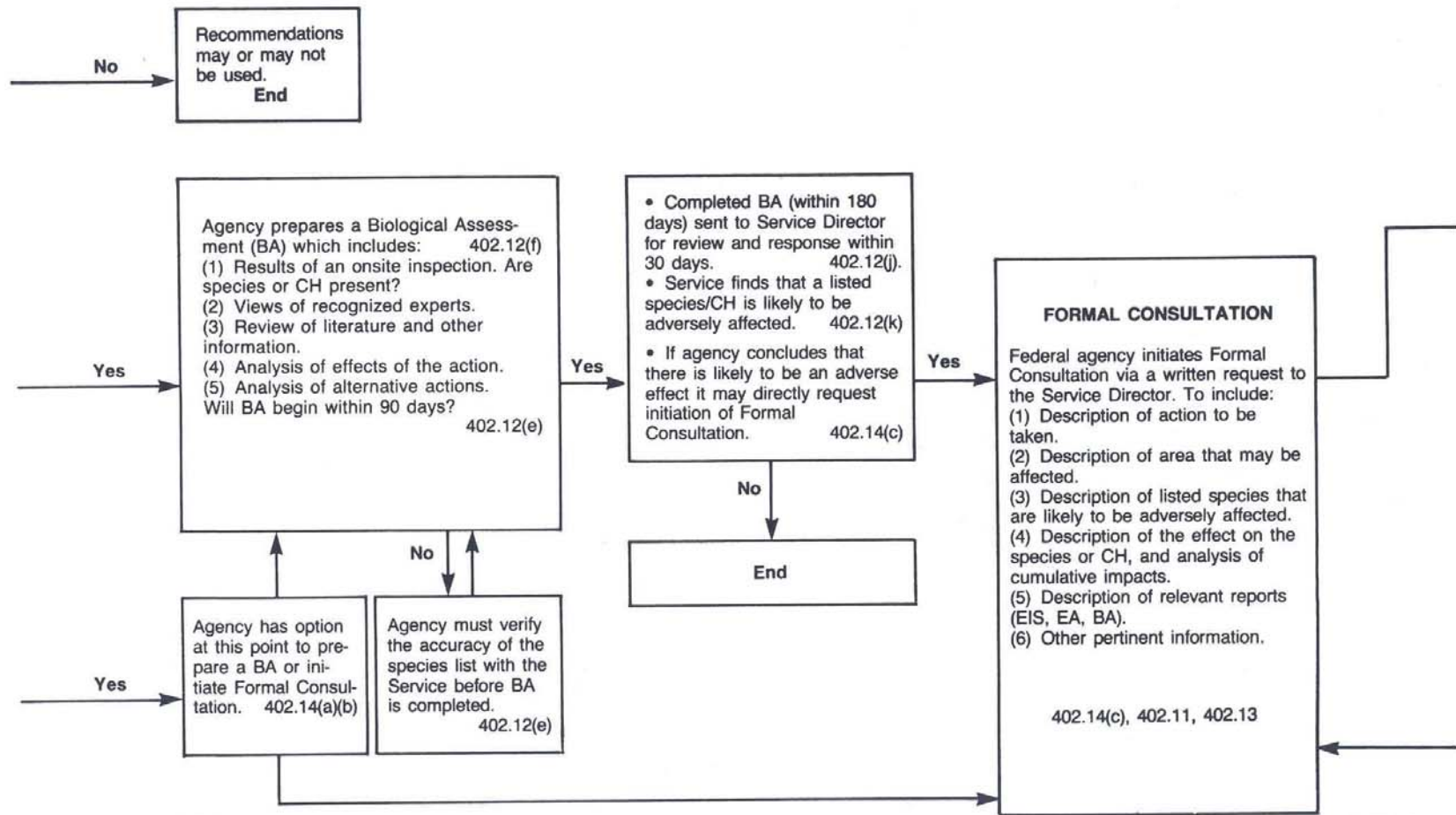
Endangered Species*

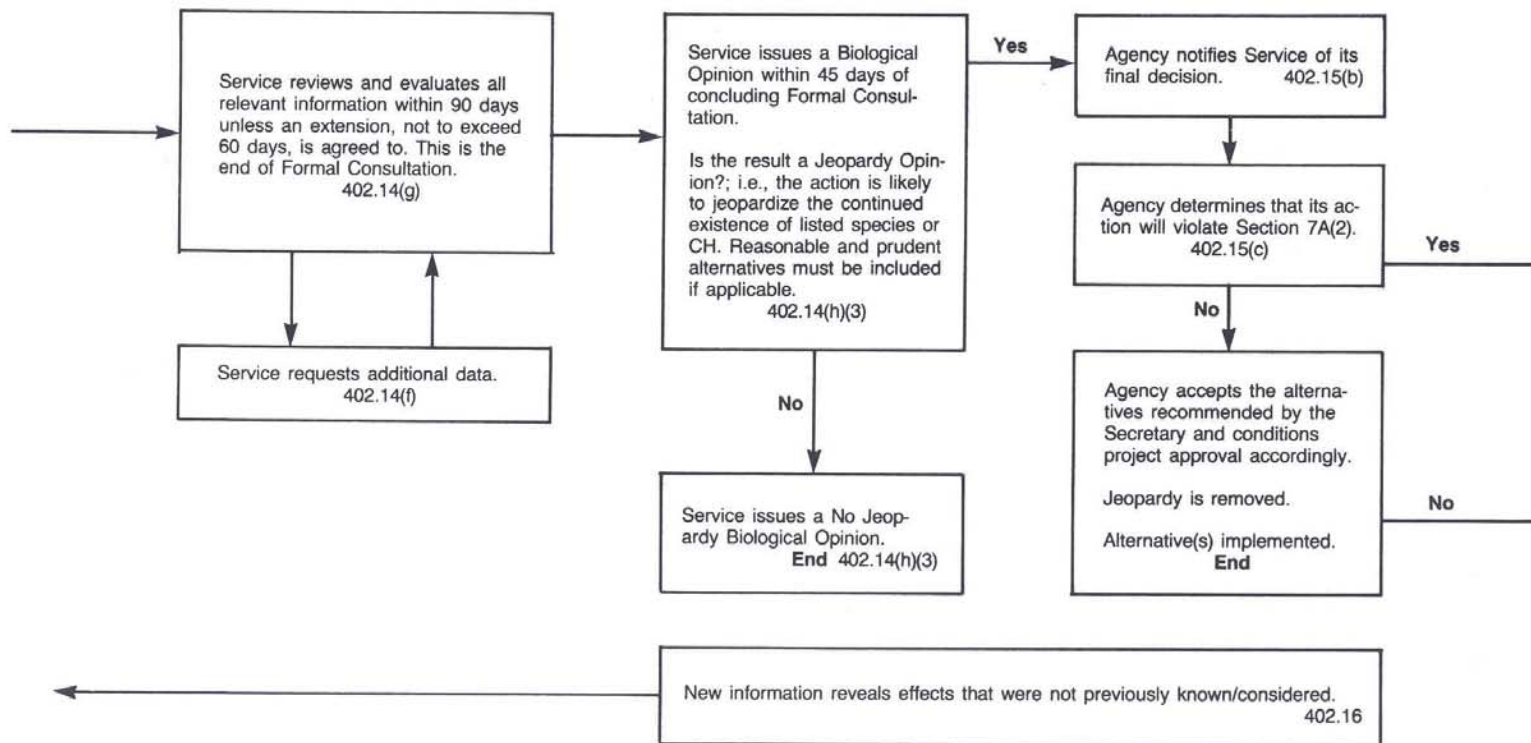


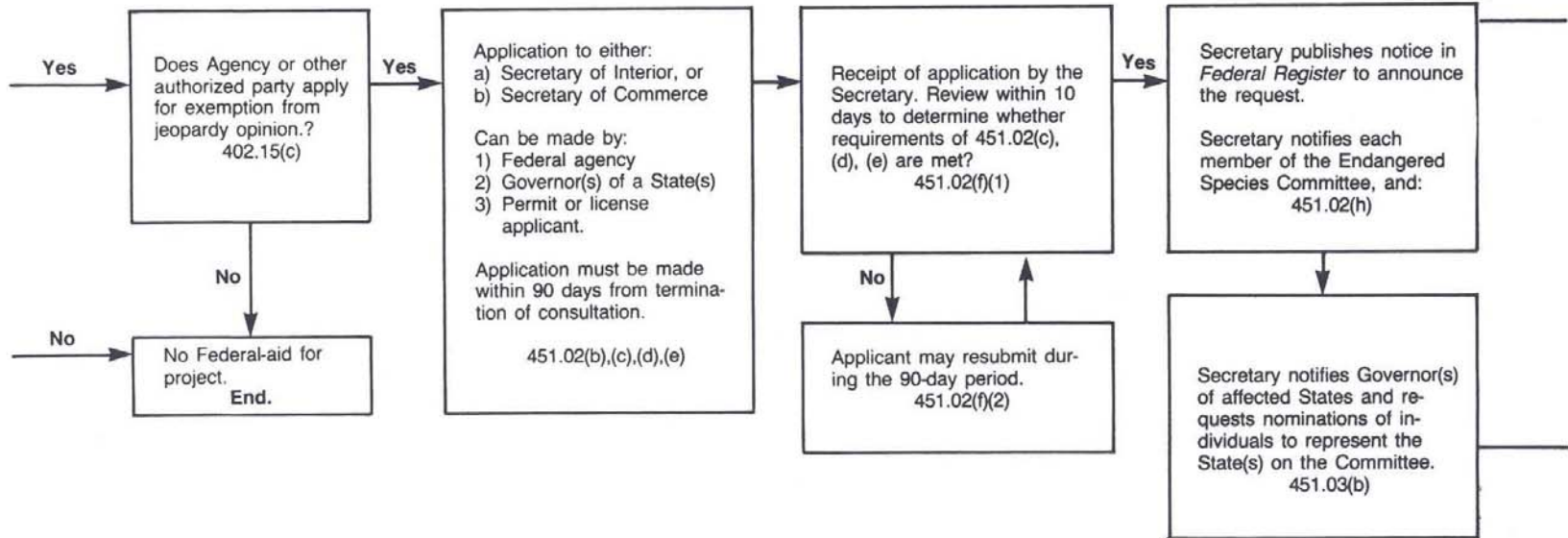
* The procedures for Informal/Formal consultation have been charted. **Informal consultation** (402.13) includes all the discussions, correspondence, etc. that lead to a finding by the Service that a listed species or CH would or would not be affected. **Formal consultation** begins after the Service finds that a listed species or CH will be affected.

Procedures for **Early Consultation** (402.11) are intended primarily for private sector application for a Federal permit or license. They are, however, the same as Formal consultation with minor changes in nomenclature.

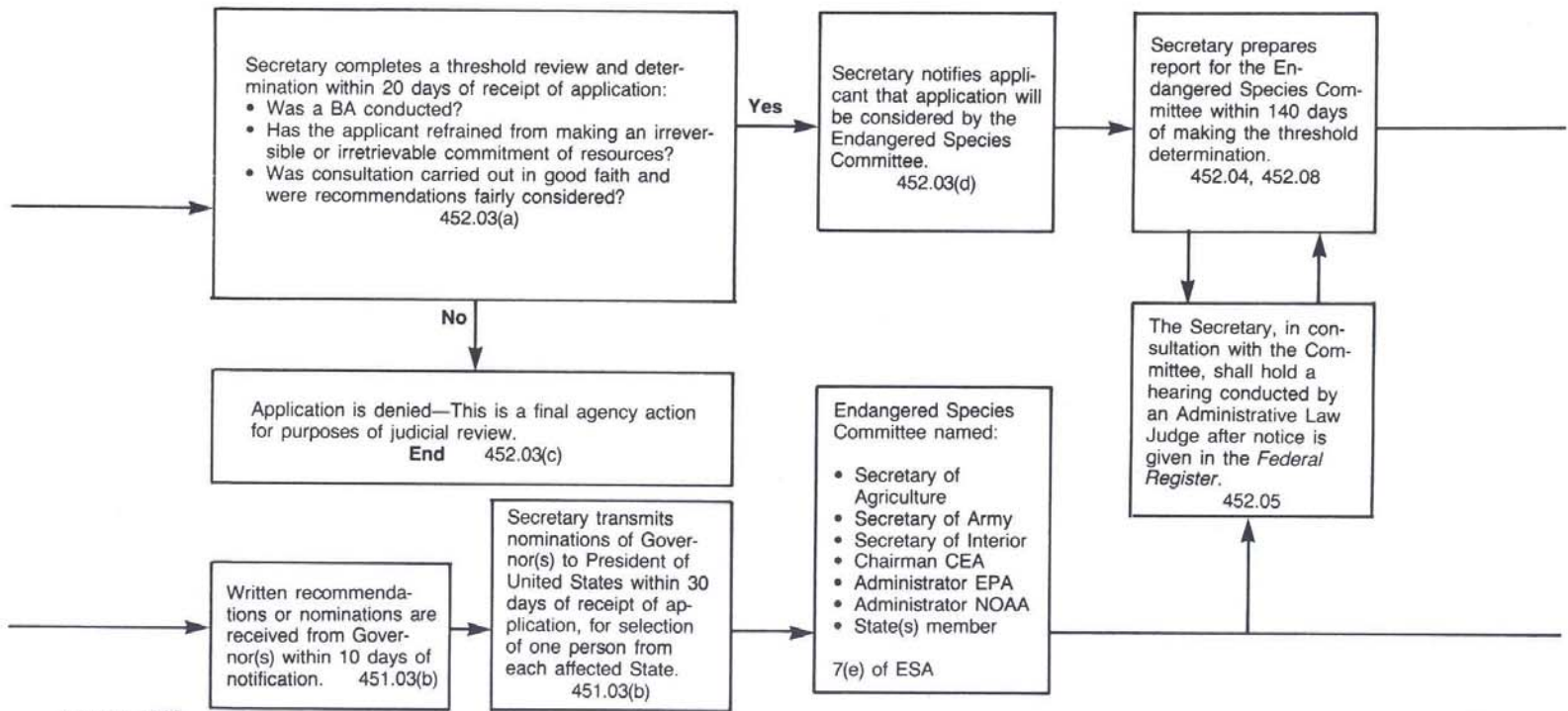
Applicable Federal regulation is 50 CFR 402.



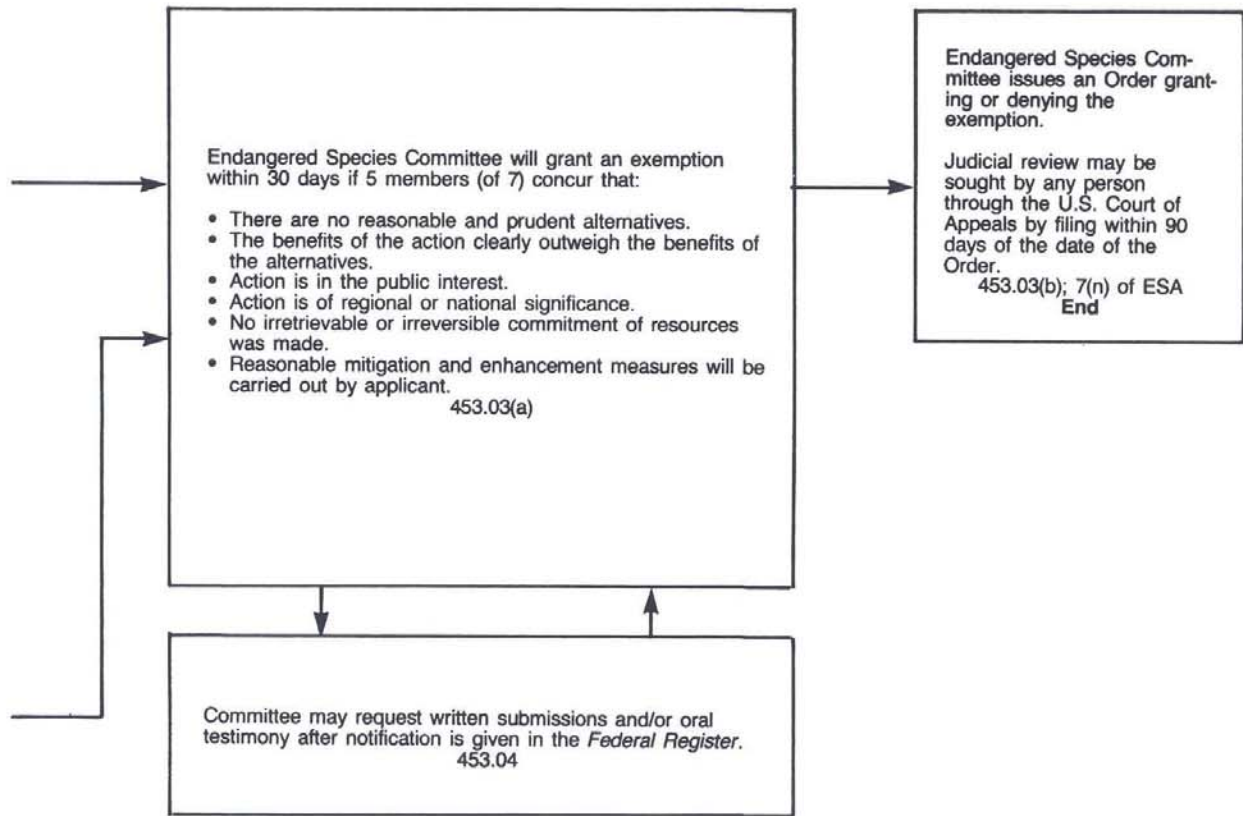




January, 1988



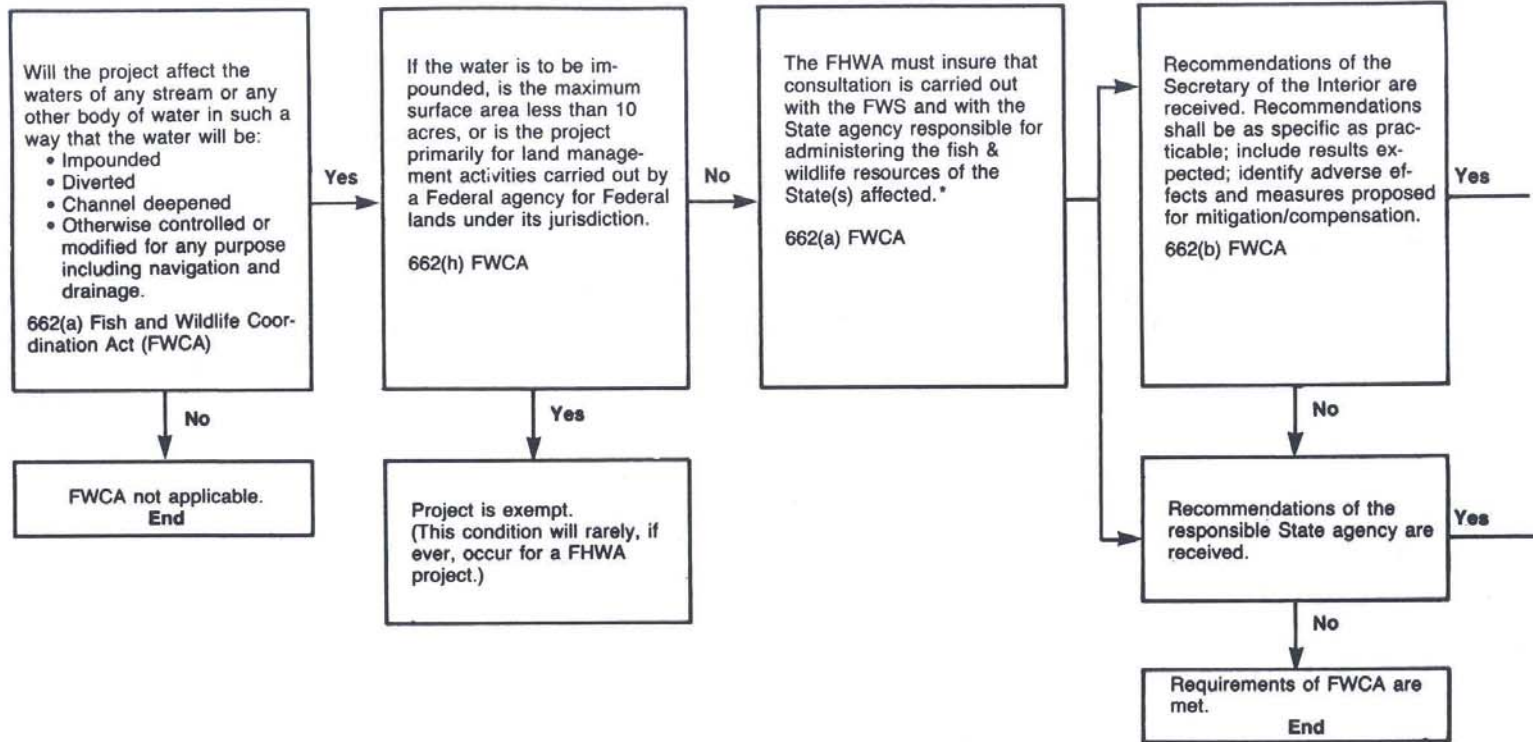
January, 1988



January, 1988

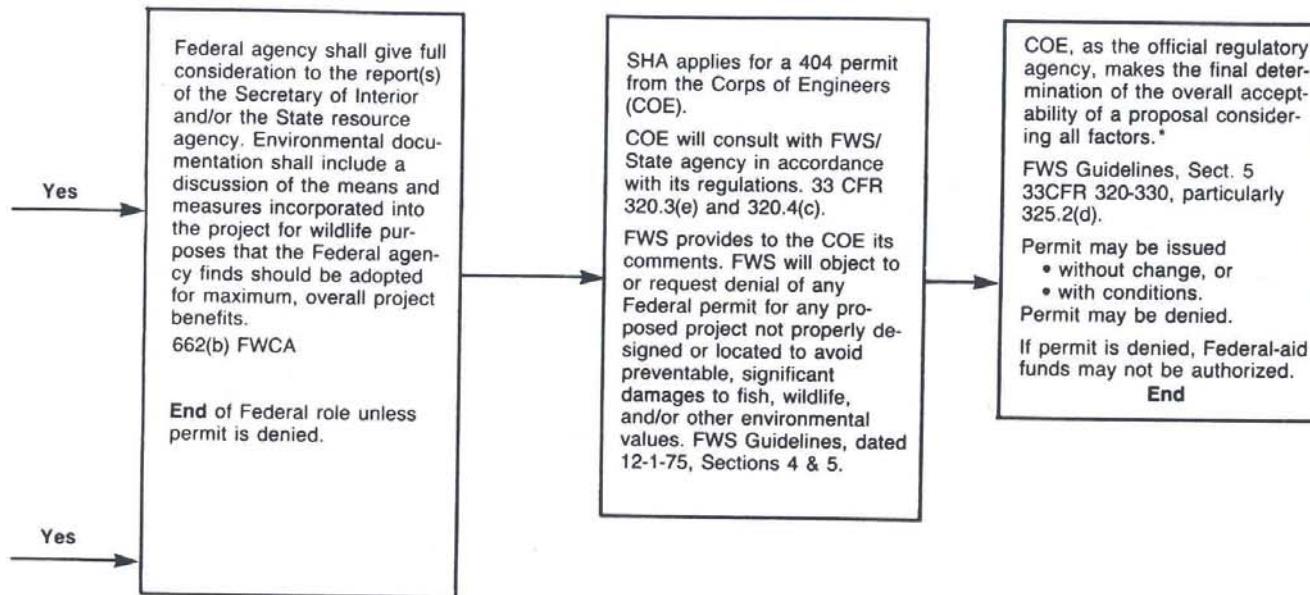
ES-6 of 6

Fish and Wildlife Coordination



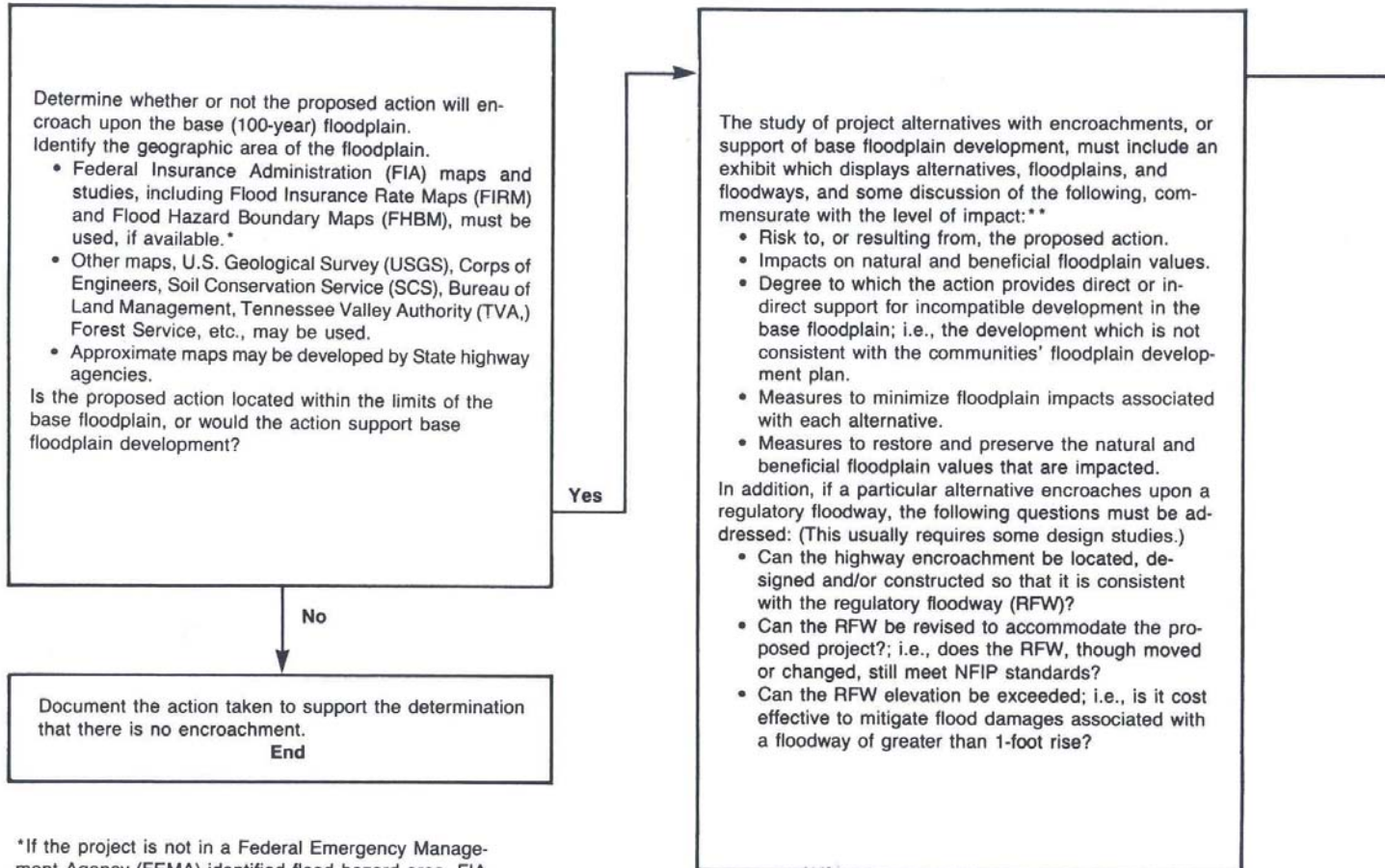
*If the proposed project affects water resources that are covered by the FWCA, it should be recognized that a 404 permit will also be required. If the recommendations of the FWS/State agency can be accommodated and a mitigation commitment made in the environmental document, then the re-examination of FWCA issues at the 404 permit stage should be routine unless project or policy change has occurred. If resolution cannot be obtained during the environmental process, then the objection of the FWS/State agency can be expected at permit time.

*Section references to 16 USC 661-667(d).



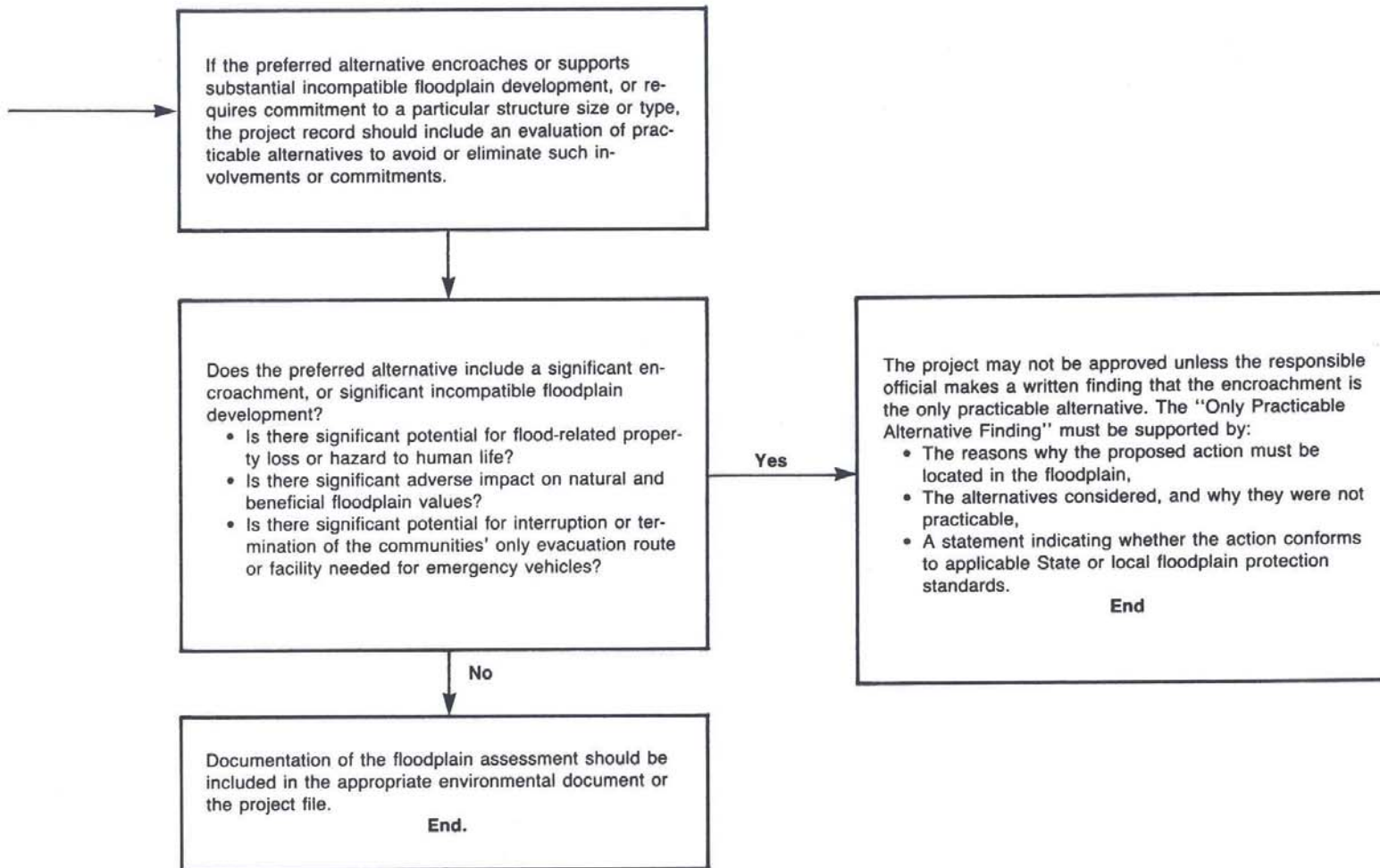
*The EPA may review the permit and if necessary, veto it in accordance with Section 404(c) of the Clean Water Act.

Floodplains

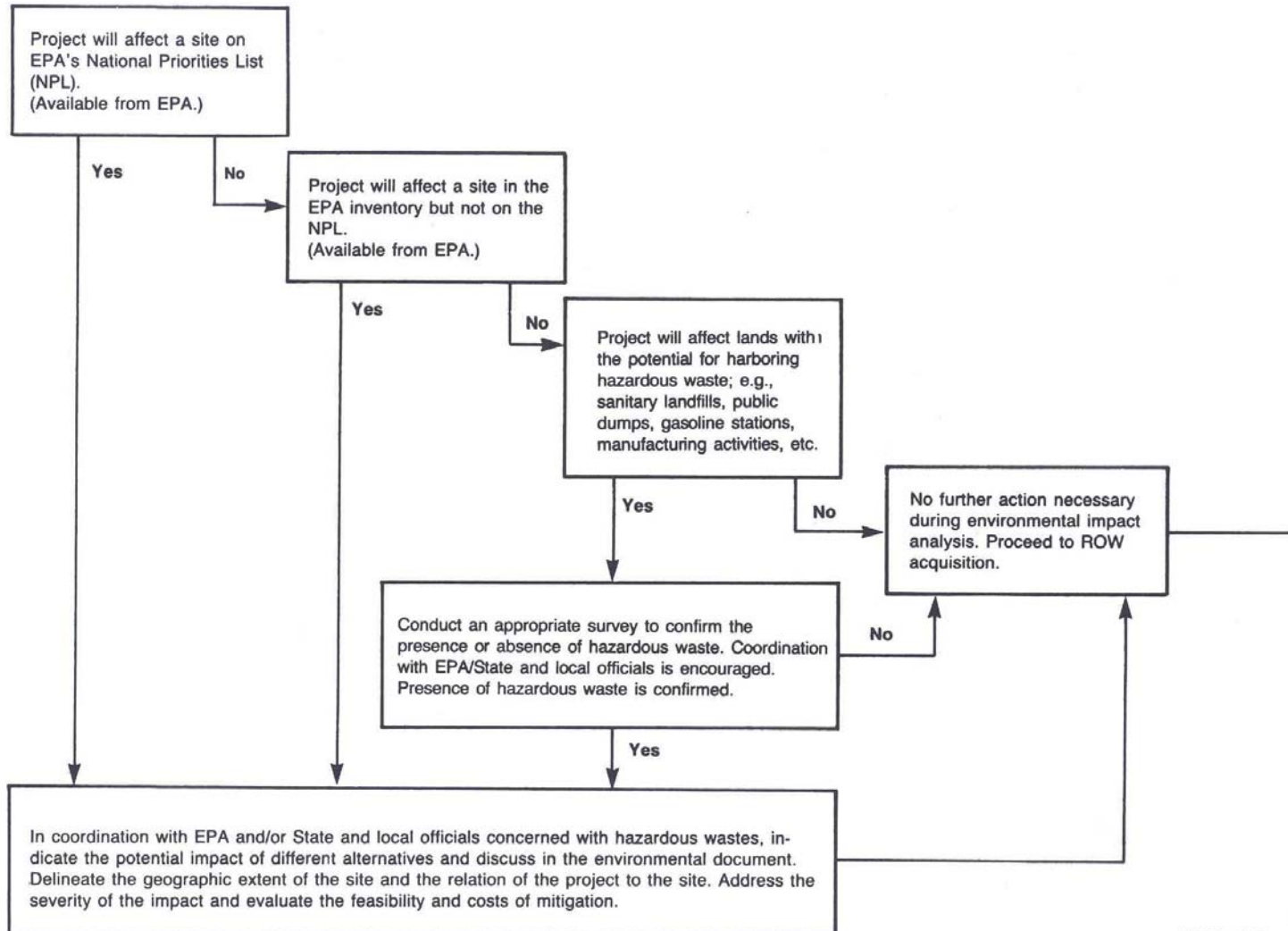


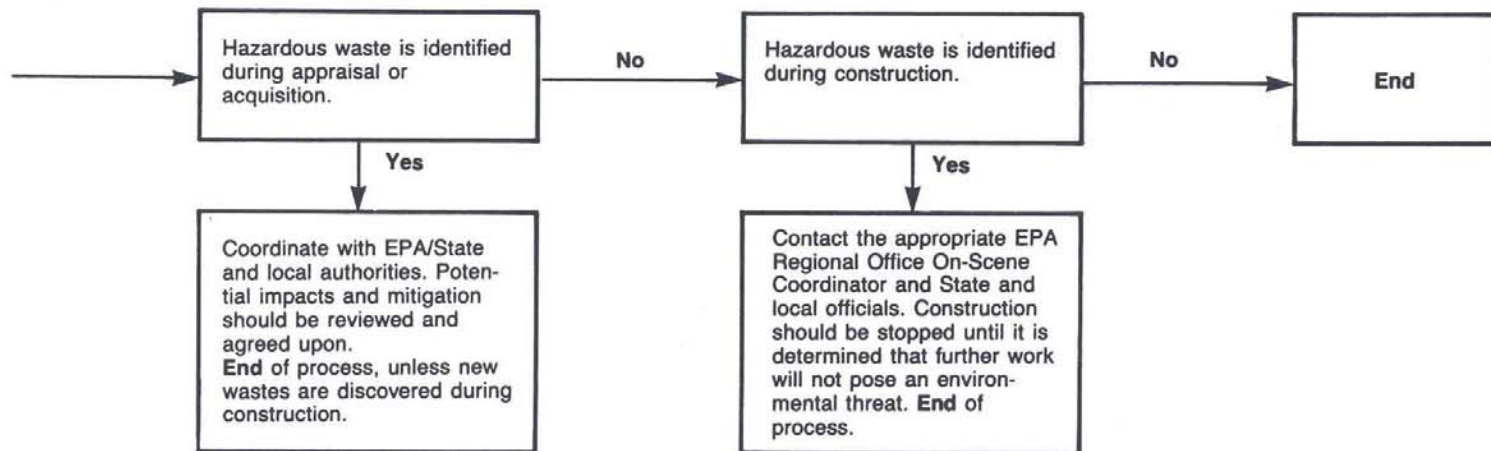
*If the project is not in a Federal Emergency Management Agency (FEMA) identified flood hazard area, FIA maps will not be available and other sources should be used. FHPM 6-7-3-2 shall be followed.

**Further discussion of required location hydraulic studies is found in FHPM 6-7-3-2.

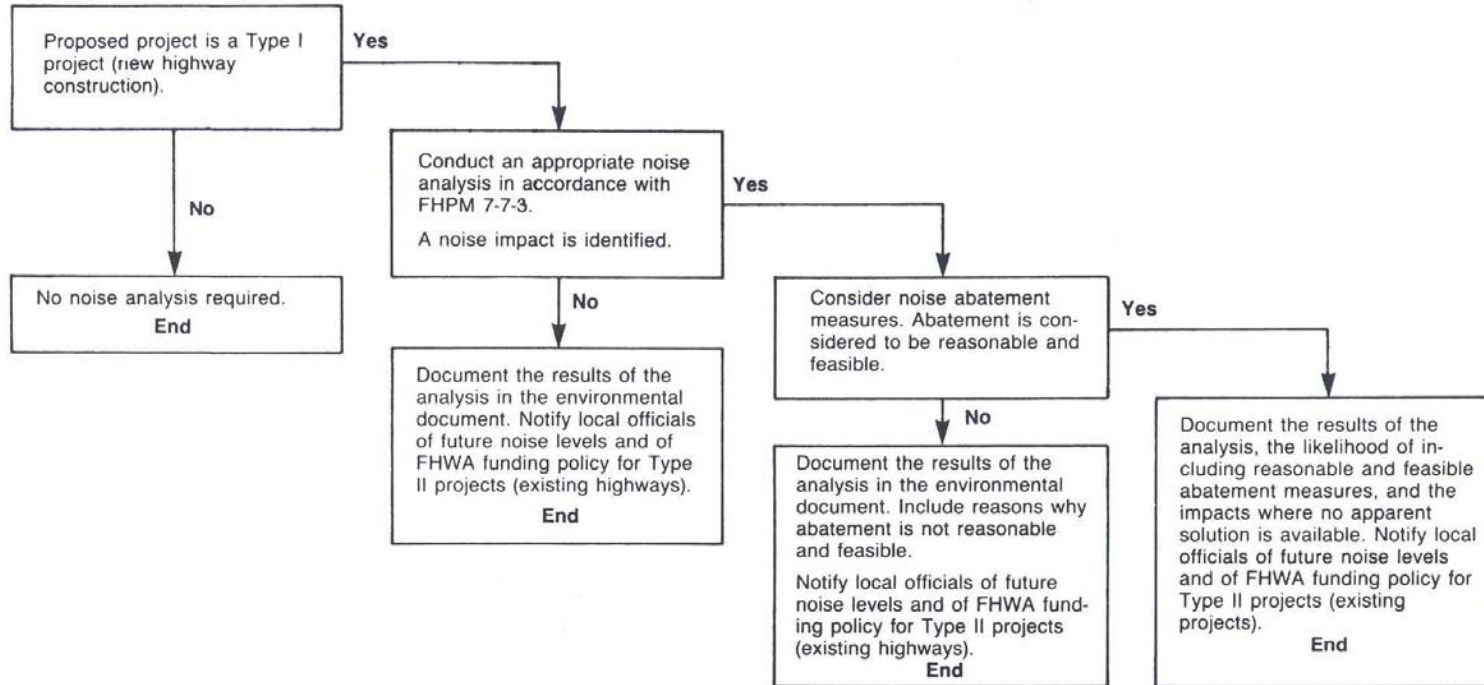


Hazardous Waste

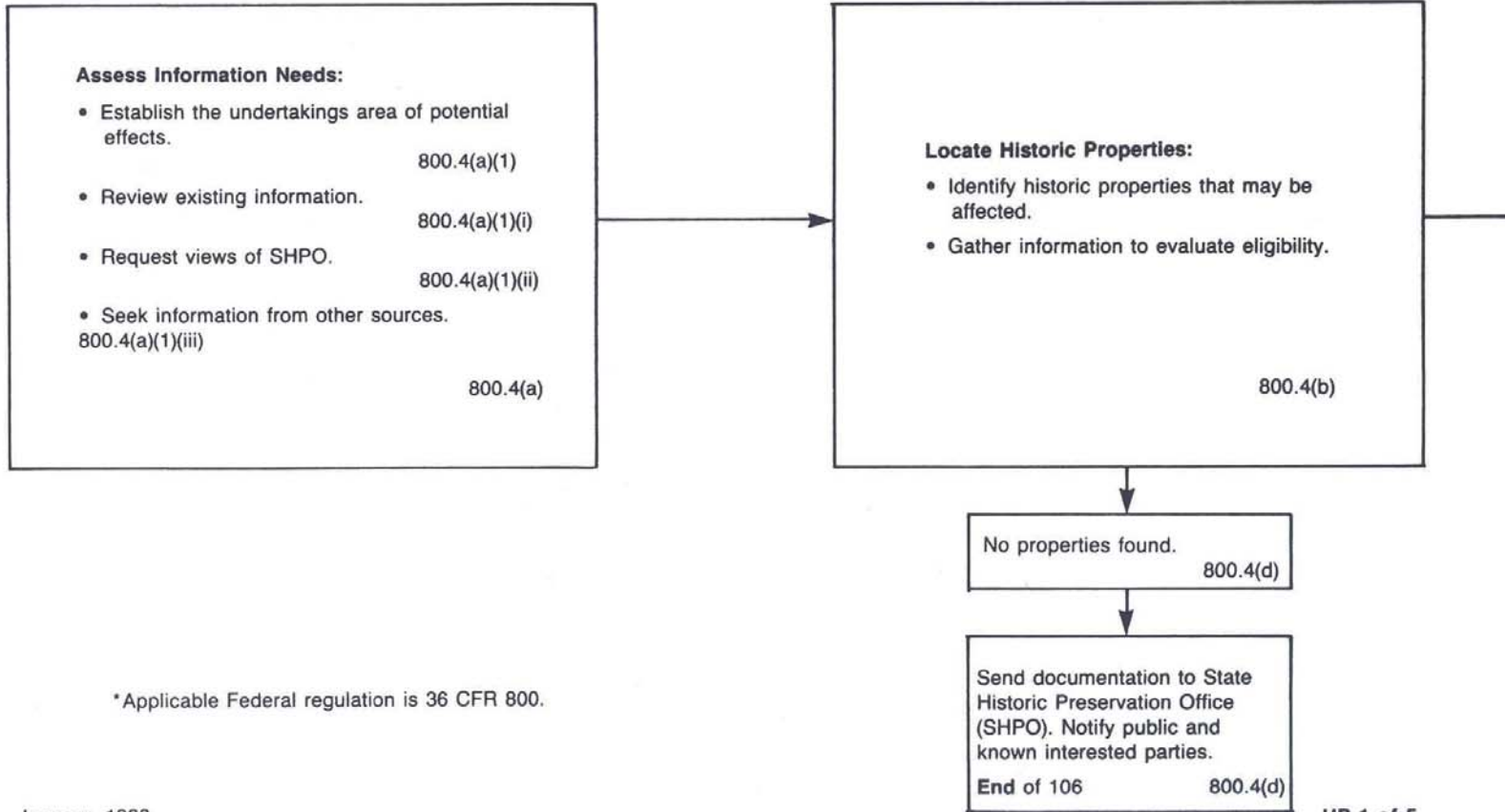


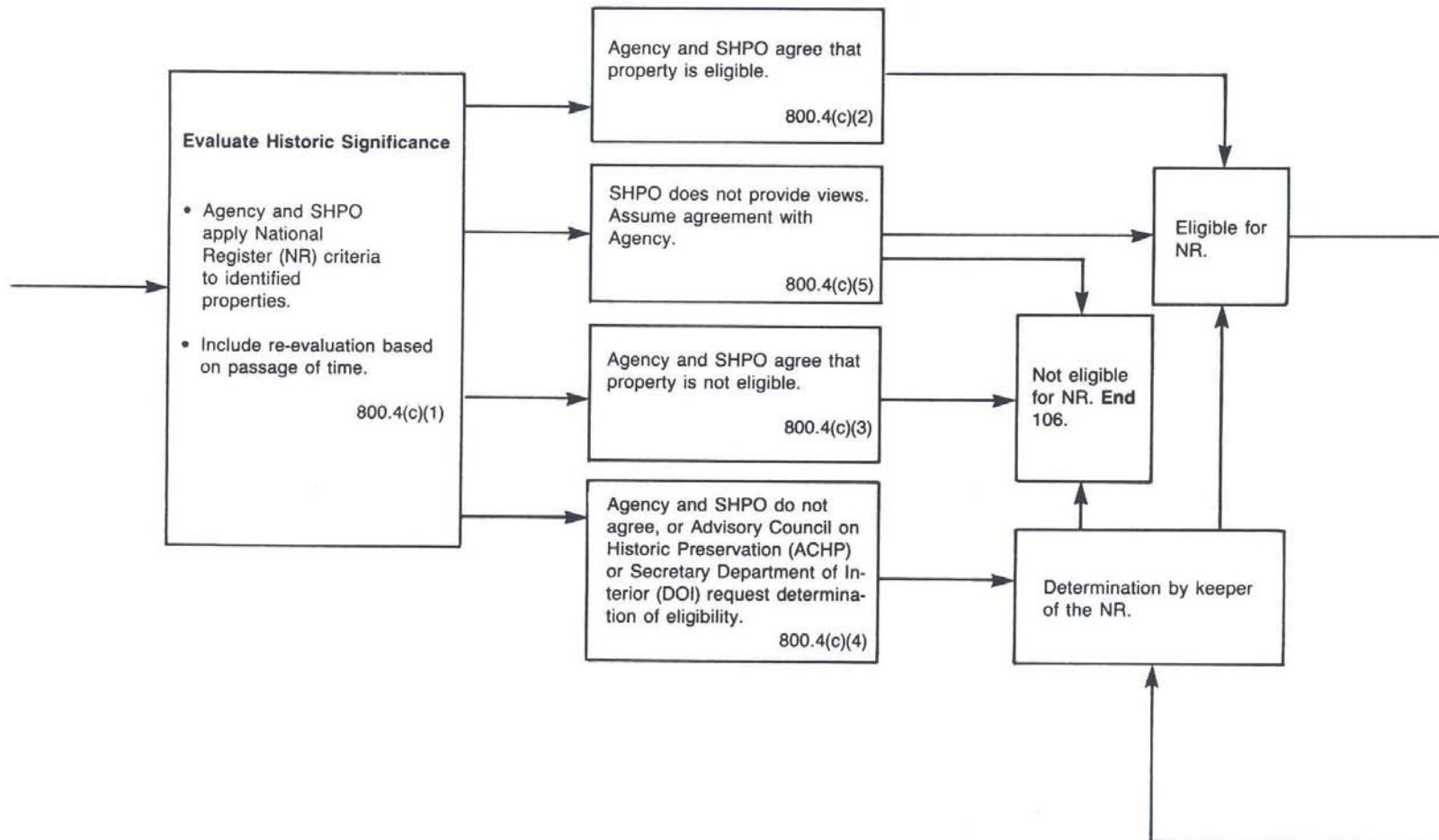


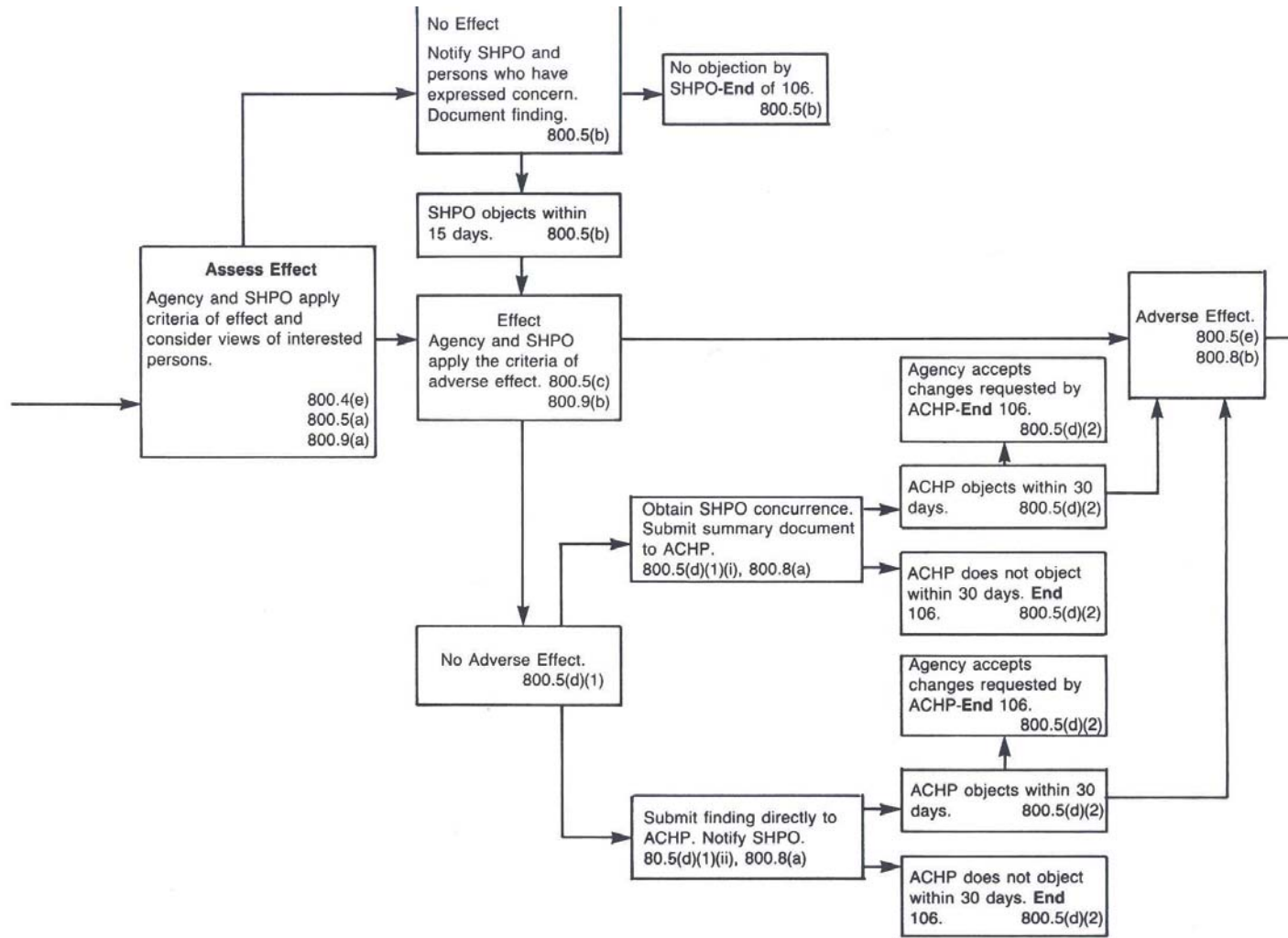
Highway Traffic Noise

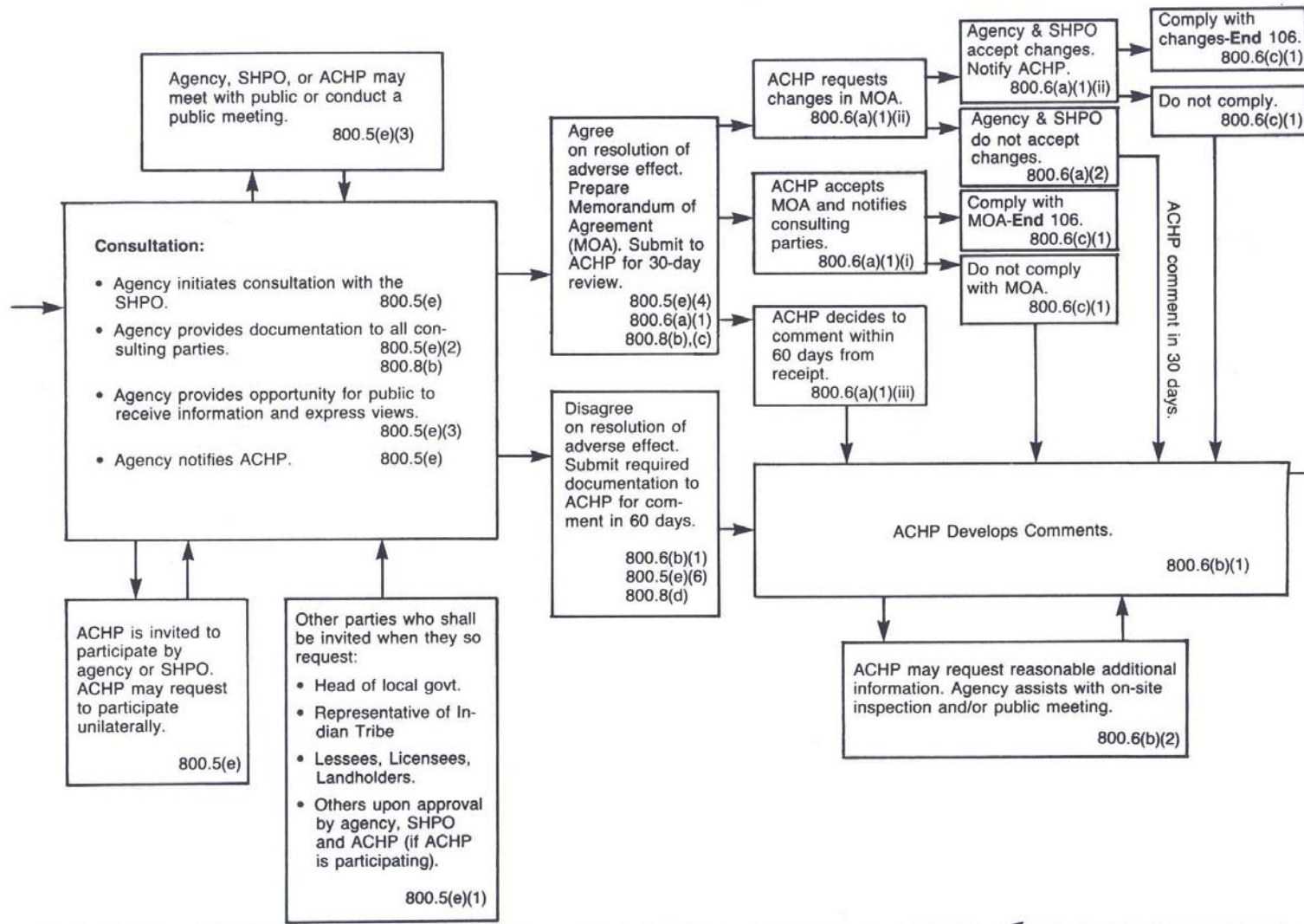


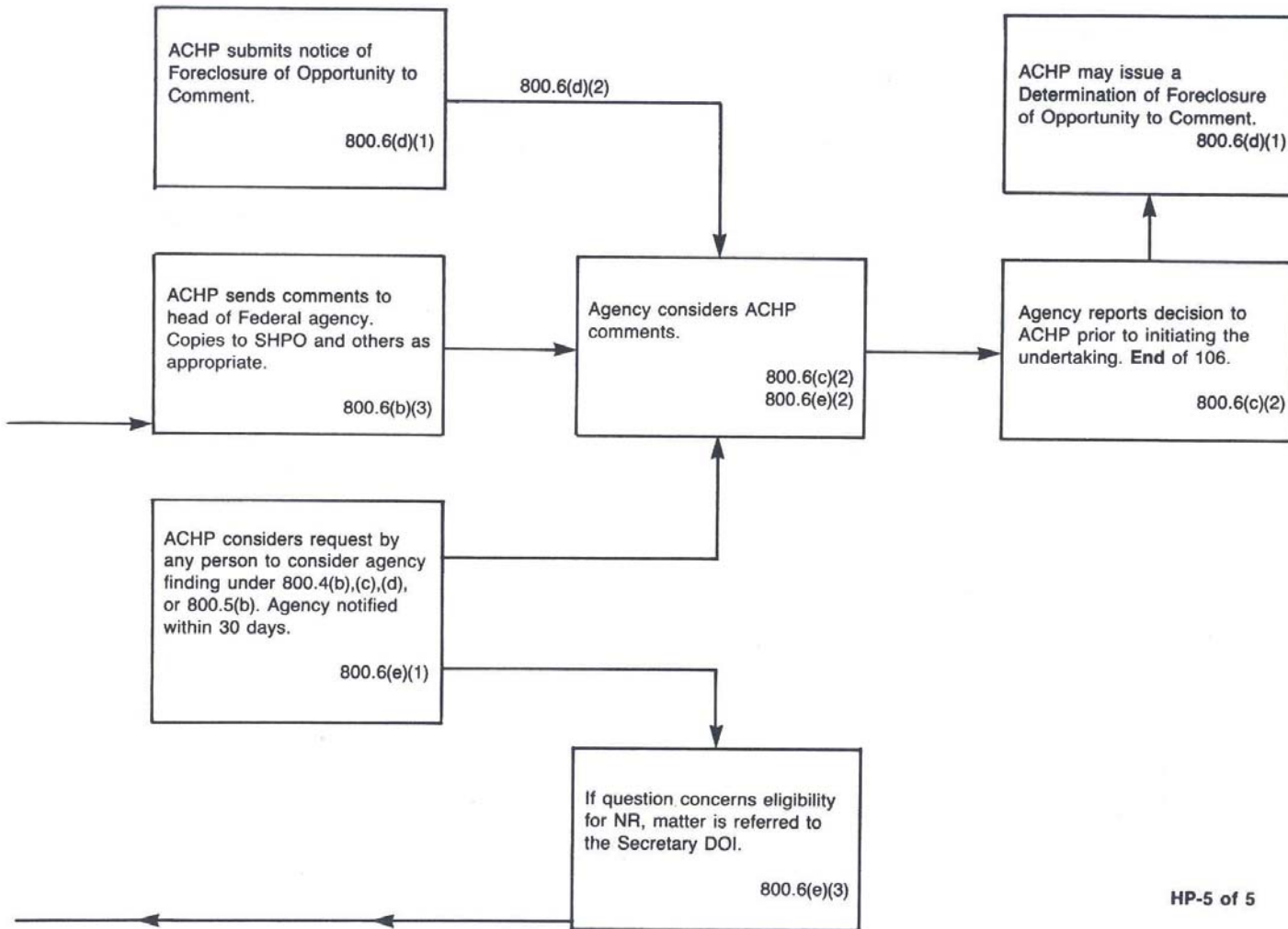
Historic Preservation
(Sect. 106 of National Historic Preservation Act)*





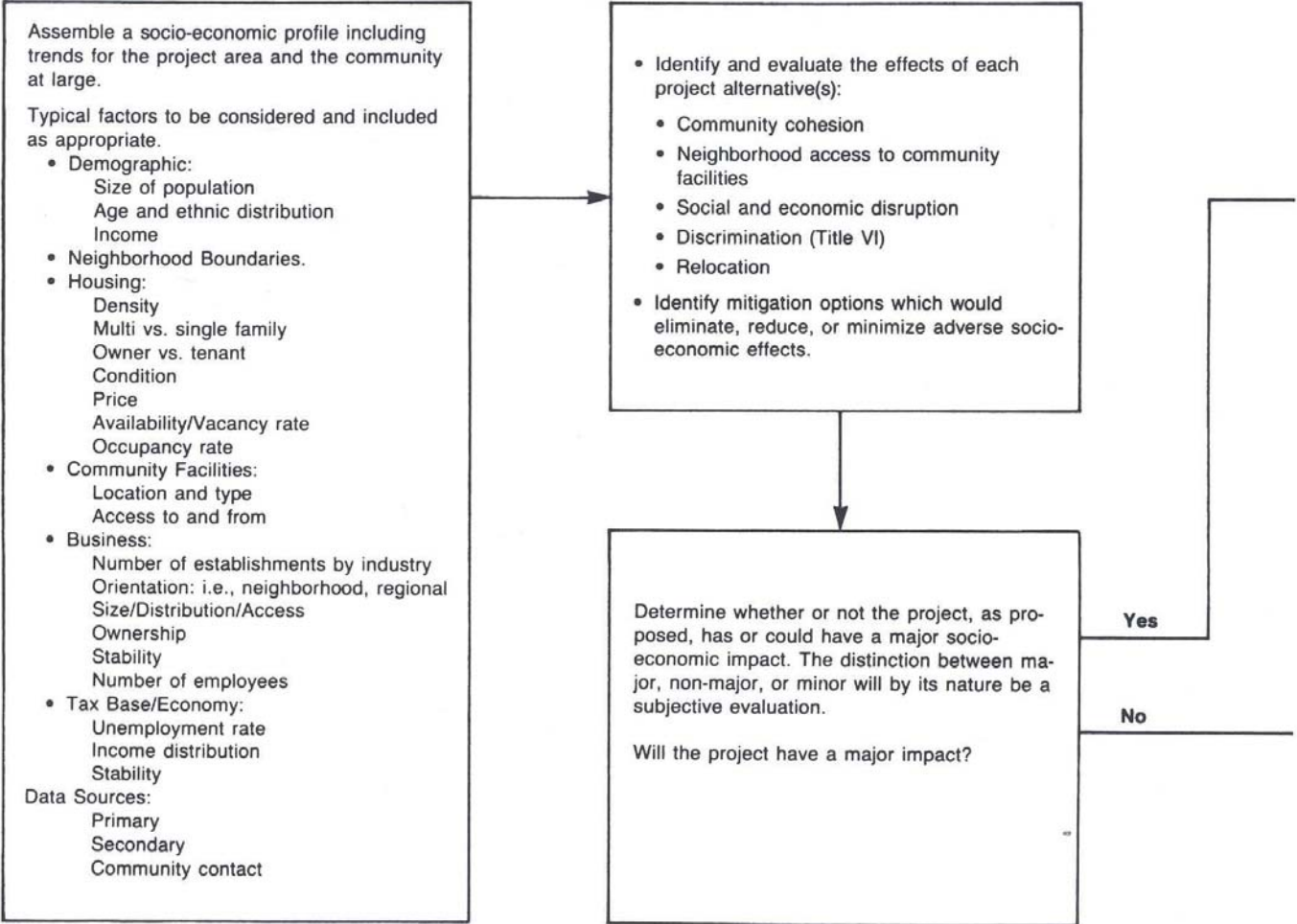


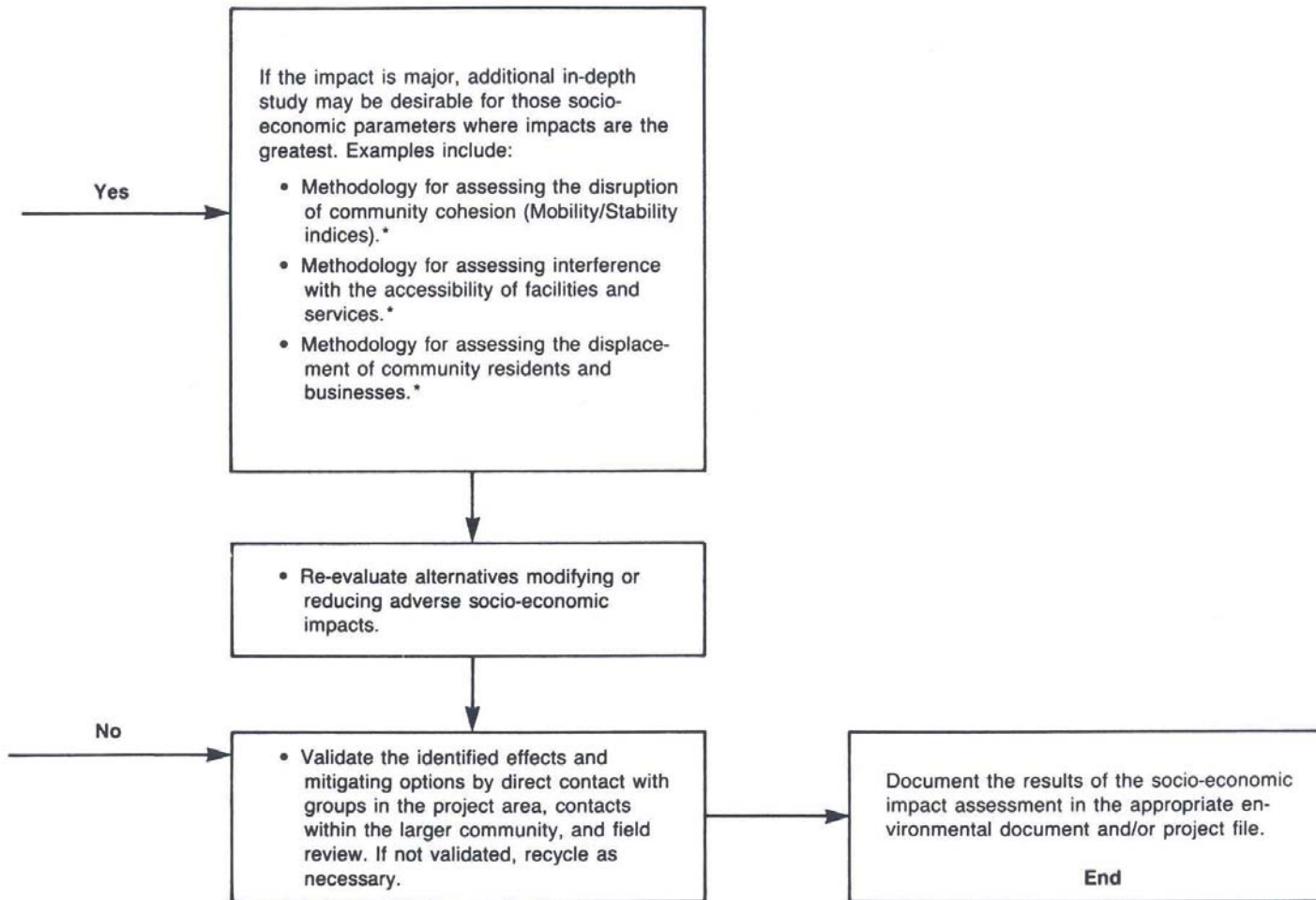




January, 1988

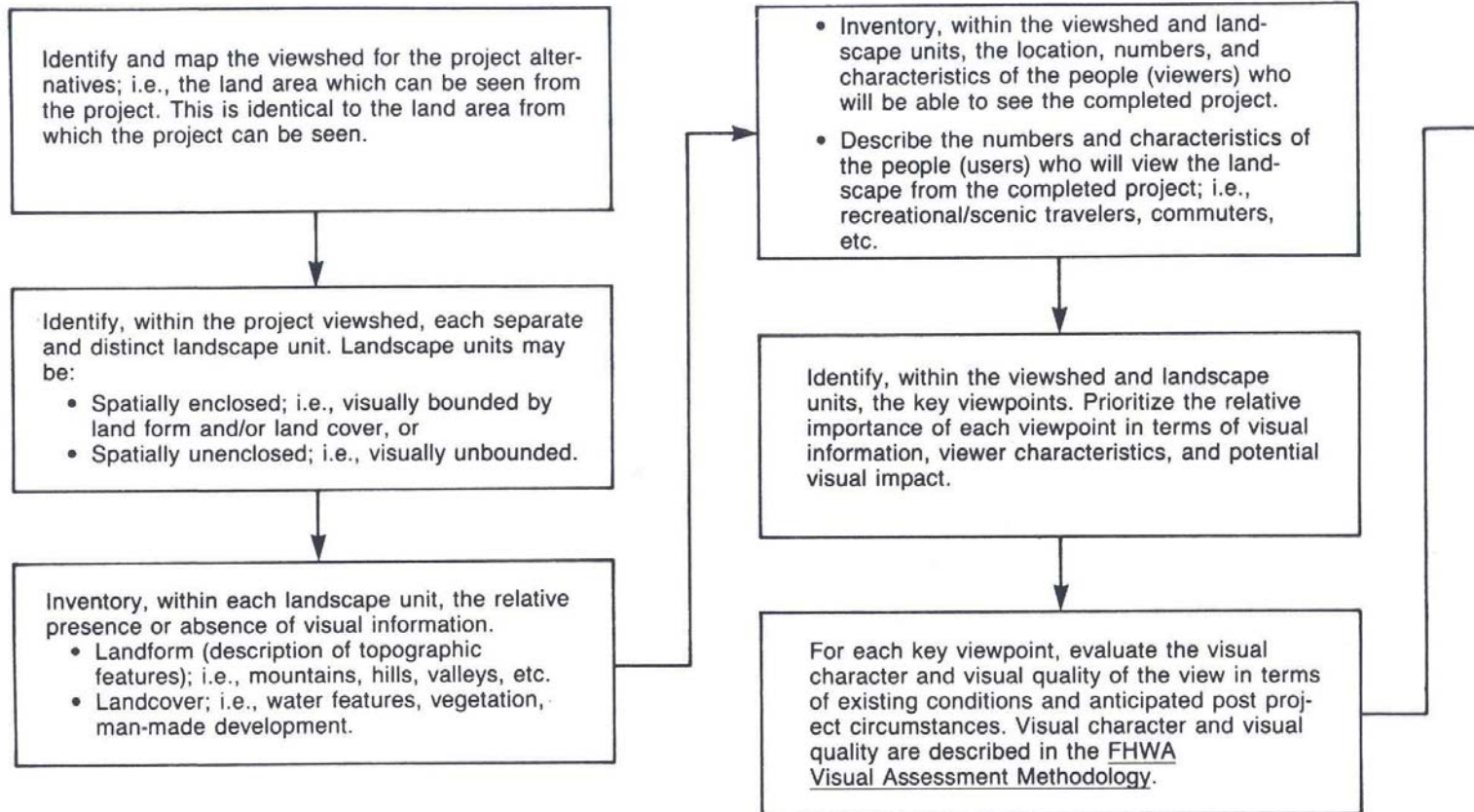
Socio-Economic Impact

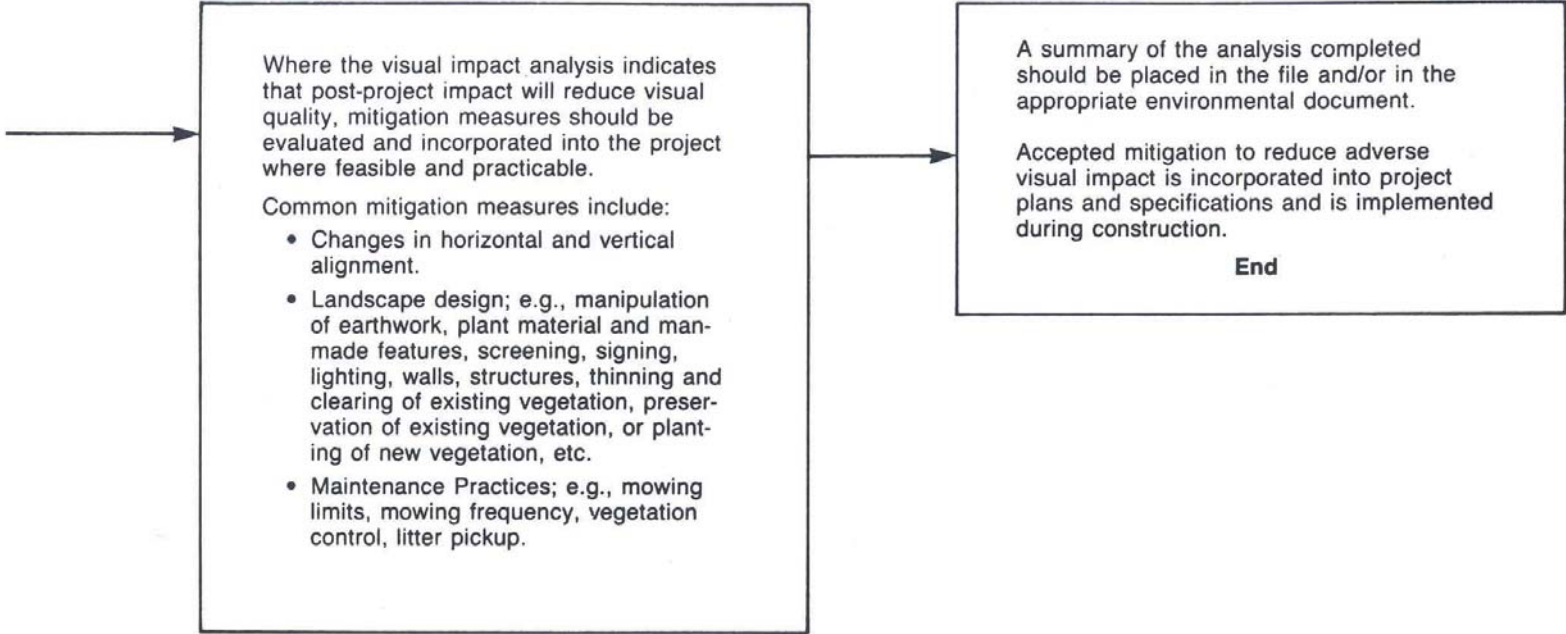




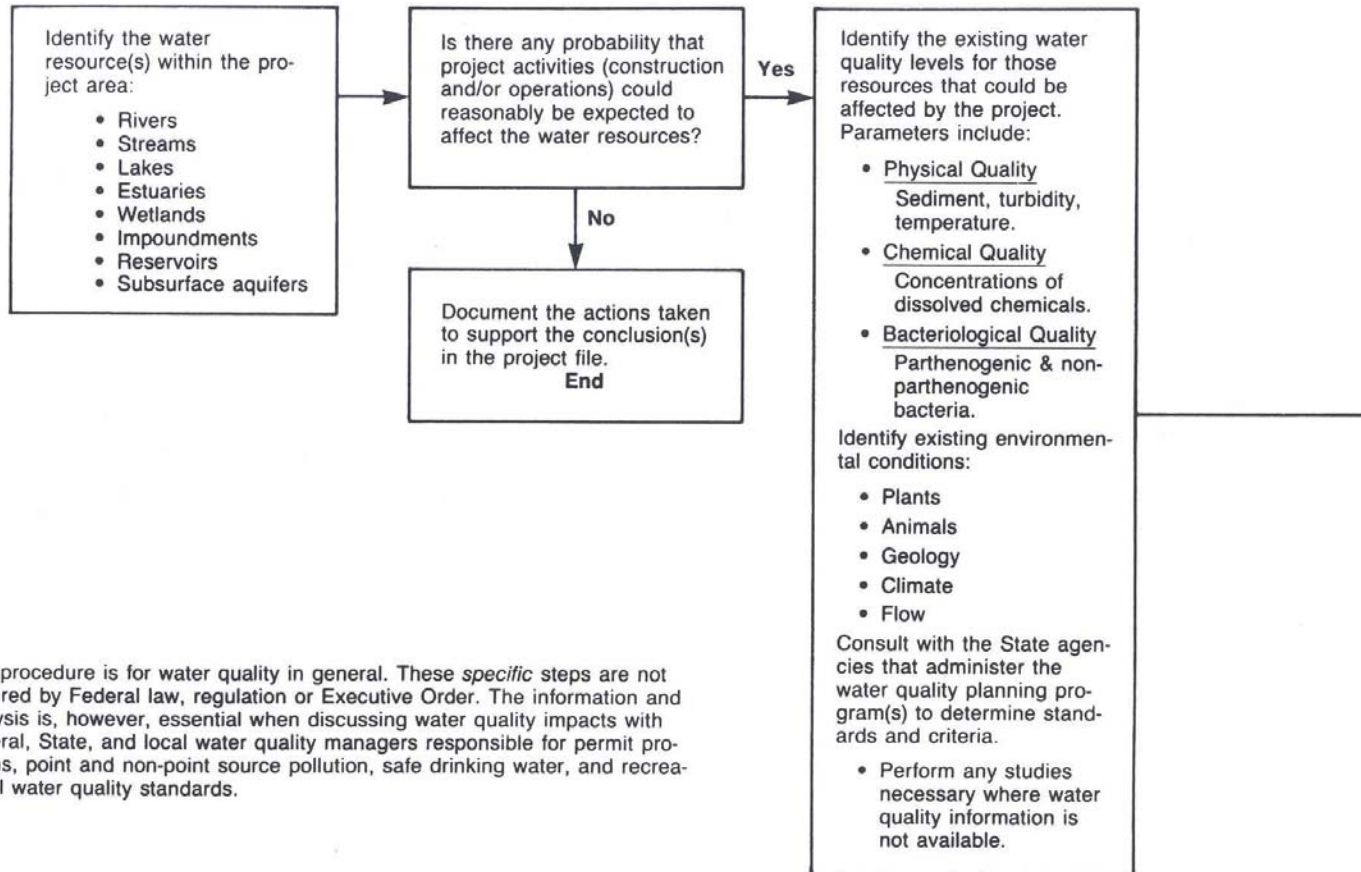
*See Chapter 5 in "Social Considerations in Highway Project Development."

Visual Impact

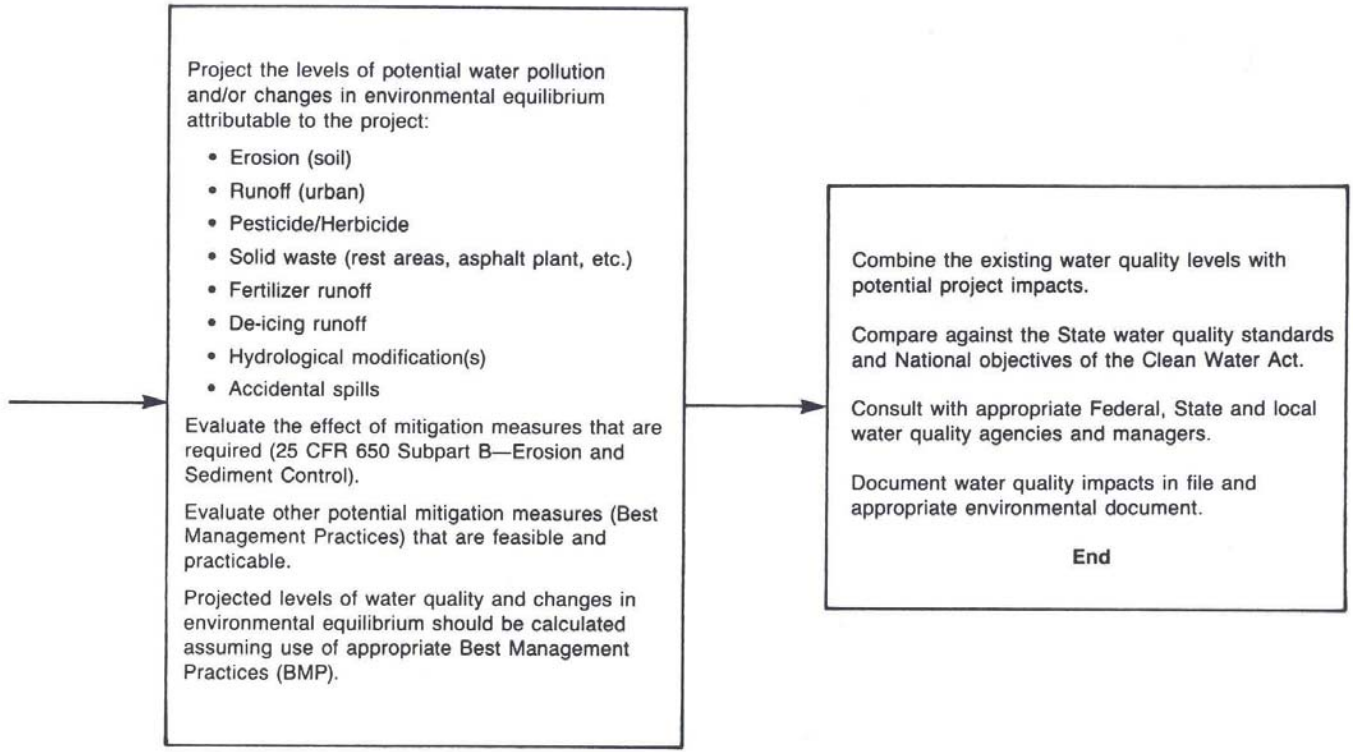




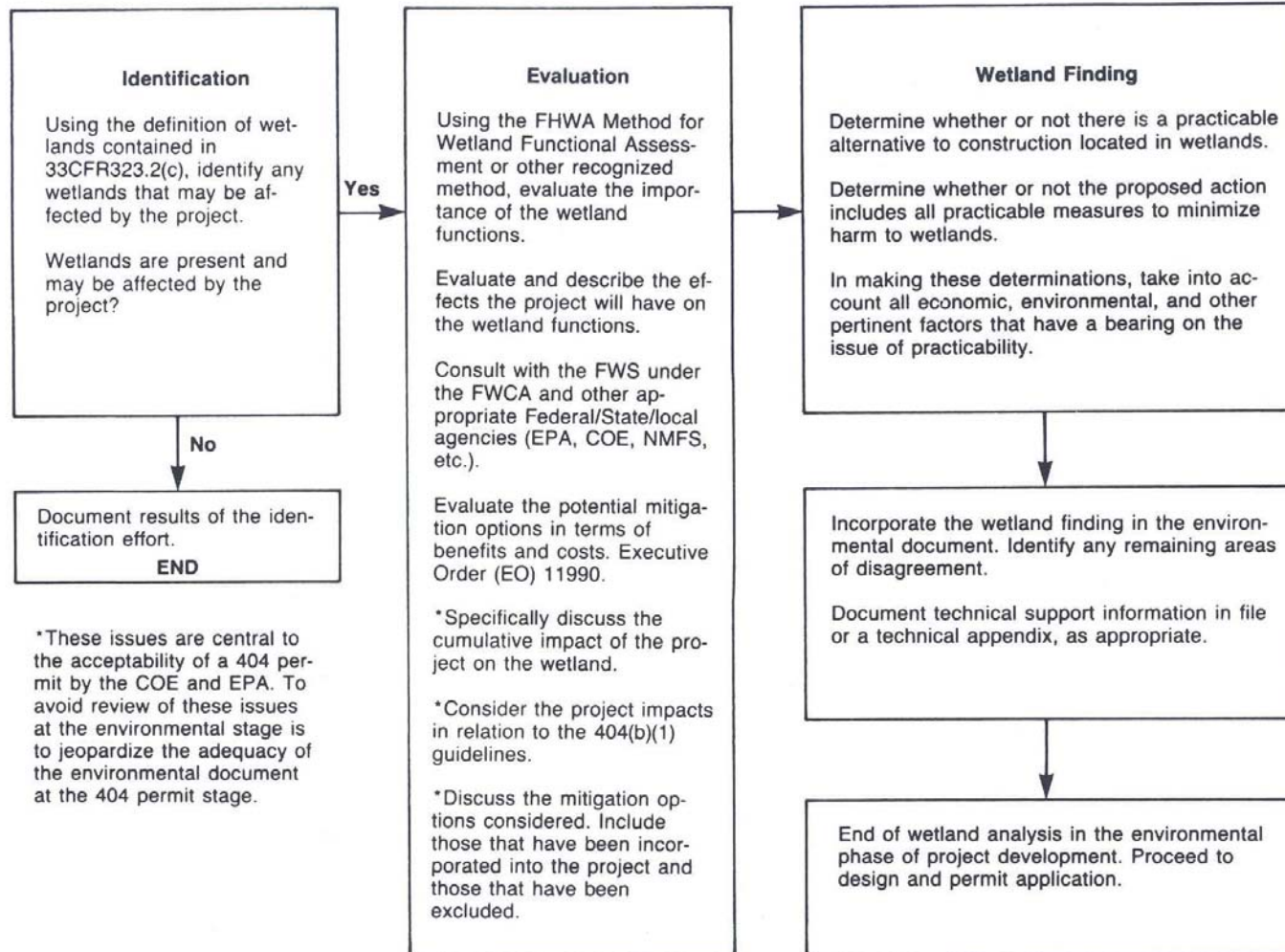
Water Quality*

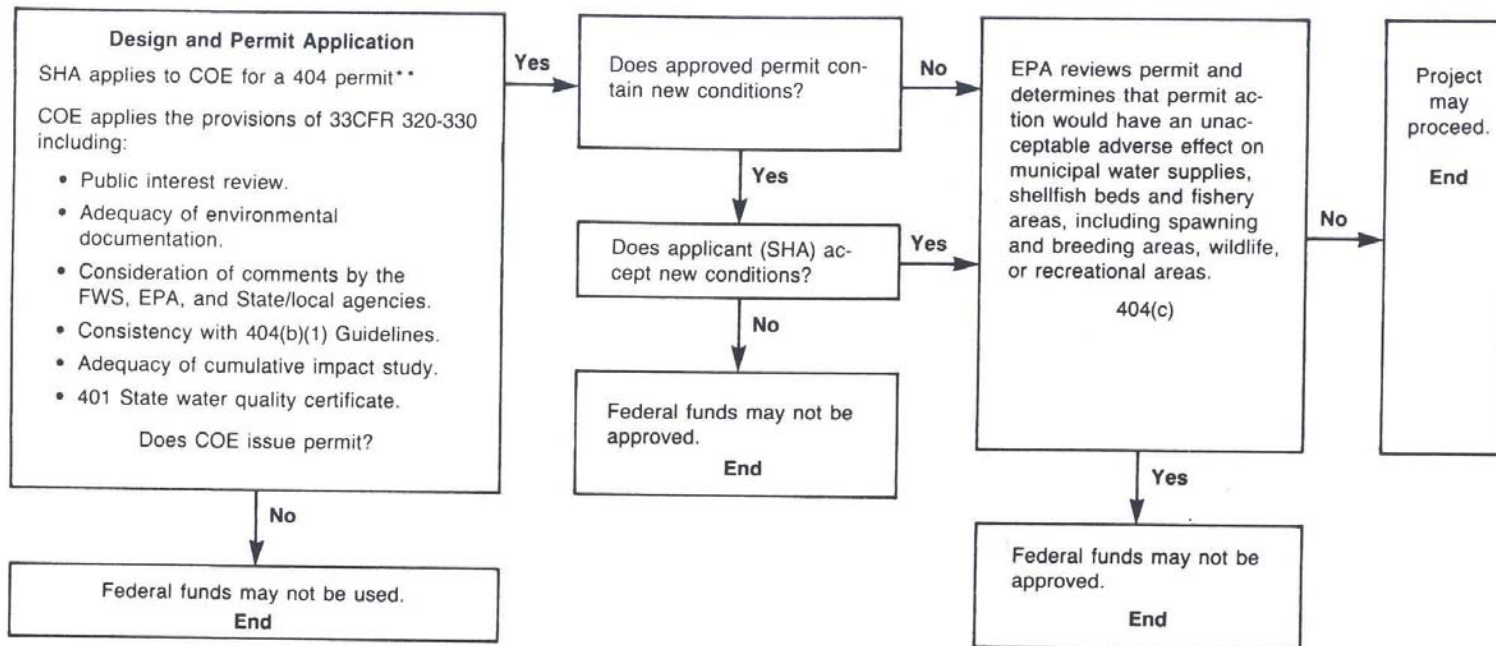


*This procedure is for water quality in general. These *specific* steps are not required by Federal law, regulation or Executive Order. The information and analysis is, however, essential when discussing water quality impacts with Federal, State, and local water quality managers responsible for permit programs, point and non-point source pollution, safe drinking water, and recreational water quality standards.



Wetlands





**When issues remain unresolved at the conclusion of the environmental phase of project development, they will probably be raised again when the permit is applied for.

Wild and Scenic Rivers

