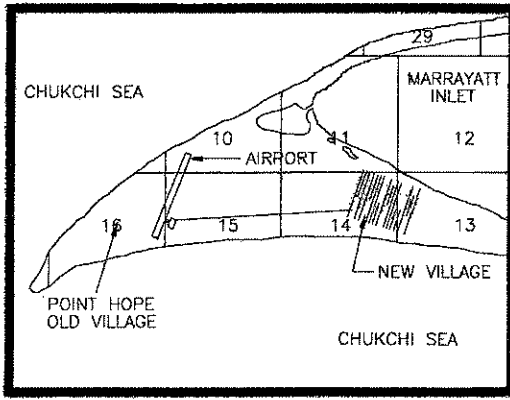


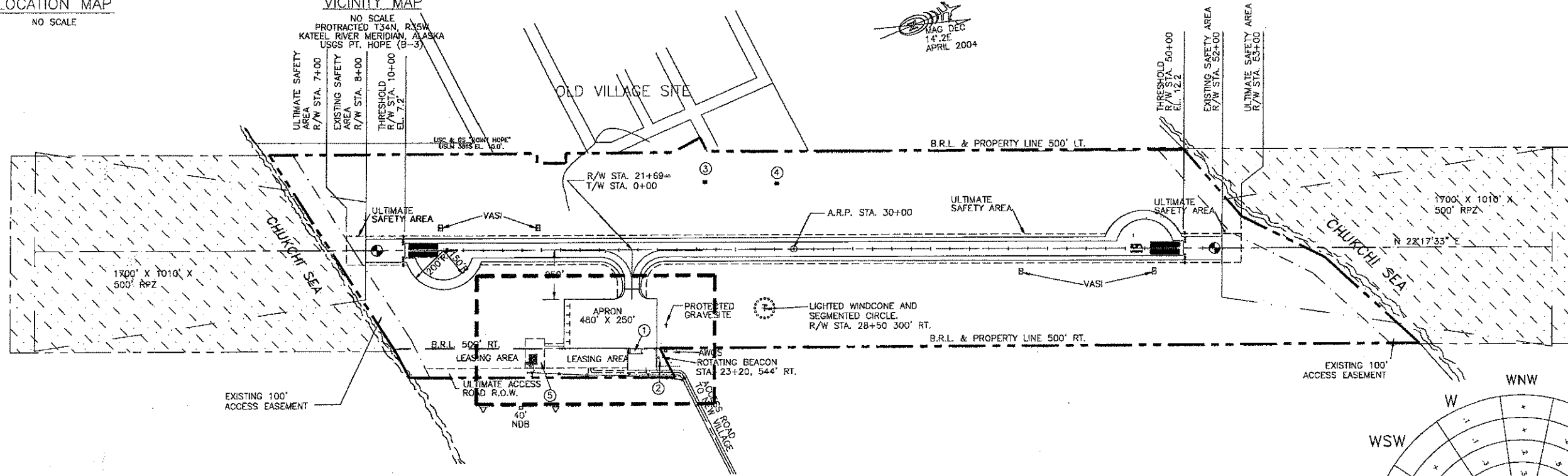
LOCATION MAP
NO SCALE



VICINITY MAP

NO SCALE
PROTRACTED T34N, R35W
KATEEL RIVER MERIDIAN, ALASKA
USGS PT. HOPE (8-3)

DATE
MAG DEC
14.2E
APRIL 2004



RUNWAY DATA		
	RUNWAY 1-19	
	EXISTING	ULTIMATE
% WIND COVERAGE	77.4%	SAME
RUNWAY SURFACE TYPE	3" ASPHALT	SAME
PAVEMENT STRENGTH	D-100	SAME
APPROACH VISIBILITY MINIMUMS	≥ 1 MILE	SAME
APPROACH SURFACES	34:1	SAME
RUNWAY LIGHTING	MRL	SAME
RUNWAY MARKING	VISUAL	SAME
VISUAL APPROACH AIDS	VASI	SAME
R/W DIMENSIONS	75' X 4000'	SAME
R/W SAFETY AREA	120' X 4400'	X 150'
R/W OBJECT FREE AREA (ROFA)	500' X 4800'	SAME
R/W OBSTACLE FREE ZONE (ROFZ)	400' X 4400'	SAME

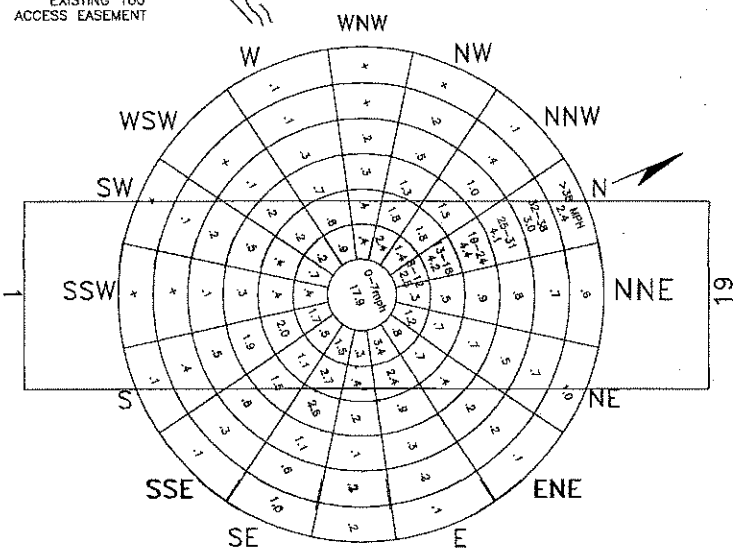
AIRPORT DATA			
	EXISTING	ULTIMATE	
AIRPORT ELEVATION (MSL)	12.2'	SAME	
AIRPORT REFERENCE CODE	BII	SAME	
MEAN DAILY MAX. TEMP. HOTTEST MONTH (JULY)	58°F	SAME	
TAXIWAY LIGHTING	MRL	SAME	
RAMP LIGHTING	FLOODLIGHTS	SAME	
NAVIGATION AIDS	BEACON/NDB	SAME	
COMMUNICATION AIDS	NONE	SAME	
AIRPORT REFERENCE POINT (ARP)	LAT. 68°20'55.81"N LONG. 168°47'57.66"W	SAME	
STA. 30+00, C/L	LAT. 68°20'57.60"W LONG. 168°48'17.86"W	SAME	
THRESHOLD R/W 1 STA. 10+00	LAT. 68°21'14.01"N LONG. 168°47'37.44"W	SAME	
THRESHOLD R/W 19 STA. 50+00	LAT. 68°21'14.01"N LONG. 168°47'37.44"W	SAME	
TAXIWAY DIMENSIONS	75' X 190'	120' X 190'	
TAXIWAY S.A. DIMENSIONS	95' X 190'	120' X 190'	
TAXIWAY GFA	162' X 190'	SAME	

LEGEND		
	EXISTING	ULTIMATE
PROPERTY LINE		SAME
BUILDING RESTRICTION LINE (B.R.L.)		SAME
DEVELOPMENT		SAME
WIND CONE & SEGMENTED CIRCLE		SAME
WIND CONE ONLY		SAME
BUILDINGS		SAME
ROADWAYS		SAME
DOLLARD FENCE		SAME
AIRPORT REFERENCE POINT		SHORELINE/WATERLINE
ROTATING BEACON		THRESHOLD
ANTENNAE/TOWERS		OVERHEAD POWER
VASI		LUMINAIRE

NONSTANDARD CONDITIONS			
ITEM	STANDARD	EXISTING	ULTIMATE
SAFETY AREA WIDTH	150'	120'	150'
SAFETY AREA L BEYOND R/W	300'	200'	300'

BUILDING TABLE			
NO.	DESCRIPTION	LOCATION	ELEV.
①	TERMINAL BLDG.	30' X 50'	STA. 21+80, 500' RT. 30.74
②	ELEC. EQUIP. STO BLDG.	8' X 10'	STA. 23+34, 513' RT. 19.94
③	ABANDONED HOUSE	13' X 14'	STA. 25+35, 350' LT. 20.00
④	ABANDONED HOUSE	11.7' X 8.3'	STA. 29+05, 340' LT. 20.00
⑤	SREB	40' X 50'	STA. 18+50, 550' RT. 32.00

- NOTES:
- NO OFZ OBJECT PENETRATIONS.
 - NO THRESHOLD SITING SURFACE OBJECT PENETRATIONS.
 - THE GEODETIC COORDINATES WERE CALCULATED FROM SURVEY CONTROL TIES TO TRI STATION "POINT HOPE."
 - DATA BASE CONTROL YEAR: NAD 83.



ESE WIND ROSE
13 KNOTS
77.4% WIND COVERAGE
PERIOD: OCT. 1943 - DEC 1945
SOURCE: U OF A AEICD

DESIGN LAH	
DRAWN CAT	
CHECKED POM	
BY	DATE
	4/1/04 AS-BUILT
	6/17/99 AS-BUILT & UPDATED
	REVISIONS

STATE OF ALASKA
DEPARTMENT OF TRANSPORTATION AND PUBLIC FACILITIES
NORTHERN REGION-DESIGN AND ENGINEERING SERVICES

APPROVED
s/ *Patricia D. Miller* DATE 8/16/04
PATRICIA D. MILLER, P.E. DESIGN GROUP CHIEF

AIRPORT LAYOUT PLAN APPROVED
BY LETTER DATED: 8/30/04

9/7/04

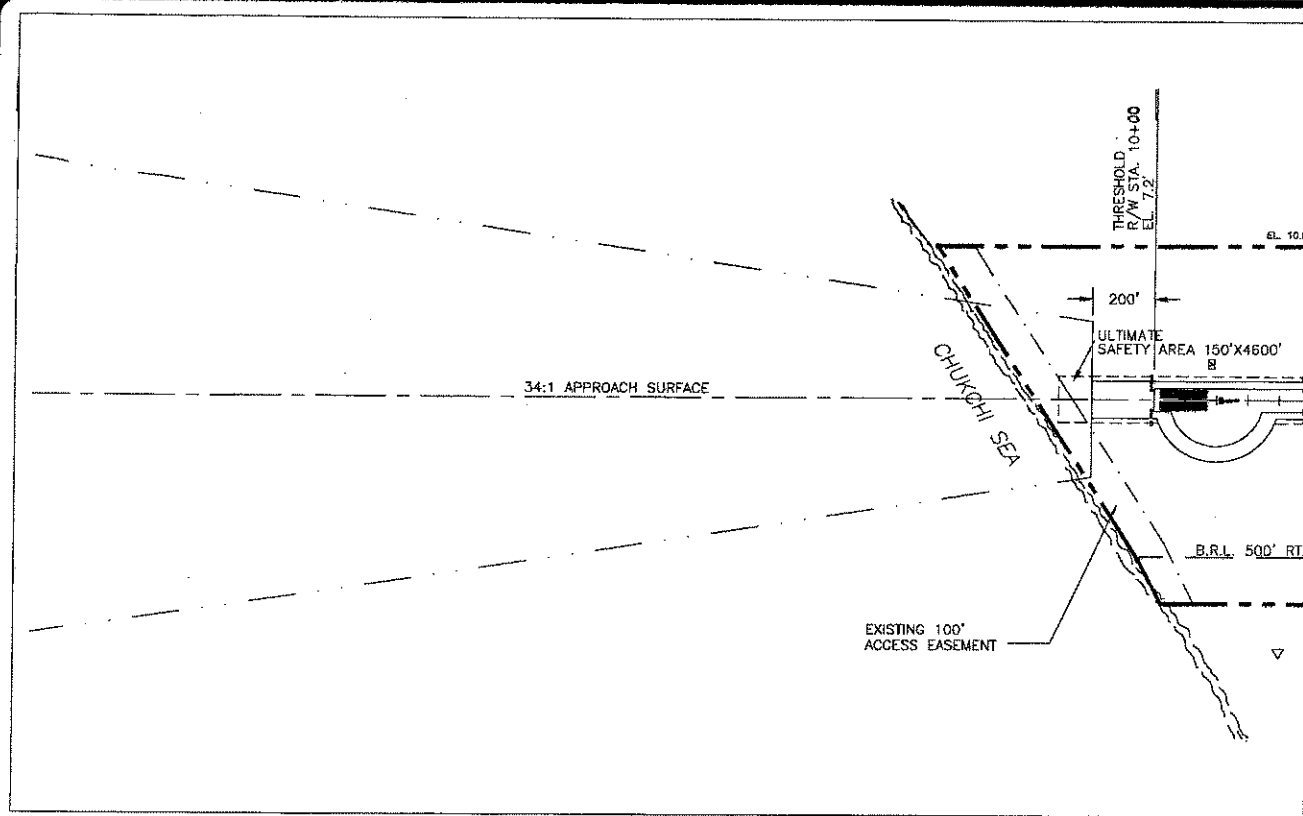
AIRPORTS DIVISION,
ALASKAN REGION, AAL-601
AIRSPACE REVIEW #99AAL-158NRA

THIS DRAWING REPLACES ALP DATED 11/23/99.

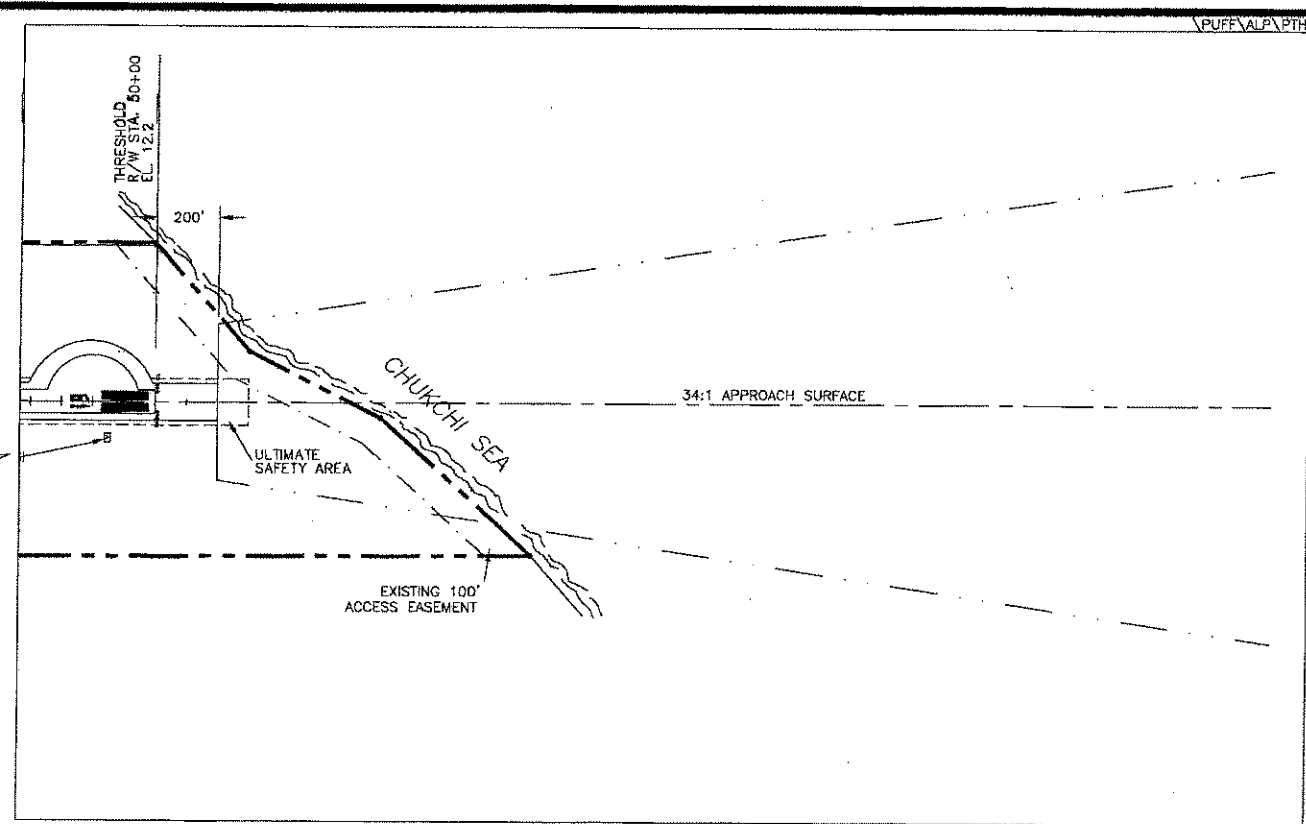
THIS ALP WAS PREPARED FROM AS-BUILT PLANS DATED 3/21/94, FROM THE ALP DATED 6/16/92 AND FAA APPROVED 9/1/92, AND SURVEY DATA. NEW SREB AS-BUILT DATED 4/1/04.

POINT HOPE AIRPORT
AIRPORT LAYOUT PLAN

SHEET
1 OF 3

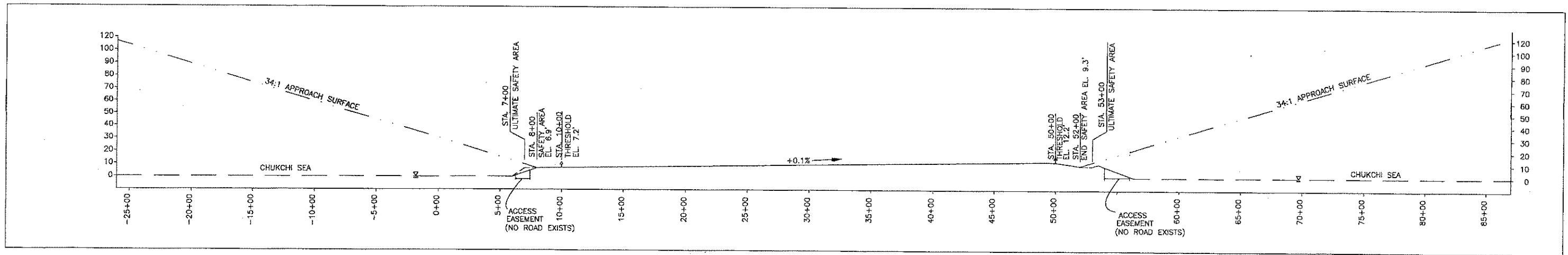


RUNWAY 1 INNER APPROACH PLAN



RUNWAY 19 INNER APPROACH PLAN

NOTE: 100' WIDE ACCESS EASEMENTS EXIST AT THE NORTH AND SOUTH ENDS OF THE AIRPORT PROPERTY. NO ROAD EXISTS



DESIGN LAH
DRAWN CAT
CHECKED PDM

BY	DATE	REVISIONS
	4/1/04	AS-BUILT
	6/17/99	AS-BUILT & UPDATED

STATE OF ALASKA
 DEPARTMENT OF TRANSPORTATION AND PUBLIC FACILITIES
 NORTHERN REGION-DESIGN AND ENGINEERING SERVICES

APPROVED *Patricia D. Miller* DATE *8/16/04*
 PATRICIA D. MILLER, P.E. DESIGN GROUP CHIEF

AIRPORT LAYOUT PLAN APPROVED
 BY LETTER DATED: *8/16/04*

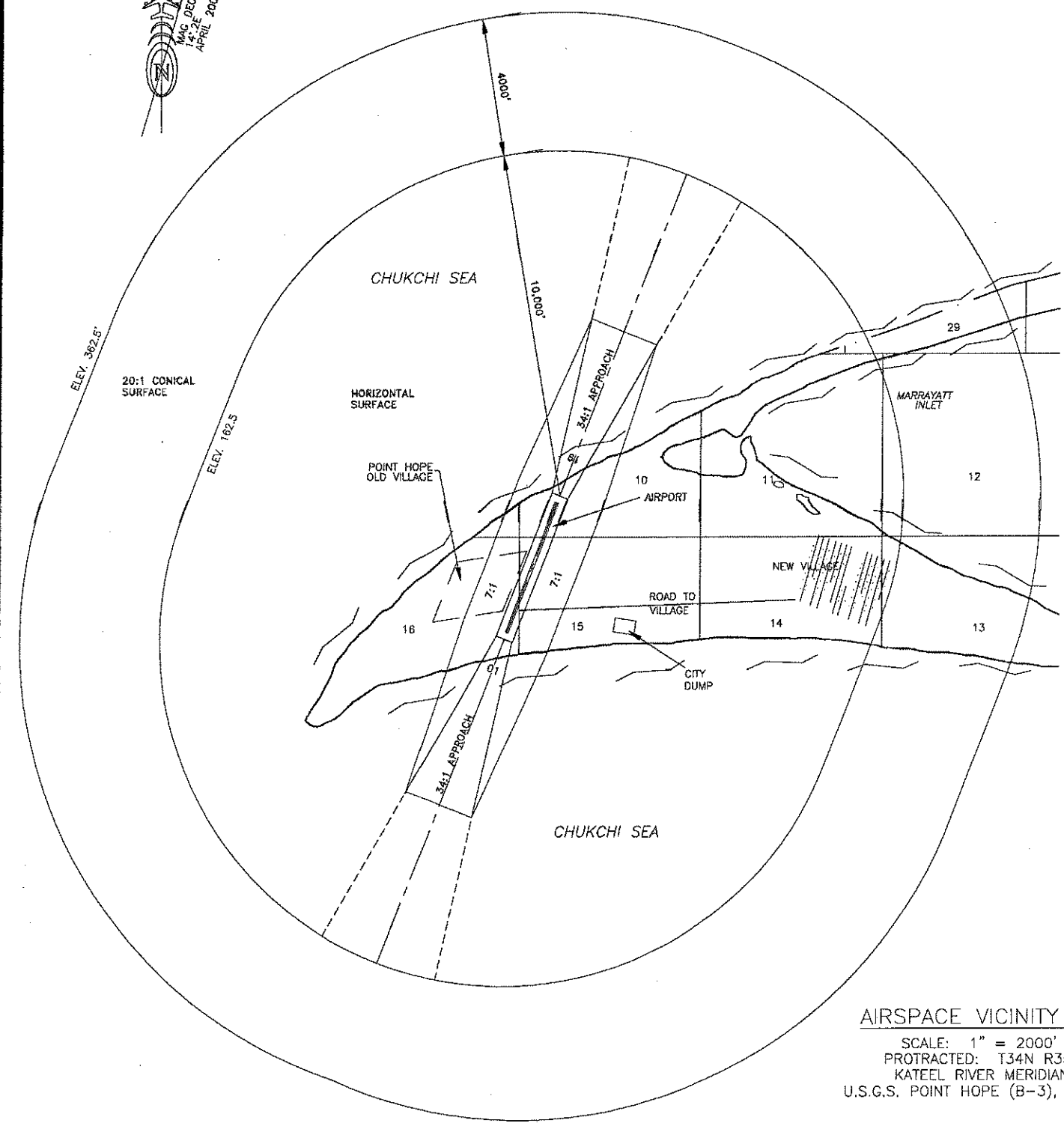
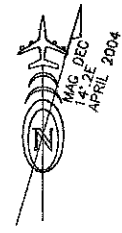
J.P. [Signature]

AIRPORTS DIVISION,
 ALASKAN REGION, AAL-601
 AIRSPACE REVIEW #99AAL-158NRA

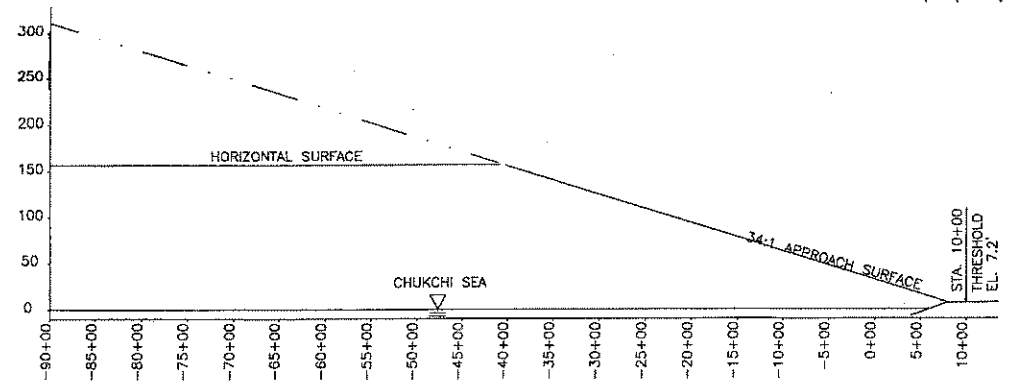
THIS DRAWING REPLACES ALP DATED 11/23/99.

THIS ALP WAS PREPARED FROM AS-BUILT PLANS DATED 3/21/94, FROM THE ALP DATED 6/16/92 AND FAA APPROVED 9/1/92, AND SURVEY DATA. NEW SREB AS-BUILT DATED 4/1/04.

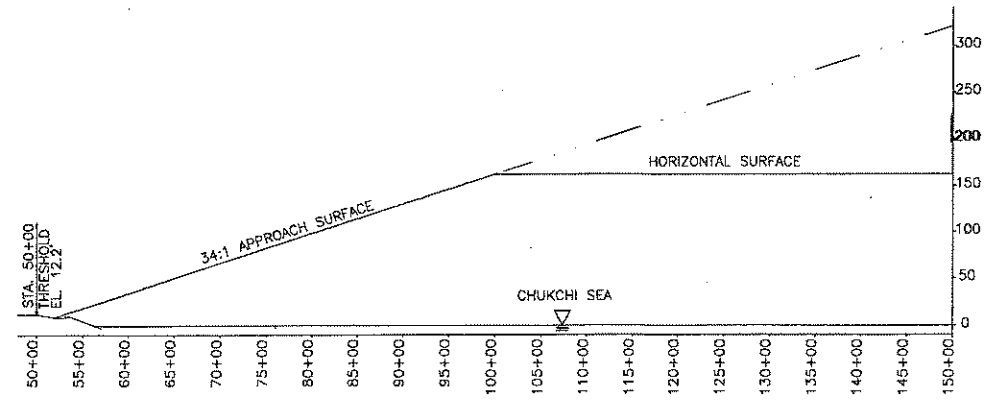
POINT HOPE AIRPORT
 INNER PORTION OF APPROACH SURFACE PLAN & PROFILE



AIRSPACE VICINITY MAP
 SCALE: 1" = 2000'
 PROTRACTED: T34N R35W
 KATEEL RIVER MERIDIAN
 U.S.G.S. POINT HOPE (B-3), ALASKA



COMPOSITE PROFILE APPROACH 1



COMPOSITE PROFILE APPROACH 19

NOTE:
 REFER TO THE INNER PORTION OF THE
 APPROACH SURFACE PLAN VIEW DETAILS
 FOR CLOSE-IN OBSTRUCTIONS.

DESIGN	LAH
DRAWN	CAT
CHECKED	PDM
BY	DATE
4/1/04	AS-BUILT
6/17/99	AS-BUILT & UPDATED
REVISIONS	

STATE OF ALASKA
 DEPARTMENT OF TRANSPORTATION AND PUBLIC FACILITIES
 NORTHERN REGION-DESIGN AND ENGINEERING SERVICES

APPROVED: *Patricia D. Miller* DATE: 8/18/04
 PATRICIA D. MILLER, P.E. DESIGN GROUP CHIEF

AIRPORT LAYOUT PLAN APPROVED
 BY LETTER DATED: 8/20/04

J. L. Smith
 AIRPORTS DIVISION,
 ALASKAN REGION, AAL-601
 AIRSPACE REVIEW #99AAL-158NRA

THIS DRAWING REPLACES ALP DATED 11/23/99.

THIS ALP WAS PREPARED FROM AS-BUILT PLANS
 DATED 3/21/94, FROM THE ALP DATED 6/16/92 AND
 FAA APPROVED 9/1/92, AND SURVEY DATA.
 NEW SREB AS-BUILT DATED 4/1/04.

POINT HOPE AIRPORT
 AIRSPACE
 COMPOSITE APPROACH PROFILES