

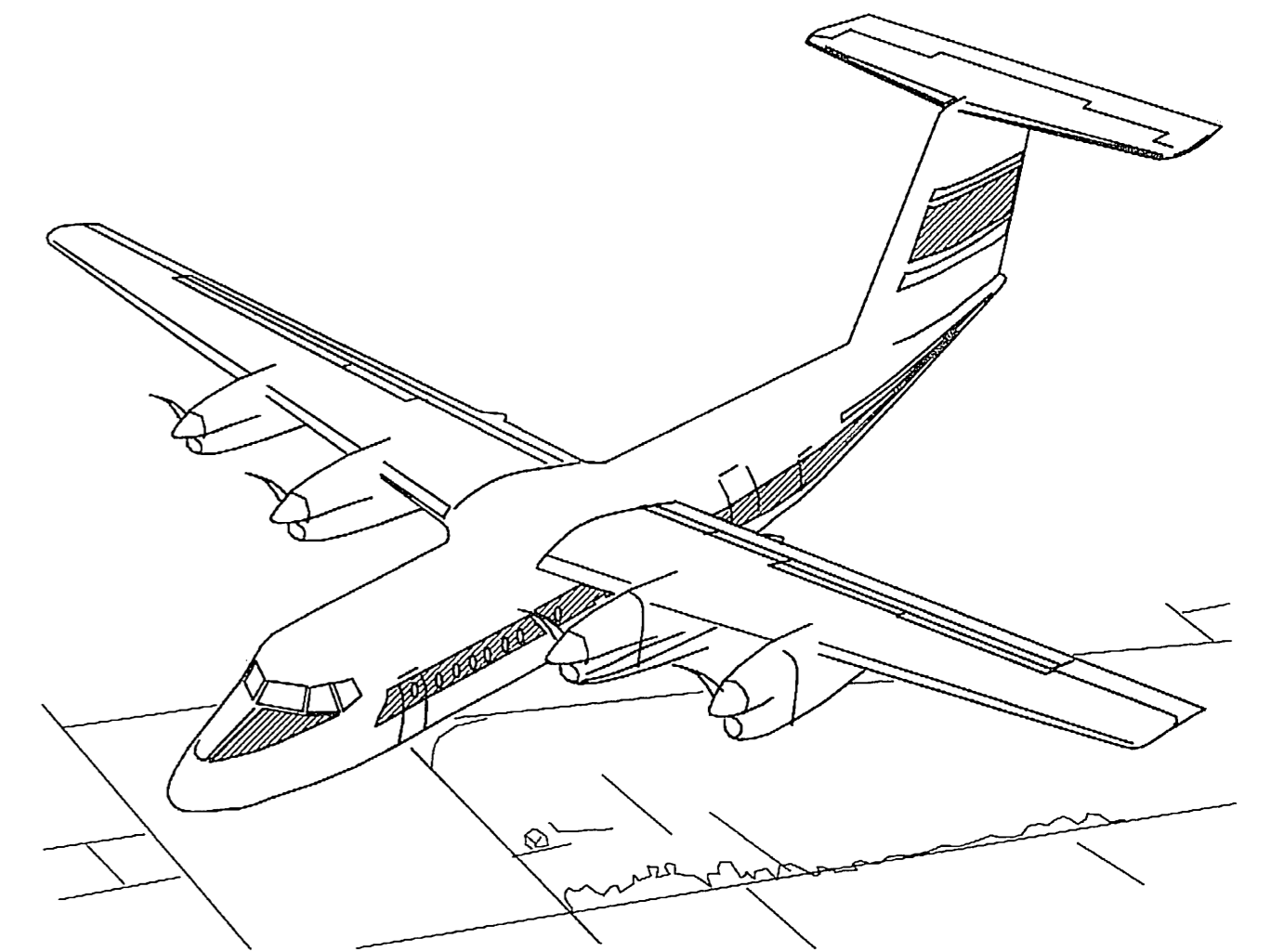
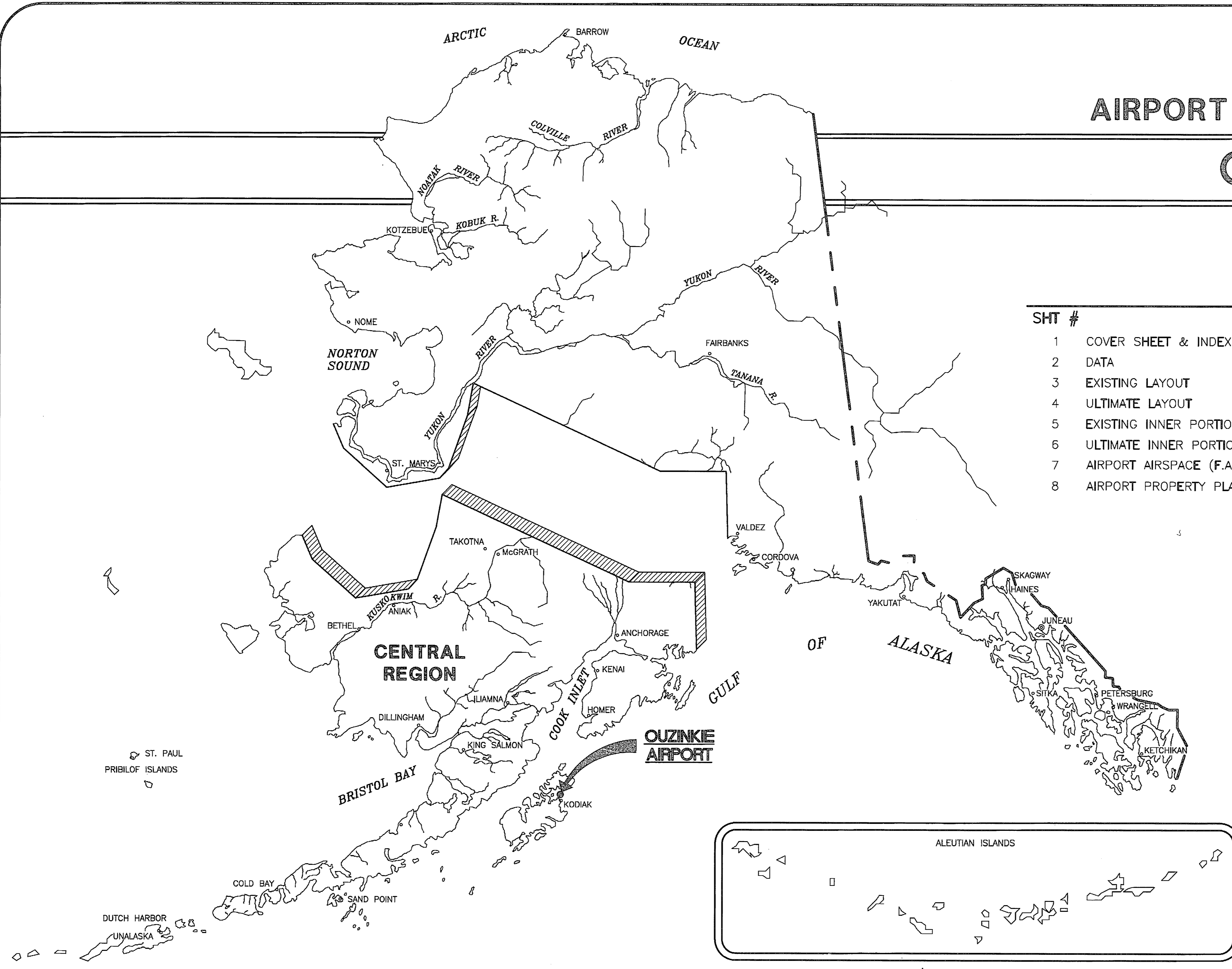
AIRPORT LAYOUT PLAN FOR OUZINKIE JULY, 2006

DRAWING INDEX

SHT #	TITLE
1	COVER SHEET & INDEX
2	DATA
3	EXISTING LAYOUT
4	ULTIMATE LAYOUT
5	EXISTING INNER PORTION OF THE APPROACH SURFACE - RUNWAY 8-26
6	ULTIMATE INNER PORTION OF THE APPROACH SURFACE - RUNWAY 8-26
7	AIRPORT AIRSPACE (F.A.R. PART 77)
8	AIRPORT PROPERTY PLAN

E81 FILE CORP. IRVINE CA

User: L:\WILHELM Aug 02 2006 - 10:35am
Drawing: Z:\0702 DOT&P\FY136 OUZINKIE\CAD\ACAD2000\ALP_LISFT\OUZ_LISFT_ALP1.DWG - Layout: LAYOUT1
Xref: - Images:



BY	DATE	REVISION
	04/17/17	ALP UPDATE
	03/15/10	ALP UPDATE SHEETS 2-6

**SPONSORED BY
STATE OF ALASKA
DEPARTMENT OF TRANSPORTATION
AND PUBLIC FACILITIES
CENTRAL REGION**

CONCUR: *[Signature]* **DATE 8/21/06**
ROBERT A. CAMPBELL, P.E. **REGIONAL PRECONSTRUCTION ENGINEER**

APPROVED: *[Signature]* **DATE 8/21/2006**
HARVEY M. DOUTHIT, P.E. **DESIGN SECTION CHIEF**

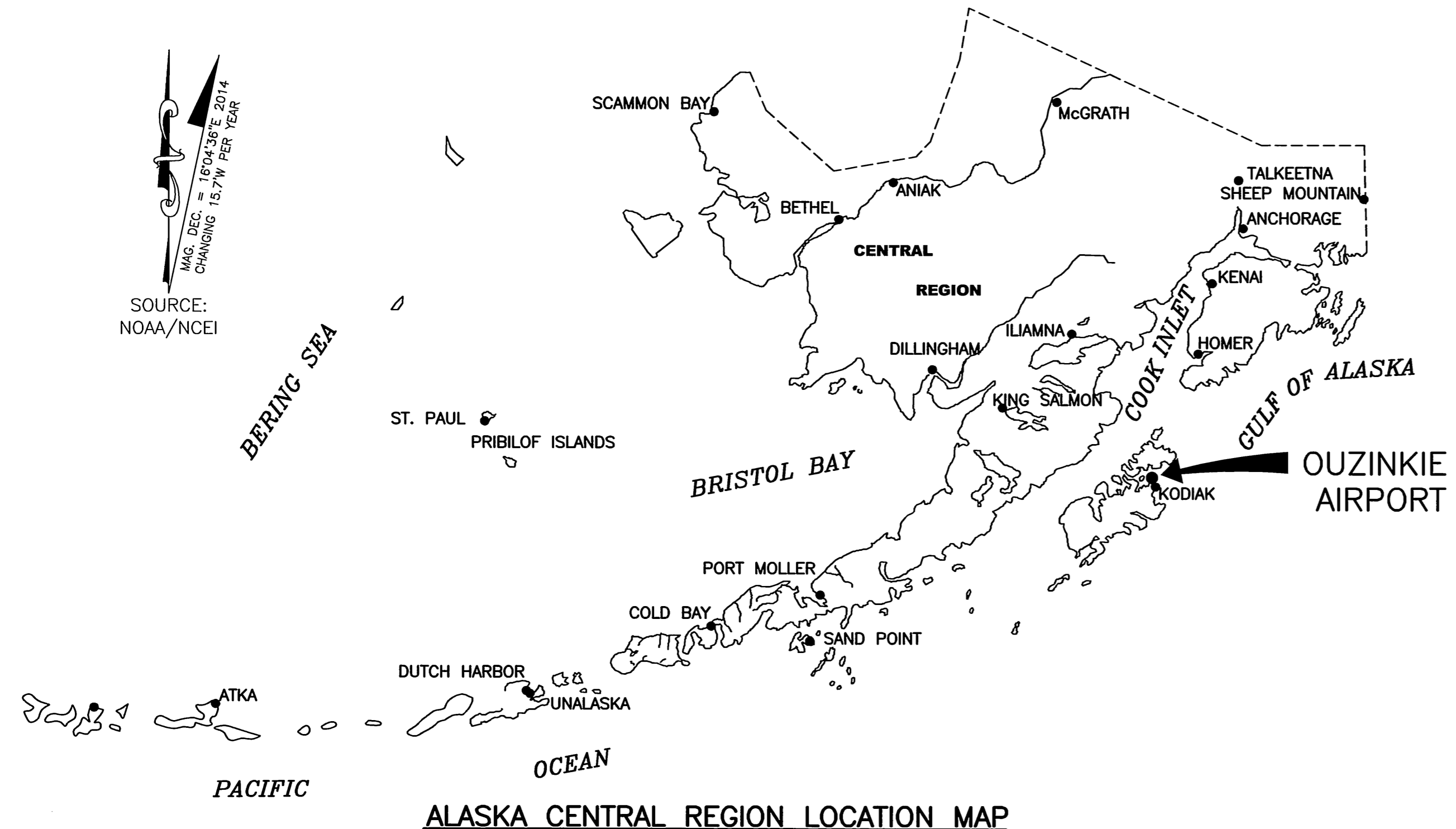
AIRPORT LAYOUT PLAN CONDITIONAL APPROVAL
 SUBJECT TO ALP APPROVAL LETTER DATED *10/4/06*
 By: *[Signature]* DATE: *10/4/06* FAA AIRSPACE REVIEW NUMBER
 2006-AAL-172-NRA

AS-BUILT Pzyter 5-21-17

**OUZINKIE
AIRPORT LAYOUT PLAN**

SHEET 1 OF 8

Date Plotted: 4/17/2017, 2:55 PM
 Layout Name: 2 DATA
 File Name: I:\04702828\Ouzinkie\Drawings\4K5-9-2-COVER-DATA.dwg
 Designed By: MMW
 Drawn By: RWW
 Checked By: JGL

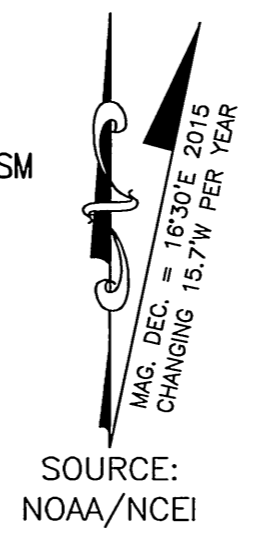


ALASKA CENTRAL REGION LOCATION MAP



VICINITY MAP

1 SM .5 SM 0 1 SM 2 SM
 T 27 S, R 20 W, SEC. 11, 12
 SEWARD MERIDIAN
 U.S.G.S. KODIAK (D-2), ALASKA

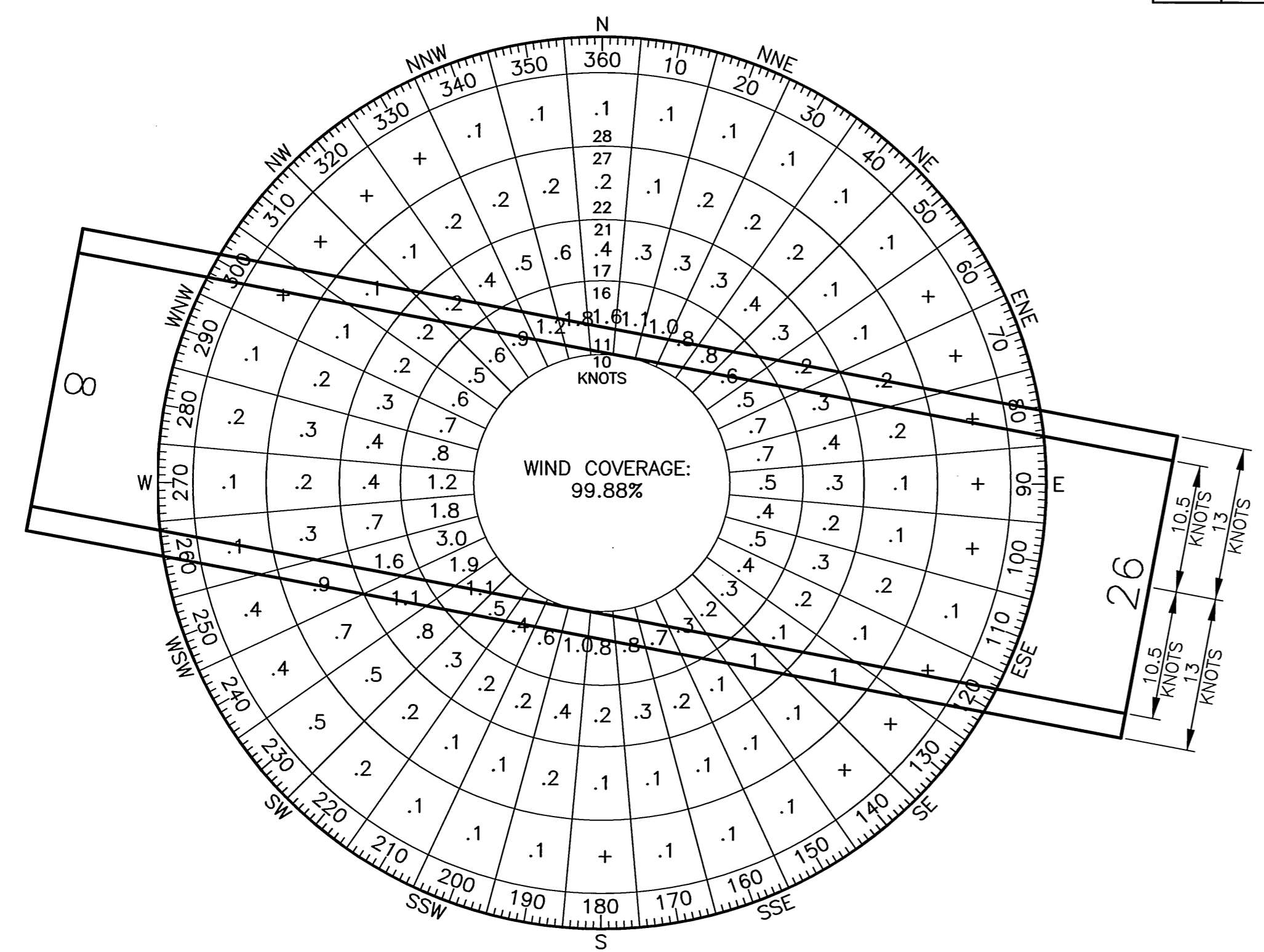


ALL WEATHER WIND DATA TABLE

RUNWAY	10.5 kt	13 kt	16 kt	20 kt
8/26	99.71%	99.88%	N/A	N/A

SOURCE: HDR ALASKA, INC. ANCHORAGE ALASKA
 DATA IS FOR OUZINKIE ALASKA

PERIOD: AUGUST, 2000 THRU AUGUST, 2002



GEOGRAPHIC COORDINATES

ITEM	EXISTING LATITUDE	EXISTING LONGITUDE	EXISTING ELEVATION	ULTIMATE LATITUDE	ULTIMATE LONGITUDE	ULTIMATE ELEVATION
ARP	57°56'31.76" N	152°27'53.98" W	99.84'	SAME	SAME	SAME
THRESHOLD RW 8	57°56'34.76" N	152°28'24.02" W	95.69'	SAME	SAME	SAME
THRESHOLD RW 26	57°56'28.76" N	152°27'23.93" W	95.68'	SAME	SAME	SAME

PACS & SACS

PID	DESIGNATION	LATITUDE	LONGITUDE	ELLIPSOID HEIGHT	NORTHING	EASTING	ELEVATION	DESCRIPTION
TDB	4K5 A	57°56'28.80" N	152°28'10.75" W	138.04	1442958.19	1937751.85	103.66'	PACS
TDB	4K5 B	57°56'32.93" N	152°28'35.61" W	107.53	1443346.50	1936401.10	73.17'	SACS
TDB	4K5 C	57°56'27.45" N	152°27'39.71" W	132.34	1442858.61	1939430.35	97.96'	SACS

MODIFICATION TO STANDARD/NON-STANDARD CONDITIONS

ITEM	STANDARD	EXISTING	NEAR TERM	ULTIMATE
NONE				

NOTES

- THIS DRAWING IS A COMPILATION OF GROUND SURVEY AND AERIAL MAPPING DATA COLLECTED DURING THE 2014 SEASON IN SUPPORT OF FAA AERONAUTICAL SURVEY #156823.
- THE HORIZONTAL COORDINATE SYSTEM FOR THIS PROJECT IS NAD 83 (2011) (EPOCH 2010) ALASKA STATE PLANE ZONE 5, U.S. FEET. THE VERTICAL DATUM FOR THIS PROJECT IS NAVD 88 (GEOID 12A).
- GROUND SURVEY WAS PERFORMED BY STANTEC JULY 16, 2014, THROUGH SEPTEMBER 19, 2014. AERIAL MAPPING WAS PERFORMED BY KODIAK MAPPING USING IMAGERY COLLECTED JUNE 24, 2014, AND JULY 2, 2014.
- PACS AND SACS POSITIONS SHOWN HEREIN ARE BASED ON STANTEC SURVEY RESULTS USING OPUS (TEMPORARY CONTROL). NATIONAL GEODETIC SURVEY (NGS) PUBLISHED POSITIONS ARE NOT AVAILABLE AT THIS TIME.

AIRPORT DATA TABLE

ITEM	EXISTING	ULTIMATE
ICAO IDENTIFIER	N/A	N/A
NATIONAL AIRPORT IDENTIFIER	4K5	4K5
FAA SITE NUMBER	50580.1*A	50580.1*A
AIRPORT ELEVATION NAVD88 (M.S.L.)	99.84'	99.84'
AIRPORT REFERENCE CODE	B-I	B-II SMALL
MEAN MAX. TEMPERATURE, HOTTEST MONTH (JULY)	17°C (62°F)	17°C (62°F)
MAGNETIC DECLINATION, YEAR, RATE OF CHANGE	16°30'E, 2015, 15.7'W PER YEAR	
AIRPORT AND TERMINAL NAVIGATION AIDS	BEACON, WINDCONE, SEG. CIRCLE	BEACON, WINDCONE, SEG. CIRCLE
NPIAS SERVICE LEVEL	GENERAL AVIATION	GENERAL AVIATION
STATE EQUIVALENT SERVICE ROLE	COMMUNITY OFF-ROAD	COMMUNITY OFF-ROAD

RUNWAY DATA TABLE

ITEM	RUNWAY 8/26	
	EXISTING	ULTIMATE
RUNWAY TYPE (UTILITY OR OTHER THAN UTILITY)	UTILITY	UTILITY
FAR PART 77 APPROACH CATEGORY (V, NPI, P)	V	NPI
FAR PART 77 APPROACH SURFACES SLOPE	20:1	20:1
VISIBILITY MINIMUM	VISUAL	1 SM
RUNWAY SURFACE	GRAVEL	GRAVEL
AIRPLANE GEAR CONFIG/PAVE STRENGTH x1000lbs	N/A	N/A
AIRCRAFT APPROACH CATEGORY	B	B
AIRCRAFT DESIGN GROUP	I	II
MEAN GEODETIC BEARING	S 79°22'25.22" E	S 79°22'25.22" E
MAXIMUM ELEVATION NAVD88	99.84'	99.84'
EFFECTIVE GRADE	0.00%	0.00%
TOUCHDOWN ZONE ELEVATION NAVD88	99.84' / 99.84'	99.84' / 99.84'
RUNWAY DIMENSIONS	60'x3300'	75'x3300'
RUNWAY SAFETY AREA (RSA)	120'x3780'	150'x3900'
RSA LENGTH BEYOND RW END	240'	300'
RUNWAY PROTECTION ZONE (RPZ)	500'x700'x1000'	250'x450'x1000'
RUNWAY OBJECT FREE AREA (OFA)	400'x3780'	500x3900
OFA LENGTH BEYOND RW END	240'	300'
RUNWAY OBSTACLE FREE ZONE (OFZ)	250'x3700'	250'x3700'
RUNWAY LIGHTING	MIRL	MIRL
RUNWAY MARKING TYPE	NONE	NONE
RUNWAY NAVIGATIONAL AIDS	NONE	PAPI, REIL
AERONAUTICAL SURVEY TYPE REQUIRED	VERTICALLY GUIDED	VERTICALLY GUIDED

LEGEND

ITEM	EXISTING	ULTIMATE
AIRPORT REFERENCE POINT (A.R.P.)		
ANTENNA		
BLUFF		
BUILDINGS		
BUILDING RESTRICTION LINE		
FENCE		
LIGHT POLE		
NON-DIRECTIONAL BEACON		
PAPI		
PART 77 APPROACH SURFACE		
PROPERTY LINE		
REIL		
ROADWAYS		
ROTATING BEACON		
RUNWAY OBSTACLE FREE AREA		
RUNWAY OBSTACLE FREE ZONE		
RUNWAY PROTECTION ZONE		
RUNWAY SAFETY AREA		
SEGMENTED CIRCLE		
SIGN		
SURVEY MONUMENT		
THRESHOLD MARKERS/LIGHTS		
TOPOGRAPHIC CONTOURS		
TREE (LARGE SINGLE)		
TREELINE		
UTILITY POLE		
WATER BODY		
WEATHER STATION		
WIND CONE		

BY	DATE	REVISION
	11/3/15	AS-BUILT PER AKSAS 52637
	4/15/10	MODIFY AIRPORT ELEVATION
	3/15/10	UPDATE BASIC DATA TABLE WIND ROSE

**STATE OF ALASKA
DEPARTMENT OF TRANSPORTATION
AND PUBLIC FACILITIES
CENTRAL REGION**

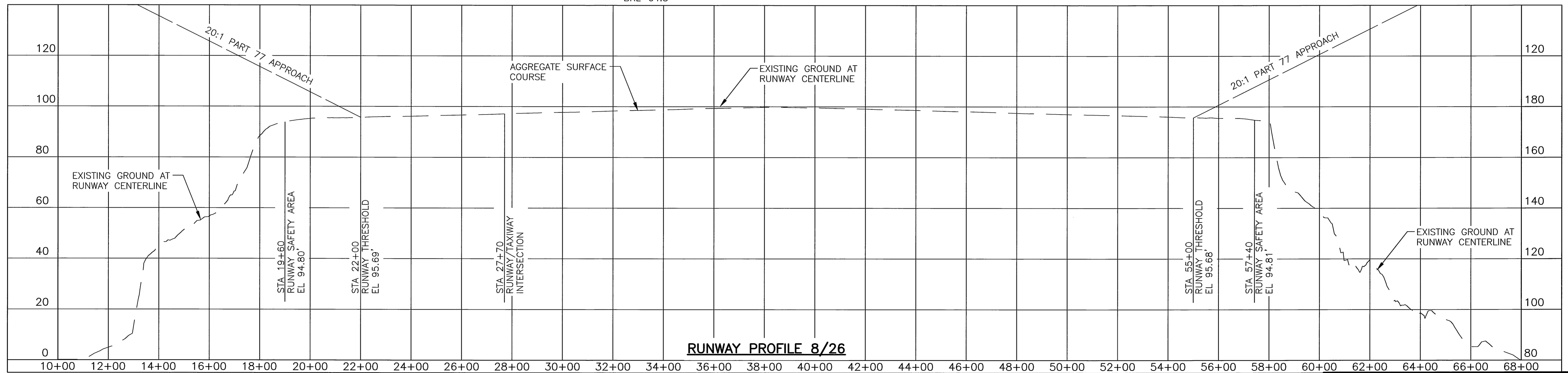
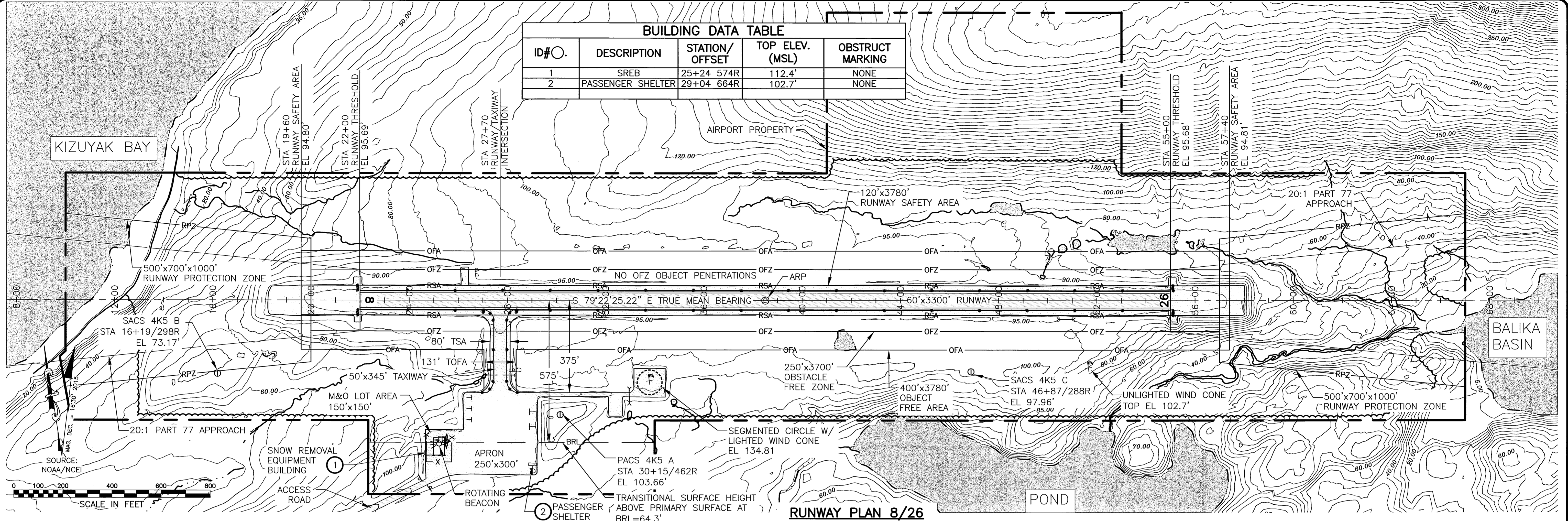
OUZINKIE AIRPORT
OUZINKIE, ALASKA
AIRPORT LAYOUT PLAN

DATA

DATE: 4/17/2017
SHEET: 2 of 8

Date Plotted: 4/17/2017, 4:10 PM
 Layout Name: 3 EXISTING LAYOUT
 File Name: U:\20170228\Ouzinkie\Drawings\ALP-405-3_LAYOUTS.dwg
 Designed By: MMW
 Drawn By: RWW
 Checked By: JGL

BUILDING DATA TABLE				
ID#	DESCRIPTION	STATION/OFFSET	TOP ELEV. (MSL)	OBSTRUCT MARKING
1	SREB	25+24 574R	112.4'	NONE
2	PASSENGER SHELTER	29+04 664R	102.7'	NONE



STATE OF ALASKA
DEPARTMENT OF TRANSPORTATION
AND PUBLIC FACILITIES
CENTRAL REGION

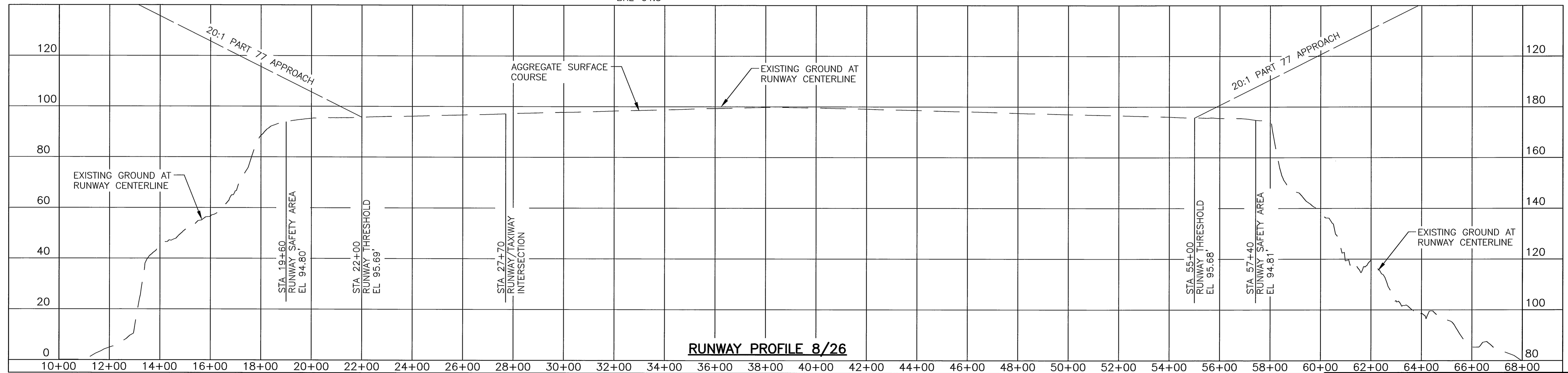
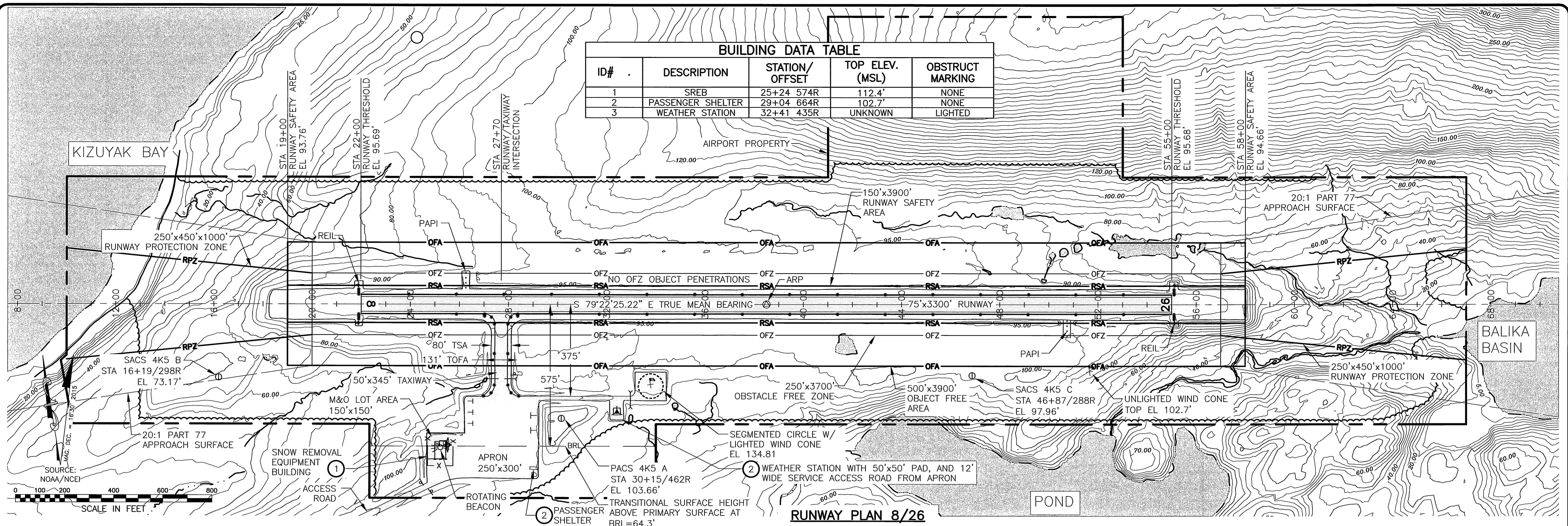
BY	DATE	REVISION
	11/3/15	AS-BUILT PER AKSAS 52637
	4/15/10	MODIFY RUNWAY ELEVATION
	3/15/10	ADDED NEAR TERM PLAN

OUZINKIE AIRPORT
 OUZINKIE, ALASKA
 AIRPORT LAYOUT PLAN
 EXISTING LAYOUT

DATE: 4/17/2017
 SHEET: 3 OF 8

Date Plotted: 4/17/2017, 3:36 PM
 Layout Name: 4 ULTIMATE LAYOUT
 File Name: U:\201700282\Ouzinkie\Drawings\465-3_LAYOUTS.dwg
 Designed By: MWM
 Drawn By: RWW
 Checked By: JGL

BUILDING DATA TABLE				
ID#	DESCRIPTION	STATION/OFFSET	TOP ELEV. (MSL)	OBSTRUCT MARKING
1	SREB	25+24 574R	112.4'	NONE
2	PASSENGER SHELTER	29+04 664R	102.7'	NONE
3	WEATHER STATION	32+41 435R	UNKNOWN	LIGHTED



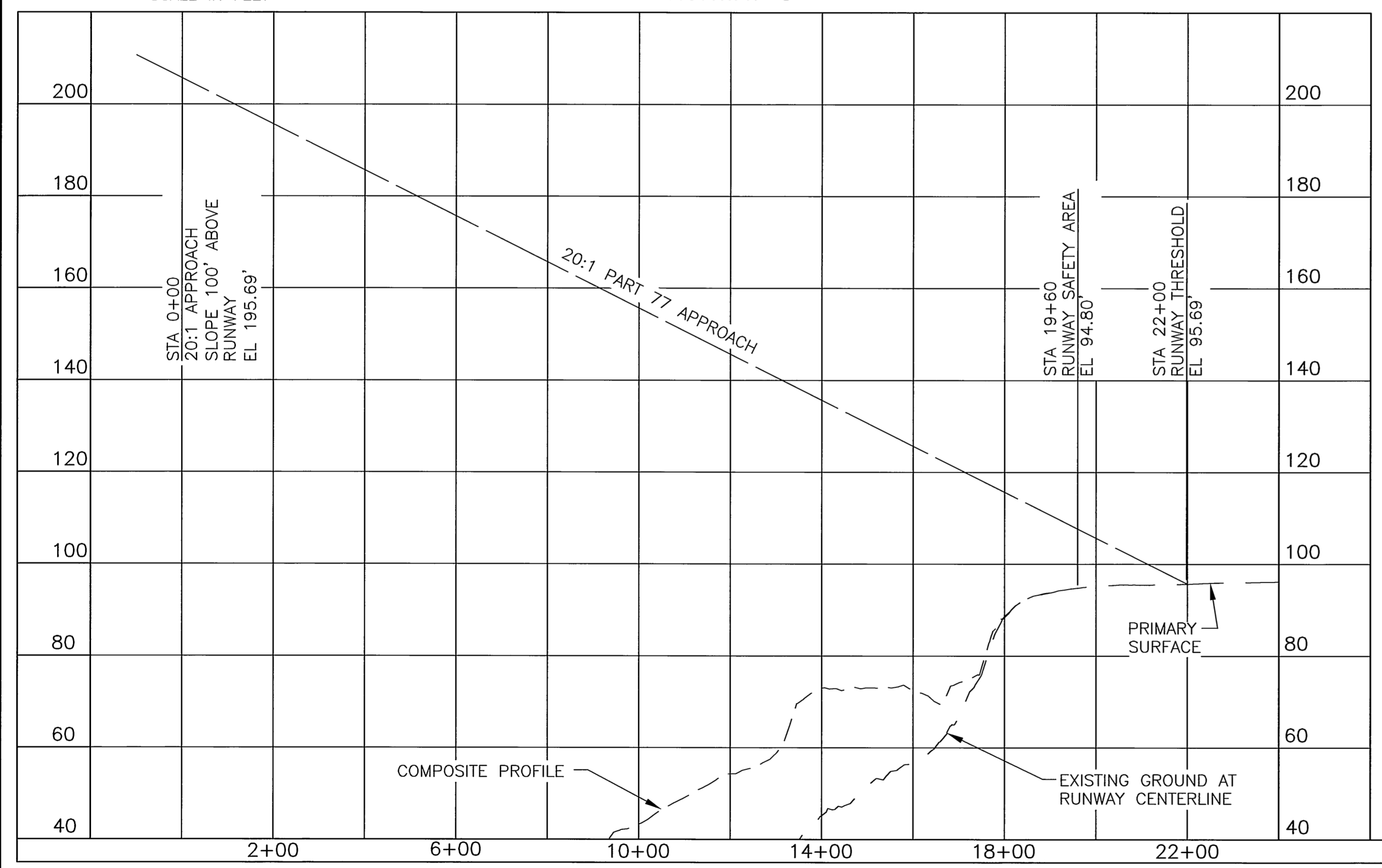
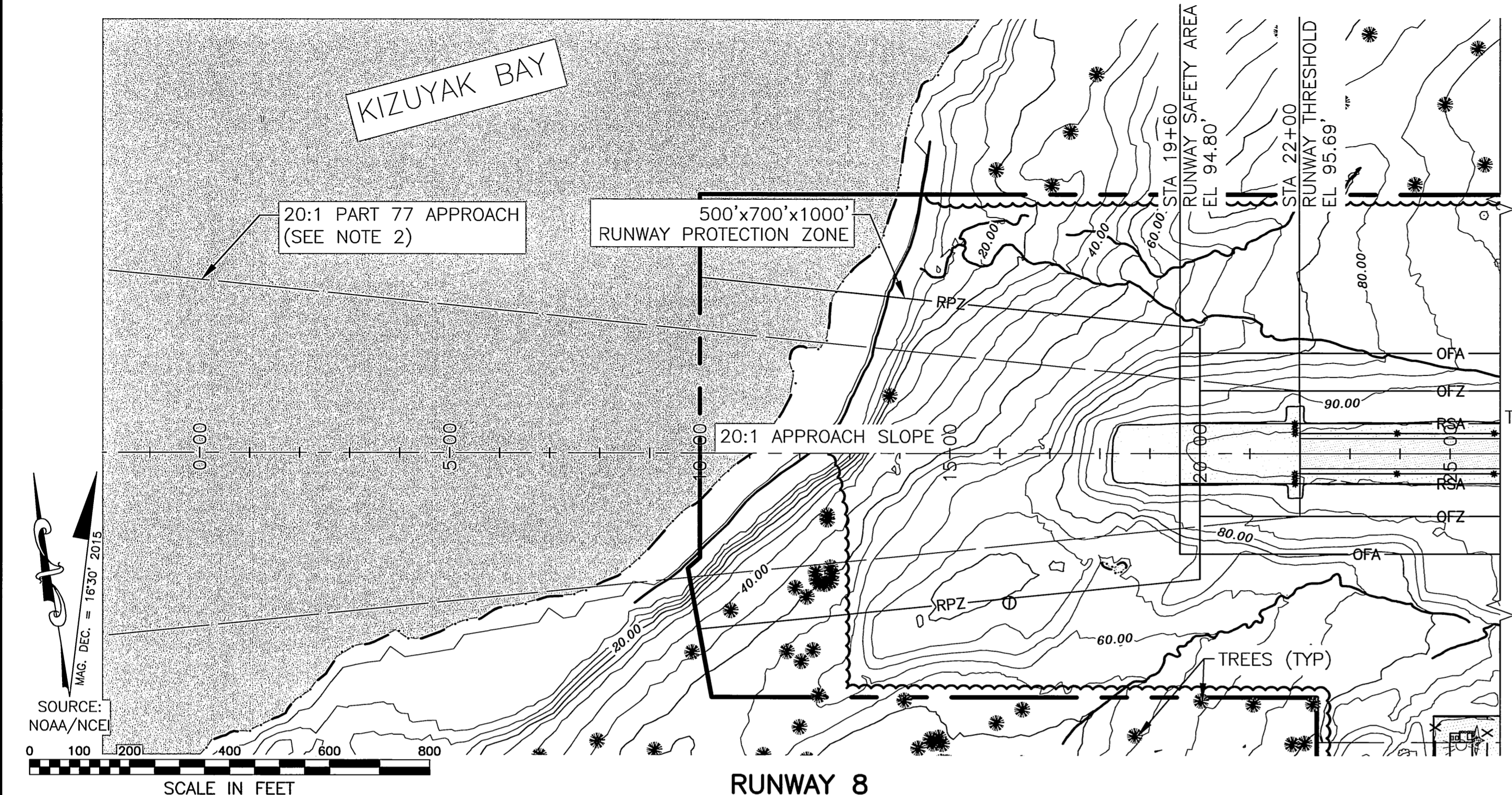
STATE OF ALASKA
DEPARTMENT OF TRANSPORTATION
AND PUBLIC FACILITIES
CENTRAL REGION

BY	DATE	REVISION
	11/3/15	AS-BUILT PER AKSAS 52637
	4/15/10	MODIFY RUNWAY ELEVATION
	3/15/10	REMOVED PROFILE, UPDATED PAPI PADS & REILS

OUZINKIE AIRPORT
 OUZINKIE, ALASKA
 AIRPORT LAYOUT PLAN
 ULTIMATE LAYOUT

DATE: 4/17/2017
 SHEET: 4 OF 8

Date Plotted: 4/17/2017 4:38 PM
 Layout Name: 5 - EXISTING INNER APPROACH SURF RW 8-26
 File Name: I:\A\2017\2026\Ouzinkie\A\2026\A\465-5-E-APRCH-SURF.dwg
 Designed By: MMW
 Drawn By: RWV
 Checked By: JGL

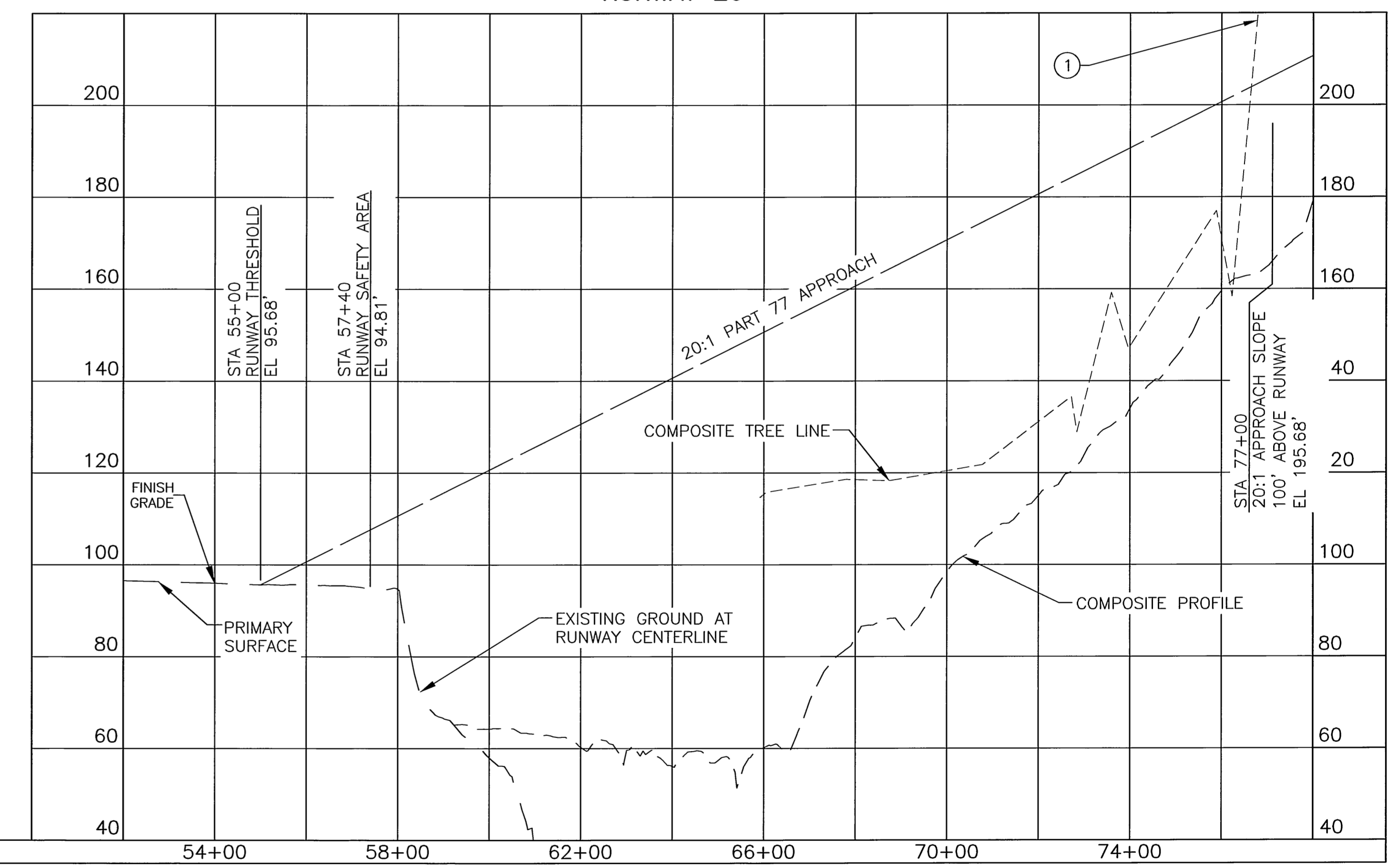
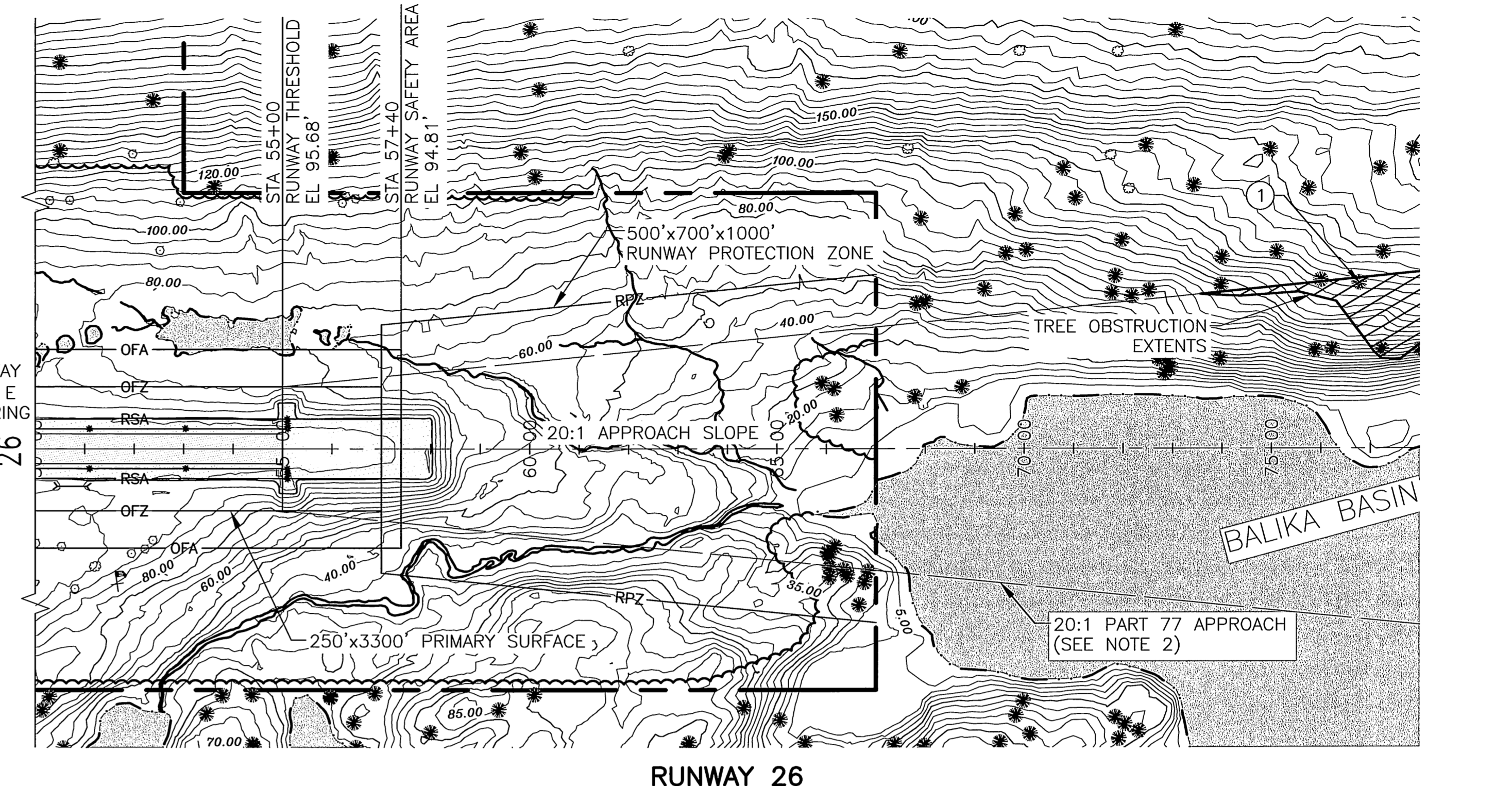


ID#	DESCRIPTION	STATION/OFFSET	ELEVATION	SURFACE PENETRATED	SURFACE ELEVATION	AMOUNT PENETRATED	DISPOSITION	STAGE TO CORRECT
	NONE							

NOTES:

- THERE ARE NO CONTROLLING OBSTRUCTIONS FOR THE APPROACH TO RUNWAY 8, THEREFORE THE OBSTRUCTION CLEARANCE SLOPE IS ESTABLISHED AS 50:1 PER FAA AC 150/5200-35, CHAP 4.
- PART 77 APPROACH SURFACE DIMENSION: 250'x1250'x5000'

REFER TO THE AIRPORT AIRSPACE DRAWING FOR PENETRATIONS OF THE OUTER APPROACH SURFACES.



ID#	DESCRIPTION	STATION/OFFSET	ELEVATION	SURFACE PENETRATED	SURFACE ELEVATION	AMOUNT PENETRATED	DISPOSITION	STAGE TO CORRECT
1	TREES (HP)	76+77/333L	250'	APPROACH	205'	45'	REMOVE	NEAR TERM

HP=HIGH POINT OF OBSTRUCTION AREA

NOTES:

- THE CONTROLLING OBSTRUCTION FOR THE APPROACH TO RUNWAY 26 ARE TREES AT STATION 75+75 520 LT, ELEVATION IS 279'. THE EXISTING OBSTRUCTION CLEARANCE SLOPE IS 10:1 PER FAA AC 150/5200-35, CHAP 4. CONTROLLING OBSTRUCTION TREES WILL BE CLEARED BY NOV. 2017.
- PART 77 APPROACH SURFACE DIMENSION: 250'x1250'x5000'

BY	DATE	REVISION
	11/3/15	AS-BUILT PER AKSAS 52637

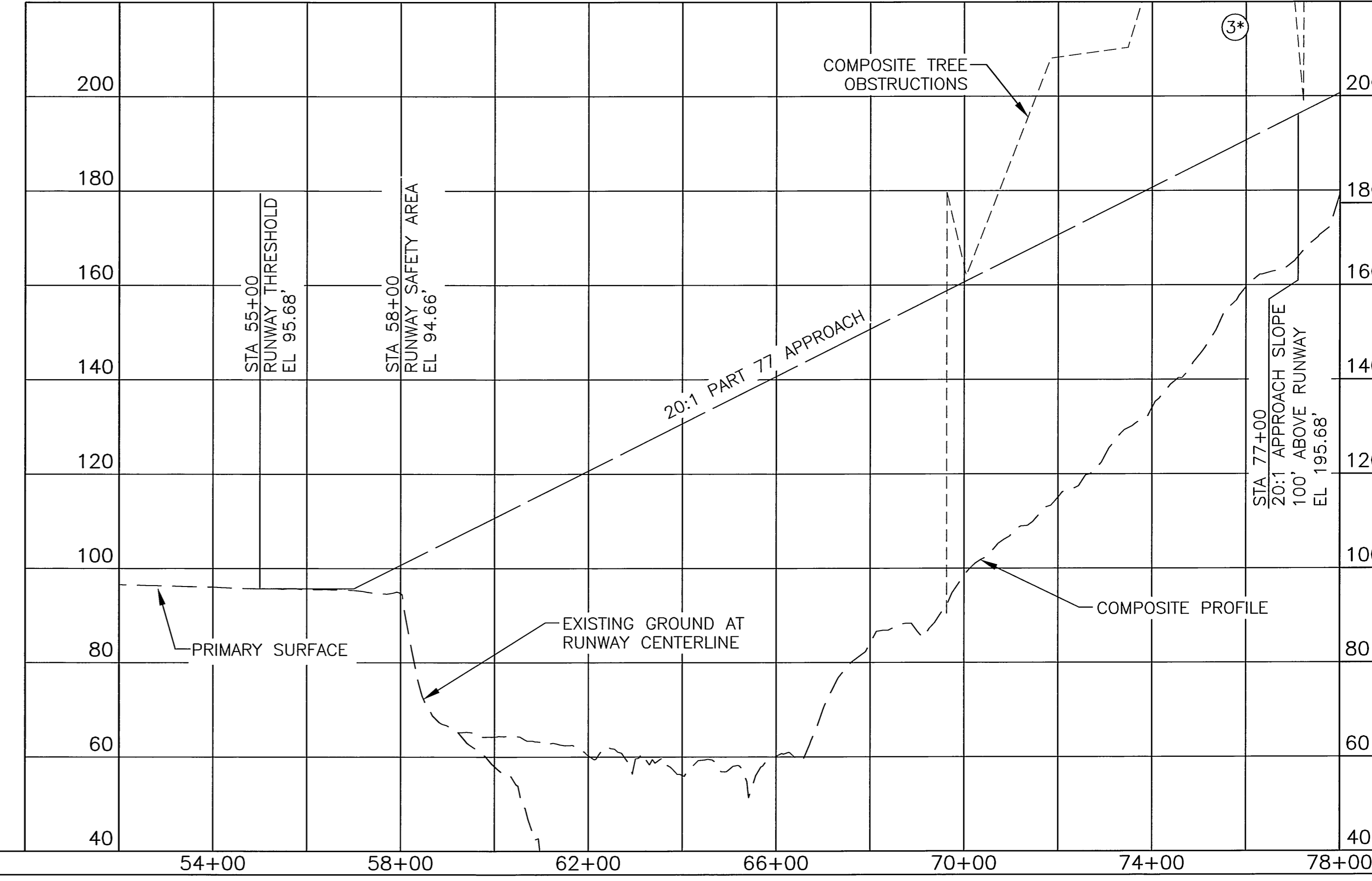
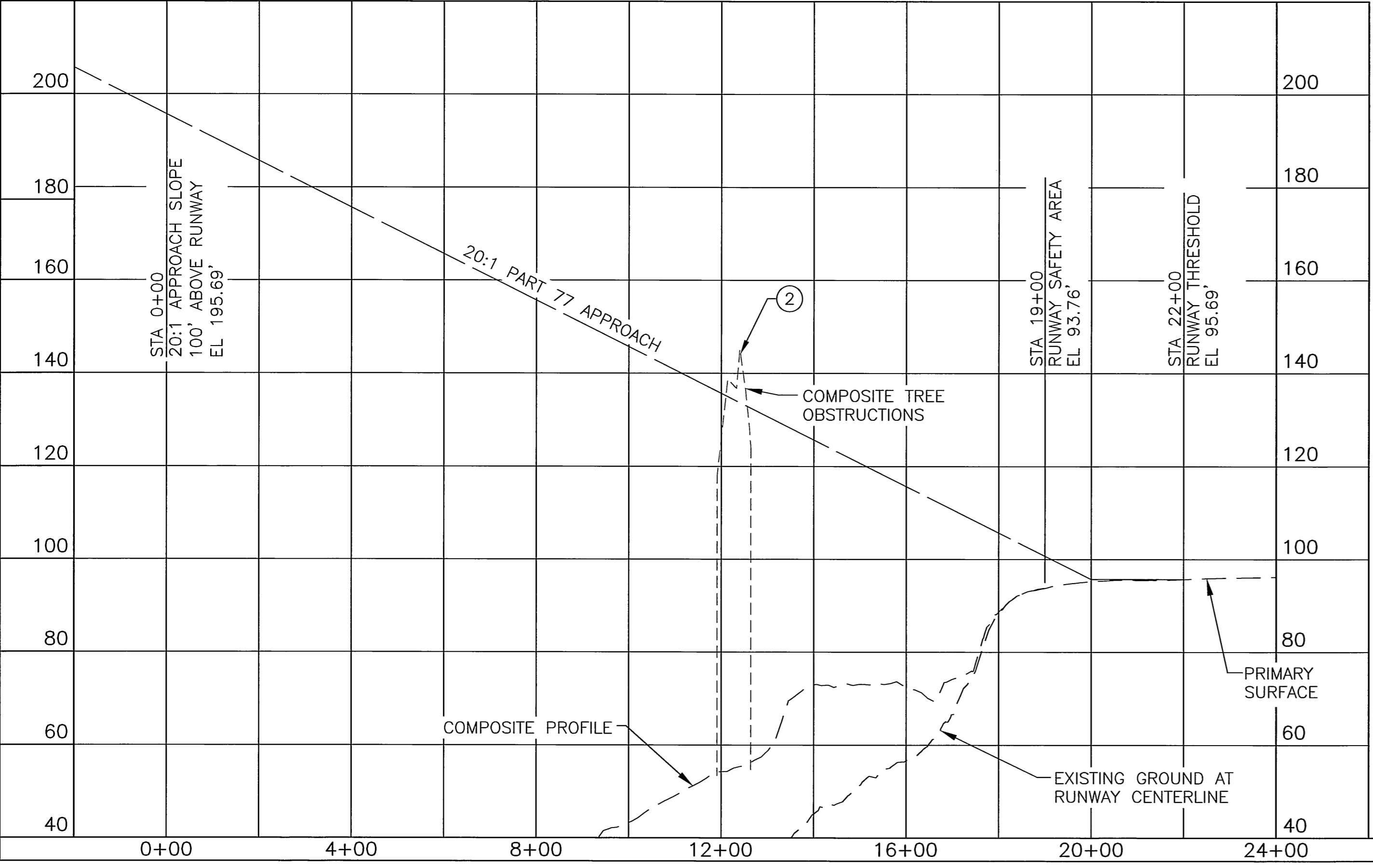
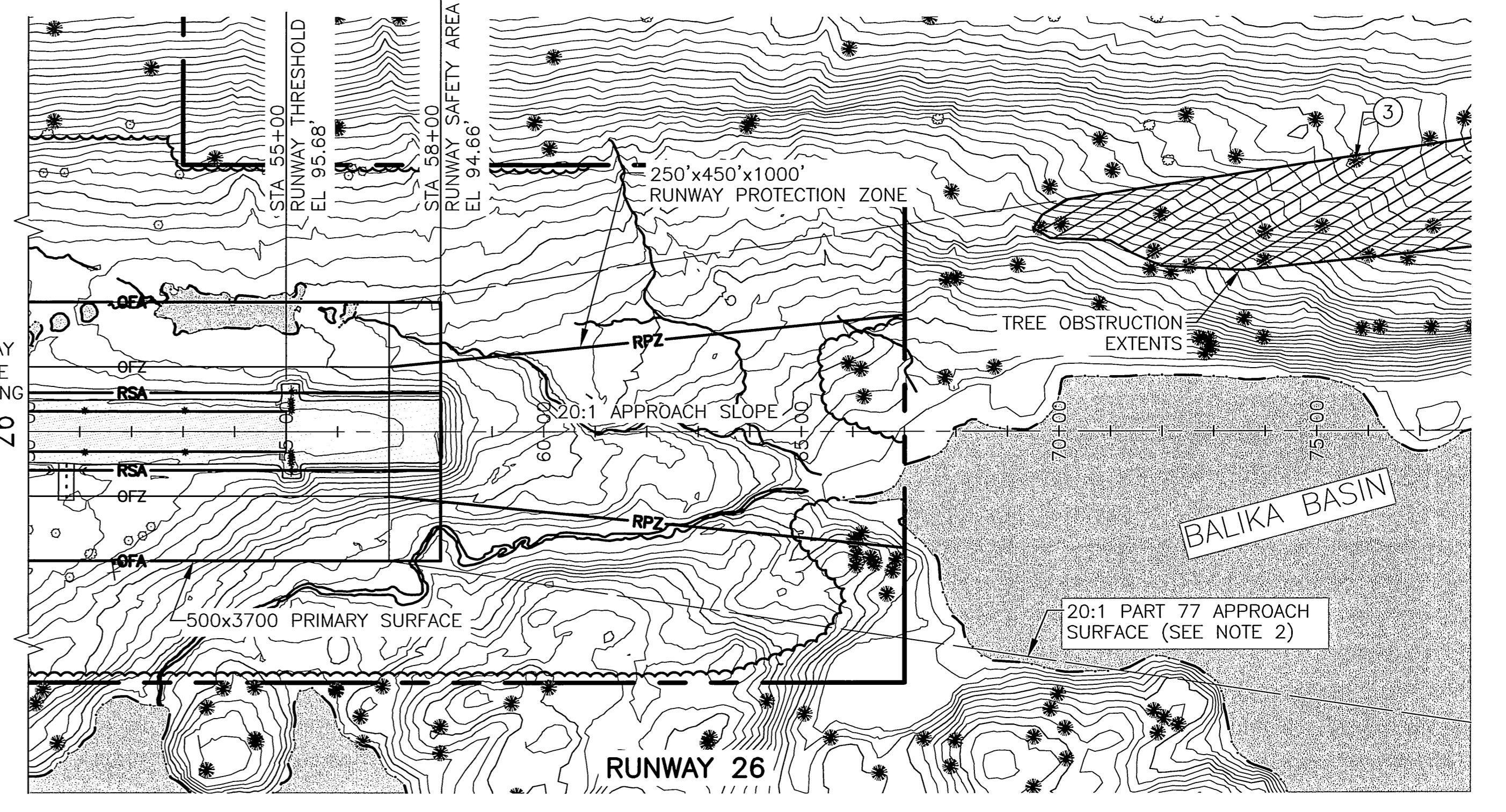
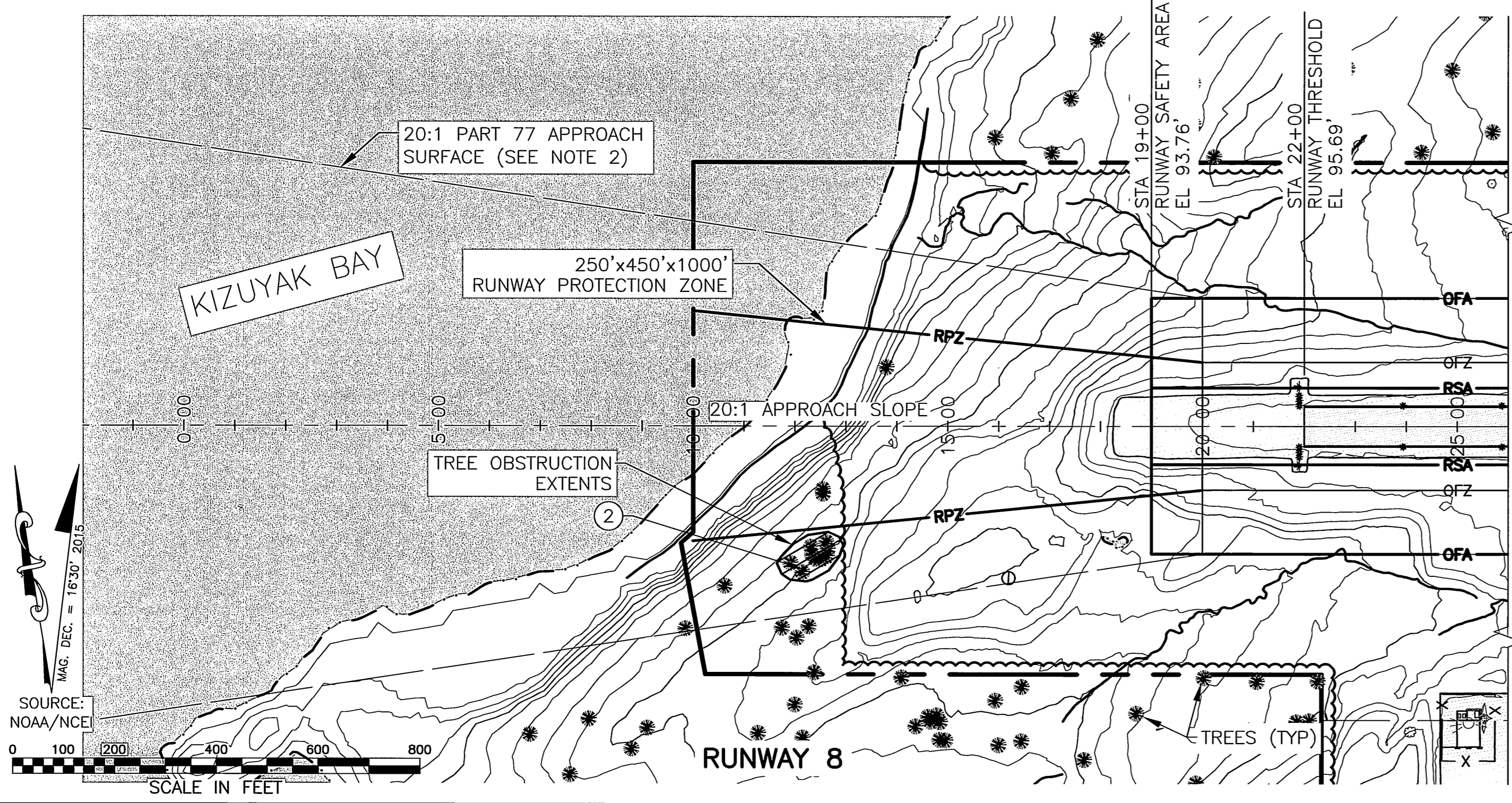
STATE OF ALASKA
DEPARTMENT OF TRANSPORTATION
AND PUBLIC FACILITIES
CENTRAL REGION

OUZINKIE AIRPORT
 OUZINKIE, ALASKA
 AIRPORT LAYOUT PLAN

EXISTING INNER PORTION OF
 THE APPROACH SURFACE - RUNWAY 8-26

DATE: 4/17/2017
 SHEET: 5 OF 8

Date Plotted: 4/17/2017, 4:37 PM
 Layout Name: 6 ULT INNER APPROCH SURF RIB-26
 File Name: U:\201700262\Ouzinkie\Drawings\ALP-6_UL-APPROCH-SURF.dwg
 Designed By: MAM
 Drawn By: RWW
 Checked By: JGL



ID#	DESCRIPTION	STATION/OFFSET	ELEVATION	SURFACE PENETRATED	SURFACE ELEVATION	AMOUNT PENETRATED	DISPOSITION	STAGE TO CORRECT
2	TREES (HP)	12+14/286R	139'	APPROACH	135'	4'	REMOVE	ULTIMATE

ID#	DESCRIPTION	STATION/OFFSET	ELEVATION	SURFACE PENETRATED	SURFACE ELEVATION	AMOUNT PENETRATED	DISPOSITION	STAGE TO CORRECT
3*	TREES (HP)	75+75/523L	279'	APPROACH	189'	90'	REMOVE	ULTIMATE

HP=HIGH POINT OF OBSTRUCTION AREA

HP=HIGH POINT OF OBSTRUCTION AREA
 *OBSTRUCTION HIGH POINT OUTSIDE OF PROFILE VIEW

- NOTES:**
- THE CONTROLLING OBSTRUCTION FOR THE APPROACH TO RUNWAY 8 ARE TREES AT STATION 12+14 286 RT, ELEVATION IS 139'. IF ALL TREES ARE REMOVED, THE OBSTRUCTION CLEARANCE SLOPE COULD BE ESTABLISHED AS 50:1 PER FAA AC 150/5200-35, CHAP 4.
 - PART 77 APPROACH SURFACE DIMENSION: 500'x2000'x5000'

REFER TO THE AIRPORT AIRSPACE DRAWING FOR PENETRATIONS OF THE OUTER APPROACH SURFACES.

- NOTES:**
- THE CONTROLLING OBSTRUCTION FOR THE APPROACH TO RUNWAY 26 IS A TREE AT STATION 75+75 523 LT, ELEVATION IS 279'. IF ALL TREES ARE REMOVED, THE OBSTRUCTION CLEARANCE SLOPE COULD BE ESTABLISHED AS 28:1 (DUE TO TERRAIN) PER FAA AC 150/5200-35, CHAP 4.
 - PART 77 APPROACH SURFACE DIMENSION: 500'x2000'x5000'

BY	DATE	REVISION
	11/3/15	AS-BUILT PER AKSAS 52637
	4/15/10	MODIFY PROFILE
	3/15/10	CHANGED PROFILE & APPROACH SLOPE TO 20:1

STATE OF ALASKA
DEPARTMENT OF TRANSPORTATION
AND PUBLIC FACILITIES
CENTRAL REGION

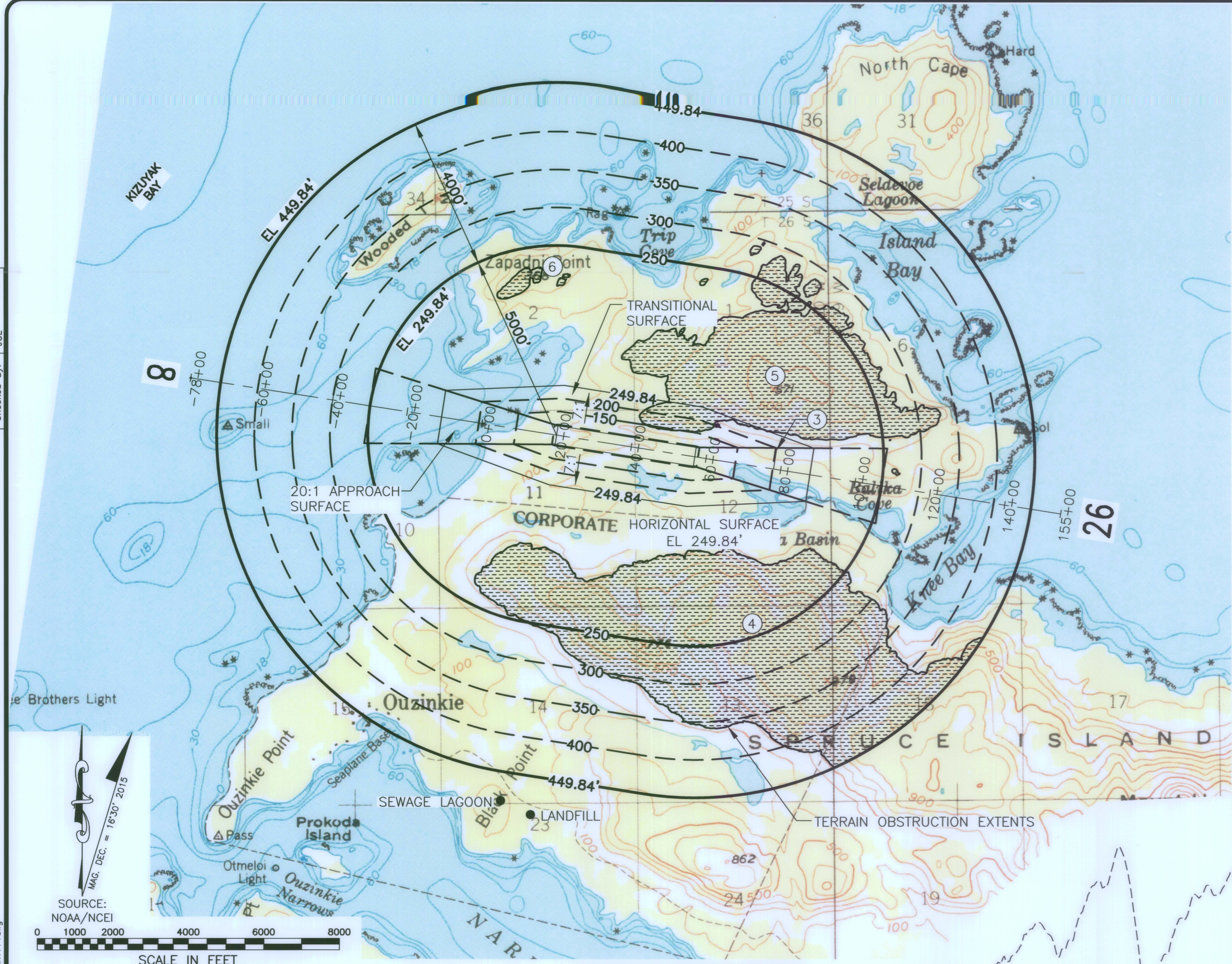
OUZINKIE AIRPORT
OUZINKIE, ALASKA
AIRPORT LAYOUT PLAN

ULTIMATE INNER PORTION OF
 THE APPROACH SURFACE - RUNWAY 8-26

DATE: 4/17/2017
 SHEET: 6 OF 8

Designed By: MMM
 Drawn By: RWW
 Checked By: JGL

Date Plotted: 4/17/2017, 4:40 PM
 Layout Name: 7 PART 77
 File Name: U:\20470082\Ouzinkie\Ouzinkie\Sheets\ALP-4K-7_AIRSPACE_PART77.dwg



RUNWAY 8/26 PLAN

LEGEND

F.A.R. PART 77 SURFACE PENETRATIONS

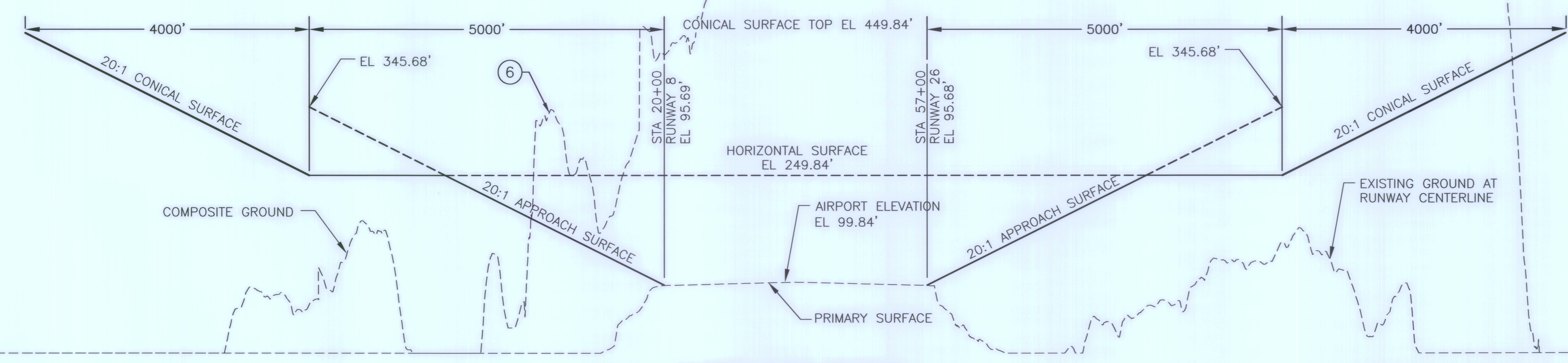
OBSTRUCTION, SEE PLAN VIEW

- NOTES:**
- AIRPORT ELEVATION IS 99.84'
 - RUNWAY SEPARATION DISTANCES FROM LANDFILL AND SEWAGE LAGOON ARE 9,000' AND 7,500', RESPECTIVELY
 - PART 77: UTILITY NON PRECISION
 PRIMARY SURFACE WIDTH - 500'
 RADIUS OF HORIZONTAL SURFACE - 5,000'
 APPROACH SURFACE WIDTH AT END - 2,000'
 APPROACH SURFACE LENGTH - 5,000'
 APPROACH SLOPE - 20:1
 - REFER TO INNER PORTION OF THE APPROACH SURFACE DRAWINGS FOR CLOSE-IN OBSTRUCTIONS.
 - THERE ARE NO KNOWN HEIGHT RESTRICTIONS

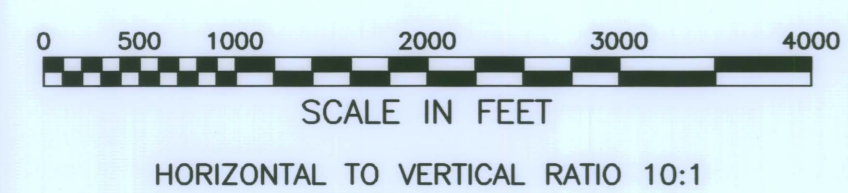
PART 77 SURFACE OBSTRUCTIONS TABLE (OUTER PORTION RW 8/26)

ID#	DESCRIPTION	STATION/OFFSET	ELEVATION	SURFACE PENETRATED	SURFACE ELEVATION	AMOUNT PENETRATED	DISPOSITION	STAGE TO CORRECT
3	TREES (HP)	80+24/590L	311'	APPROACH	212'	99'	REMOVE	NEAR TERM
4	TERRAIN (HP)	82+10/4150R	884'	CONICAL/HORIZ.	249.84'	635'	TO REMAIN	N/A
5	TERRAIN (HP)	82+30/2400L	619'	CONICAL/HORIZ.	249.84'	369'	TO REMAIN	N/A
6	TERRAIN (HP)	3+80/3800L	340'	HORIZONTAL	249.84'	90'	TO REMAIN	N/A

NOTES: 1. TERRAIN ALSO INCLUDES TREE AND BUSH PENETRATIONS
 2. (HP)=HIGH POINT OF TERRAIN OBSTRUCTION



RUNWAY 8/26 PROFILE



HORIZONTAL TO VERTICAL RATIO 10:1

BY	DATE	REVISION
	11/3/15	AS-BUILT PER AKSAS 52637
	4/15/10	MODIFY AIRPORT ELEVATION & PROFILE
	3/15/10	UPDATE NOTES, TABLE, ADDED PROFILE

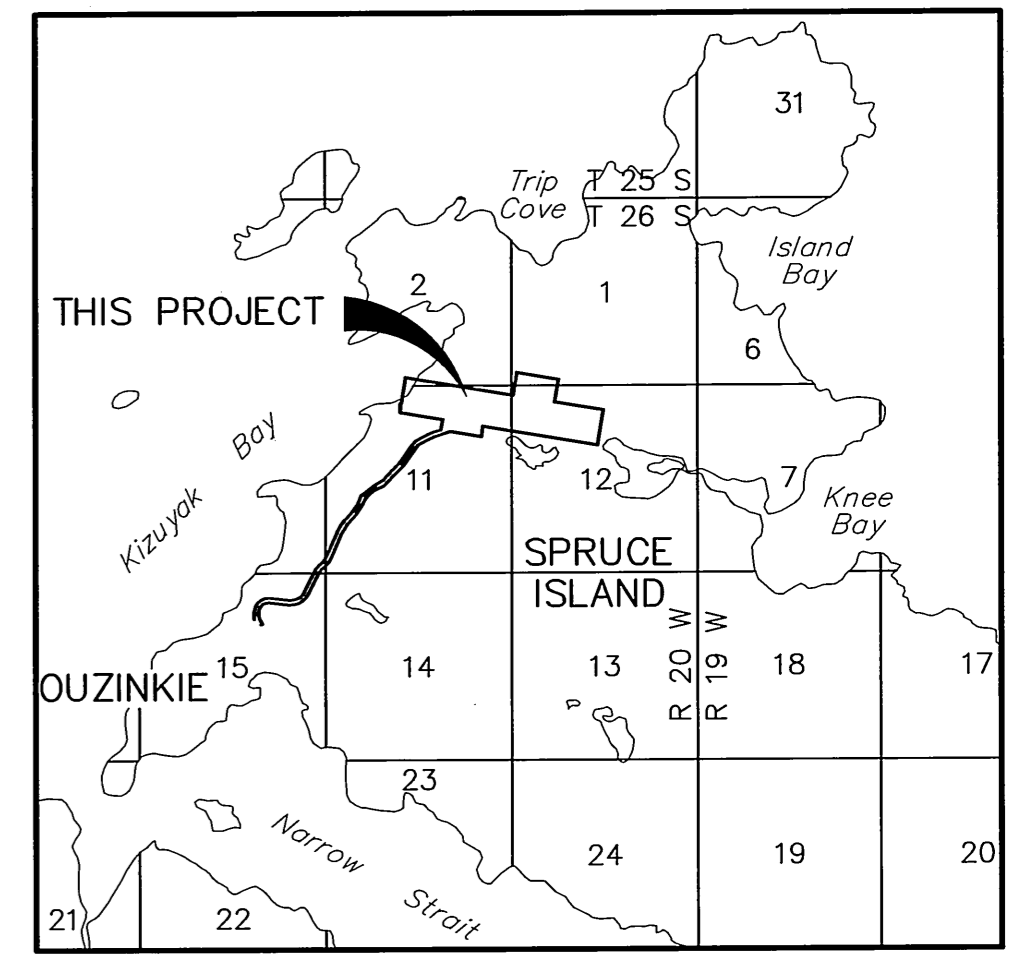
**STATE OF ALASKA
 DEPARTMENT OF TRANSPORTATION
 AND PUBLIC FACILITIES
 CENTRAL REGION**

**OUZINKIE AIRPORT
 OUZINKIE, ALASKA
 AIRPORT LAYOUT PLAN**

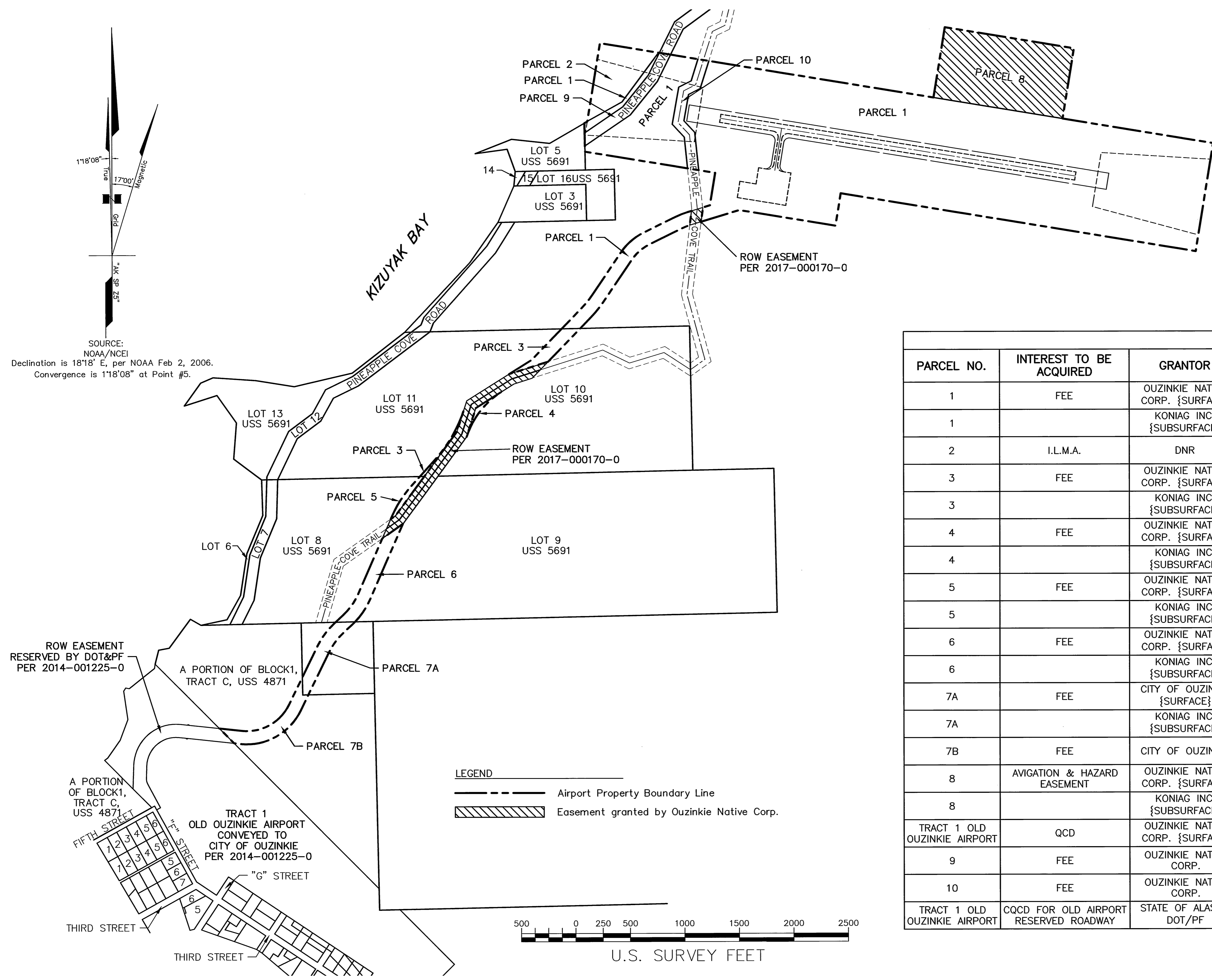
AIRPORT AIRSPACE
 (F.A.R. PART 77)

DATE: 4/17/2017
 SHEET: 7 OF 8

Date Plotted: 4/17/2017 4:42 PM
 Layout Name: 8 AIRPORT PROP
 File Name: U:\2017\00225\Ouzinkie\AIP-465-B-PROPERTY.dwg
 Designed By: OAM
 Drawn By: CAS
 Checked By: CAS



VICINITY MAP
 U.S.G.S. QUAD. KODIAK D-2
 T26S, R20W, SEWARD MERIDIAN, AK
 KODIAK RECORDING DISTRICT
 1" = 1 MILE



SOURCE:
 NOAA/NCEI
 Declination is 18'18" E, per NOAA Feb 2, 2006.
 Convergence is 118'08" at Point #5.

BALIKA BASIN

PROPERTY STATUS

PARCEL NO.	INTEREST TO BE ACQUIRED	GRANTOR	GRANTEE	ACREAGE	RECORDED DOCUMENT NO.	ACQUIRED UNDER AIP NO.
1	FEE	OUZINKIE NATIVE CORP. {SURFACE}	STATE OF ALASKA, DOT/PF	133.127 AC±	2008-002195-0	3-02-0480-001-2009
1		KONIAG INC. {SUBSURFACE}			2008-002198-0	3-02-0480-001-2009
2	I.L.M.A.	DNR	STATE OF ALASKA, DOT/PF	5.484 AC±	2015-000573-0	3-02-0480-002-2011
3	FEE	OUZINKIE NATIVE CORP. {SURFACE}	STATE OF ALASKA, DOT/PF	1.579 AC±	2008-002195-0	3-02-0480-001-2009
3		KONIAG INC. {SUBSURFACE}			2008-002198-0	3-02-0480-001-2009
4	FEE	OUZINKIE NATIVE CORP. {SURFACE}	STATE OF ALASKA, DOT/PF	0.197 AC±	2008-002195-0	3-02-0480-001-2009
4		KONIAG INC. {SUBSURFACE}			2008-002198-0	3-02-0480-001-2009
5	FEE	OUZINKIE NATIVE CORP. {SURFACE}	STATE OF ALASKA, DOT/PF	0.437 AC±	2008-002195-0	3-02-0480-001-2009
5		KONIAG INC. {SUBSURFACE}			2008-002198-0	3-02-0480-001-2009
6	FEE	OUZINKIE NATIVE CORP. {SURFACE}	STATE OF ALASKA, DOT/PF	2.603 AC±	2008-002195-0	3-02-0480-001-2009
6		KONIAG INC. {SUBSURFACE}			2008-002198-0	3-02-0480-001-2009
7A	FEE	CITY OF OUZINKIE {SURFACE}	STATE OF ALASKA, DOT/PF	2.022 AC±	2008-001577-0	3-02-0480-001-2009
7A		KONIAG INC. {SUBSURFACE}			2008-001591-0	3-02-0480-001-2009
7B	FEE	CITY OF OUZINKIE	STATE OF ALASKA, DOT/PF	2.527 AC±	2008-001577-0	3-02-0480-001-2009
8	AVIGATION & HAZARD EASEMENT	OUZINKIE NATIVE CORP. {SURFACE}	STATE OF ALASKA, DOT/PF	17.906 AC±	2008-002196-0	3-02-0480-001-2009
8		KONIAG INC. {SUBSURFACE}			2008-002197-0	3-02-0480-001-2009
TRACT 1 OLD OUZINKIE AIRPORT	QCD	OUZINKIE NATIVE CORP. {SURFACE}	STATE OF ALASKA, DOT/PF	74.912 AC	BK. 54, PG. 304	11332
9	FEE	OUZINKIE NATIVE CORP.	STATE OF ALASKA, DOT/PF	2.518 AC	2016-000979-0	3-02-0480-002-2011
10	FEE	OUZINKIE NATIVE CORP.	STATE OF ALASKA, DOT/PF	2.582 AC	2016-000979-0	3-02-0480-002-2011
TRACT 1 OLD OUZINKIE AIRPORT	CQCD FOR OLD AIRPORT RESERVED ROADWAY	STATE OF ALASKA, DOT/PF	CITY OF OUZINKIE	3.77 AC	2014-001225-0	3-02-0480-002-2011

BY	DATE	REVISION
PFL	2/10/17	ADD ROW ESMTS & PARCELS 9-10, UPDATE PROP STATUS
OAM	3/15/10	UPDATED PROPERTY STATUS

STATE OF ALASKA
DEPARTMENT OF TRANSPORTATION
AND PUBLIC FACILITIES
CENTRAL REGION

OUZINKIE AIRPORT
 OUZINKIE, ALASKA
 AIRPORT LAYOUT PLAN
 AIRPORT PROPERTY MAP

DATE: 4/17/2017
 SHEET: 8 OF 8