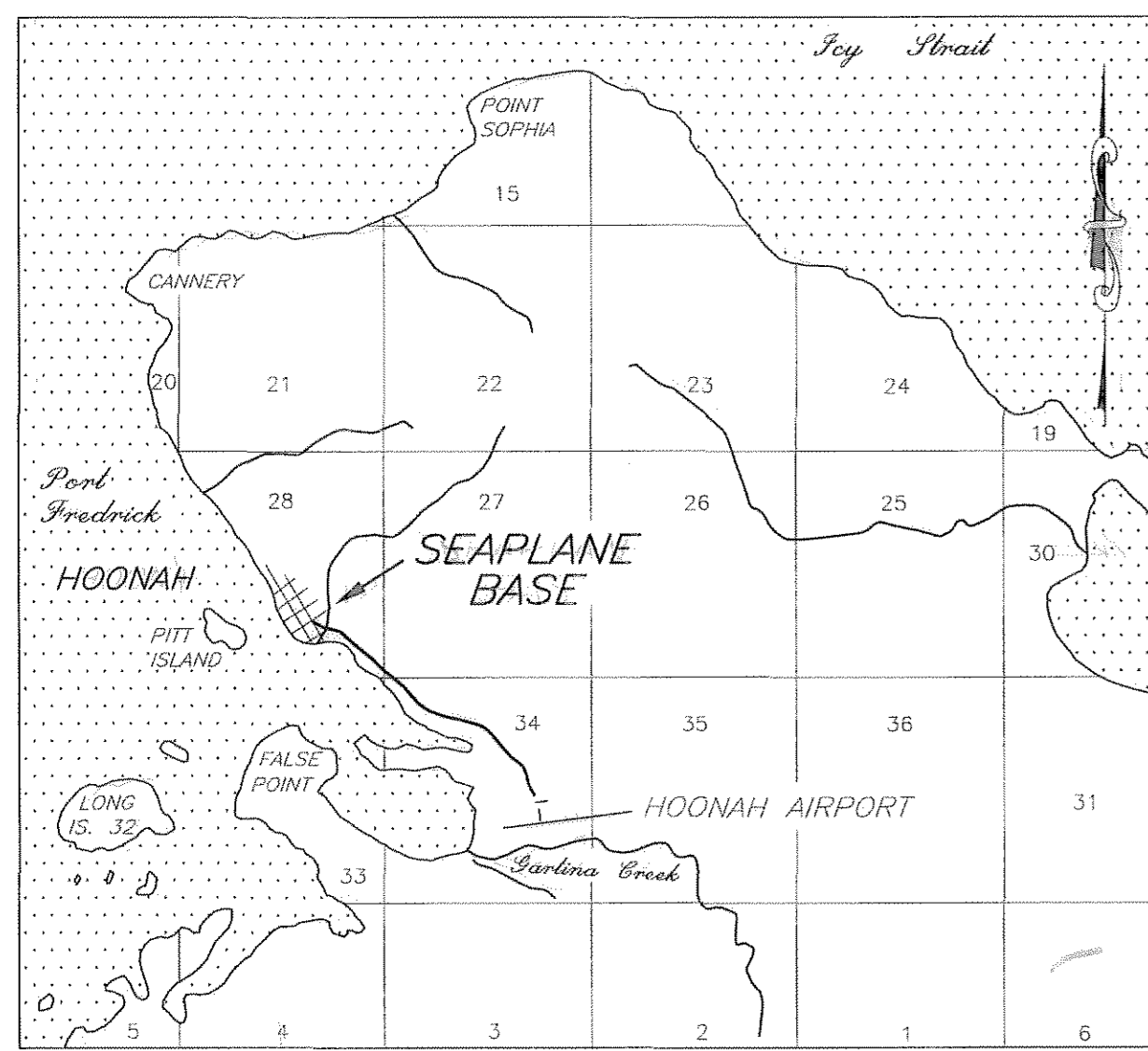


LOCATION MAP



VICINITY MAP

FACILITY INFORMATION	
ITEM	
FACILITY ID	OOH
COORDINATES (MAIN FLOAT)	N 58° 06' 28.82" W 135° 26' 52.42"
LIGHTING	NONE
NAVAIDS	WIND CONE

BASIC DATA TABLE		
SEA LANE		
ITEM	EXISTING	ULTIMATE
EFFECTIVE GRADIENT	0.00%	0.00%
APPROACH SURFACE	VISUAL	VISUAL
MARKINGS	NONE	NONE
LIGHTING	NONE	NONE

PLANNED: V.S.
 DRAWN:
 CHECKED: V.S.

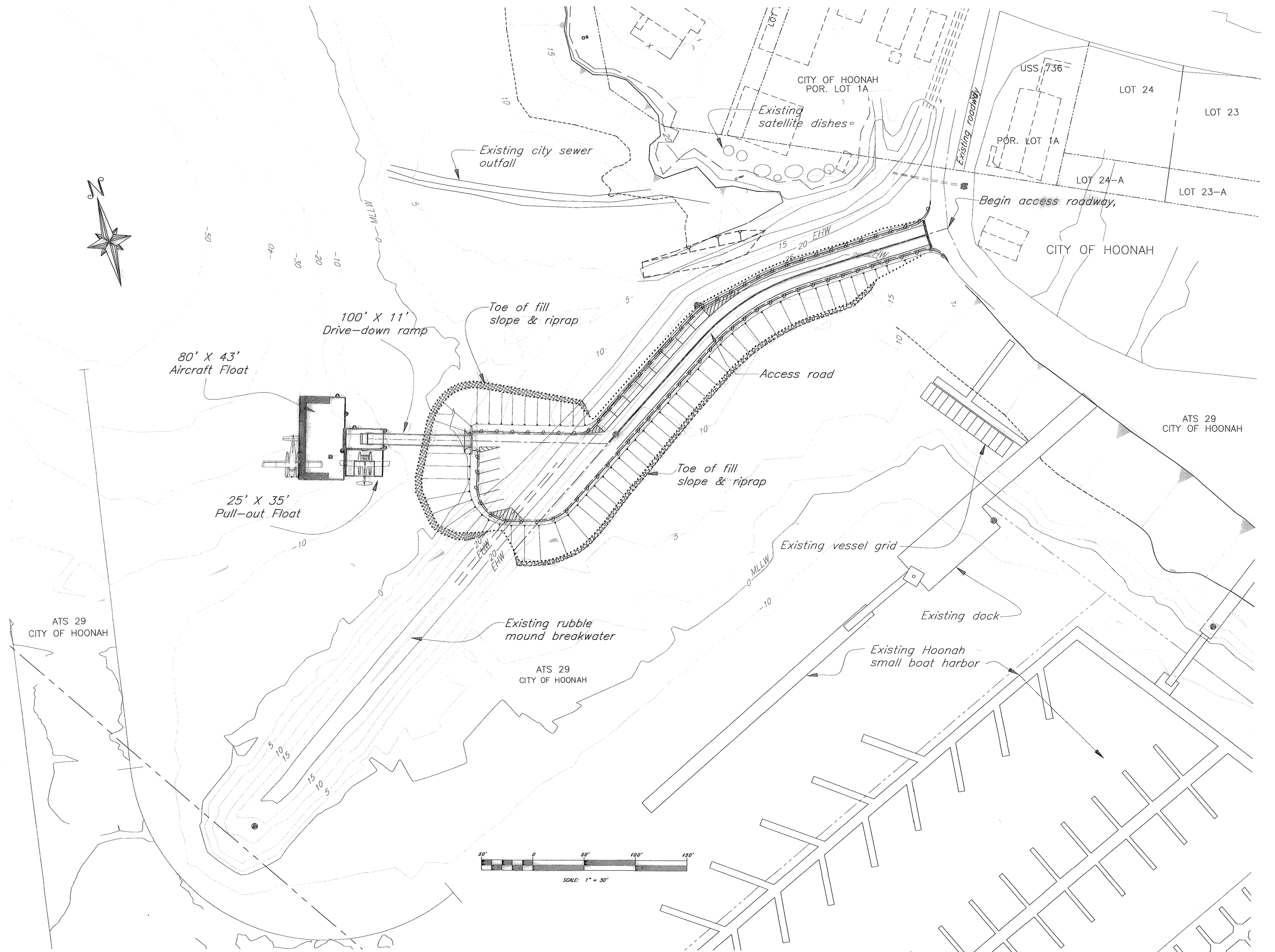
STATE OF ALASKA
 DEPARTMENT OF TRANSPORTATION
 AND PUBLIC FACILITIES
 SOUTHEAST REGION PLANNING

PREVIOUS REVISION DATE: March 2, 2004
 APPROVED: *[Signature]* DATE: 6/15/06
 VERNE SKAGERBERG, TRANSPORTATION PLANNER, FOR
 ANDY HUGHES, CHIEF OF PLANNING

FAA AIRSPACE REVIEW NO: 2003-AAL-71-NRA
 FAA APPROVAL DATE: 6/11/06
 BY: *[Signature]*
 FAA AIRPORT DIVISION, ALASKA REGION, AAL-600
 SUBJECT TO CONDITIONS IN LETTER DATED: -
 PREVIOUS ALP FAA APPROVAL DATE: March 30, 2004

Hoonah Seaplane Terminal
 Seaplane Terminal Layout Plan

SHEET
 1 OF
 1



M:\1_Working_Files\Airports\ALP\hml\SPB\As-built ALP 2006.dwg