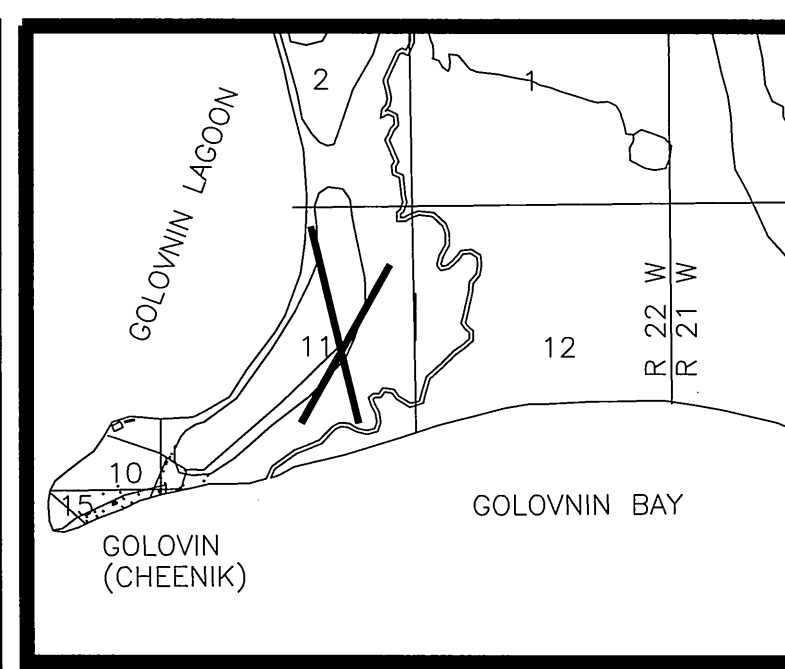
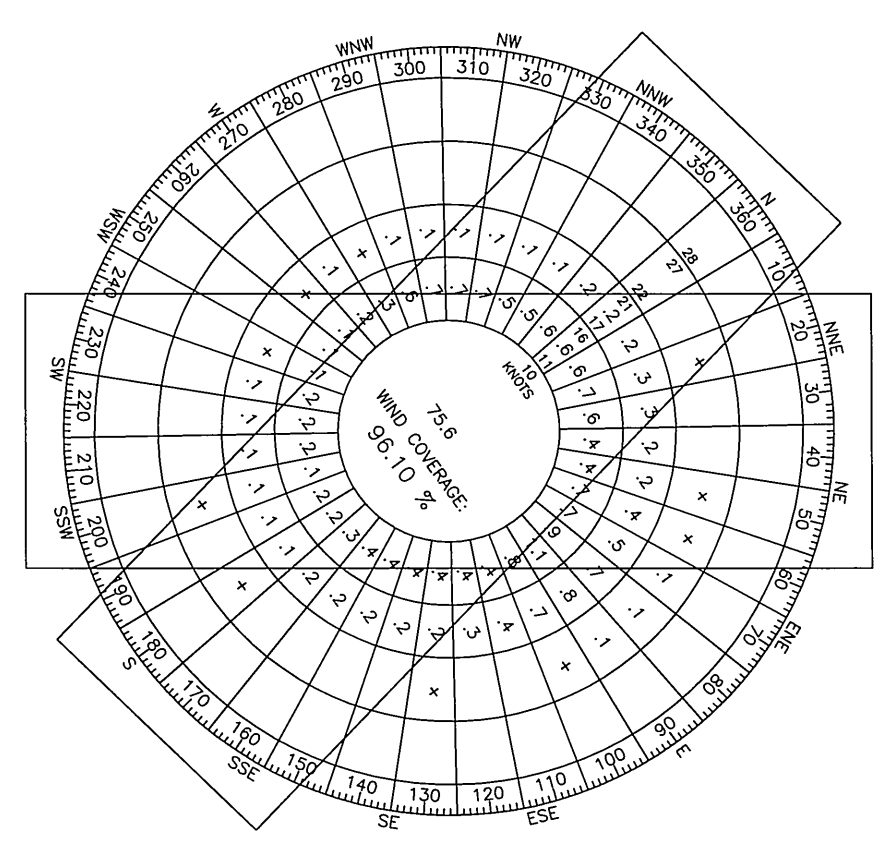


LOCATION MAP
NO SCALE



VICINITY MAP
NO SCALE
SEC 11, T 11 S, R 22 W
KRM, USGS SOLOMON (C-2 & 3)



WIND DATA
 SOURCE: AEIDC, UNIV. OF ALASKA CLIMATE CENTER
 STATION: GOLOVIN
 PERIOD: 11/06/85 - 3/10/87
 WIND COVERAGE R/W 02/20: 86.6% @ 10.5 kn., 91.8% @ 13 kn., 97.0% @ 16 kn., 99.6% @ 20 kn.
 WIND COVERAGE R/W 15/33: 87.2% @ 10.5 kn., 91.6% @ 13 kn., 95.8% @ 16 kn., 99.1% @ 20 kn.
 COMBINED WIND COVERAGE @ 13 kn.: 96.1%



AIRPORT DATA		
NATIONAL AIRPORT IDENTIFIER = GLV	EXISTING	ULTIMATE
AIRPORT ELEVATION (NAVD 88)	53.3'	56.7'
AIRPORT REFERENCE POINT (ARP)	LAT. N 64°33'06.89"	LONG. W 163°00'26.08"
(ULT. ARP AT R/W 15/33 STA. 516+00)		
MEAN DAILY MAXIMUM TEMPERATURE	60 F	
AIRPORT AND TERMINAL NAVAIDS	ROT. BEACON	+NDB/LOC/VOR
AIRPORT REFERENCE CODE (ARC)	B-II	SAME
TAXIWAY LIGHTING/MARKING	MIL/NONE	SAME
WEATHER FACILITIES	AWOS	SAME

DATA BASE CONTROL YEAR: NAD 83
 ARP IS AT R/W 02/20 STA 127+24.62, 322.02' LT.

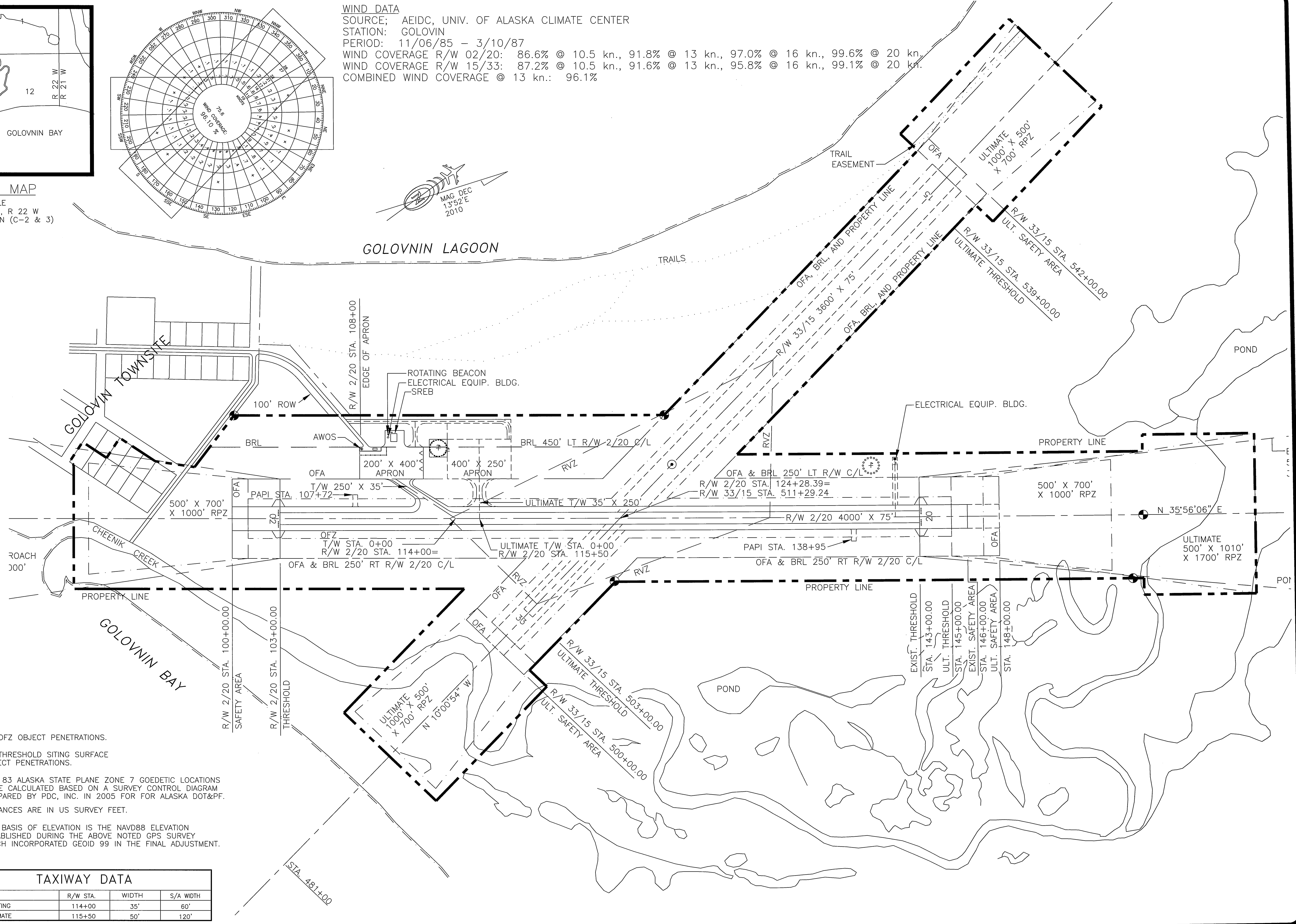
RUNWAY DATA				
	RUNWAY 02/20		RUNWAY 15/33	
	EXISTING	ULTIMATE	EXISTING	ULTIMATE
APPROACH SURFACES	34-1/20:1	34-1/34:1	NONE	20-1/20:1
VISIBILITY MINIMUMS	V/V	≥1 MI./≥1 MI.	NONE	≥1 MI./≥1 MI.
INSTRUMENT RUNWAY	NONE	20	NONE	-
RUNWAY SURFACE TYPE	GRAVEL	GRAVEL	NONE	GRAVEL
% WIND COVERAGE (12 MPH)	79.85	97.0	78.96	78.96
R/W DIMENSIONS	4000' X 75'	4000' X 75'	NONE	3600' X 75'
R/W SAFETY AREA	4600' X 150'	4800' X 150'	NONE	4200' X 150'
R/W END COORDINATES:				
THRESHOLD 02	LAT. N 64°32'45.72"	SAME	-	-
	LONG. W 163°00'52.69"	SAME	-	-
THRESHOLD 20	LAT. N 64°33'17.58"	N 64°33'19.17"	-	-
	LONG. W 162°59'58.94"	W 162°59'56.26"	-	-
THRESHOLD 15	LAT. -	-	NONE	N 64°33'29.52"
	LONG. -	-	NONE	W 163°00'35.08"
THRESHOLD 33	LAT. -	-	NONE	N 64°32'54.63"
	LONG. -	-	NONE	W 163°00'20.81"
RUNWAY LIGHTING/MARKING	MIRL/NONE	SAME	NONE	MIRL/NONE
R/W VISUAL & INST. NAVAIDS	NONE	PAPI	NONE	PAPI
R/W OBJECT FREE AREA (ROFA)	4600' X 500'	SAME	NONE	4200' X 500'
R/W OBJECT FREE ZONE (ROFZ)	4400' X 250'	SAME	NONE	4000' X 250'
TOUCHDOWN ZONE ELEVATION R/W 2	4400'	53.33'	56.77'	-
TOUCHDOWN ZONE ELEVATION R/W 20	52.46'	55.16'	-	-
TOUCHDOWN ZONE ELEVATION R/W 15	-	-	NONE	45.84'
TOUCHDOWN ZONE ELEVATION R/W 33	-	-	NONE	45.84'

LEGEND		
PROPERTY LINE	EXISTING	ULTIMATE
BUILDING RESTRICTION LINE (B.R.L.)	B.R.L.	B.R.L.
DEVELOPMENT		
WIND CONE & SEGMENTED CIRCLE		
WIND CONE ONLY		
BUILDINGS		
ROADWAYS		
OFA & BRL	OFZ	
AIRPORT REFERENCE POINT	SHORELINE/WATERLINE	
ROTATING BEACON	OFA	
ANTENNAE/TOWERS	THRESHOLD	
AWOS	RUNWAY VISIBILITY ZONE (RVZ)	

MODIFICATIONS TO STANDARD P-10			
ITEM	STANDARD	EXISTING	ULTIMATE
RUNWAY WIDTH	75'	75'	75'

- NOTES**
- NO OFZ OBJECT PENETRATIONS.
 - NO THRESHOLD SITING SURFACE OBJECT PENETRATIONS.
 - NAD 83 ALASKA STATE PLANE ZONE 7 GOEDETIC LOCATIONS WERE CALCULATED BASED ON A SURVEY CONTROL DIAGRAM PREPARED BY PDC, INC. IN 2005 FOR ALASKA DOT&PF.
 - DISTANCES ARE IN US SURVEY FEET.
 - THE BASIS OF ELEVATION IS THE NAVD88 ELEVATION ESTABLISHED DURING THE ABOVE NOTED GPS SURVEY WHICH INCORPORATED GEOID 99 IN THE FINAL ADJUSTMENT.

TAXIWAY DATA			
	R/W STA.	WIDTH	S/A WIDTH
EXISTING	114+00	35'	60'
ULTIMATE	115+50	50'	120'



DESIGN_BTD	
DRAWN_BTD	11/6/98
CHECKED_RJS	

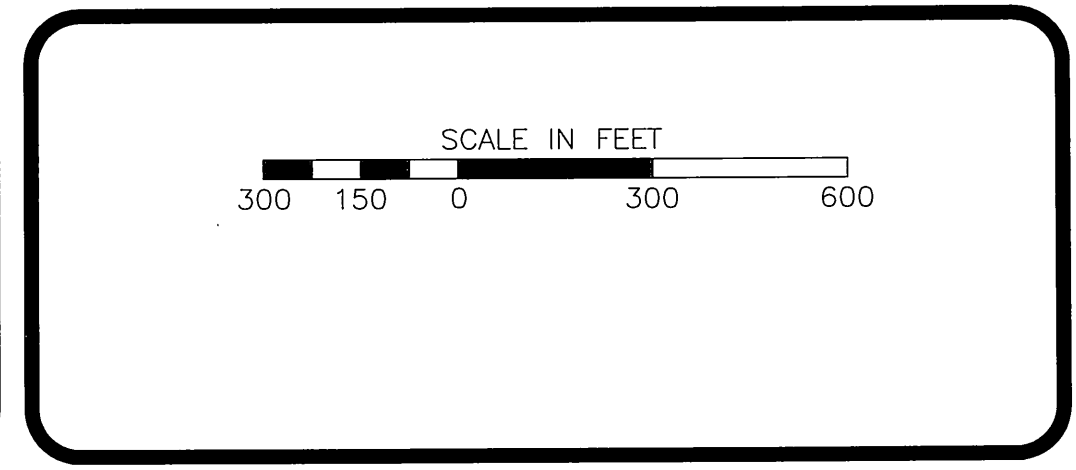
BY	DATE	REVISIONS
		UPDATED PER PROJECT 65034.
		AIP 3-02-0106-03 AS-BUILTS
		& AC 150/5300-13, CHG 4&5

STATE OF ALASKA
 DEPARTMENT OF TRANSPORTATION AND PUBLIC FACILITIES
 NORTHERN REGION-DESIGN AND CONSTRUCTION-AVIATION

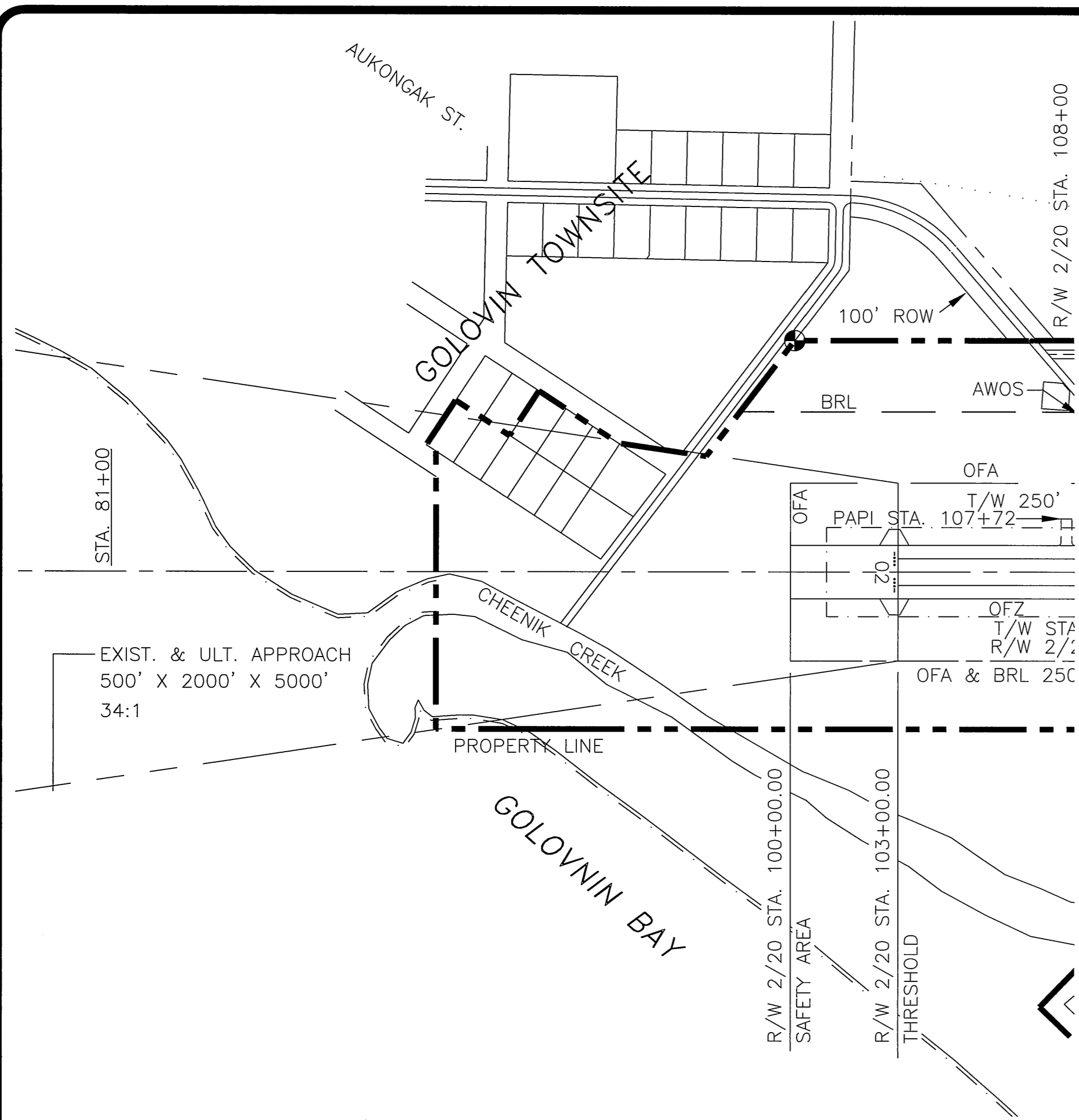
APPROVED: DATE: 5/11/2010
 RYAN F. ANDERSON, P.E. DESIGN GROUP CHIEF

AIRPORT LAYOUT PLAY APPROVED
 BY LETTER DATED: 6-12-10

AIRPORTS DIVISION
 ALASKAN REGION, AAL-601
 AIRSPACE REVIEW 05AAL-181NRA



GOLOVIN AIRPORT
 AIRPORT LAYOUT PLAN



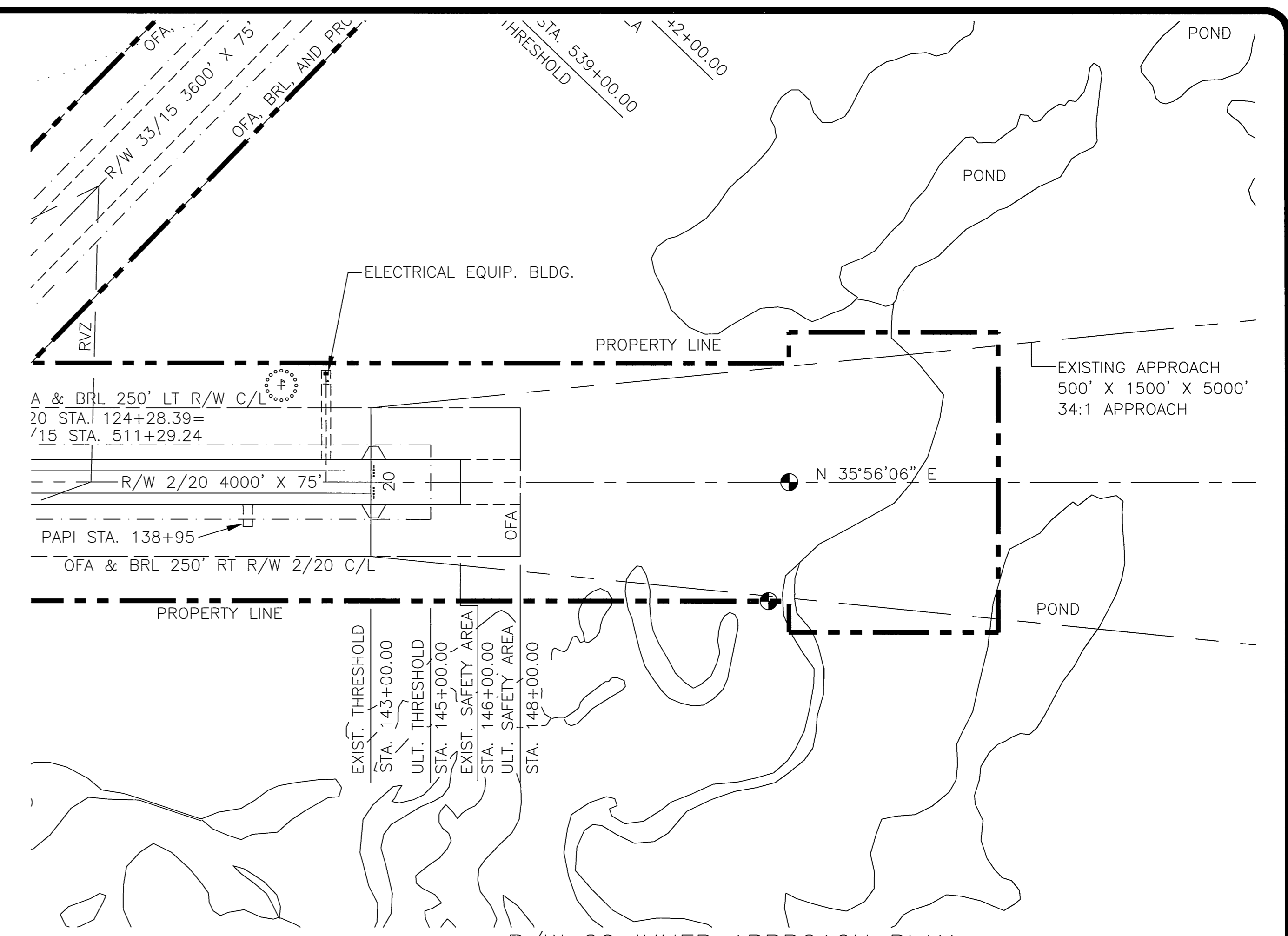
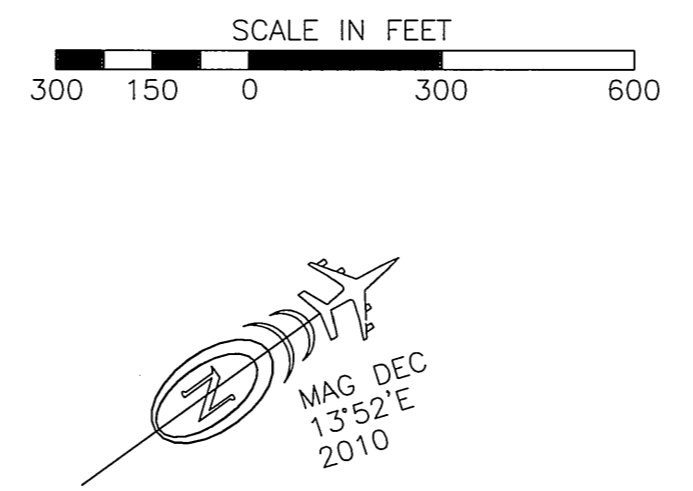
R/W 2 INNER APPROACH PLAN

OBSTRUCTION TABLE: R/W 2 APPROACH

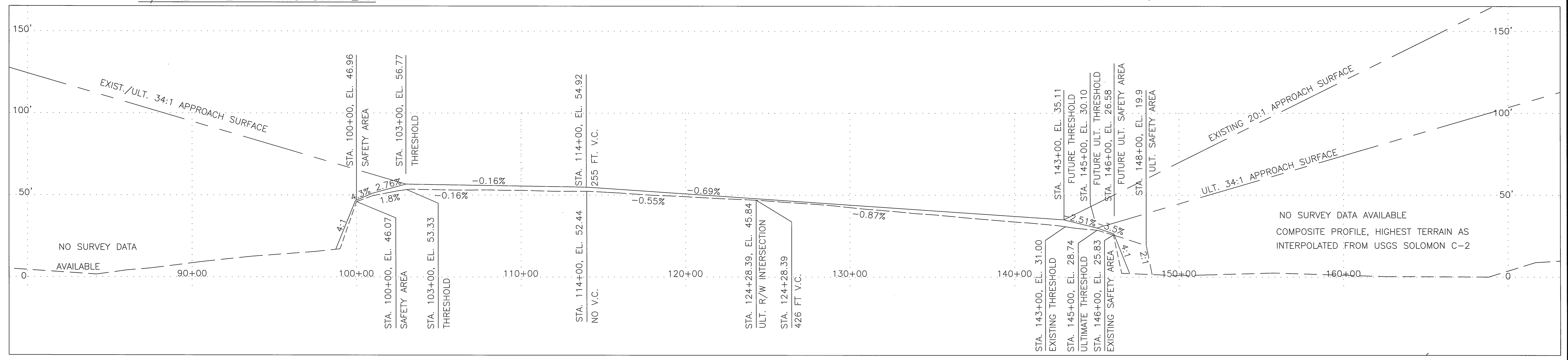
#	STRUCTURE NAME	TOP ELEV.	APPROACH SURFACE PENETRATION	PROPOSED DISPOSITION OF OBSTRUCTION
NO OBSTRUCTIONS				

OBSTRUCTION TABLE: R/W 20 APPROACH

#	STRUCTURE NAME	TOP ELEV.	APPROACH SURFACE PENETRATION	PROPOSED DISPOSITION OF OBSTRUCTION
NO OBSTRUCTIONS				



R/W 20 INNER APPROACH PLAN



RUNWAY 2/20 PROFILE

DESIGN_BTD	
DRAWN_BTD	
CHECKED_RJS	

BY	DATE	REVISIONS
	11/4/98	UPDATED PER PROJ. 65034.
		AIP 3-02-0106-03 AS-BUILTS & AC 150/5300-13, CHG 4&5

STATE OF ALASKA
DEPARTMENT OF TRANSPORTATION AND PUBLIC FACILITIES
NORTHERN REGION-DESIGN AND CONSTRUCTION-AVIATION

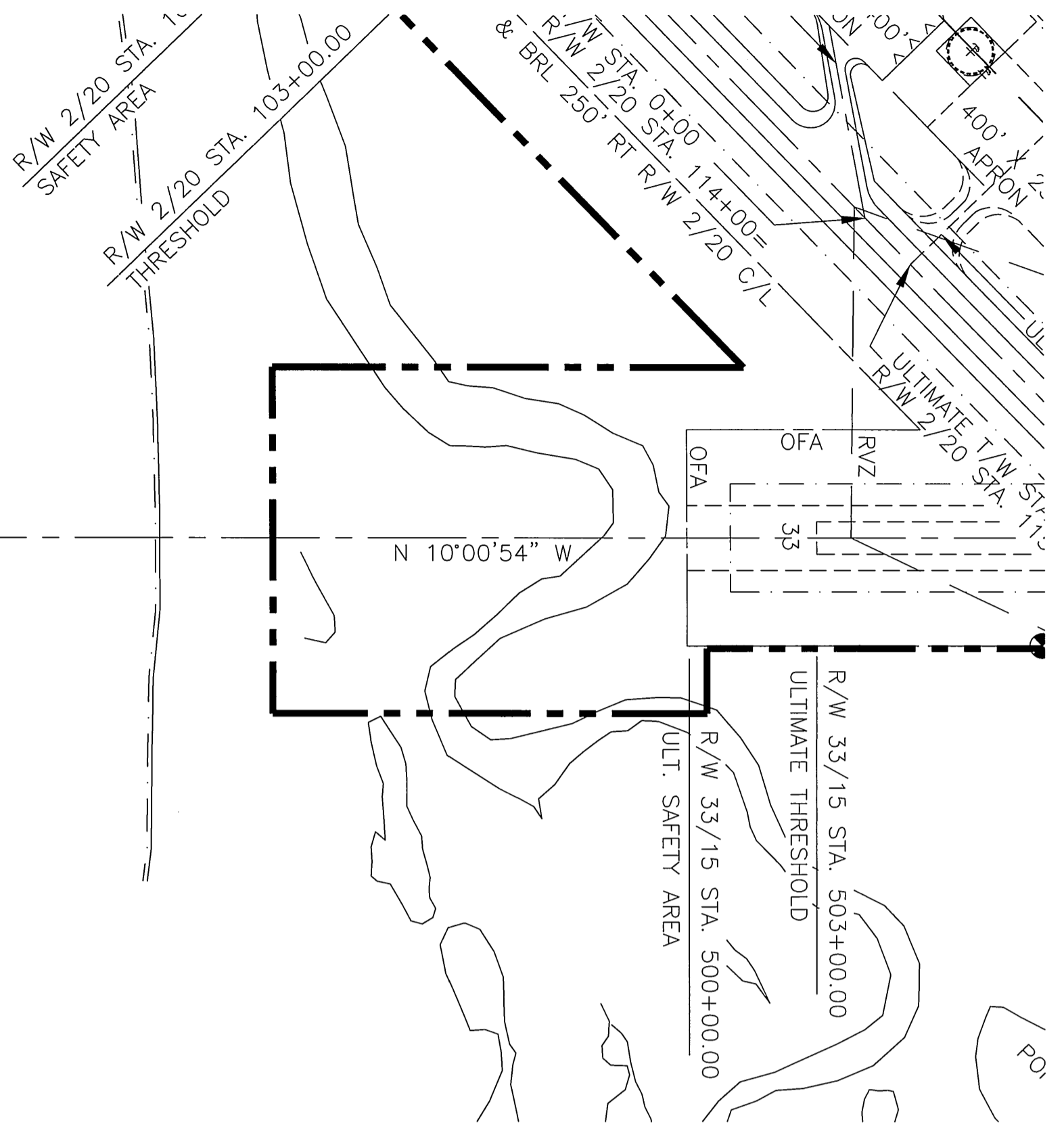
APPROVED: *Ryan F. Anderson*
RYAN F. ANDERSON, P.E. DATE: 5/11/2010
DESIGN GROUP CHIEF

AIRPORT LAYOUT PLAN APPROVED BY LETTER DATED: 6/17/10

Ryan F. Anderson
AIRPORTS DIVISION
ALASKAN REGION, AAL-601
AIRSPACE REVIEW 05AAL-181NRA

GOLOVIN AIRPORT
R/W 2/20 INNER PORTION
OF APPROACH SURFACES

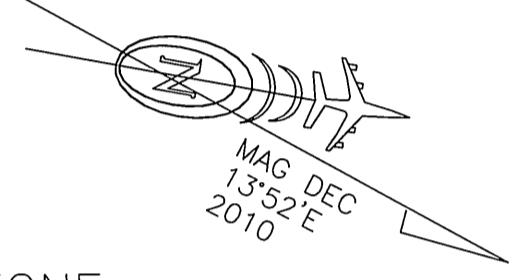
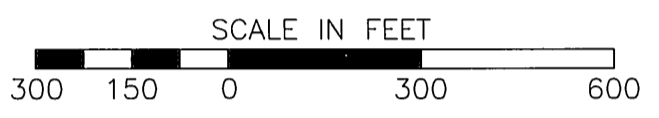
SHEET 2 OF 4



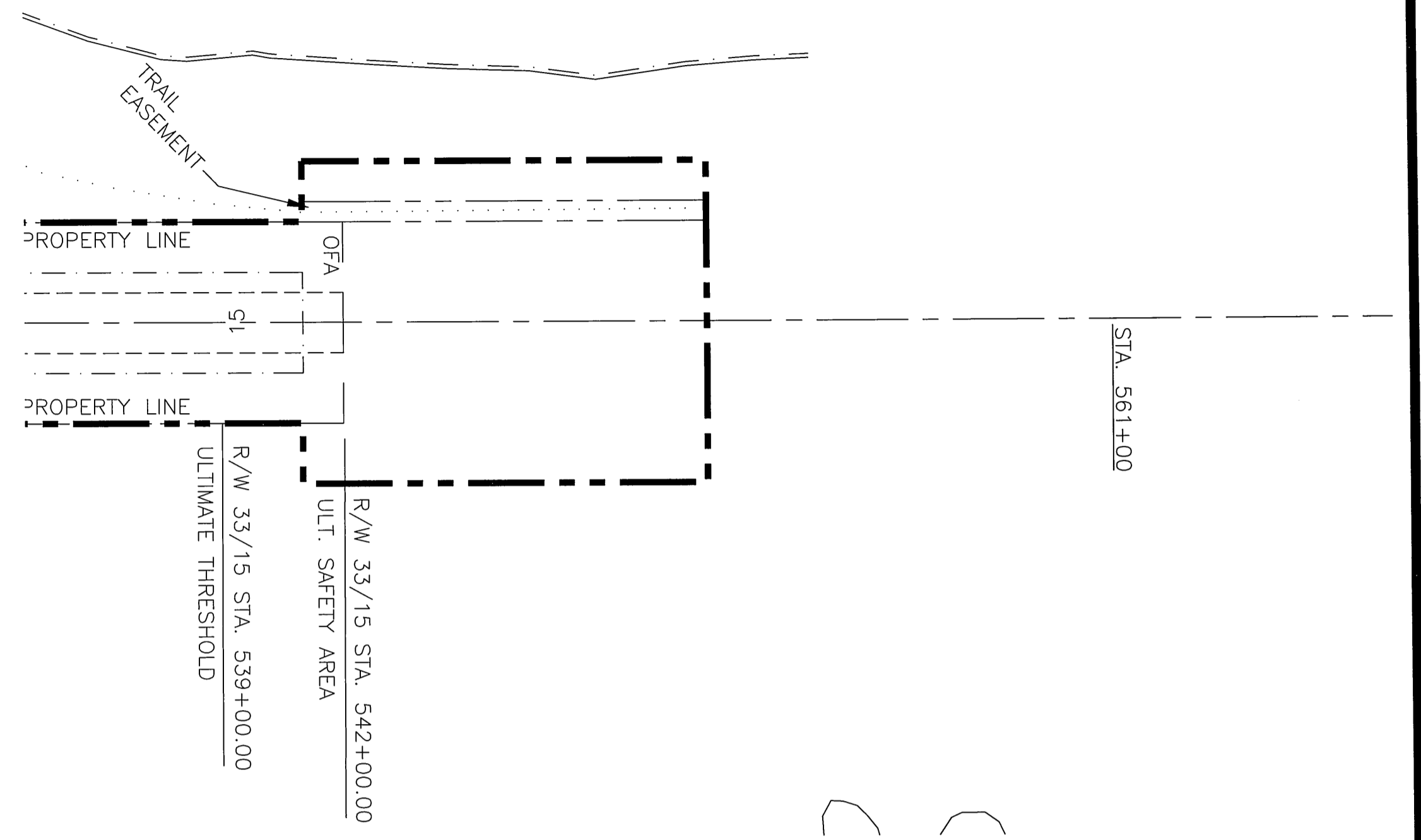
R/W 33 INNER APPROACH PLAN

OBSTRUCTION TABLE: R/W 15 APPROACH				
#	STRUCTURE NAME	TOP ELEV.	APPROACH SURFACE PENETRATION	PROPOSED DISPOSITION OF OBSTRUCTION
NO OBSTRUCTIONS				

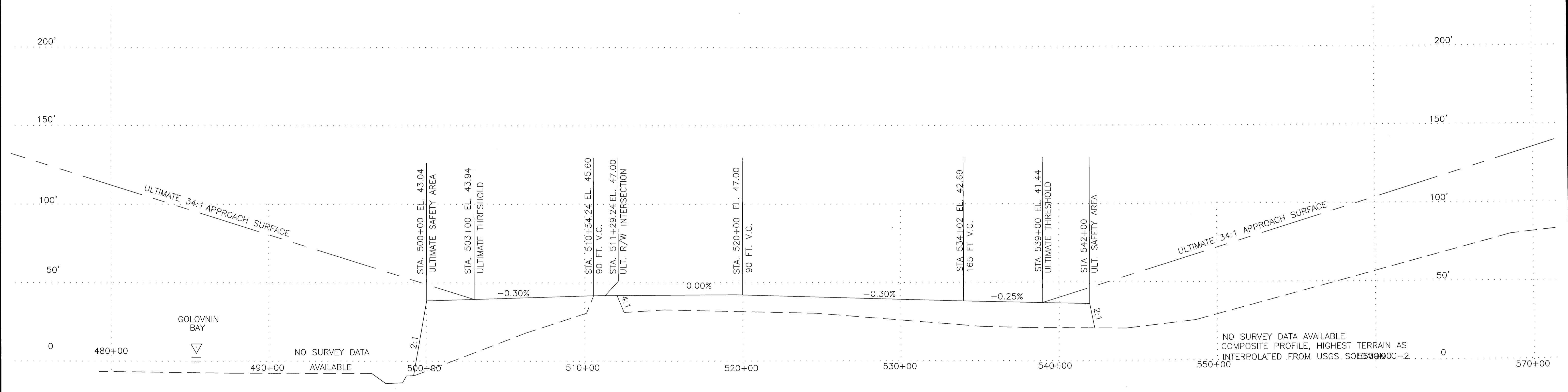
OBSTRUCTION TABLE: R/W 33 APPROACH				
#	STRUCTURE NAME	TOP ELEV.	APPROACH SURFACE PENETRATION	PROPOSED DISPOSITION OF OBSTRUCTION
NO OBSTRUCTIONS				



* RVZ = R/W VISIBILITY ZONE



R/W 15 INNER APPROACH PLAN



RUNWAY 33/15 PROFILE

DESIGN_BTD
DRAWN_BTD
CHECKED_RJS

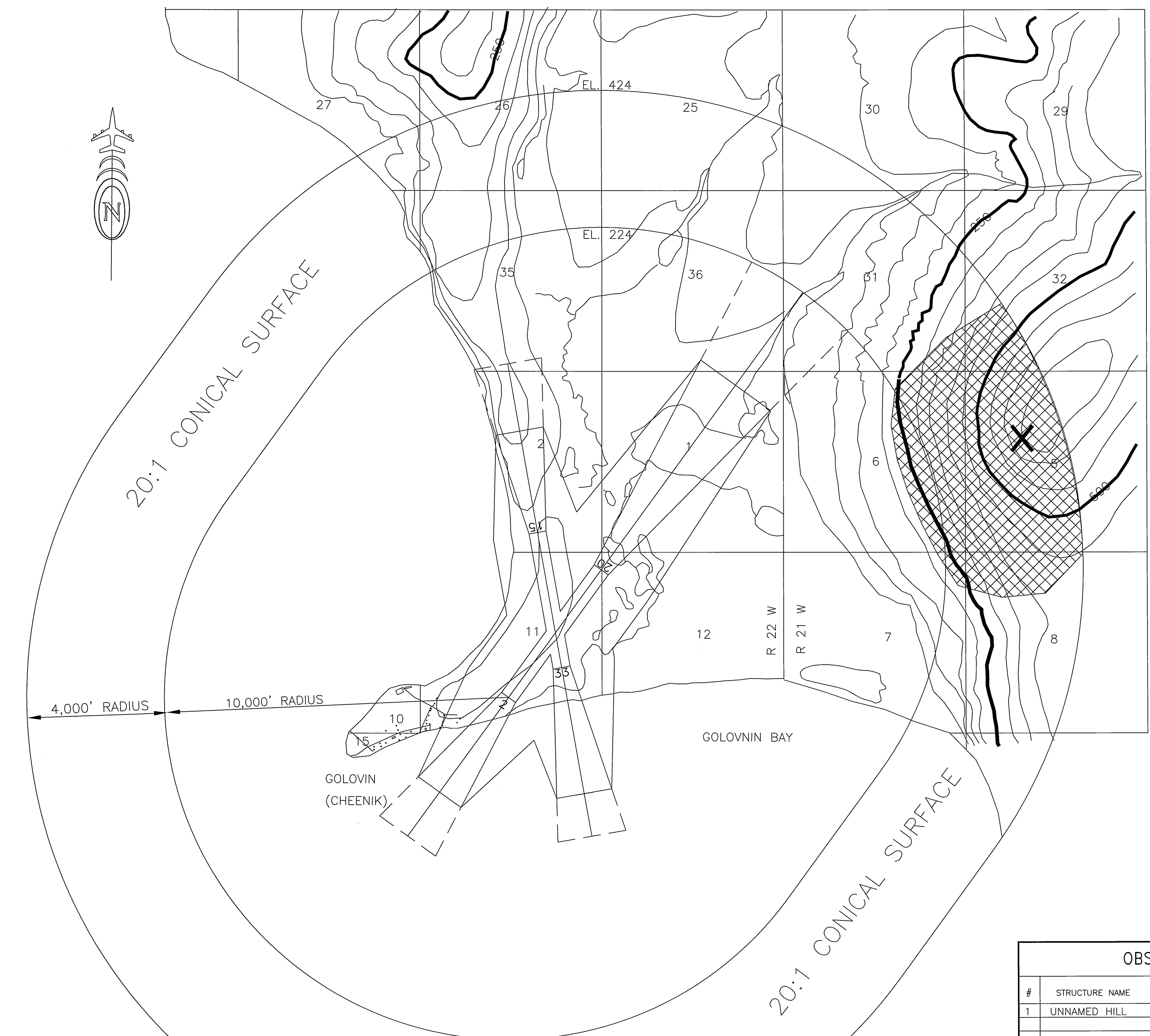
BY	DATE	REVISIONS
	11/6/98	UPDATED PER PROJECT 65034.
		AIP 3-02-0106-03 AS-BUILTS
		& AC 150/5300-13, CHG 4&5

STATE OF ALASKA
DEPARTMENT OF TRANSPORTATION AND PUBLIC FACILITIES
NORTHERN REGION-DESIGN AND CONSTRUCTION-AVIATION
APPROVED: *[Signature]* DATE: 5/11/2010
RYAN F. ANDERSON, P.E. DESIGN GROUP CHIEF

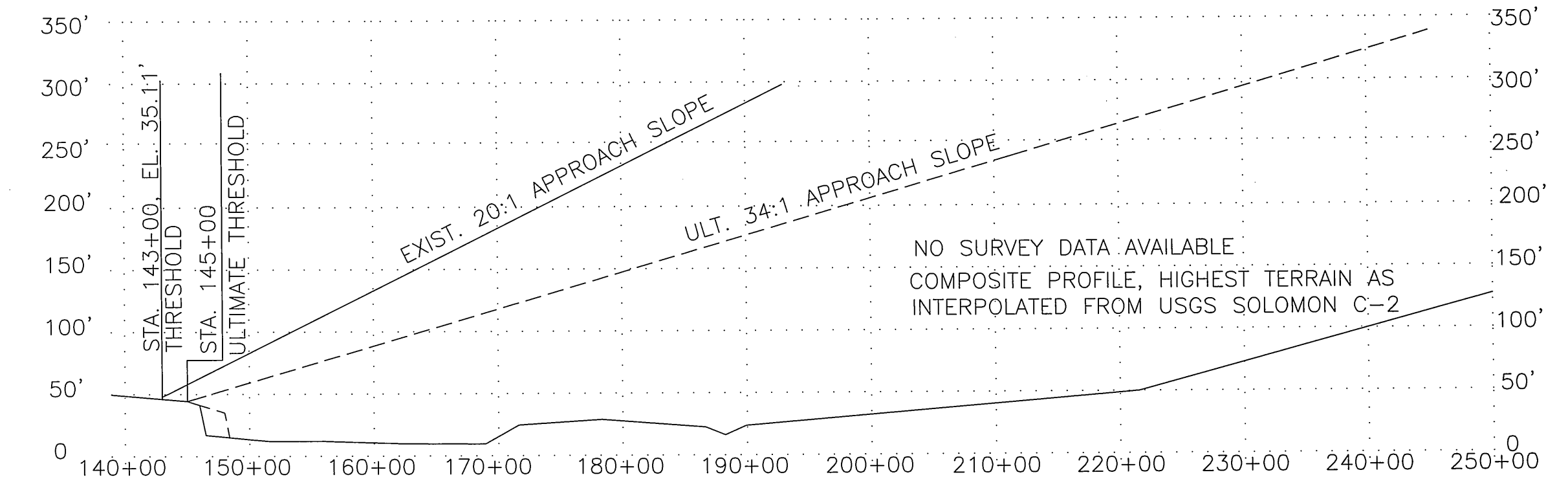
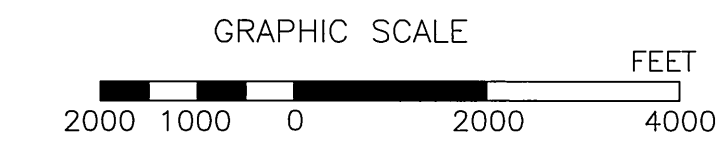
AIRPORT LAYOUT PLAN APPROVED
BY LETTER DATED: 6-17-10
[Signature]
AIRPORTS DIVISION
ALASKAN REGION, AAL-601
AIRSPACE REVIEW 05AAL-181NRA

GOLOVIN AIRPORT
R/W 15/33 INNER PORTION
OF APPROACH SURFACES

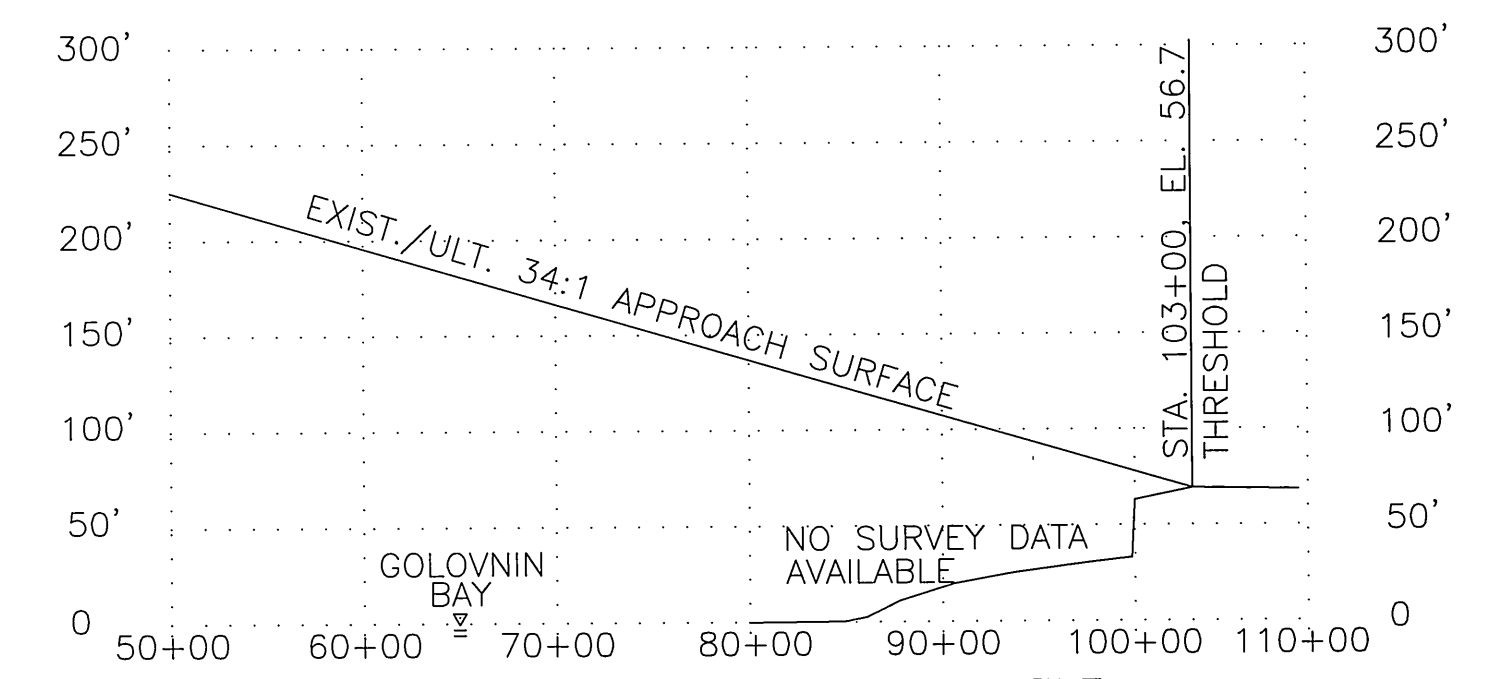
SHEET 3 OF 4



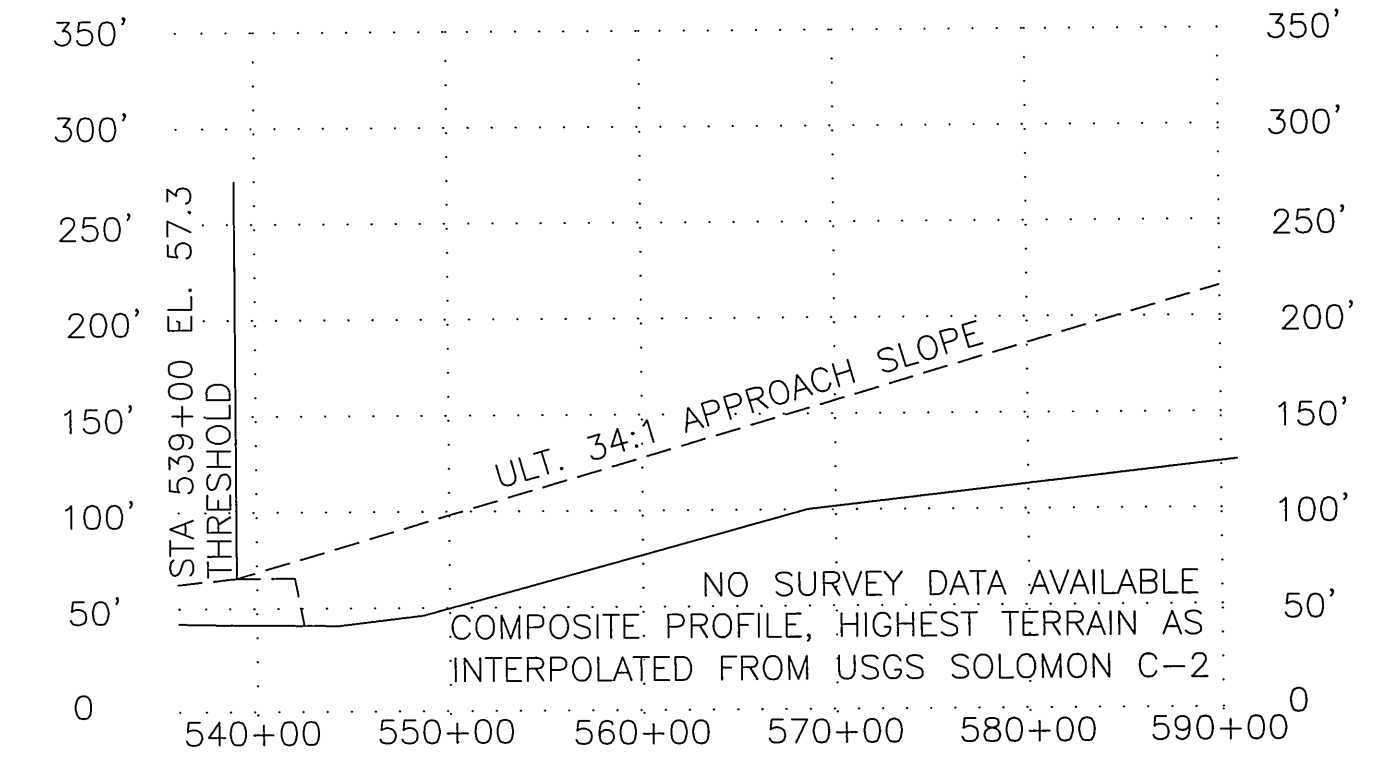
AIRSPACE MAP
 SEC 11, T 11 S, R 22 W
 KRM, USGS SOLOMON (C-2 & 3)
 MAXIMUM AIRSPACE PENETRATION: 254 FEET
 X = POINT OF MAXIMUM PENETRATION



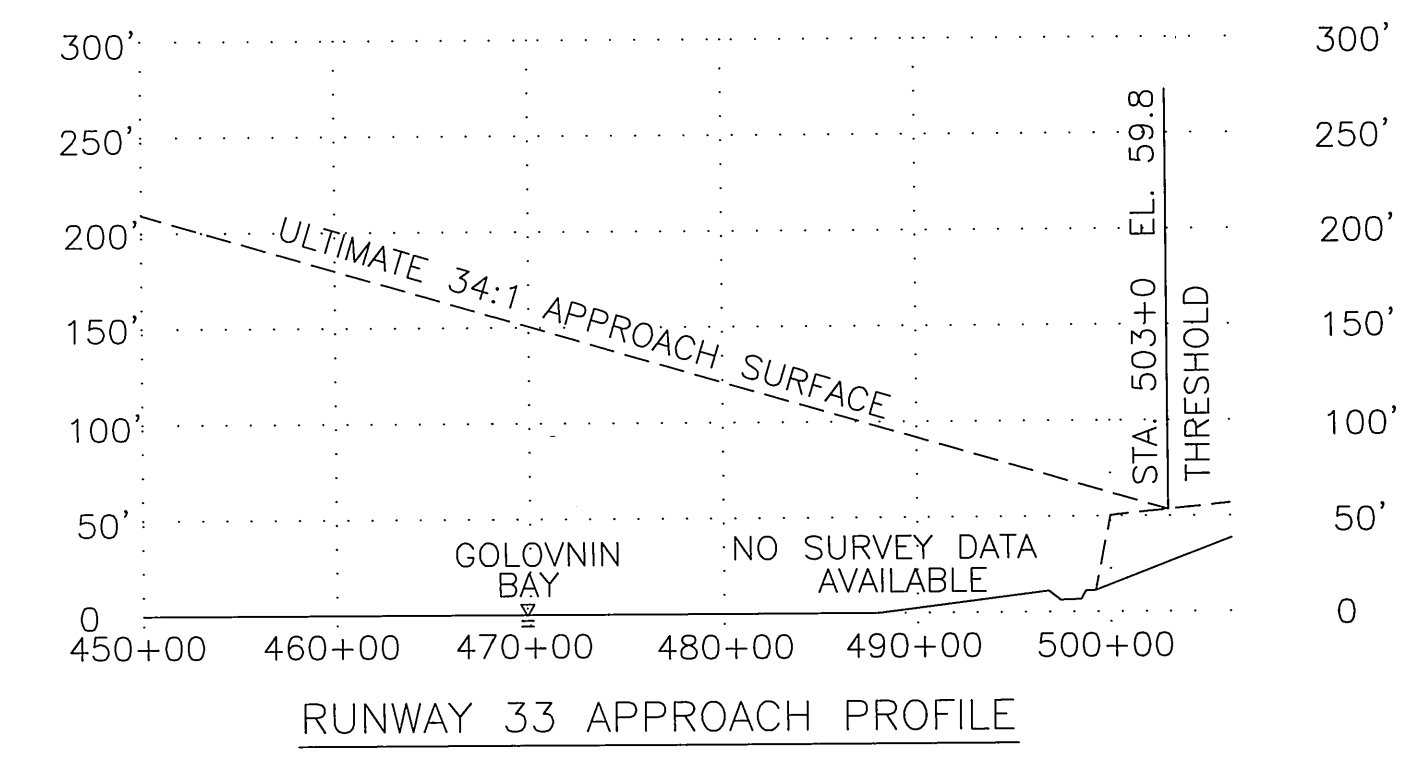
RUNWAY 20 APPROACH PROFILE



RUNWAY 2 APPROACH PROFILE



RUNWAY 15 APPROACH PROFILE



RUNWAY 33 APPROACH PROFILE

OBSTRUCTION TABLE: R/W 33 APPROACH				
#	STRUCTURE NAME	TOP ELEV.	FAR PART 77 SURFACE PENETRATION	PROPOSED DISPOSITION OF OBSTRUCTION
1	UNNAMED HILL	650'	270'	NONE

DESIGN BTD
 DRAWN BTD
 CHECKED RJS

BY	DATE	REVISIONS
	11/6/98	UPDATED PER PROJ. 65034.
		AIP 3-02-0106-03 AS-BUILTS
		& AC 150/5300-13, CHG 4&5

STATE OF ALASKA
 DEPARTMENT OF TRANSPORTATION AND PUBLIC FACILITIES
 NORTHERN REGION-DESIGN AND CONSTRUCTION-AVIATION
 APPROVED [Signature] DATE 5/11/2010
 RYAN F. ANDERSON, P.E. DESIGN GROUP CHIEF

AIRPORT LAYOUT PLAN APPROVED
 BY LETTER DATED: 6-17-10
[Signature]
 AIRPORTS DIVISION
 ALASKAN REGION, AAL-601
 AIRSPACE REVIEW 05AAL-181NRA

GOLOVIN AIRPORT
 AIRSPACE

SHEET
 4 OF
 4