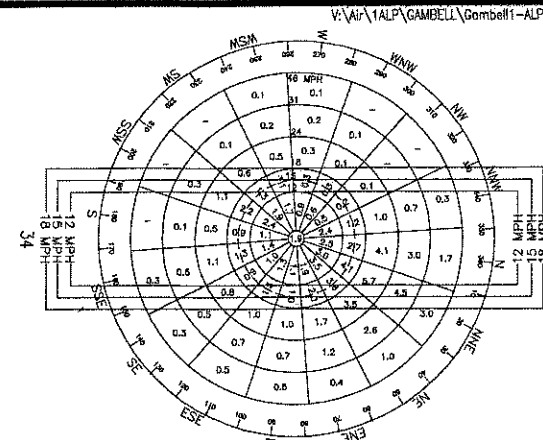


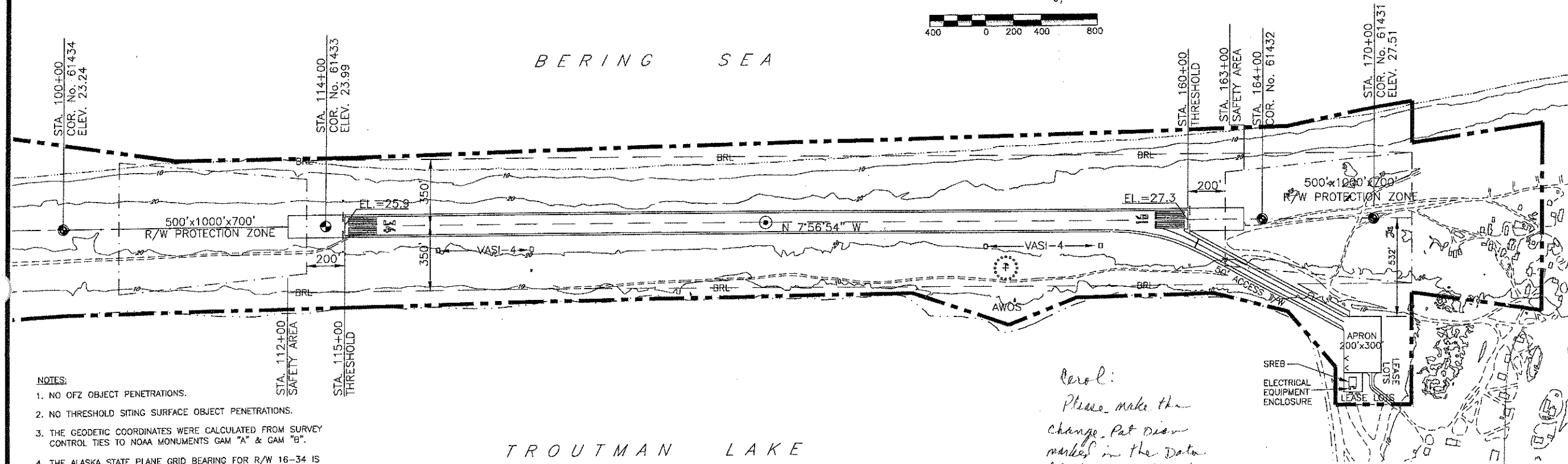
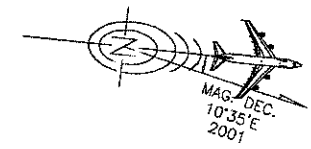
NOTES

1. SURFACE WIND DATA TAKEN FROM UNIVERSITY OF ALASKA CLIMATE CENTER FROM JULY 1949 TO NOV. 1988.
2. OPTIMUM COVERAGE AT N20'E.



WINDROSE

- 12 M.P.H. COVERAGE = 66.7%
- 15 M.P.H. COVERAGE = 75.1%
- 18 M.P.H. COVERAGE = 83.1%



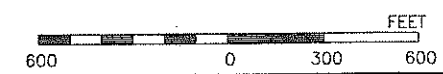
- NOTES:
1. NO OFZ OBJECT PENETRATIONS.
 2. NO THRESHOLD SITING SURFACE OBJECT PENETRATIONS.
 3. THE GEODETIC COORDINATES WERE CALCULATED FROM SURVEY CONTROL TIES TO NOAA MONUMENTS GAM "A" & GAM "B".
 4. THE ALASKA STATE PLANE GRID BEARING FOR R/W 16-34 IS N 6°23'38" W.
 5. DATA BASE CONTROL YEAR: NAD 83.

Carol:
 Please make the change. Put down marked in the data block. (changed 2 1/2 mi to 1 mi) on the map & electronically. Add approved data. Note 1/2 signs & distribute.
 Th
 C

AIRPORT DATA		
	EXISTING	ULTIMATE
AIRPORT ELEVATION (MSL)	27.8'	SAME
AIRPORT REFERENCE CODE	BH	SAME
MEAN DAILY MAX. TEMP. HOTTEST MONTH (JULY)	44.5°F	SAME
TAXIWAY LIGHTING	MIL	SAME
RAMP LIGHTING	NONE	SAME
NAVIGATION AIDS	BEACON, NDB	SAME
COMMUNICATION AIDS	NONE	SAME
AIRPORT REFERENCE POINT (ARP)	LAT. 63°45'59.81"N LONG. 171°43'58.05"W	
THRESHOLD 34 STA. 115+00	LAT. 63°46'37.88"N LONG. 171°43'51.13"W	SAME
THRESHOLD 16 STA. 160+00	LAT. 63°46'21.75"N LONG. 171°44'04.97"W	SAME

RUNWAY DATA		
	EXISTING	ULTIMATE
% WIND COVERAGE	12 M.P.H. = 66.7% 15 M.P.H. = 75.1% 18 M.P.H. = 83.1%	
INSTRUMENT RUNWAY	16-34	SAME
RUNWAY SURFACE TYPE	ASPHALT	SAME
PAVEMENT STRENGTH	S22	SAME
APPROACH VISIBILITY MINIMUM	≥1 MILE	≥1 MILE
RUNWAY LIGHTING	MIRL	SAME
RUNWAY MARKING	VISUAL	SAME
VISUAL APPROACH AIDS	VASI-4	SAME
R/W DIMENSIONS	4500'x100'	SAME
R/W SAFETY AREA	5100'x150'	SAME
R/W OBJECT FREE AREA (ROFA)	5100'x500'	SAME
R/W OBSTACLE FREE ZONE (ROFZ)	5500'x400'	SAME
T/W WIDTH	50'	SAME
T/W SAFETY AREA WIDTH	80'	SAME
T/W OFA	131'	SAME

LEGEND		
	EXISTING	ULTIMATE
PROPERTY LINE		
BUILDING RESTRICTION LINE (B.R.L.)	BRL	BRL
DEVELOPMENT		
WIND CONE & SEGMENTED CIRCLE		
CONCRETE SURVEY MONUMENT		
BUILDINGS		
ROADWAYS		
THRESHOLD LIGHTS		
FENCING		
AIRPORT REFERENCE POINT		
ROTATING BEACON		
AWOS		
VASI		
SHORELINE/WATERLINE		
TRAILS		
TREELINE		
CONTOURS		



DESIGN	CEC
DRAWN	CAT
CHECKED	PKS
BY	DATE
REVISIONS	

STATE OF ALASKA
 DEPARTMENT OF TRANSPORTATION AND PUBLIC FACILITIES
 NORTHERN REGION - DESIGN AND ENGINEERING SERVICES

APPROVED *Patricia D. Miller* DATE *9/14/01*
 PATRICIA D. MILLER, P.E. DESIGN GROUP CHIEF

AIRPORT LAYOUT PLAN APPROVED
 BY LETTER DATED: *11-7-01*
David Stelling
 AIRPORTS DIVISION,
 ALASKAN REGION, AAL-620
 AIRSPACE REVIEW #97AAL-049NRA

THIS ALP WAS PREPARED FROM THE AS BUILTS FOR PROJECT AIP 3-02-01103-03/64829 DATED 4/24/00.
 THIS ALP SUPERCEDES THE ALP DATED 8/24/78 AND REVISED 03/30/84.

GAMBELL AIRPORT
 AIRPORT LAYOUT PLAN

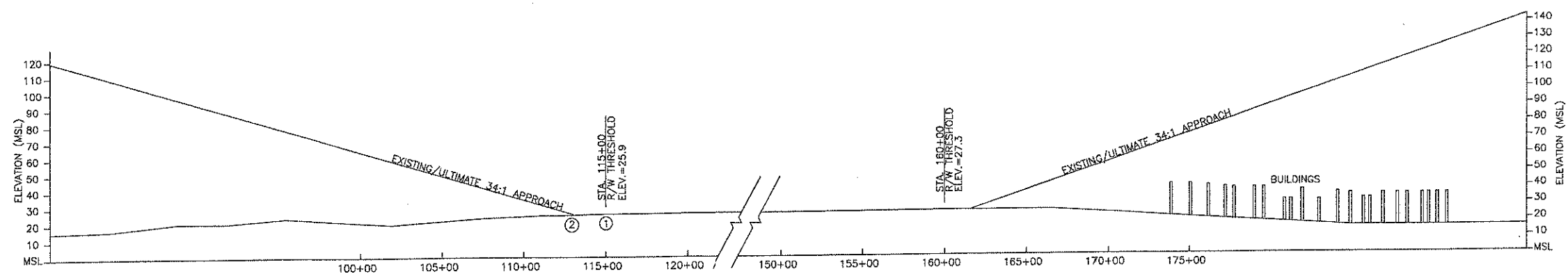
R/W 34 PROTECTION ZONE OBSTRUCTION TABLE

OBSTRUCTION NO.	DESCRIPTION	ELEVATION (MSL)	PENETRATION	RECOMMENDATION
①	TRAIL	19.3	NONE	NONE
②	TRAIL	18.0	NONE	NONE

R/W 16 APPROACH PLAN

R/W 16 PROTECTION ZONE OBSTRUCTION TABLE

OBSTRUCTION NO.	DESCRIPTION	ELEVATION (MSL)	PENETRATION	RECOMMENDATION
③	TRAIL	17.0	NONE	NONE



RUNWAY 16-34 PROTECTION ZONE PROFILE

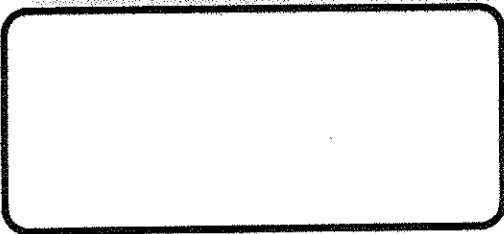
DESIGN CEC
 DRAWN CAT
 CHECKED PKS

BY	DATE	REVISIONS

STATE OF ALASKA
 DEPARTMENT OF TRANSPORTATION AND PUBLIC FACILITIES
 NORTHERN REGION - DESIGN AND ENGINEERING SERVICES

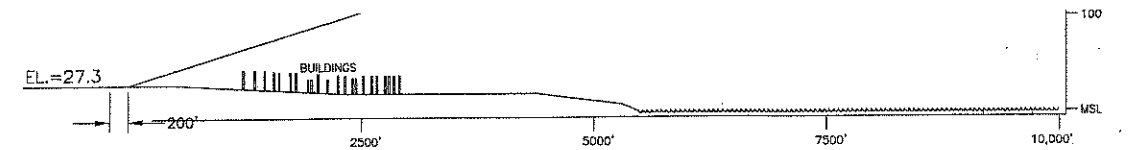
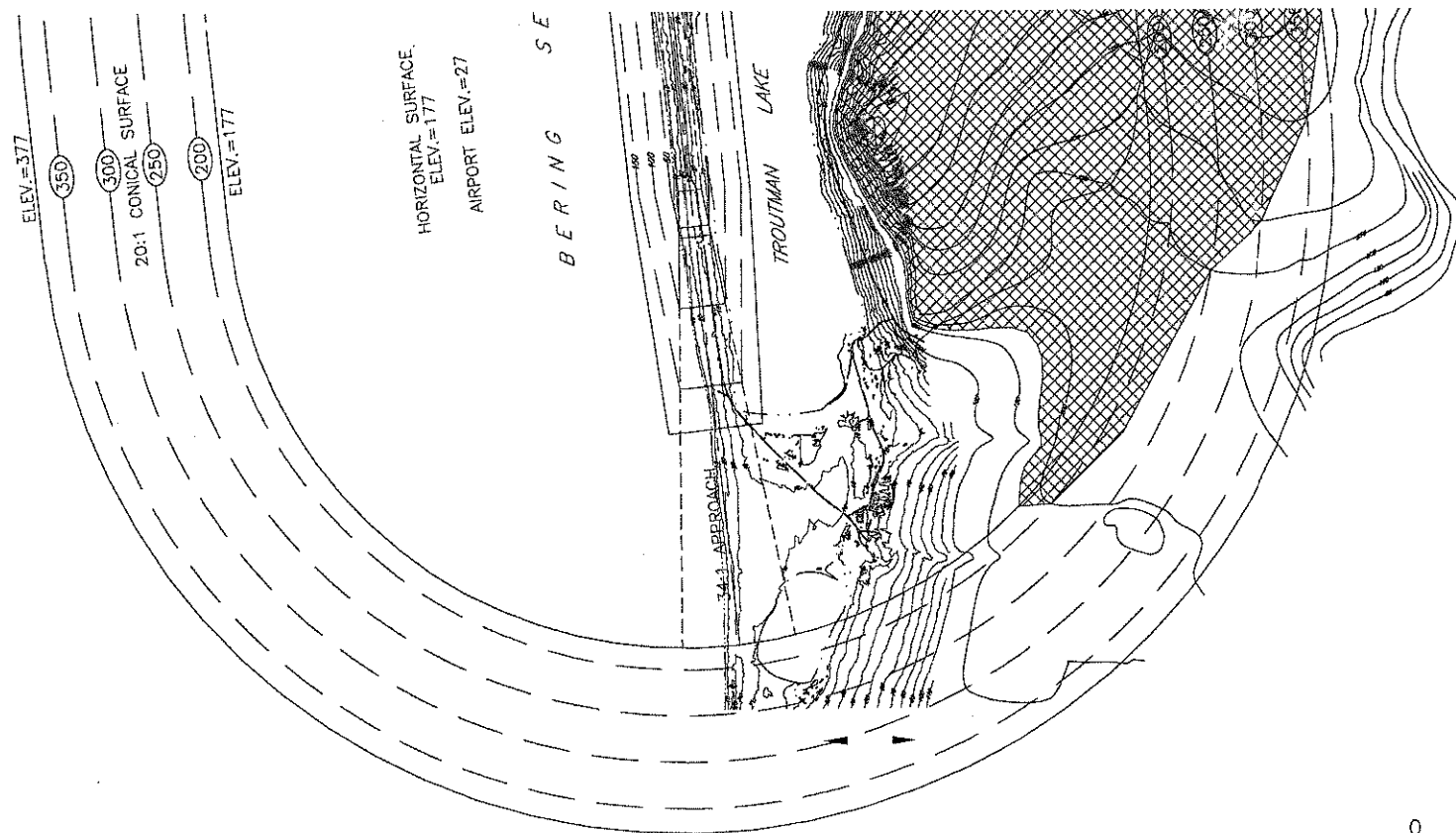
APPROVED: *Pat & Miller* DATE: 9/14/01
 PATRICIA D. MILLER, P.E. DESIGN GROUP CHIEF

AIRPORT LAYOUT PLAN APPROVED
 BY LETTER DATED: 11-07-01
David Stelling
 AIRPORTS DIVISION,
 ALASKAN REGION, AAL-620
 AIRSPACE REVIEW #97AAL-049NRA



GAMBELL AIRPORT
 INNER PORTION OF APPROACH
 SURFACES PLAN & PROFILE

SHEET 2 OF 3

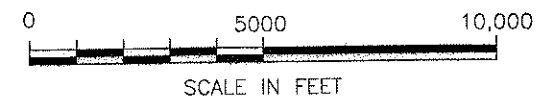


RUNWAY 16 APPROACH ZONE PROFILE



FAR PART 77 PENETRATION

OBSTRUCTION TABLE			
DESCRIPTION	ELEVATION (MSL)	OBSTRUCTION	RECOMMENDATION
△	177'+	TERRAIN PENETRATION	WAIVER



DESIGN CEC

DRAWN CAT

CHECKED PKS

BY	DATE	REVISIONS

STATE OF ALASKA
DEPARTMENT OF TRANSPORTATION AND PUBLIC FACILITIES
NORTHERN REGION - DESIGN AND ENGINEERING SERVICES

APPROVED *Patricia D. Miller* DATE 9/14/01
PATRICIA D. MILLER, P.E. DESIGN GROUP CHIEF

AIRPORT LAYOUT PLAN APPROVED
BY LETTER DATED: 11-07-01
David Steding
AIRPORTS DIVISION,
ALASKAN REGION, AAL-620
AIRSPACE REVIEW #97AAL-049NRA

GAMBELL AIRPORT
AIRSPACE AND
COMPOSITE APPROACH PROFILES

SHEET
3
OF
3