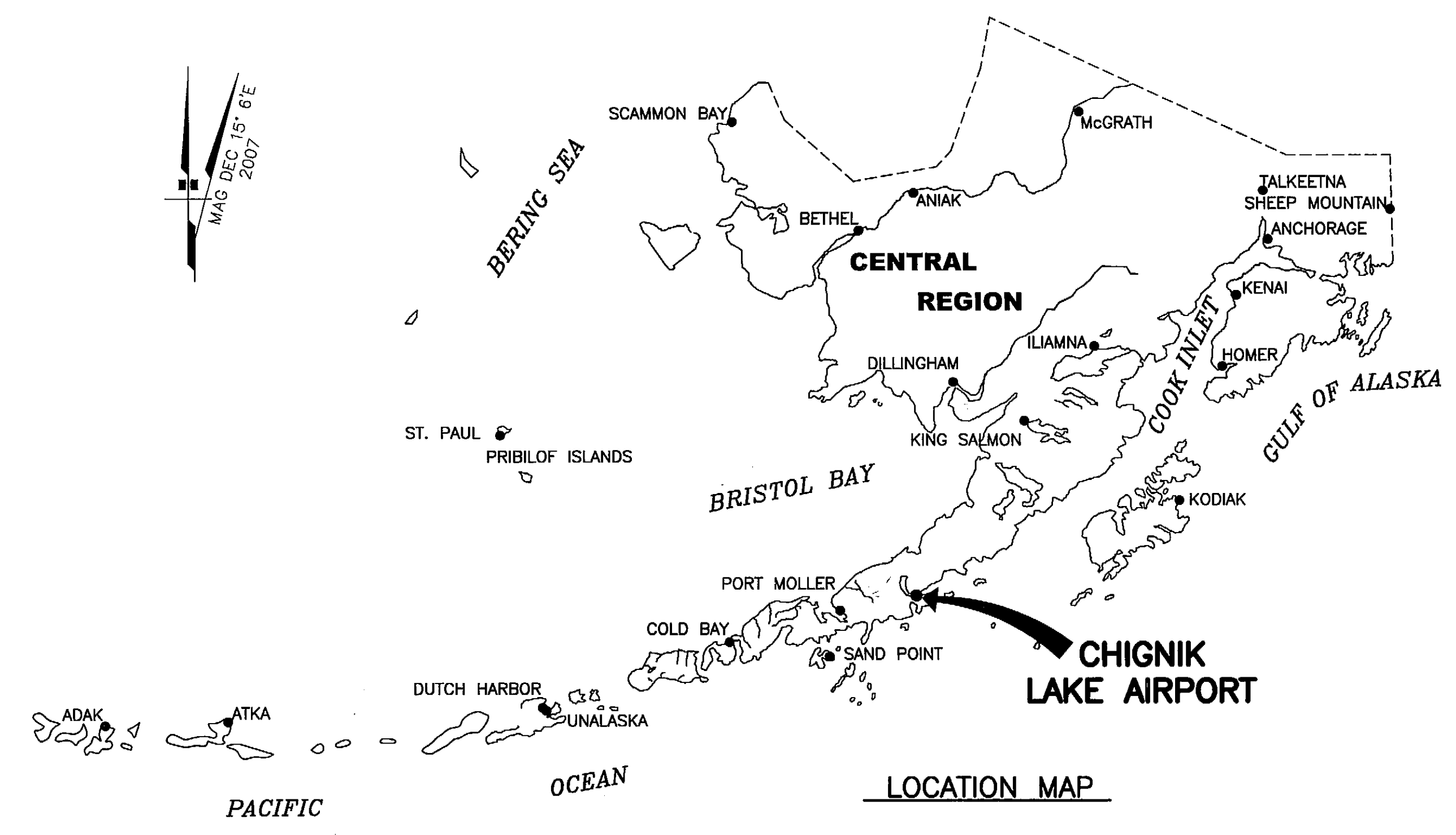


FILE No.: 232-53-1  
 Date Plotted: 1/23/2008, 9:11 AM  
 Layout Name: DATA  
 File Name: F:\Projects\059422\059422D\Chignik Lake\ALP\ALP-CHIGNIK-LAKE-DATA.dwg  
 Designed By: nilewelln  
 Drawn By: rmbaiger  
 Checked By: bhanson



LEGEND		
ITEM	EXISTING	ULTIMATE
AIRPORT REFERENCE POINT (A.R.P.)		
ANTENNA		
BLUFF		
BUILDINGS		
BUILDING RESTRICTION LINE		
FENCE		
PAPI		
PROPERTY LINE		
REIL		
ROADWAYS		
ROTATING BEACON		
SHORELINE		
SURVEY MONUMENT		
THRESHOLD MARKERS/LIGHTS		
TOPOGRAPHIC CONTOURS		
TREE (LARGE SINGLE)		
TREELINE		
VASI		
WIND CONE		
WIND CONE AND SEGMENTED CIRCLE		

AIRPORT DATA TABLE		
ITEM	EXISTING	ULTIMATE
ICAO IDENTIFIER	NONE	NONE
NATIONAL AIRPORT IDENTIFIER	A79	A79
FAA SITE NUMBER	50097.54*A	50097.54*A
AIRPORT ELEVATION NAVD88 (ESTIMATED)	44'	44'
AIRPORT REFERENCE CODE	A-1	A-1
MEAN MAX. TEMPERATURE, HOTTEST MONTH	59°F, AUGUST	59°F, AUGUST
AIRPORT AND TERMINAL NAVIGATION AIDS	NONE	NONE
TAXIWAY LIGHTING/MARKING	NONE	NONE
OBSTRUCTION SURVEY SOURCE & TYPE	NONE	NONE
MAGNETIC DECLINATION, YEAR, RATE OF CHANGE	15°32'E, 2005, -0°11'(W) / YEAR 14°37'E, 2010, -0°11'(W) / YEAR	

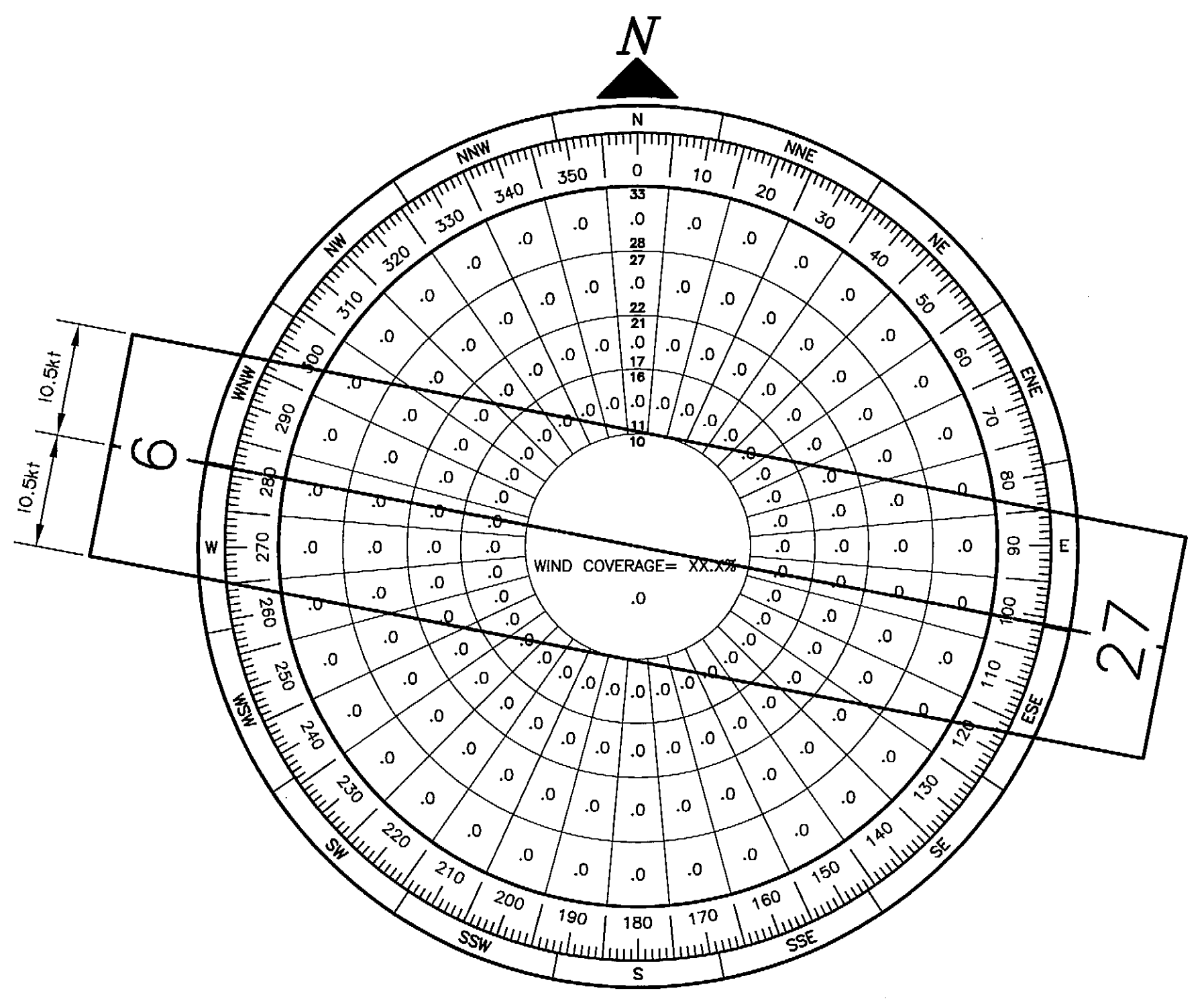
GEOGRAPHIC COORDINATES TABLE				
ITEM	EXISTING LATITUDE	EXISTING LONGITUDE	ULTIMATE LATITUDE	ULTIMATE LONGITUDE
ARP	56°15'19.64"N	158°46'40.19"W	56°15'19.64"N	158°46'40.19"W
THRESHOLD RW 9	56°15'22.24"N	158°47'04.54"W	56°15'22.24"N	158°47'04.54"W
THRESHOLD RW 27	56°15'17.05"N	158°46'15.85"W	56°15'17.05"N	158°46'15.85"W

RUNWAY 9/27 DATA TABLE			
ITEM	EXISTING	NEAR-TERM	ULTIMATE
RUNWAY TYPE	UTILITY OR OTHER THAN UTILITY	UTILITY	
FAR PART 77 APPROACH CATEGORY (V, NPI, P)	V/V		
APPROACH SURFACES	20:1 / 20:1		
VISIBILITY MINIMUM	≥1 SM		
RUNWAY SURFACE	GRAVEL		
PAVEMENT STRENGTH SW,DW,DTW,DDTW x1000lbs	N/A		
AIRCRAFT APPROACH CATEGORY	A		
AIRPLANE DESIGN GROUP	I		
TRUE BEARING	N79°09'54"W		
EFFECTIVE GRADE	0.29%		
TOUCHDOWN ELEVATION NAVD88 (ESTIMATED)	44'		
RUNWAY DIMENSIONS	60' x 2800'		
RUNWAY SAFETY AREA (RSA) DIMENSIONS	120' x 3280'		
LENGTH BEYOND R/W END	240' / 240'		
RUNWAY PROTECTION ZONE (RPZ) DIMENSIONS	250' x 450' x 1000'		
RUNWAY OBJECT FREE AREA (ROFA) DIMENSIONS	250' x 3280'		
LENGTH BEYOND R/W END OR STOPWAY	240' / 240'		
RUNWAY OBSTACLE FREE ZONE (ROFZ) DIMENSIONS	250' x 3200'		
RUNWAY LIGHTING	NONE		
RUNWAY MARKING TYPE	NONE		
RUNWAY VISUAL APPROACH AIDS	NONE		

SAME AS EXISTING

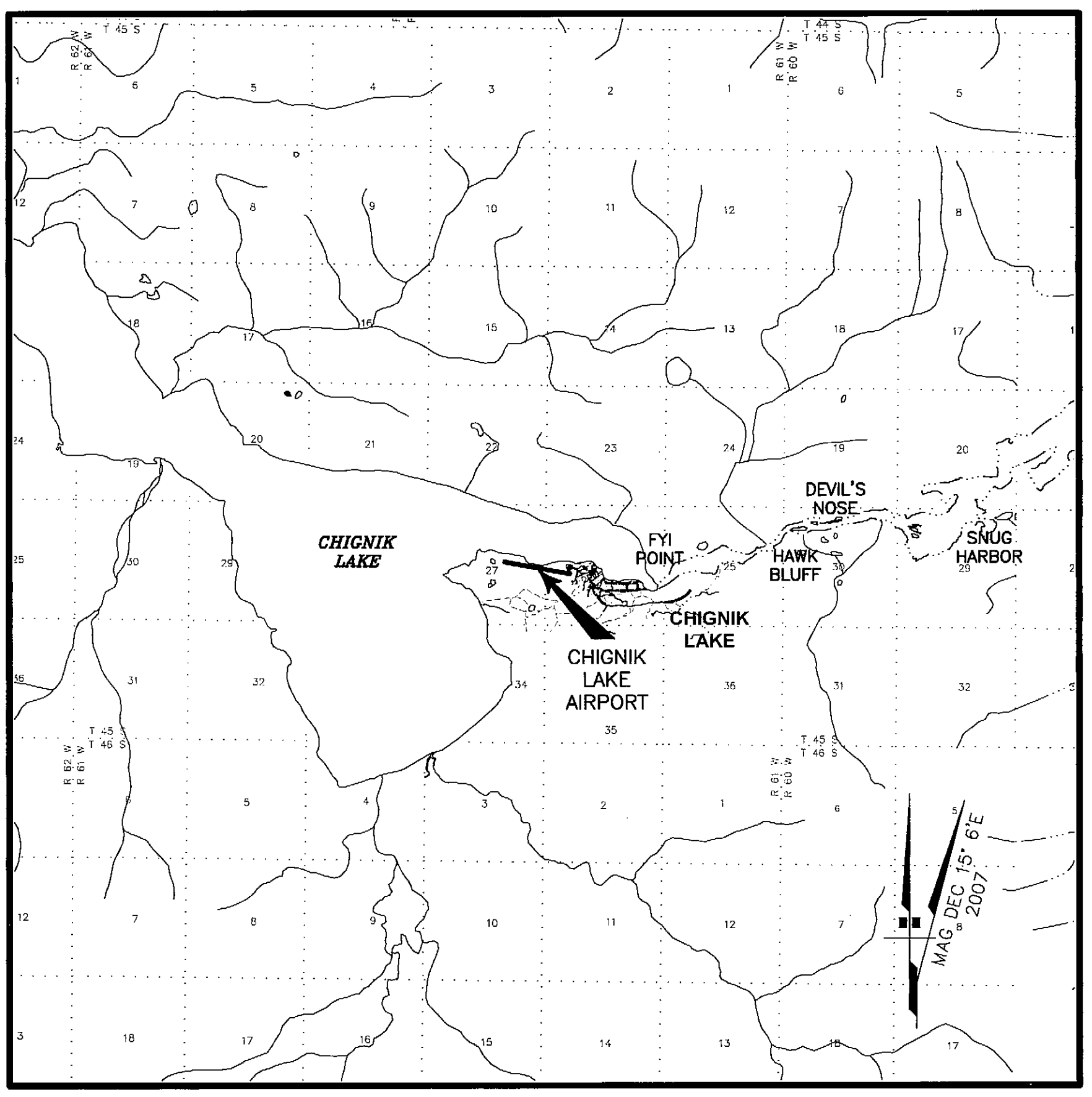
**NOTES**

- NAVD88 ELEVATIONS WERE DEVELOPED AT THE SITE BY STATIC GPS OBSERVATIONS WITH OPUS DERIVED ELLIPSOID HEIGHTS ADJUSTED BY GEOID2006 GEOID HEIGHTS.
- RUNWAY NUMBERS CHANGED FROM 8/26 TO 9/27 DUE TO CHANGES IN MAGNETIC DECLINATION.



WIND DATA TABLE				
RUNWAY	10.5 kt	13 kt	16 kt	20 kt
9/27				

\* WIND DATA NOT AVAILABLE.



VICINITY MAP  
 PROTRACTED T 45 S, R 61 W, SEC. 26 & 27  
 SEWARD MERIDIAN  
 U.S.G.S. CHIGNIK (B-3), ALASKA

MODIFICATION TO STANDARDS/ NON STANDARD CONDITIONS			
DESCRIPTION	STANDARD	EXISTING	ULTIMATE

DRAWING INDEX	
SHT #	TITLE
1	AIRPORT DATA SHEET
2	AIRPORT LAYOUT PLAN
3	AIRPORT AIRSPACE

BY	DATE	REVISION
APPROVED:	DATE: 1-30-2008	
<i>Robert A. Campbell</i>		
ROBERT A. CAMPBELL, P.E.	PRECONSTRUCTION ENGINEER	
RECOMMENDED:	DATE: 1-30-2008	
<i>Harvey M. Douthitt</i>		
HARVEY M. DOUTHITT, P.E.	DESIGN SECTION CHIEF	

STATE OF ALASKA DEPARTMENT OF TRANSPORTATION AND PUBLIC FACILITIES CENTRAL REGION	
CHIGNIK LAKE AIRPORT CHIGNIK LAKE, ALASKA AIRPORT LAYOUT PLAN AIRPORT DATA SHEET	DATE: 10/25/2007 SHEET: 1 OF 3

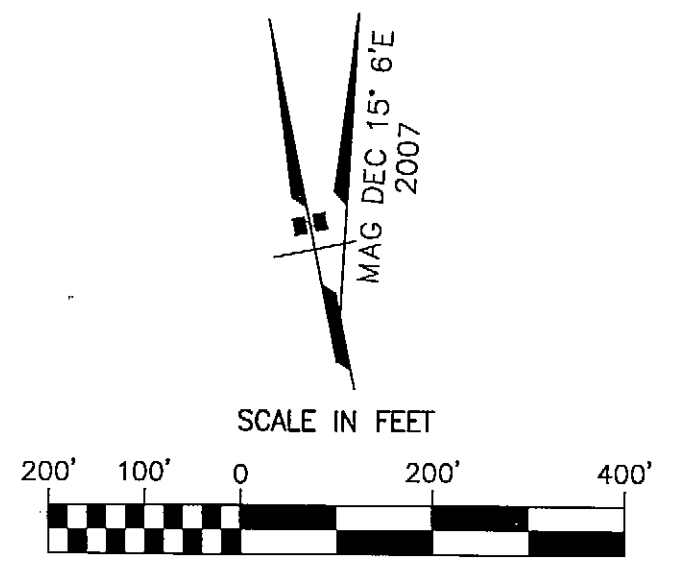
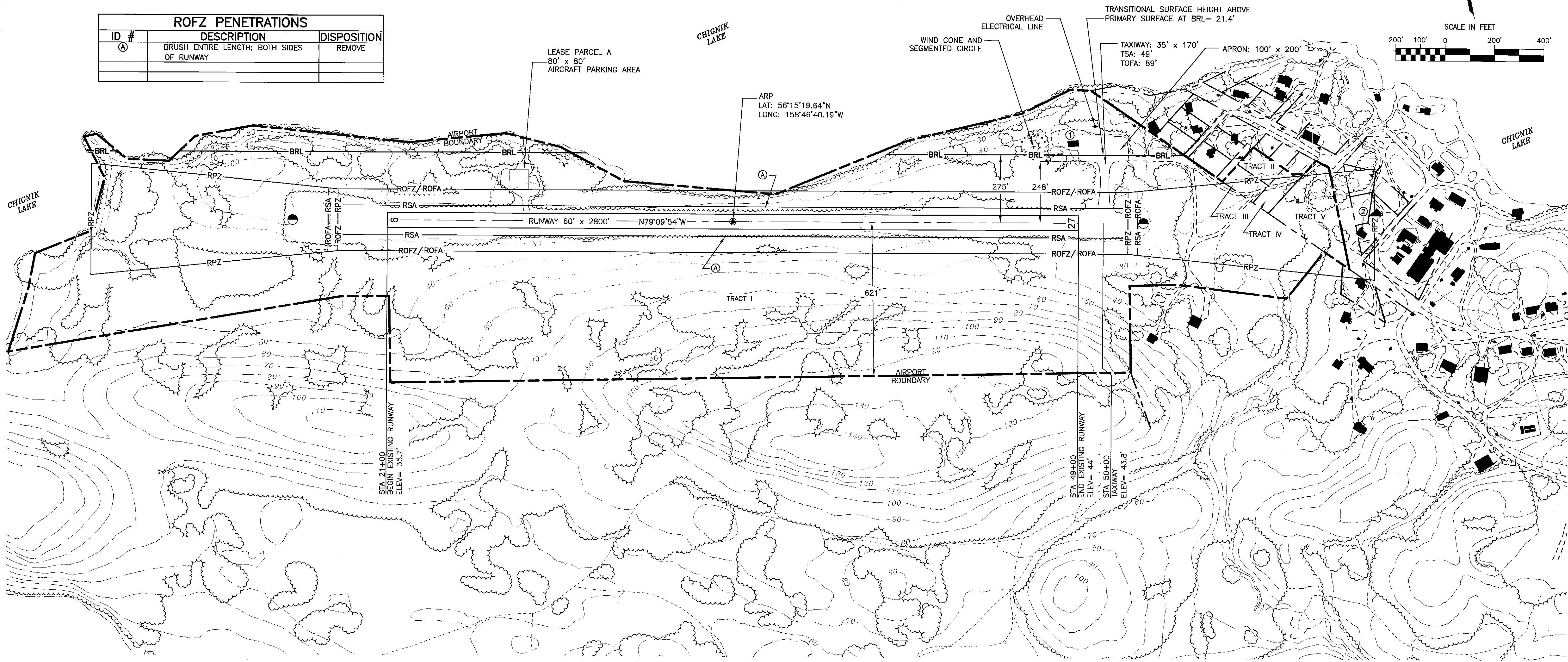
AIRPORT LAYOUT PLAN CONDITIONAL APPROVAL SUBJECT TO ALP APPROVAL LETTER DATED 3/10/08  
 FAA AIRSPACE REVIEW NUMBER: 2007-AAL-218-NRA  
 DATE: 3/10/08  
 FAA, AIRPORTS DIVISION ALASKAN REGION, AAL-621

FILE No.: 232-53-2

Date Plotted: 1/22/2008, 4:53 PM  
 Layout Name: P:\Projects\059422\059422D (Chignik Lake)\ALP-ALP-CHIGNIK LAKE.dwg  
 File Name:  
 Designed By: nlewallin  
 Drawn By: mbauler  
 Checked By: branson

BUILDING DATA TABLE				
ID #	DESCRIPTION	STATION/OFFSET	TOP ELEV (NAVD88)	OBSTRUCT MARKING
①	DOT&PF SREB	48+77/311' LT	59' EST	NONE
②	BUILDING	60+33/26' RT	43' EST	NONE

ROFZ PENETRATIONS		
ID #	DESCRIPTION	DISPOSITION
Ⓐ	BRUSH ENTIRE LENGTH; BOTH SIDES OF RUNWAY	REMOVE



PROPERTY STATUS							
ID #	INTEREST	GRANTOR	GRANTEE	PARCEL SIZE	DATE ACQUIRED	RECORDED DOC NO.	ACQUIRED AIP NO.
TR I	30 YEAR LEASE SURFACE FROM D.C.R.A. QUITCLAIM DEED TO THE SUBSURFACE	STATE OF ALASKA, DCRA BBNC	STATE OF ALASKA, DOT/PF	89.81± ac	5-15-85 7-3-85	ADA 10560	
TR II	FEE SIMPLE TITLE LOT 2 BLOCK 3 U.S.S. 4897	BLM	STATE OF ALASKA, DOT/PF	0.32 ac	11-1-76	ADA 10971	
TR III	FEE SIMPLE TITLE LOT 3 BLOCK 3 U.S.S. 4897	BLM	STATE OF ALASKA, DOT/PF	0.32 ac	11-1-76	ADA 10971	
TR IV	FEE SIMPLE TITLE PORTION OF LOT 4 BLOCK 3 U.S.S. 4897 01	BLM	STATE OF ALASKA, DOT/PF	0.33 ac	11-1-76	ADA 10971	
TR V	FEE SIMPLE TITLE LOT 5 BLOCK 3 U.S.S. 4897	BLM	STATE OF ALASKA, DOT/PF	1.52 ac	11-1-76	ADA 10971	

BY	DATE	REVISION

**CHIGNIK LAKE AIRPORT**  
 CHIGNIK LAKE, ALASKA  
 AIRPORT LAYOUT PLAN

DATE: 10/25/2007  
 SHEET: 2 OF 3



