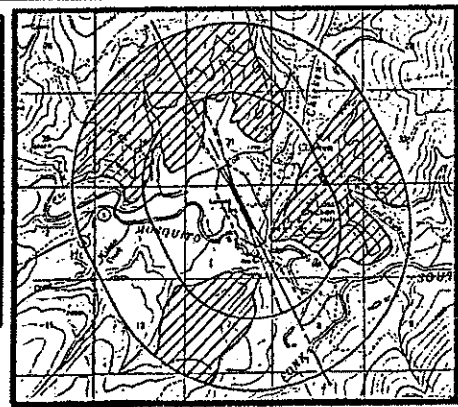
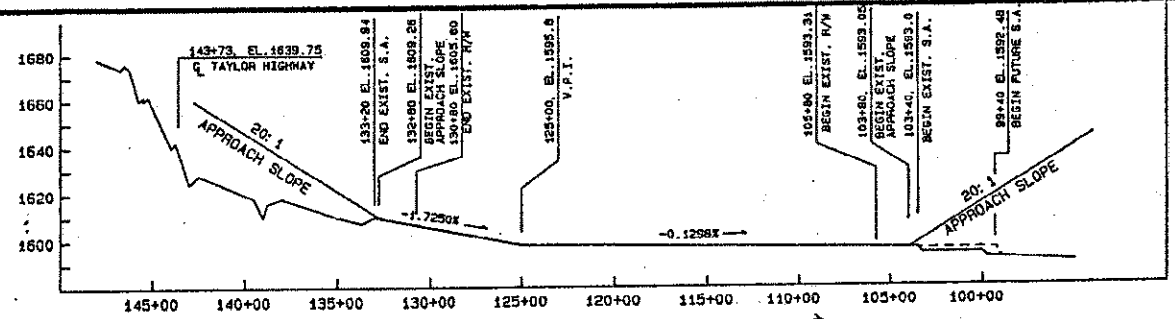


LOCATION MAP
NO SCALE

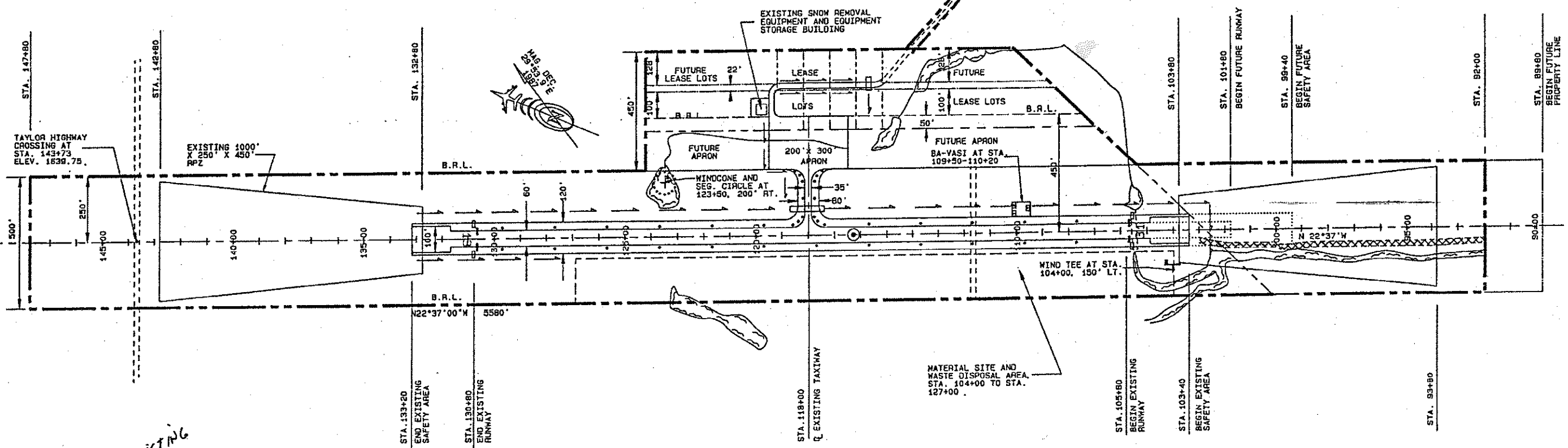


VICINITY MAP
USGS EAGLE A-2 & A-3
1" = 1 MILE



RUNWAY PROFILE
SCALE: HORIZ: 1" = 500'
VERT: 1" = 40'

NO WIND DATA AVAILABLE



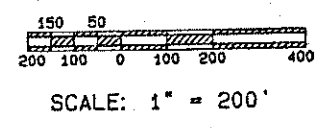
EXISTING

	RUNWAY DATA		
	EXISTING	PROPOSED	FUTURE
EFFECTIVE GRADIENT	0.50%		SAME
X WIND COVERAGE	NO DATA		NONE
INSTRUMENT RUNWAY	NONE		NONE
RUNWAY SURFACE TYPE	GRAVEL		GRAVEL
APPROACH SURFACES	20:1		20:1
RUNWAY LIGHTING	NONE		NONE
R/W DIMENSIONS	2050' X 90'	2590' X 80'	2900' X 80'
R/W SAFETY AREA	2390' X 90'	2980' X 120'	3380' X 120'

	AIRPORT DATA		
	EXISTING	PROPOSED	FUTURE
AIRPORT ELEVATION (M.S.L.)	1605.8		SAME
AIRPORT CATEGORY	UTILITY		SAME
MEAN TEMP. HOTTEST MONTH	72°		SAME
TAXIWAY LIGHTING	NONE		SAME
RAMP LIGHTING	NONE		SAME
AIRPORT REFERENCE POINT (A.R.P.)	LONG. 84°04'W LAT. 141°56.8'W		
AIRPORT AND TERMINAL NAVAIDS	NONE		SAME
DESIGN GROUP	I		SAME

	LEGEND		
	EXISTING	PROPOSED	FUTURE
PROPERTY LINE	---		
BUILDING RESTRICTION LINE (B.R.L.)	B.R.L.		B.R.L.
AVIGATION AND HAZARD EASEMENT			
DEVELOPMENT			
WIND COME & SEGMENTED CIRCLE	(F)		
BUILDINGS	■		
ROADWAYS	—		
R/L LIGHTS AND REFLECTIVE MARKERS	●		
RADIOLUMINESCENT WIND TEE	⊥		
AIRPORT REFERENCE POINT	○		
ROTATING BEACON	⊙		
MONUMENTED PROPERTY CORNER	⊕		
BLM MONUMENTED CORNER	⊗		
VASI	⊞		
SHORELINE/WATERLINE	—		
OVERHEAD POWERLINE	—		
TRAILS/DIRT ROADS	—		

DEVIATION FROM STANDARD				
ITEM	STANDARD	EXISTING	PROPOSED	FUTURE
R/W 13 APPROACH PENETRATES TOWARD 2500' FROM THRESHOLD.	20:1	SEE VICINITY MAP	SAME	SAME



DESIGN	
DRAWN	CAT
CHECKED	PDM
DATE	8-2-90 AS-BUILT
REVISIONS	9-4-87 FAA APPROVED

STATE OF ALASKA
DEPARTMENT OF TRANSPORTATION AND PUBLIC FACILITIES
NORTHERN REGION-DESIGN AND CONSTRUCTION-AVIATION
APPROVED *Daniel D. Urbach* DATE 9-25-90
DANIEL D. URBACH, P.E. CHIEF AVIATION DESIGN GROUP

CHICKEN AIRPORT
AIRPORT LAYOUT PLAN

SHEET
1
OF
1