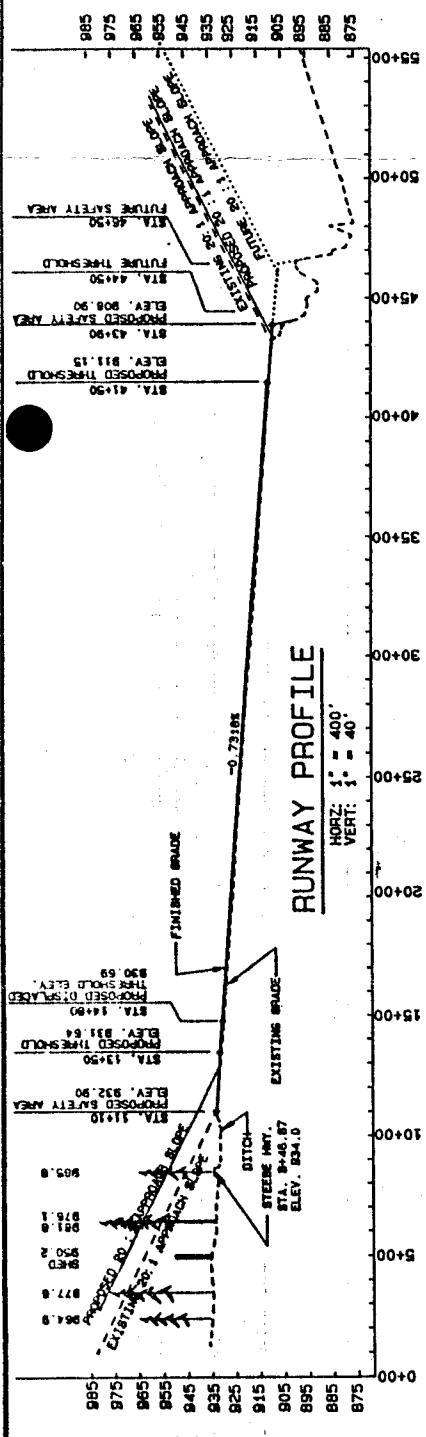
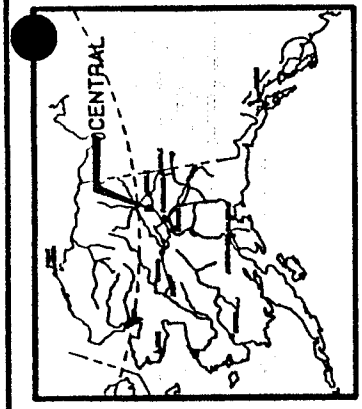


WIND ROSE
 SOURCE: AETDC, U OF A CLIMATE CENTER
 WIND DATA PERIOD: 11/1/46 - 5/31/54

WIND DATA
 12 MPH CROSSWIND COVERAGE
 RUNWAY 7-25: 98.43%

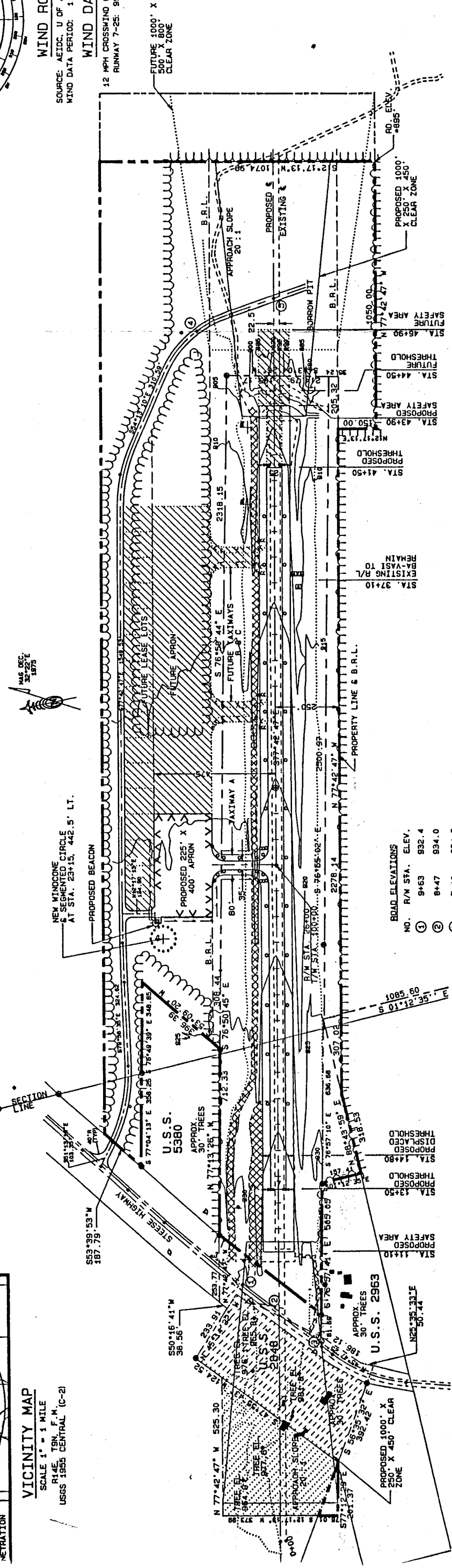


RUNWAY PROFILE
 HORIZ. 1" = 400'
 VERT. 1" = 40'



VICINITY MAP
 SCALE 1" = 1 MILE
 R4/E, TON, F, M
 USGS 1955 CENTRAL (C-2)

LOCATION MAP
 NO SCALE



LEGEND

| PROPERTY LINE | EXISTING | PROPOSED | FUTURE |
|------------------------------------|----------|----------|--------|
| BUILDING RESTRICTION LINE (B.R.L.) | B.R.L. | B.R.L. | B.R.L. |
| AVIGATION AND HAZARD EASEMENT | | | |
| DEVELOPMENT | | | |
| WIND CONE & SEGMENTED CIRCLE | | | |
| ROADWAYS | | | |
| M.I. R/W AND T/W LIGHTS | | | |
| CLEARING LIMITS | | | |
| AIRPORT REFERENCE POINT | | | |
| ROTATING BEACON | | | |
| MONUMENTED PROPERTY CORNER | | | |
| BLK MONUMENTED CORNER | | | |
| ELECTRIC TRANSFORMER | | | |
| TO BE OBLITERATED | | | |

AIRPORT DATA

| AIRPORT ELEVATION (M.S.L.) | EXISTING | PROPOSED | FUTURE |
|----------------------------------|--------------------|--------------------|--------------------|
| 932 | 932 | 932 | 932 |
| AIRPORT CATEGORY | BU | BU | BU |
| MEAN TEMP. HOTTEST MONTH | 58.7* | 58.7* | 58.7* |
| TAXIWAY LIGHTING | NONE | NONE | NONE |
| RAMP LIGHTING | NONE | NONE | NONE |
| AIRPORT REFERENCE POINT (A.R.P.) | LAT. 65°34'20" N | LAT. 65°34'20" N | LAT. 65°34'20" N |
| | LONG. 144°46'42" W | LONG. 144°46'42" W | LONG. 144°46'42" W |
| DESIGN GROUP | I | I | I |

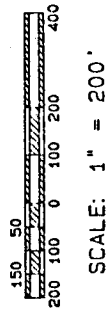
RUNWAY DATA

| EXISTING | RUNWAY 7-25 | | FUTURE |
|-------------------------|-------------|------------|------------|
| | PROPOSED | EXISTING | |
| ACTIVE GRADIENT | 0.75% | 0.751% | 0.731% |
| NO COVERAGE | | | |
| PAVEMENT RUNWAY | N/A | N/A | N/A |
| PAVEMENT SURFACE TYPE | GRAVEL | GRAVEL | GRAVEL |
| PAVEMENT STRENGTH | N/A | N/A | N/A |
| PAVEMENT SURFACES | 20:1 | 20:1 | 20:1 |
| PAVEMENT LIGHTING | NONE | NONE | NONE |
| PAVEMENT MARKING | NONE | NONE | NONE |
| PAVEMENT AID | NONE | NONE | NONE |
| PAVEMENT AID DIMENSIONS | 2700'x50' | 2800'x60' | 3100'x60' |
| PAVEMENT SAFETY AREA | 2700'x75' | 3280'x120' | 3580'x120' |

ROAD ELEVATIONS

| NO. | R/W STA. | ELEV. |
|-----|----------|-------|
| 1 | 9+63 | 932.4 |
| 2 | 8+47 | 934.0 |
| 3 | 7+10 | 934.8 |
| 4 | 46+80 | 908.1 |
| 5 | 48+12 | 891.6 |

NOTE: TREES PENETRATING RUNWAY 7 APPROACH SLOPE TO BE CUT AFTER PROPERTY INTEREST IS ACQUIRED.
 THIS ALP SUPERSEDES THE ALP DATED 8/17/89.



CENTRAL AIRPORT
AIRPORT LAYOUT PLAN

STATE OF ALASKA
 DEPARTMENT OF TRANSPORTATION AND PUBLIC FACILITIES
 NORTHERN REGION-DESIGN AND CONSTRUCTION-AVIATION

APPROVED
[Signature]
 DANIEL D. URBACH, P.E.
 CHIEF AVIATION DESIGN GROUP

DATE 4.6.89

| BY | DATE | REVISIONS |
|----|---------|--------------|
| | 9-20-89 | FAA APPROVED |

RLC
 CAT
 ED, PDM