

Vehicles

1. Yield at Entry

As you approach the roundabout there will be a yield sign and dashed yield limit line. Slow down, watch for pedestrians and bicyclists, and be prepared to stop if necessary. Yield to circulating traffic on the left, but do not stop if the way is clear.

2. Slow Down

Drive at a slow speed through the roundabout. The posted speed limit in the roundabout is 15 mph.

3. Yield to Pedestrians

Pedestrians have the right of way as in any other marked crosswalk.

4. Yield to Bicycles

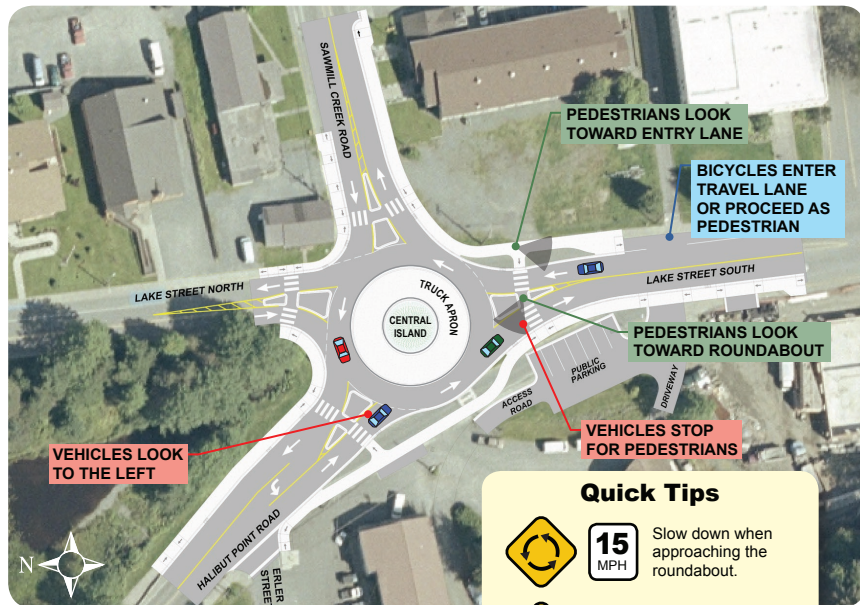
Bicyclists have the same rights and responsibilities as motorists when riding in the roundabout. Do not turn in front of or "cut off" a bicycle when exiting the roundabout.

5. Yield to Emergency Vehicles

When an emergency vehicle approaches, pull over after exiting the roundabout. Do not stop while still inside the roundabout.

How to Use a Roundabout

Sawmill Creek Road/Halibut Point Road Roundabout



Trucks

1. Truck Apron

The truck apron is designed to accommodate trailer off-tracking.

2. Oversize Loads

Use caution making right turns from Lake Street to Halibut Point Road.

Quick Tips



15
MPH

Slow down when approaching the roundabout.



Watch for pedestrians.



Stay to the right of the splitter islands.



Yield to traffic already in the roundabout, pedestrians and bicycles.



Travel in a counterclockwise direction only.

Bicycles

1. Ride with Traffic

While roundabouts don't have striped bike lanes, traffic moves slowly allowing cyclists and motorists to more effectively share space. Merge into the appropriate travel lane as you approach the roundabout, proceed through the roundabout, and merge back onto the shoulder after exiting the roundabout.

2. Share Sidewalk with Walkers

The roundabout has a wide sidewalk for cyclists and pedestrians to share. Cyclists must yield to pedestrians on the sidewalk. Ramps are provided at each shoulder to enter and exit the wide sidewalk.

Pedestrians

1. Use Roundabout Crosswalks

Walk around the perimeter of the roundabout. Use the crosswalks. Do not cross the roadway to the central island.

2. Watch for Traffic

Look and listen for approaching vehicle traffic and bicycle traffic. Choose a safe time to cross. Try to make eye contact with approaching drivers.

For More Information

Email: sitkaroundabout@alaska.gov

Visit: www.sitkaroundabout.dot.alaska.gov

Call: Loren Gehring, P.E., Construction Project Manager
Alaska Dept. of Transportation and Public Facilities, SE Region
(907) 465-4458

