



Alaska Department of Transportation & Public Facilities

**REVILLA & GRAVINA AIRPORT FERRY TERMINAL
IMPROVEMENTS**

Projects # SFHWY00085 / SFHWY00109





Project Overview & Schedule

Revilla Uplands Project

- Expand parking.
- Improve vehicle and pedestrian access ways.
- Make improvements to Tongass Highway.
- Provide new passenger waiting facilities (building or shelter).

Revilla / Gravina Marine Projects

- Construct two new ferry berths at Revilla and Gravina shuttle ferry terminals.
- Refurbish existing Revilla & Gravina ferry berths (additional projects).
- Provides redundancy and enhances use of multiple ferry boats in future.

Schedule

- Complete design/advertise construction contracts September, 2018
- Complete all construction by approximately July, 2020



Project Organization/Team

Project Organization

- Development to be conducted under two primary projects, Revilla Uplands and Revilla/Gravina Marine (ferry berths).
- Department is working closely with Ketchikan Gateway Borough.
- The Department has contracted with two design firms for these projects. MRV for Revilla Uplands and CH2M Hill for Revilla/Gravina Marine.
- Revilla Upland project is currently active and topic of today's meeting. Marine project development to start soon.

Project Team

- Project team member Introductions.



Project & Public Workshop Agenda

Revilla Uplands - Project Development Tasks

1. Preliminary Analysis and Development of Concept Designs (done)
2. Public Meeting & Workshop (today)
3. Finalize Master Plan and Preliminary Design of Preferred Alternative
4. Geotechnical Exploration and Foundation Design Report(s)
5. Final Design of Preferred Alternative (PIH, PSE & Bid Ready Documents)
6. Advertise Project(s) / Physical Construction

Revilla Uplands Public Meeting & Workshop

- Presentation of some conceptual design ideas.
- Solicit public comments and suggestions to develop a preferred alternative.
- Establish stakeholders for design input and future reviews.



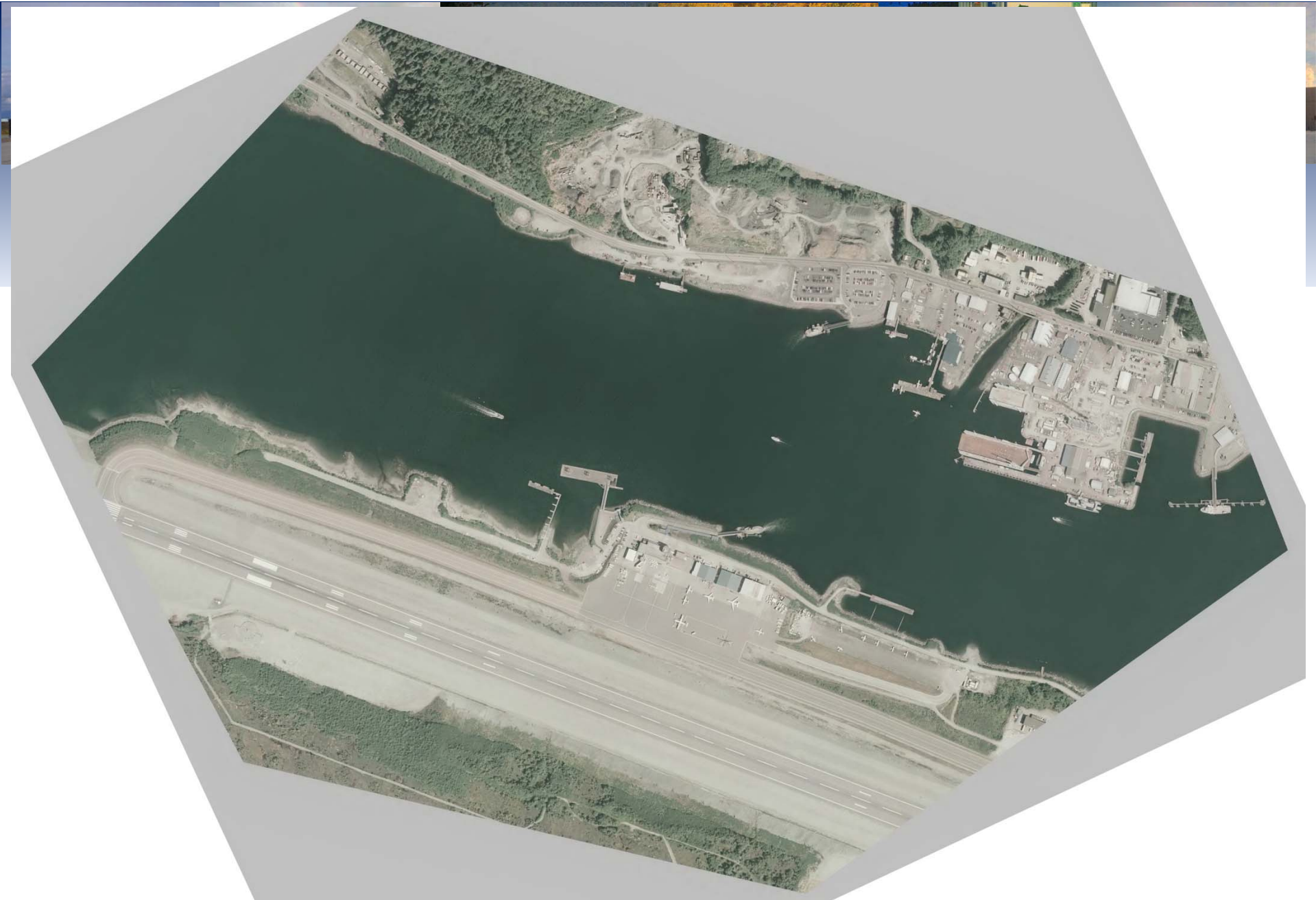
Project Website

All Southcoast Projects:

<http://dot.alaska.gov/sereg/projects/index.shtml>

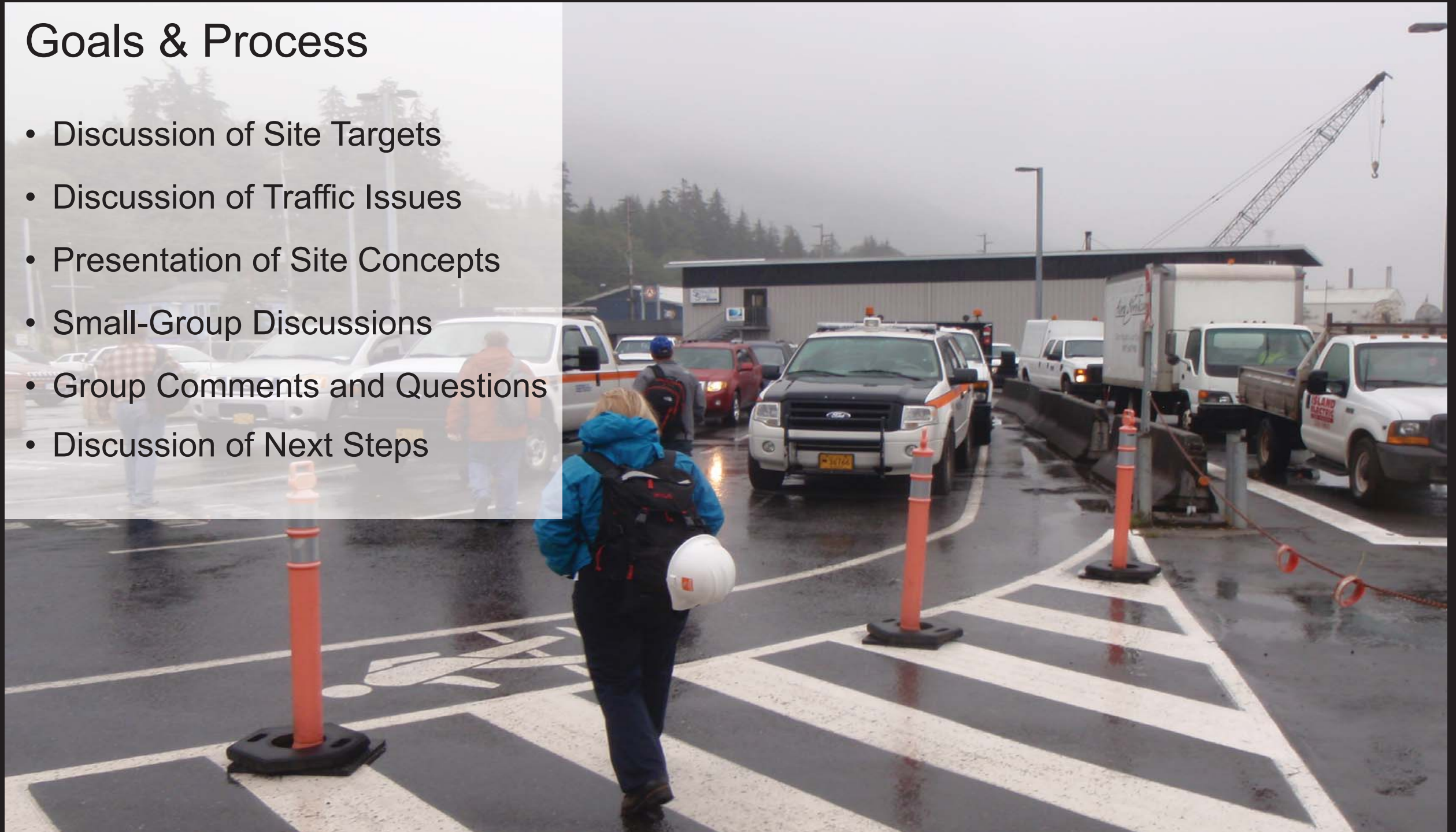
Revilla Uplands Project:

http://dot.alaska.gov/sereg/projects/ktn_revilla_upland_berth/index.shtml



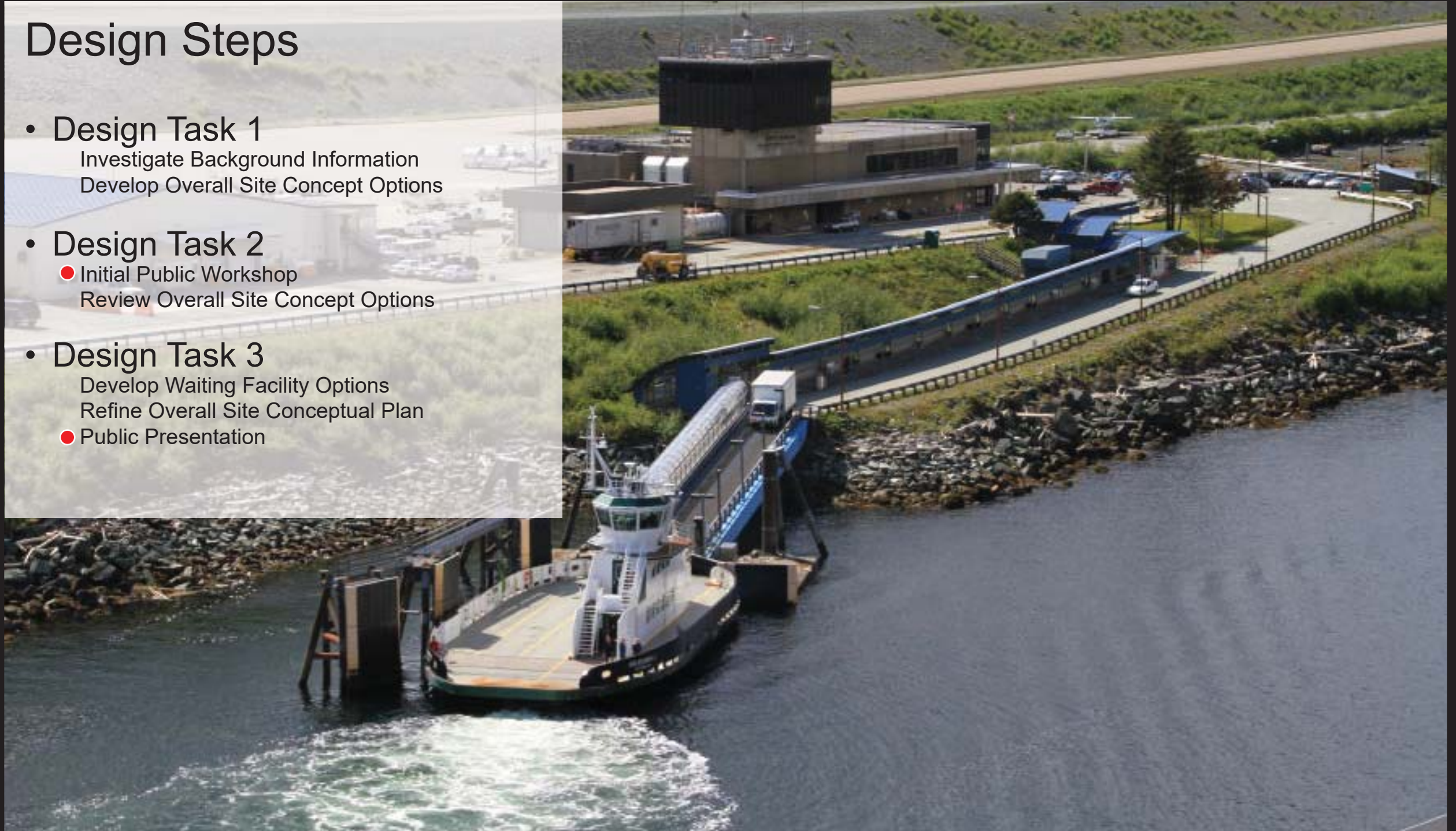
Goals & Process

- Discussion of Site Targets
- Discussion of Traffic Issues
- Presentation of Site Concepts
- Small-Group Discussions
- Group Comments and Questions
- Discussion of Next Steps



Design Steps

- **Design Task 1**
 - Investigate Background Information
 - Develop Overall Site Concept Options
- **Design Task 2**
 - Initial Public Workshop
 - Review Overall Site Concept Options
- **Design Task 3**
 - Develop Waiting Facility Options
 - Refine Overall Site Conceptual Plan
 - Public Presentation



Design Targets

- | | Existing |
|---|----------------|
| • Ferry Loading Queue: 640' - 960' (1-2 ferry loads) | 640' |
| • Ticketing Queue: 110' (5+ vehicles) | 260' (Gravina) |
| • Ferry Off-Loading: 340' - 480' (17 - 24 vehicles) | 200' |
| • Passenger Drop-Off: 150'+ (7+ vehicles) | 100' +/- |
| • Passenger Pick-Up: 250'+ (12+ vehicles) | 100' +/- |
| • Taxi Lane: 200'+ (10+ vehicles) | 100' +/- |
| • Parking Stalls: 425 stalls | 265 stalls |

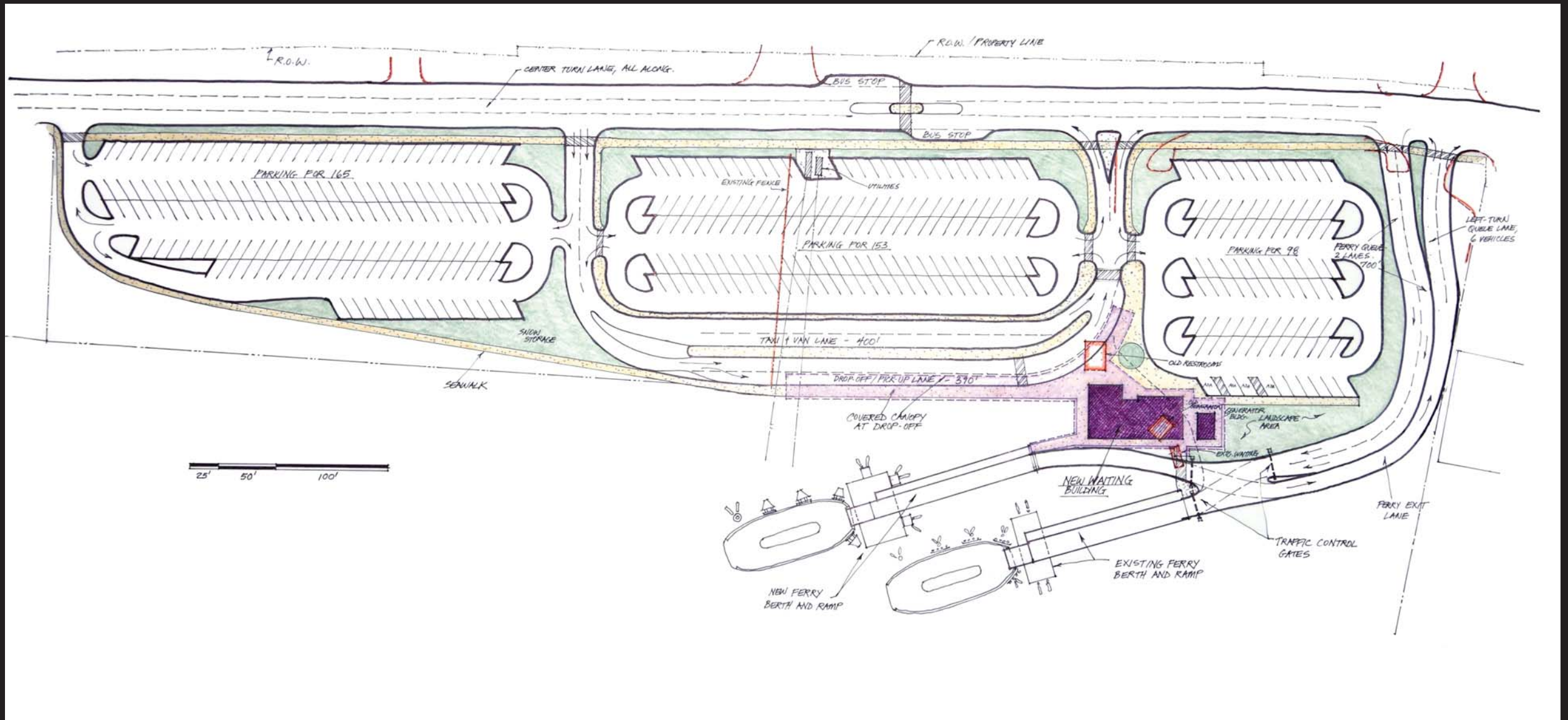




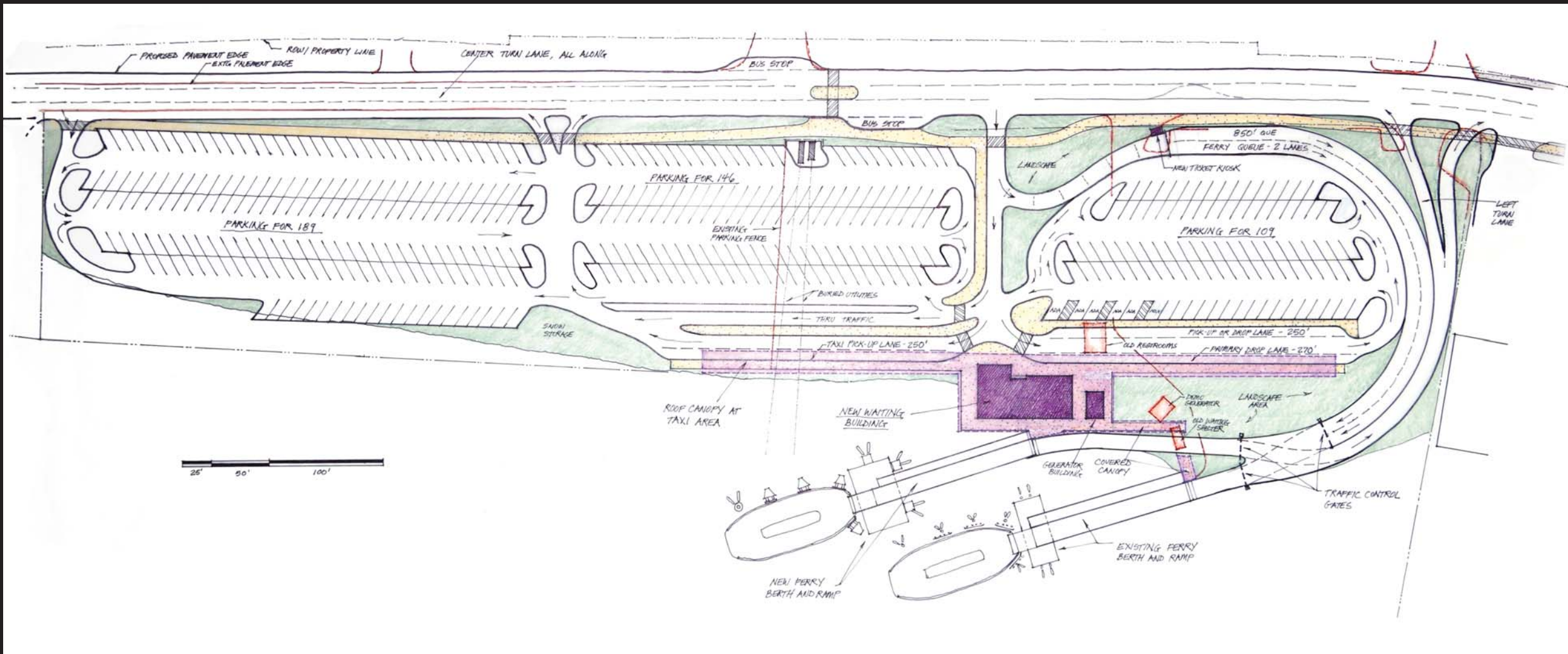
Tongass Design Issues



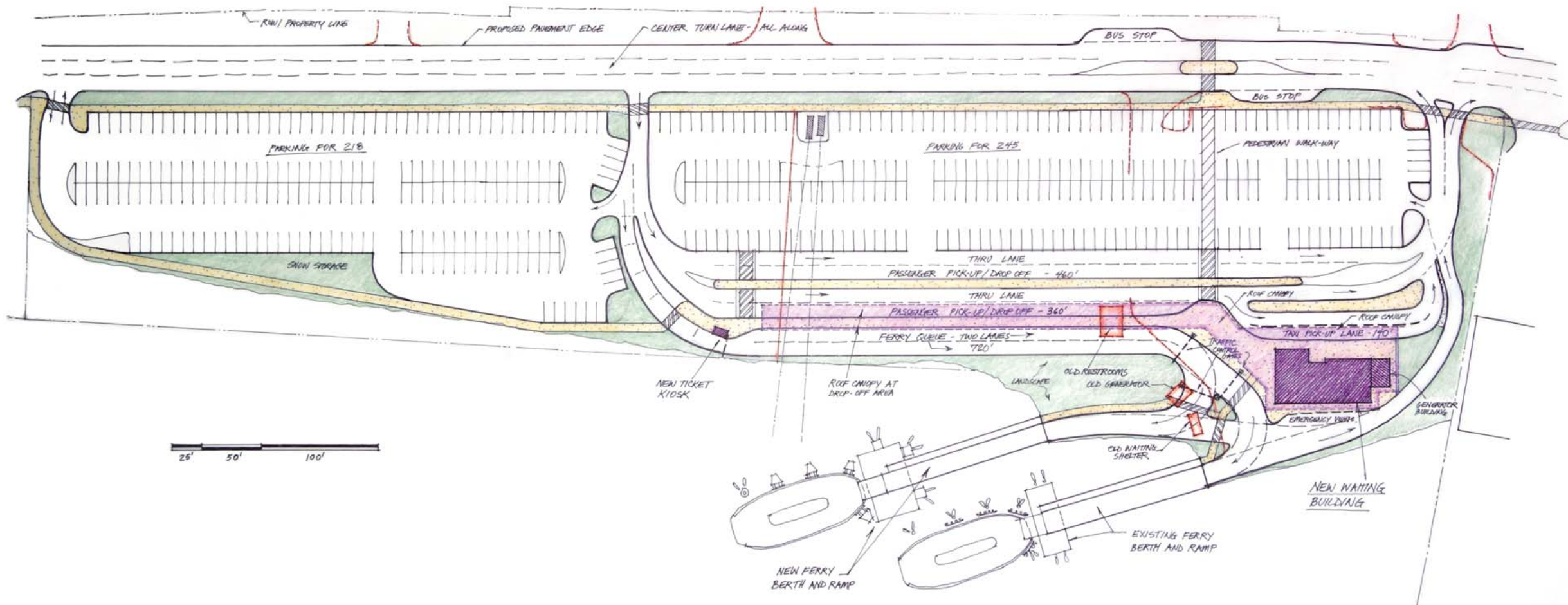
Tongass Design Issues



Concept Option A



Concept Option B



Concept Option C



Questions & Comments