

**WATER BODIES:**  
MENDENHALL RIVER

**LOCATED IN:**  
SECTIONS 25 AND 36, T40S, R65E,  
JUNEAU B-2 USGS QUAD MAP

## LOCATION MAP

### OPTION A

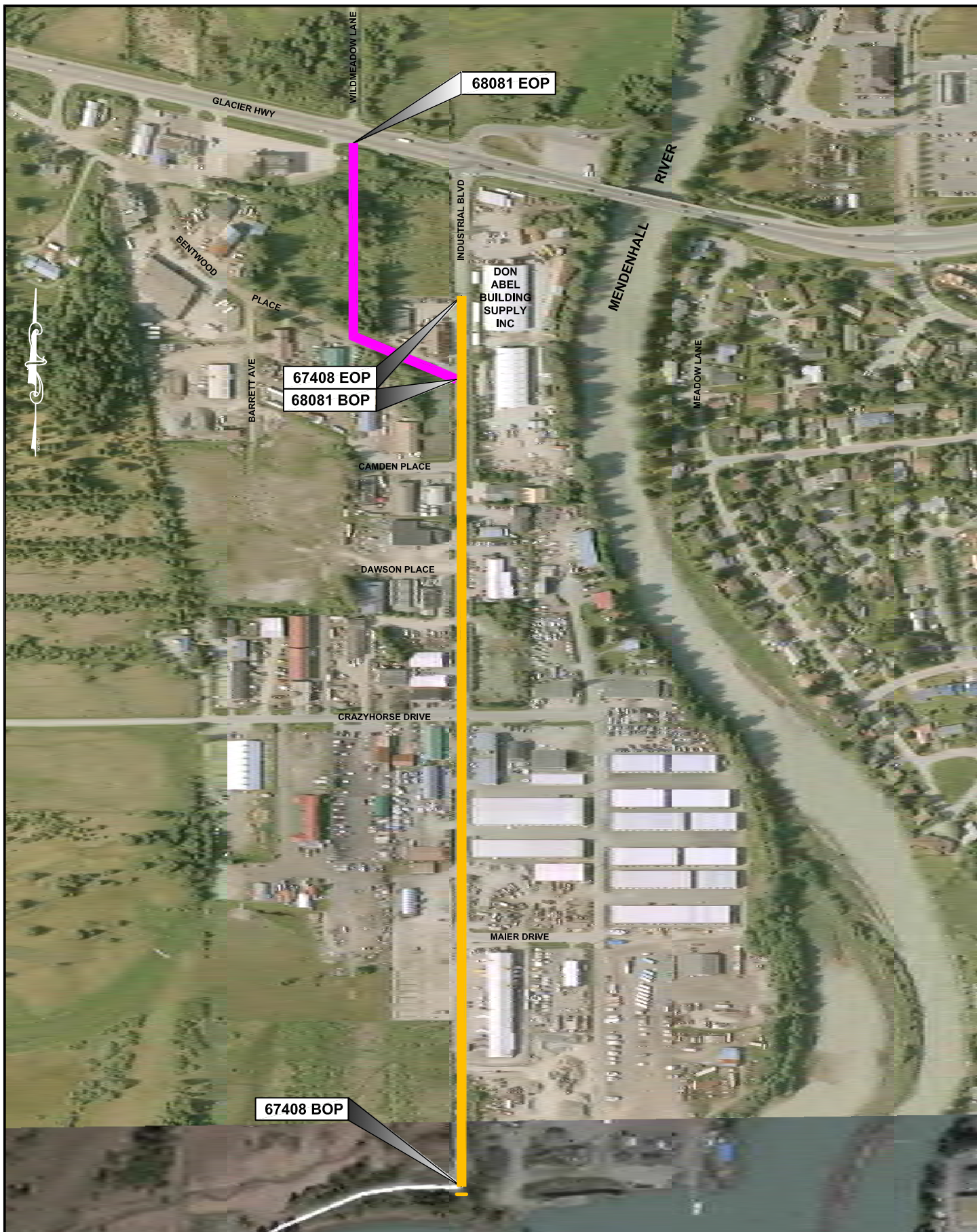
APPLICATION BY:  
ALASKA STATE DEPT. OF TRANSPORTATION  
AND PUBLIC FACILITIES  
SOUTHEAST REGION

67408-JNU INDUSTRIAL BLVD  
WIDENING AND SIDEWALK  
68081-JNU GLACIER HWY INDUSTRIAL BLVD  
INTERSECTION IMPROVEMENT

AT: JUNEAU, ALASKA

DATE: March, 2015

SHEET 3 OF 6



WATER BODIES:  
MENDENHALL RIVER

LOCATED IN:  
SECTIONS 25 AND 36, T40S, R65E,  
JUNEAU B-2 USGS QUAD MAP

## LOCATION MAP OPTION B

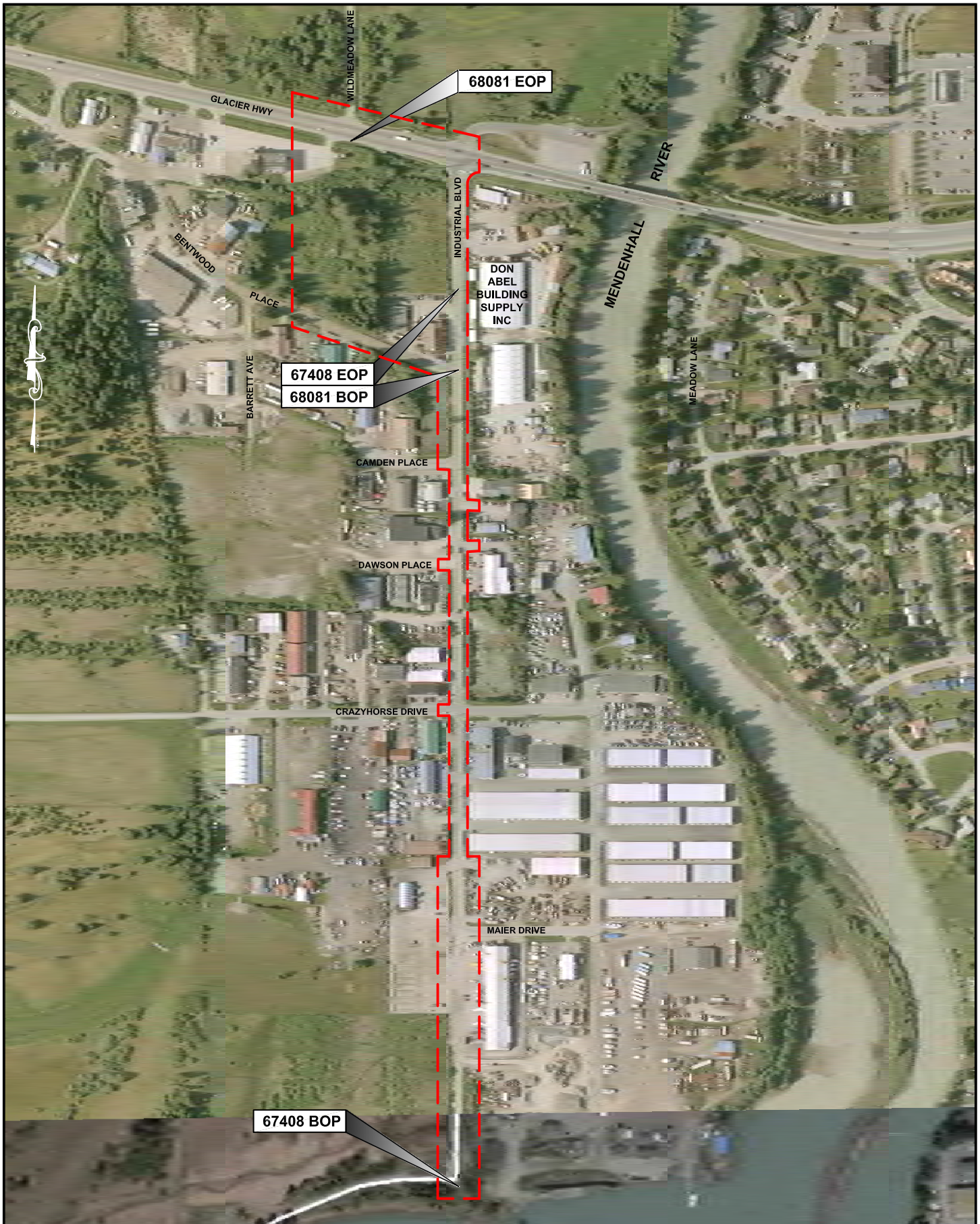
APPLICATION BY:  
ALASKA STATE DEPT. OF TRANSPORTATION  
AND PUBLIC FACILITIES  
SOUTHEAST REGION

67408-JNU INDUSTRIAL BLVD  
WIDENING AND SIDEWALK  
68081-JNU GLACIER HWY INDUSTRIAL BLVD  
INTERSECTION IMPROVEMENT

AT: JUNEAU, ALASKA

DATE: March, 2015

SHEET 4 OF 6



WATER BODIES:  
MENDENHALL RIVER

LOCATED IN:  
SECTIONS 25 AND 36, T40S, R65E,  
JUNEAU B-2 USGS QUAD MAP

## PRELIMINARY AREA OF POTENTIAL EFFECT

APPLICATION BY:  
ALASKA STATE DEPT. OF TRANSPORTATION  
AND PUBLIC FACILITIES  
SOUTHEAST REGION

67408-JNU INDUSTRIAL BLVD  
WIDENING AND SIDEWALK  
68081-JNU GLACIER HWY INDUSTRIAL BLVD  
INTERSECTION IMPROVEMENT

AT: JUNEAU, ALASKA

DATE: March, 2015

SHEET 5 OF 6