



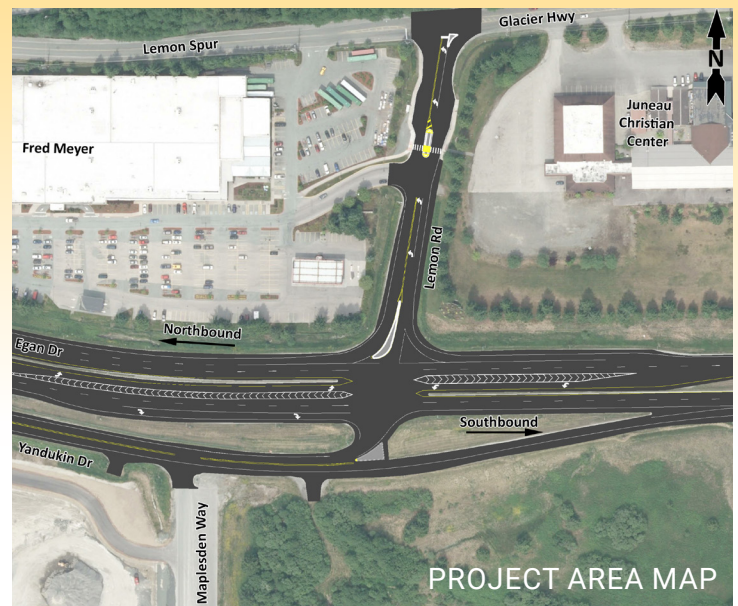
Egan / Yandukin Intersection Improvements Project

PROJECT FACT SHEET

PROJECT OVERVIEW

In response to public safety and connectivity concerns at the intersection of Egan and Yandukin Drives in Juneau, Alaska, the Alaska Department of Transportation & Public Facilities (DOT&PF) is working on ways to make improvements for transportation users.

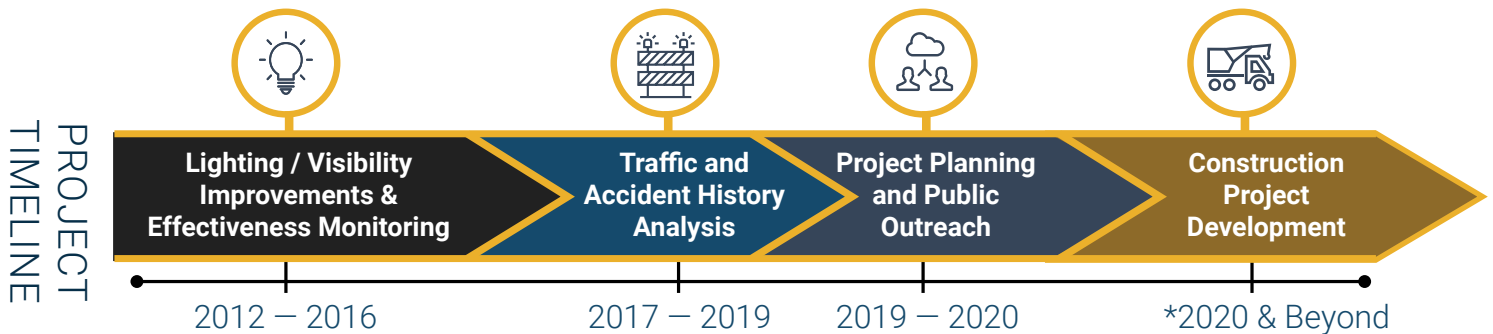
DOT&PF has determined that the traffic dynamics along the corridor are complex. For example, apparent factors in left-hand-turn crashes include driver difficulty in judging gaps in traffic. Insufficient traffic gaps and environmental conditions like darkness and wet or icy roads are contributing to crash severity and frequency. Previously identified potential improvement options create tradeoffs.



PROJECT AREA MAP

IMPROVEMENT EFFORTS

DOT&PF is engaging the community of Juneau to identify possible options that could be quickly implemented to improve safety at the intersection and also working on longer-range solutions to improve safety and connectivity in the overall Egan and Yandukin area.



PROJECT BENEFITS

1



Safety enhancements for motorists, pedestrians, and bicyclists

2



System connectivity and acceptable traffic flow

3



Improved pedestrian/bicycle access across the intersection

Questions? **James Brown, DOT&PF** | (907) 465-1796 eganyandukin@alaska.gov

Egan Drive and Yandukin Drive Intersection Improvements Project - SFH WY00079 | <http://dot.alaska.gov/eganyandukin>

*Pending Available Funding