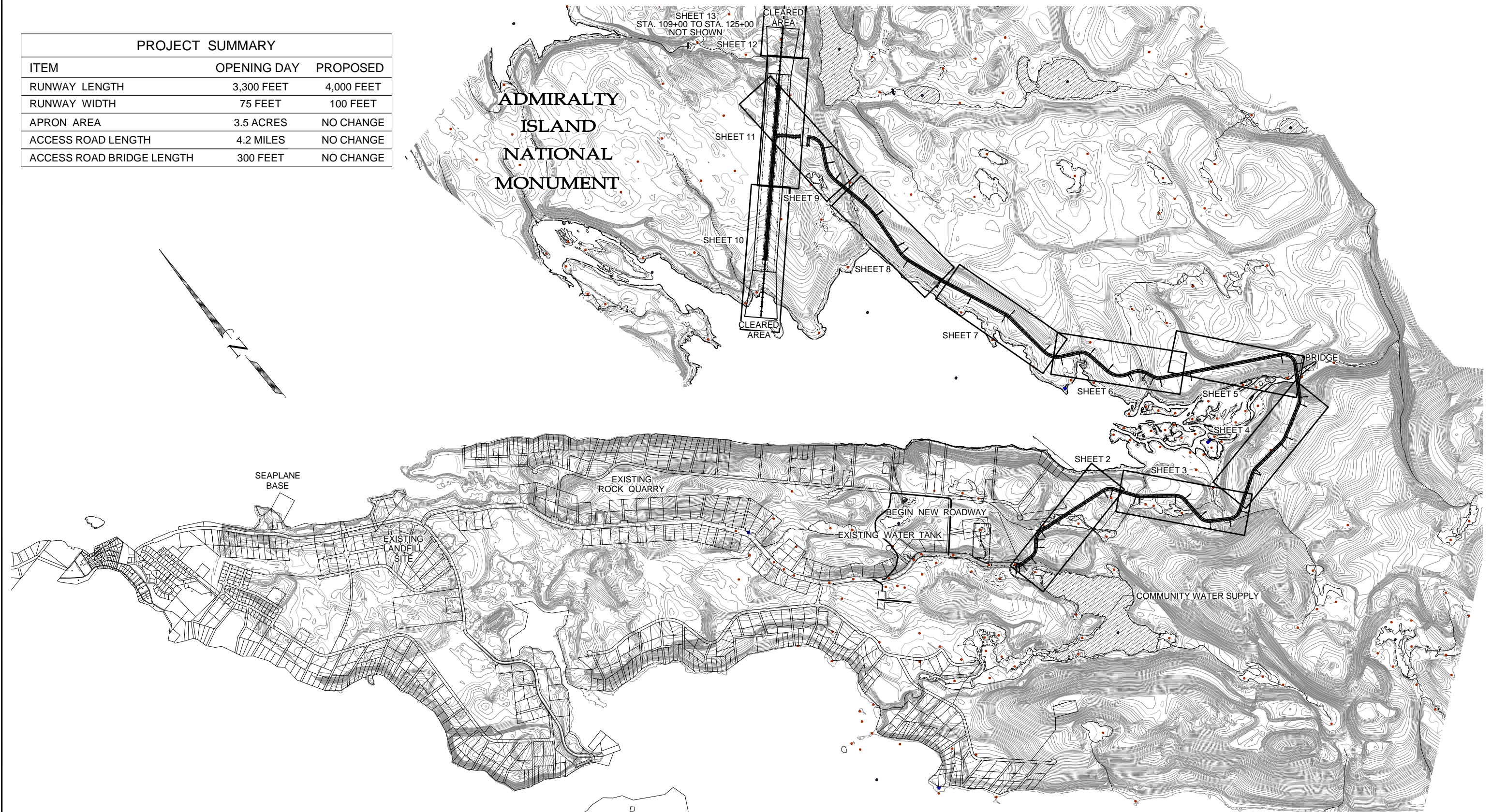


PROJECT SUMMARY		
ITEM	OPENING DAY	PROPOSED
RUNWAY LENGTH	3,300 FEET	4,000 FEET
RUNWAY WIDTH	75 FEET	100 FEET
APRON AREA	3.5 ACRES	NO CHANGE
ACCESS ROAD LENGTH	4.2 MILES	NO CHANGE
ACCESS ROAD BRIDGE LENGTH	300 FEET	NO CHANGE



STATE OF ALASKA
DEPARTMENT OF TRANSPORTATION
AND PUBLIC FACILITIES

FIGURE 5.
PROPOSED ANGOON AIRPORT SITE, APRON, AND
ROAD ACCESS: PLAN & PROFILE SHEET LAYOUT
SHEET 1 OF 13



ANGOON AIRPORT
MASTER PLAN



STATE OF ALASKA
DEPARTMENT OF TRANSPORTATION
AND PUBLIC FACILITIES

FIGURE 5.
ACCESS ROAD PLAN & PROFILE
STATION 10+00 TO STATION 40+00
SHEET 2 OF 13



ANGOON AIRPORT
MASTER PLAN

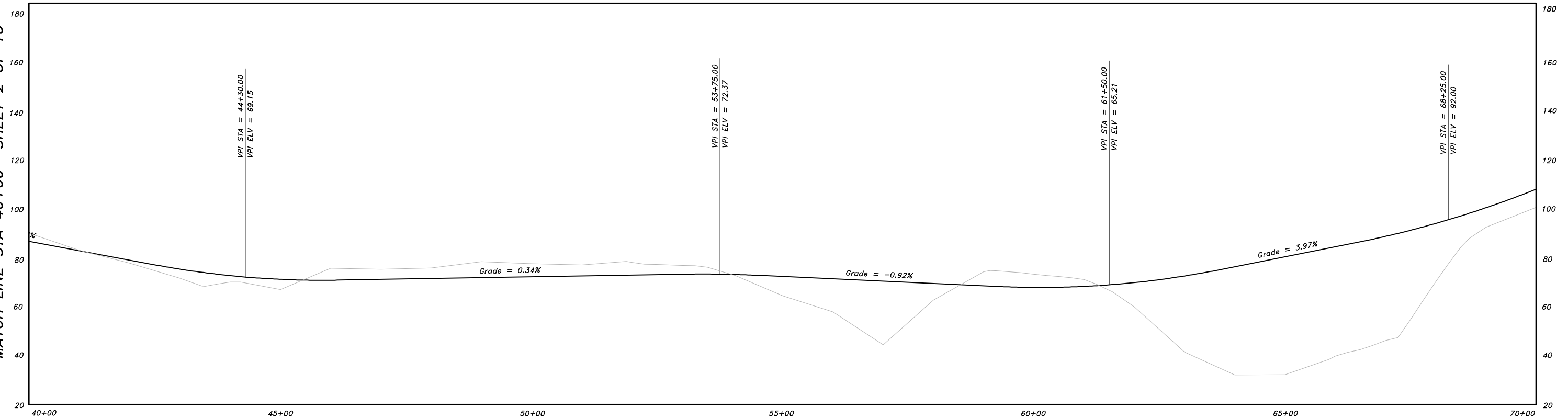
F:\2004\041404\Master Plan Figures\F&P Access Road.dwg PLOT: May 25, 2006 at: 4:25pm

MATCH LINE STA 40+00 SHEET 2 OF 13



MATCH LINE STA 70+00 SHEET 4 OF 13

MATCH LINE STA 40+00 SHEET 2 OF 13



MATCH LINE STA 70+00 SHEET 4 OF 13



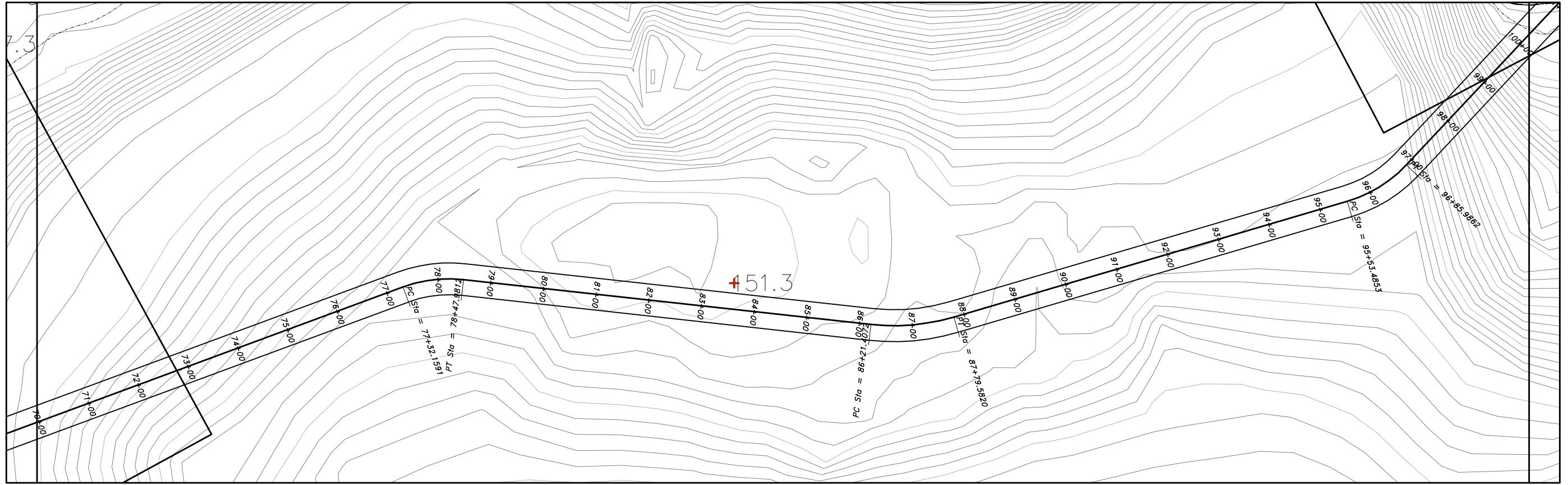
STATE OF ALASKA
DEPARTMENT OF TRANSPORTATION
AND PUBLIC FACILITIES

FIGURE 5.
ACCESS ROAD PLAN & PROFILE
STATION 40+00 TO STATION 70+00
SHEET 3 OF 13



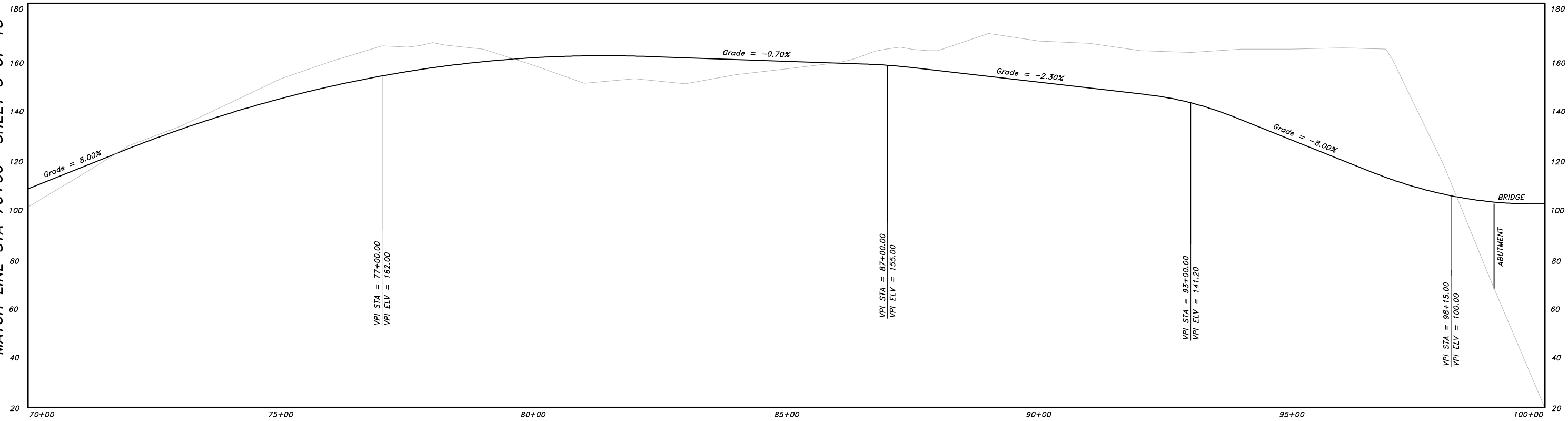
ANGOON AIRPORT
MASTER PLAN

MATCH LINE STA 70+00 SHEET 3 OF 13



MATCH LINE STA 100+00 SHEET 5 OF 13

MATCH LINE STA 70+00 SHEET 3 OF 13



MATCH LINE STA 100+00 SHEET 5 OF 13



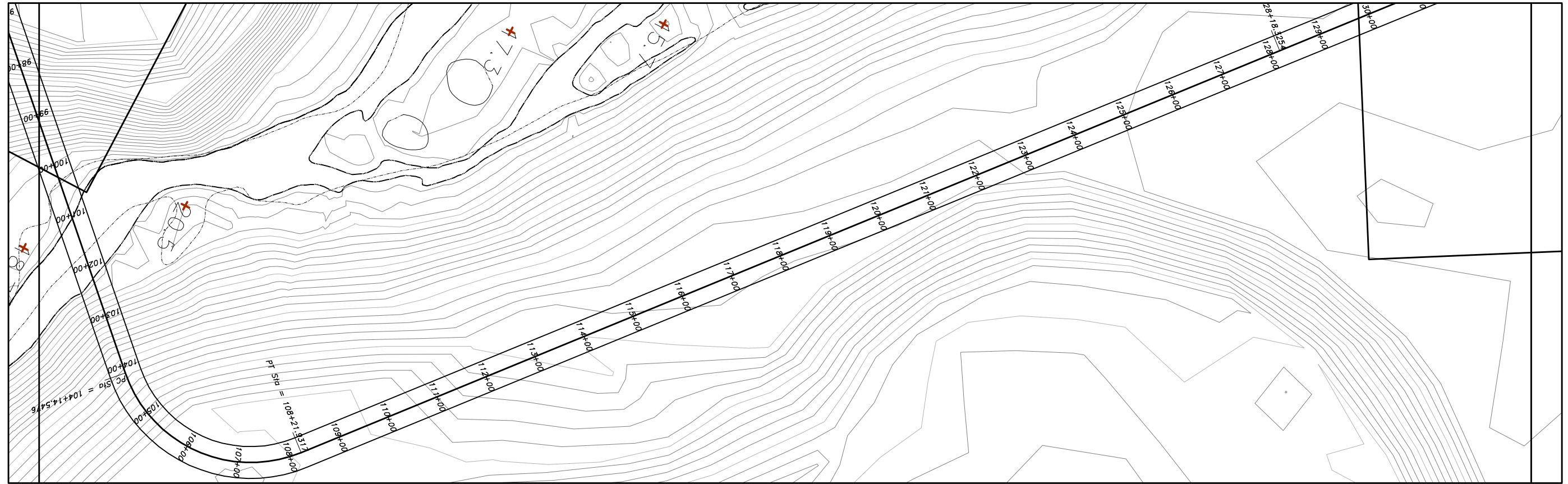
STATE OF ALASKA
DEPARTMENT OF TRANSPORTATION
AND PUBLIC FACILITIES

FIGURE 5.
ACCESS ROAD PLAN & PROFILE
STATION 70+00 TO STATION 100+00
SHEET 4 OF 13



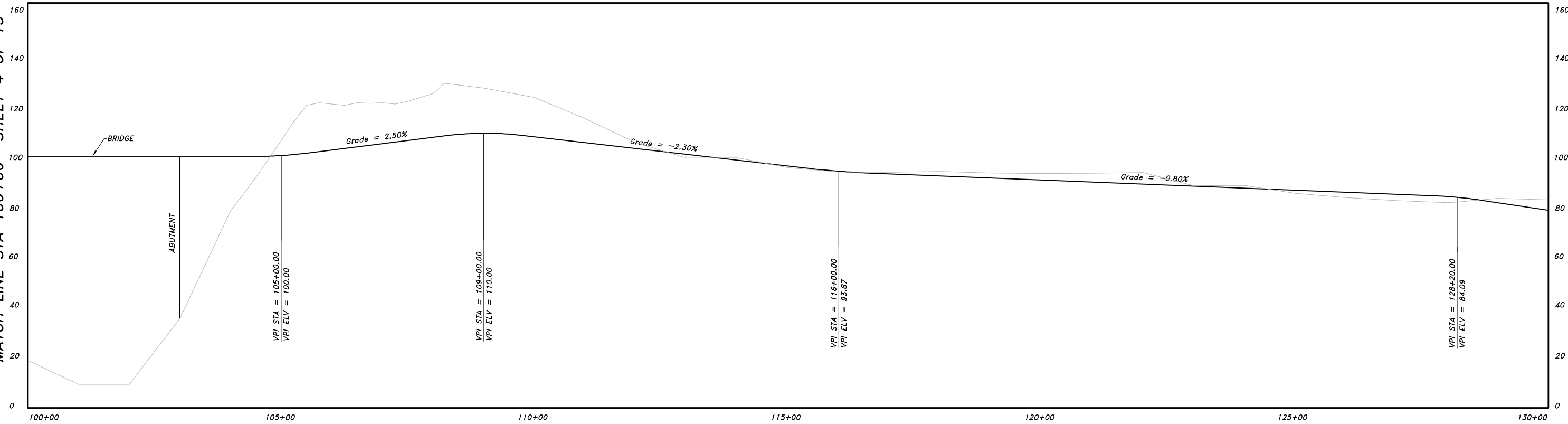
ANGOON AIRPORT
MASTER PLAN

MATCH LINE STA 100+00 SHEET 4 OF 13



MATCH LINE STA 130+00 SHEET 6 OF 13

MATCH LINE STA 100+00 SHEET 4 OF 13



MATCH LINE STA 130+00 SHEET 6 OF 13



STATE OF ALASKA
DEPARTMENT OF TRANSPORTATION
AND PUBLIC FACILITIES

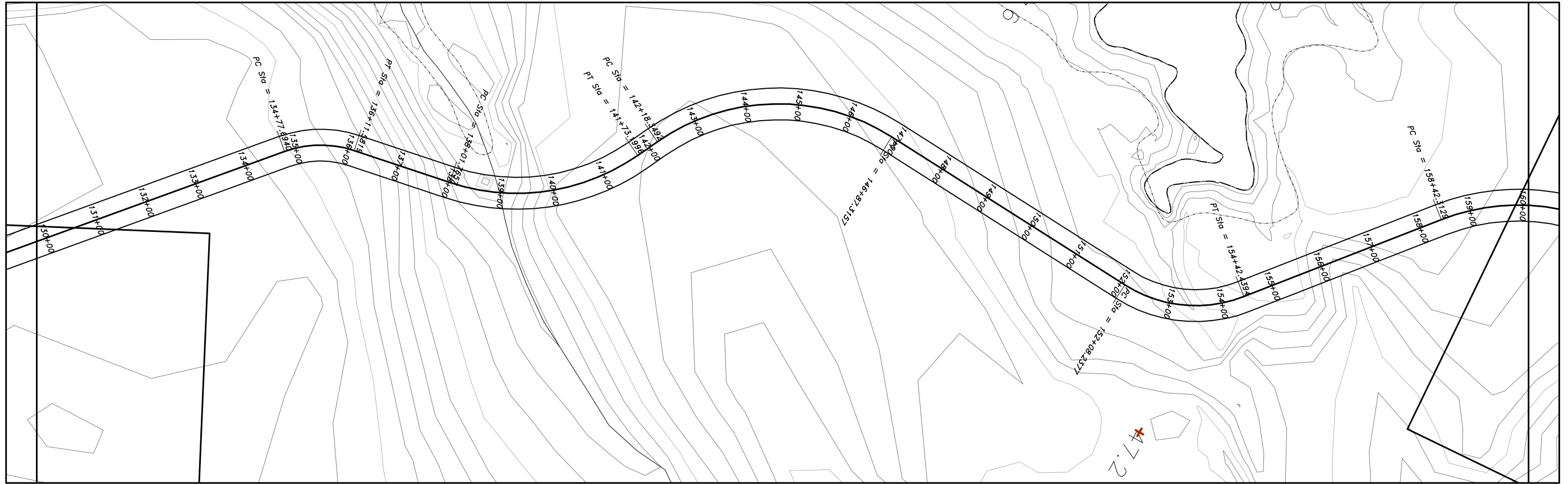
FIGURE 5.
ACCESS ROAD PLAN & PROFILE
STATION 100+00 TO STATION 130+00
SHEET 5 OF 13



ANGOON AIRPORT
MASTER PLAN

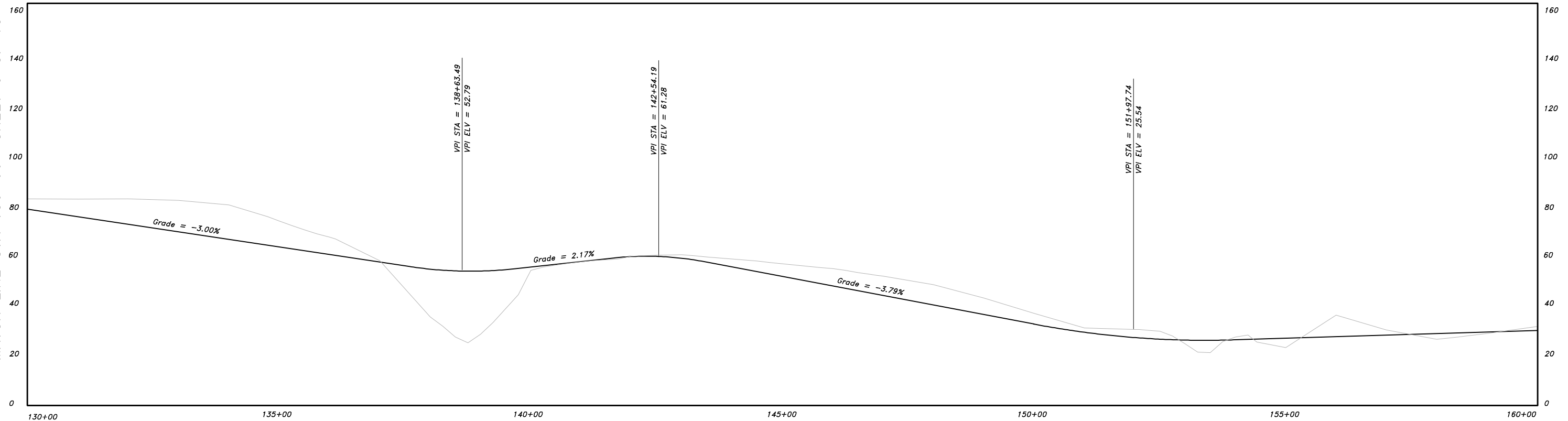
F:\2004\041404\Master Plan Figures\2&P Access Road.dwg PLOT: May 25, 2006 at: 4:25pm

MATCH LINE STA 130+00 SHEET 5 OF 13



MATCH LINE STA 160+00 SHEET 7 OF 13

MATCH LINE STA 130+00 SHEET 5 OF 13



MATCH LINE STA 160+00 SHEET 7 OF 13



STATE OF ALASKA
DEPARTMENT OF TRANSPORTATION
AND PUBLIC FACILITIES

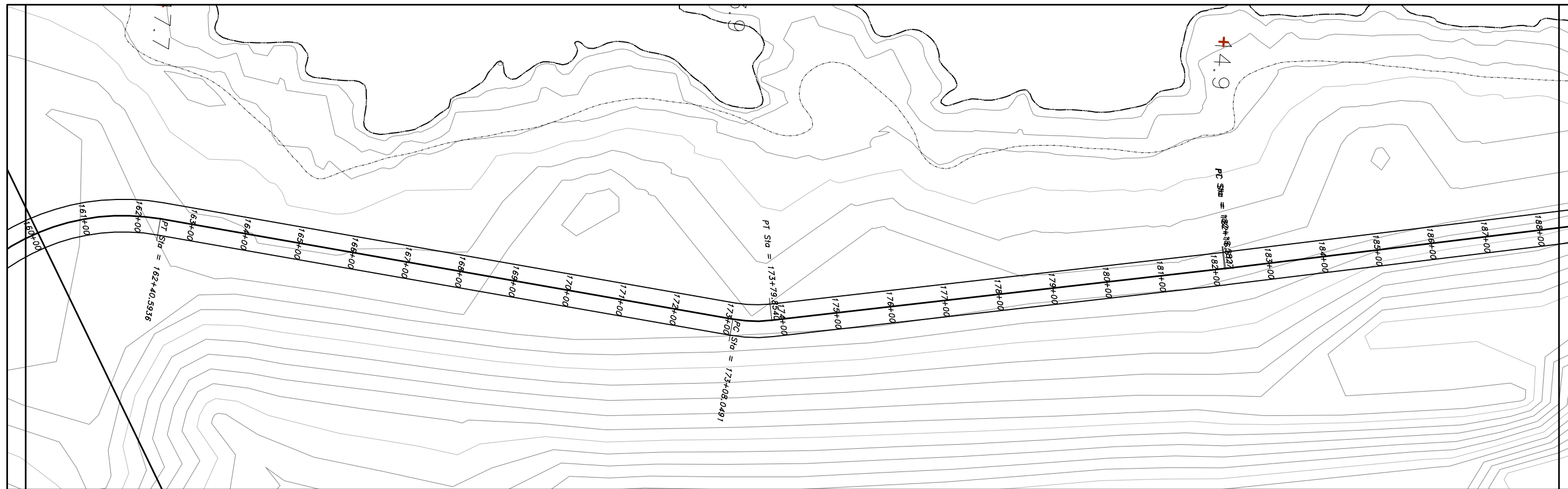
FIGURE 5.
ACCESS ROAD PLAN & PROFILE
STATION 130+00 TO STATION 160+00
SHEET 6 OF 13



ANGOON AIRPORT
MASTER PLAN

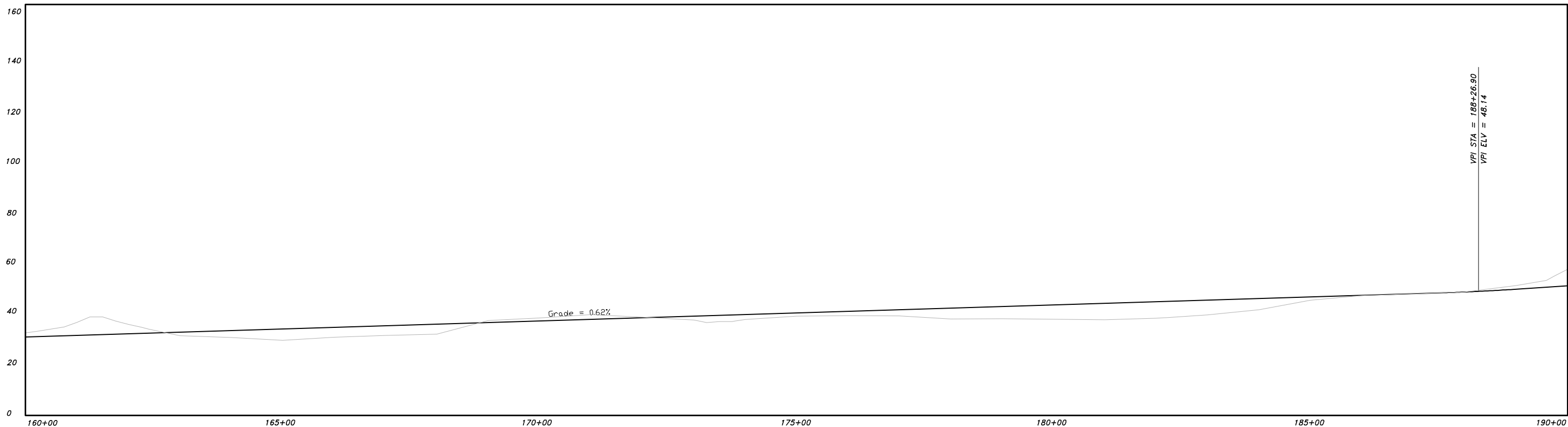
F:\2004\041404\Master Plan Figures\F&P Access Road.dwg PLOT: May 25, 2006 at: 4:25pm

MATCH LINE STA 160+00 SHEET 6 OF 13



MATCH LINE STA 190+00 SHEET 8 OF 13

MATCH LINE STA 160+00 SHEET 6 OF 13



MATCH LINE STA 190+00 SHEET 8 OF 13



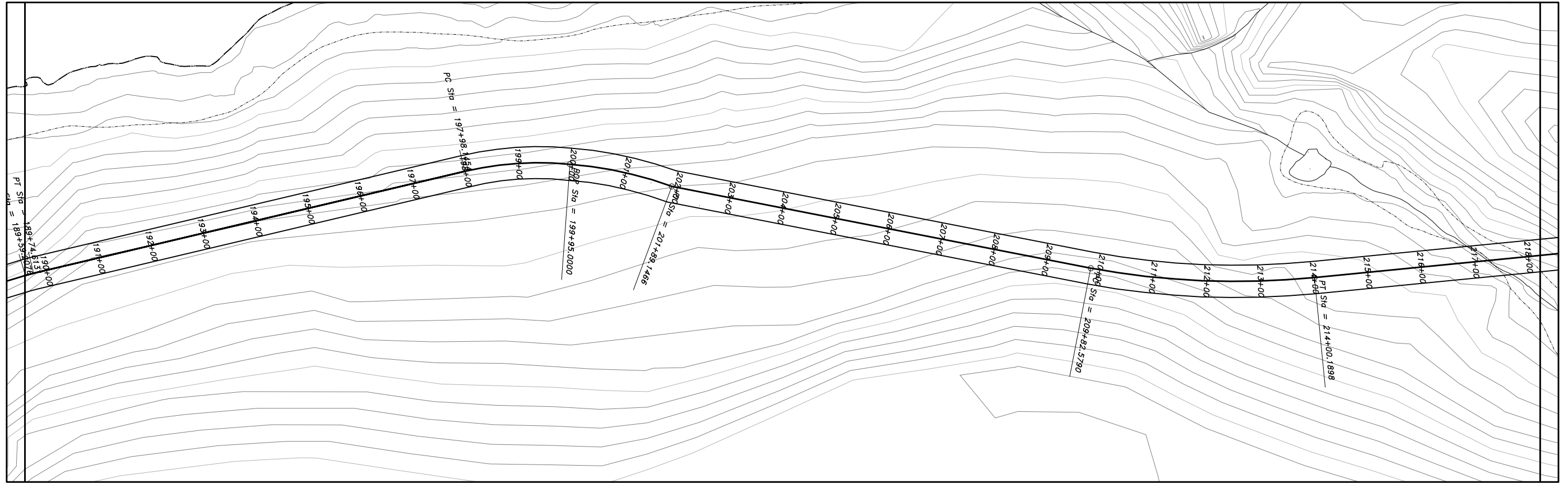
STATE OF ALASKA
DEPARTMENT OF TRANSPORTATION
AND PUBLIC FACILITIES

FIGURE 5.
ACCESS ROAD PLAN & PROFILE
STATION 160+00 TO STATION 190+00
SHEET 7 OF 13



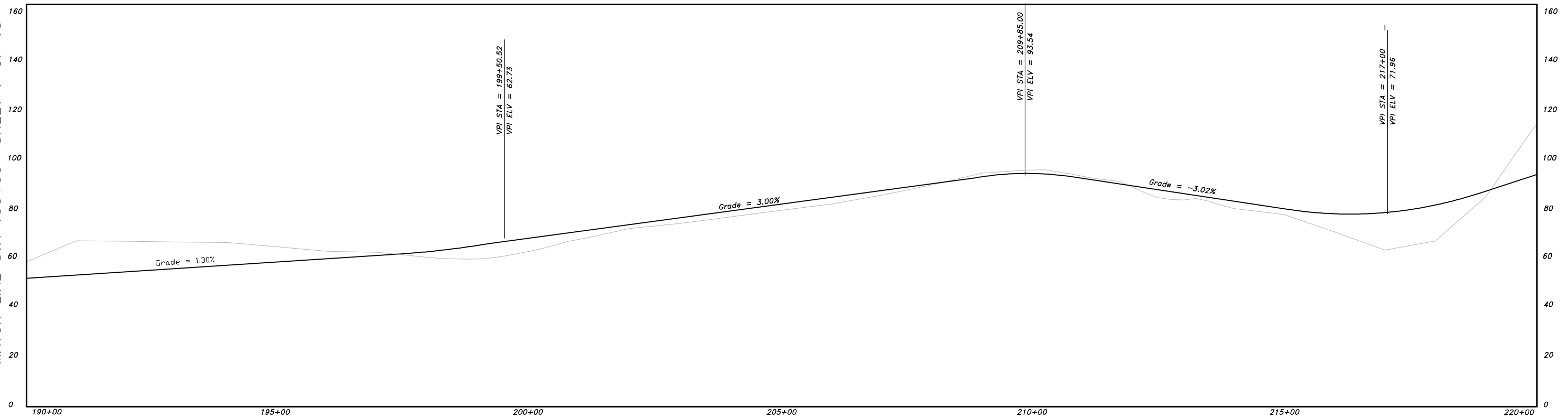
ANGOON AIRPORT
MASTER PLAN

MATCH LINE STA 190+00 SHEET 7 OF 13



MATCH LINE STA 220+00 SHEET 9 OF 13

MATCH LINE STA 190+00 SHEET 7 OF 13



MATCH LINE STA 220+00 SHEET 9 OF 13



STATE OF ALASKA
DEPARTMENT OF TRANSPORTATION
AND PUBLIC FACILITIES

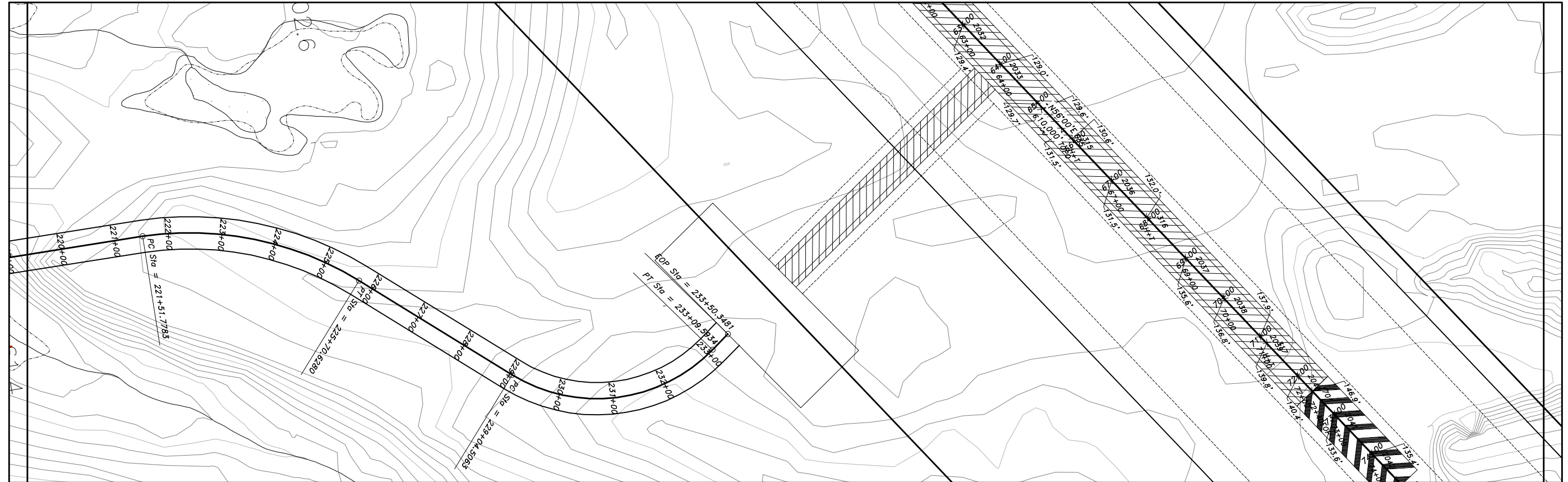
FIGURE 5.
ACCESS ROAD PLAN & PROFILE
STATION 190+00 TO STATION 220+00
SHEET 8 OF 13



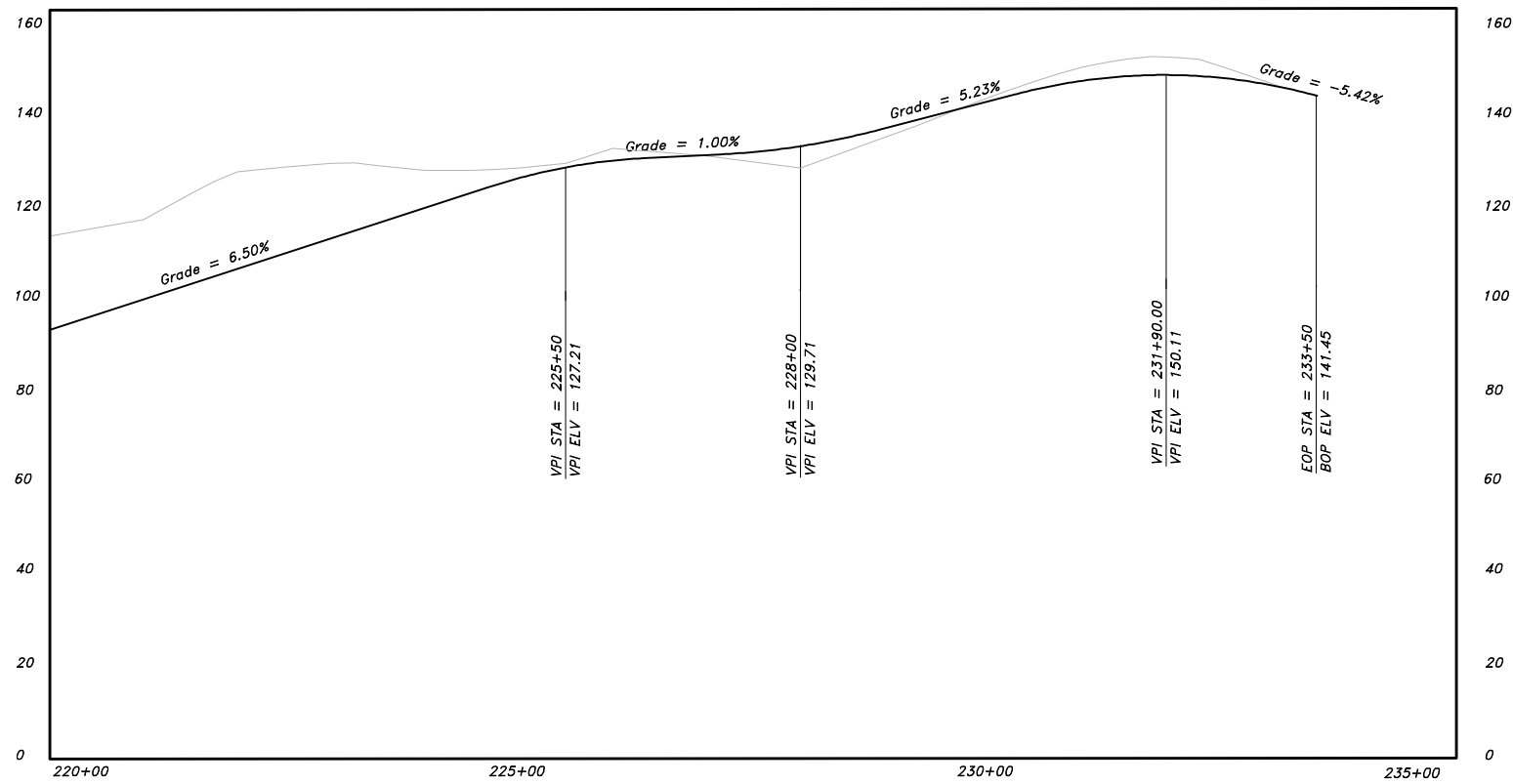

ANGOON AIRPORT
MASTER PLAN

F:\2004\041404\Master Plan Figures\F&P Access Road.dwg PLOT: May 25, 2006 at: 4:26pm

MATCH LINE STA 220+00 SHEET 8 OF 13



MATCH LINE STA 220+00 SHEET 8 OF 13

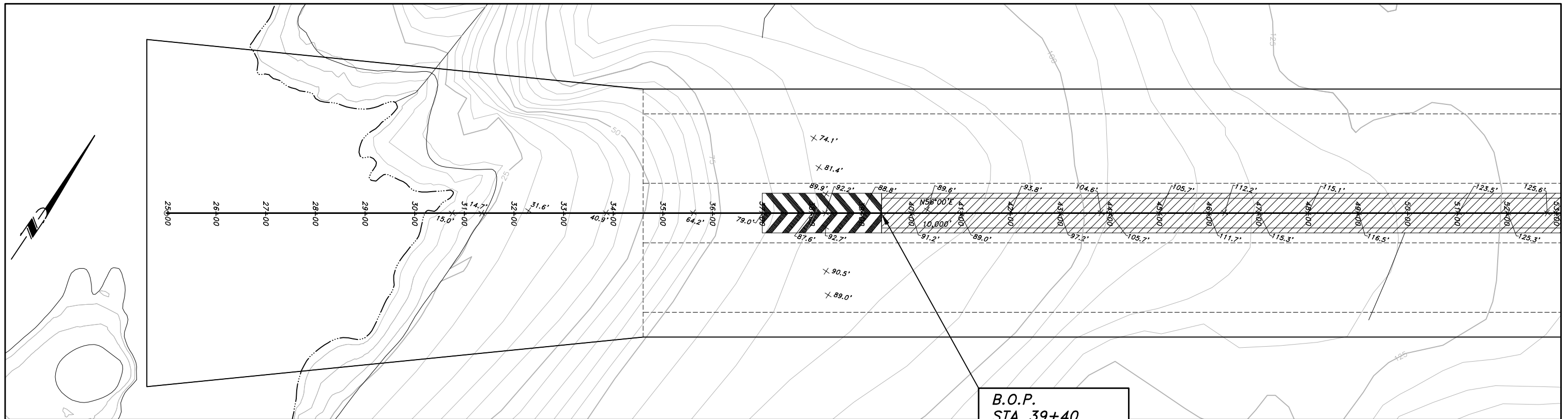
STATE OF ALASKA
 DEPARTMENT OF TRANSPORTATION
 AND PUBLIC FACILITIES

FIGURE 5.
 ACCESS ROAD PLAN & PROFILE
 STATION 220+00 TO STATION 235+00
 SHEET 9 OF 13



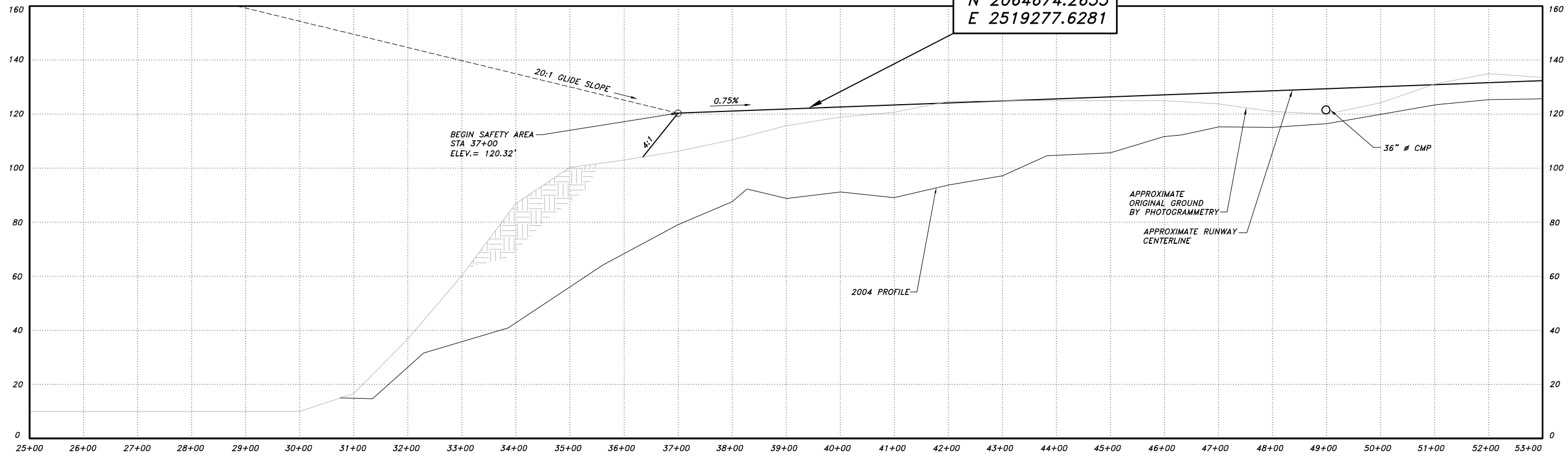
ANGOON AIRPORT
 MASTER PLAN

A:\2004\041404\Master Plan\Figures\F&P - Airstrip.dwg PLOT: May 25, 2006 at: 4:27pm



MATCH LINE STA 53+00 SHEET 11 OF 13

B.O.P.
 STA 39+40
 ELEV.=122.12'
 N 2064674.2655
 E 2519277.6281



MATCH LINE STA 53+00 SHEET 11 OF 13



STATE OF ALASKA
 DEPARTMENT OF TRANSPORTATION
 AND PUBLIC FACILITIES

FIGURE 5.
 AIRPORT PLAN & PROFILE
 STATION 25+00 TO STATION 53+00
 SHEET 10 OF 13



ANGOON AIRPORT
 MASTER PLAN

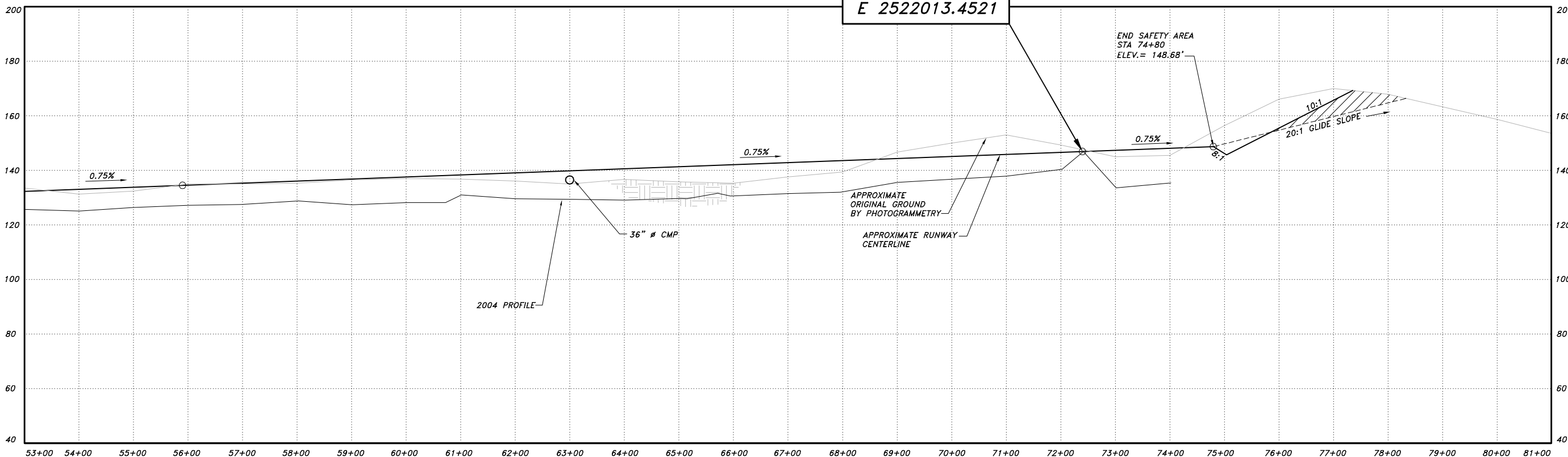
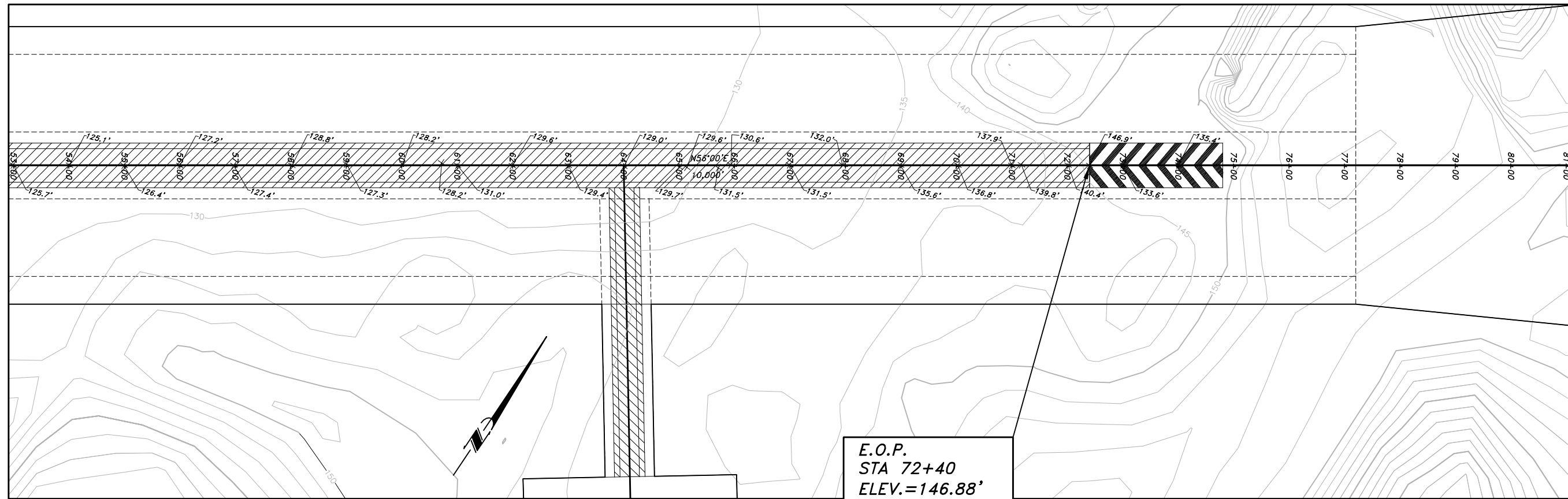
FA 2004\041404\Master Plan Figures\Fig 2 Airstrip.dwg PLOT: May 25, 2006 at: 4:26pm

MATCH LINE STA 53+00 SHEET 10 OF 13

MATCH LINE STA 53+00 SHEET 10 OF 13

MATCH LINE STA 81+00 SHEET 12 OF 13

MATCH LINE STA 81+00 SHEET 12 OF 13



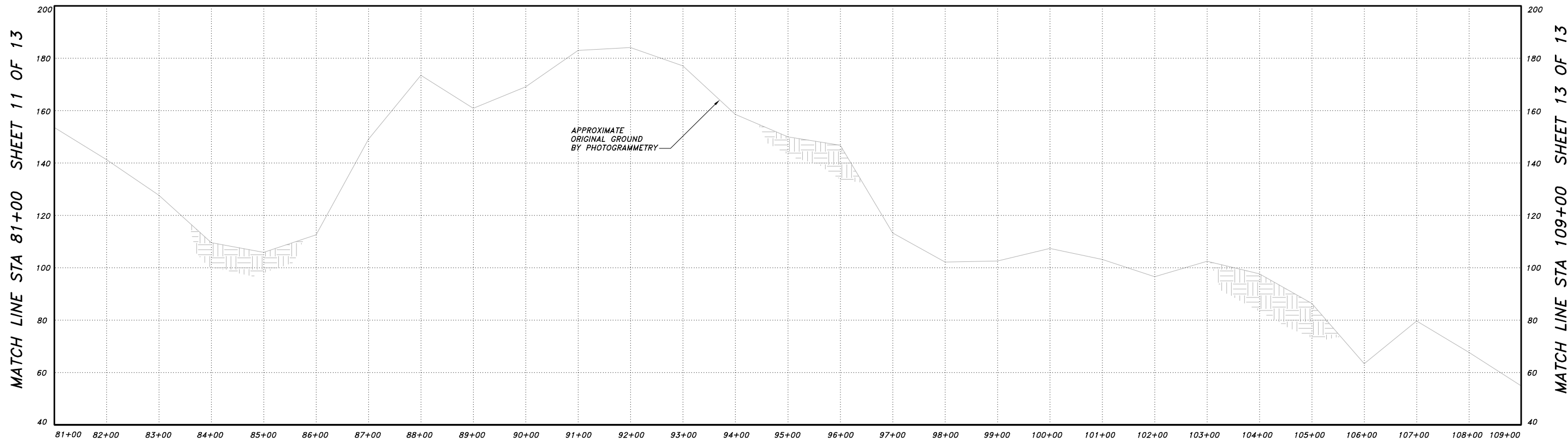
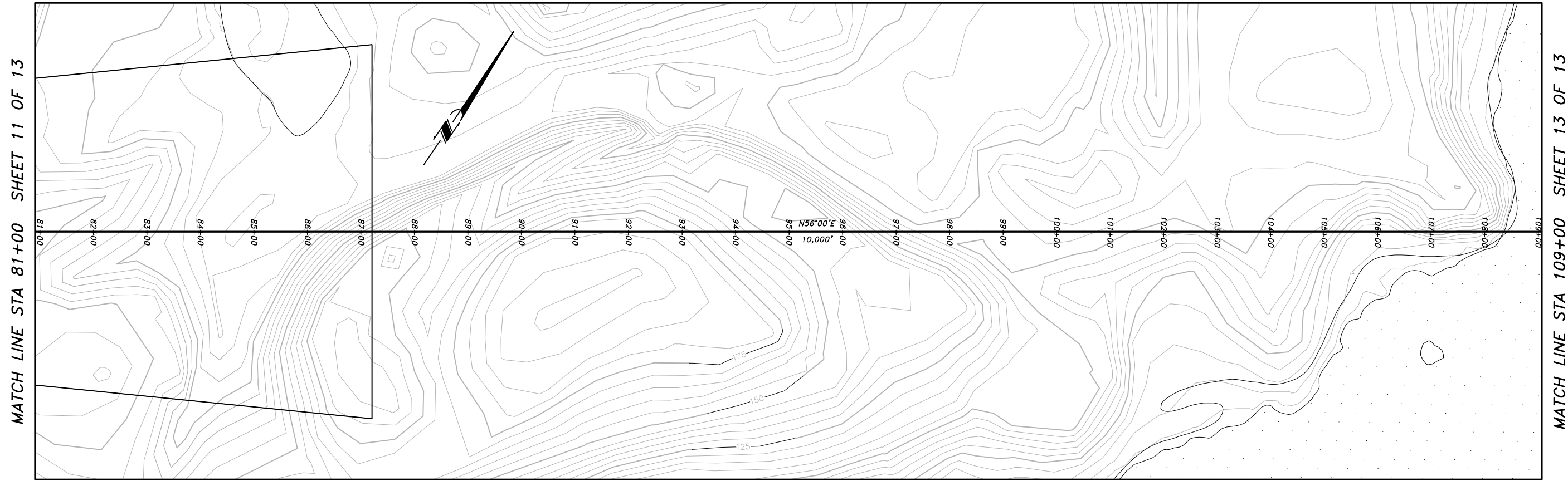
STATE OF ALASKA
DEPARTMENT OF TRANSPORTATION
AND PUBLIC FACILITIES

FIGURE 5.
AIRPORT PLAN & PROFILE
STATION 53+00 TO STATION 81+00
SHEET 11 OF 13



ANGOON AIRPORT
MASTER PLAN

A:\2004\041404\Master Plan Figures\Fig 5_Airstrip.dwg PLOT: May 25, 2006 at: 4:26pm



STATE OF ALASKA
DEPARTMENT OF TRANSPORTATION
AND PUBLIC FACILITIES

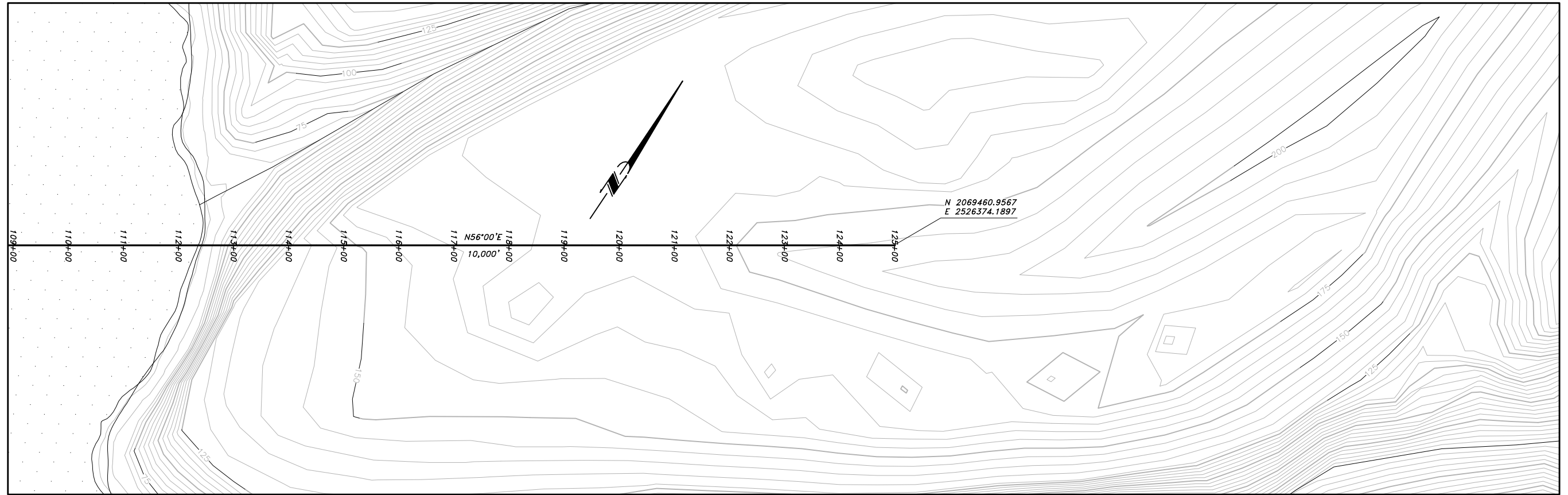
FIGURE 5.
AIRPORT PLAN & PROFILE
STATION 81+00 TO STATION 109+00
SHEET 12 OF 13



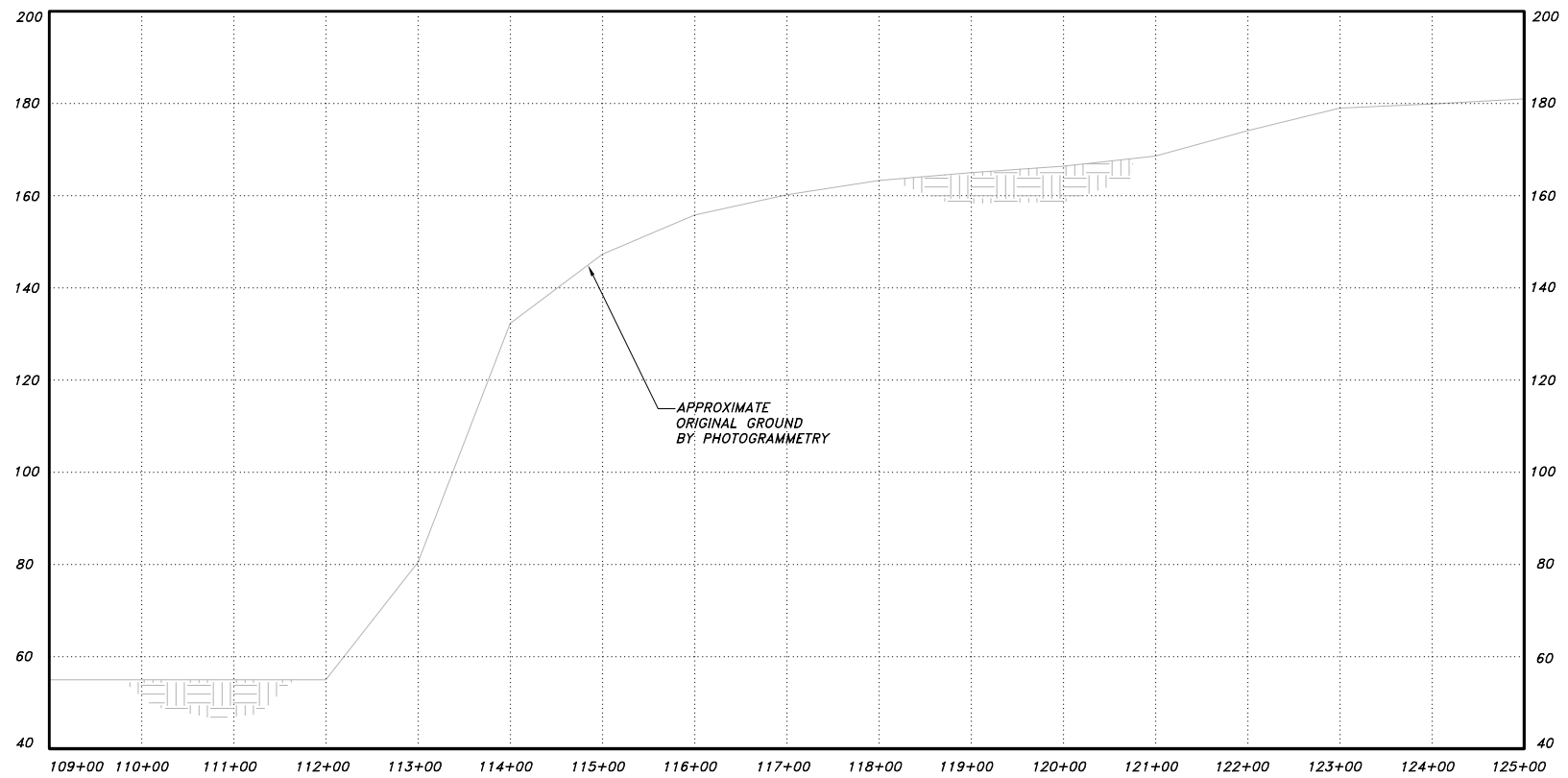
ANGOON AIRPORT
MASTER PLAN

A:\2004\041404\Master Plan Figures\PRP - A\airpfp.dwg PLOT: May 25, 2006 at: 4:26pm

MATCH LINE STA 109+00 SHEET 12 OF 13



MATCH LINE STA 109+00 SHEET 12 OF 13



STATE OF ALASKA
DEPARTMENT OF TRANSPORTATION
AND PUBLIC FACILITIES

FIGURE 5.
AIRPORT PLAN & PROFILE
STATION 109+00 TO STATION 125+00
SHEET 13 OF 13



ANGOON AIRPORT
MASTER PLAN