

Mineral Terranes of Alaska

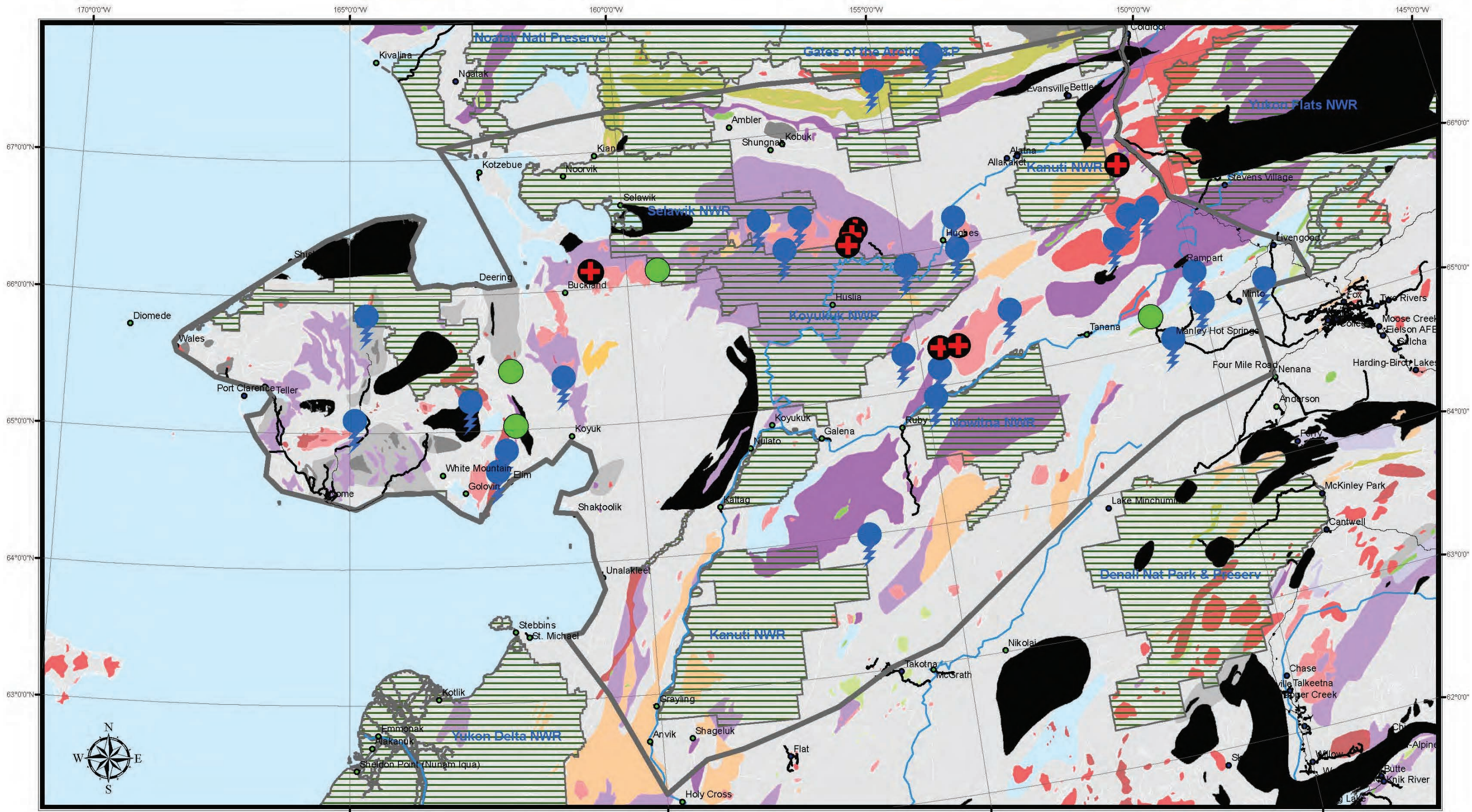
IGA	IGF	IGI	IGU	IMA	IUM	VFU	VFA	VSF	VMU	VFI	SCB	SLU	SCG	SPS	VOP	VSM	SGS	SCH	SBS	SLS
-----	-----	-----	-----	-----	-----	-----	-----	-----	-----	-----	-----	-----	-----	-----	-----	-----	-----	-----	-----	-----






Project Boundary (thick grey line)

Mineral Deposits (green circle)

Geologic and Geophysical Data Areas (dark blue area)

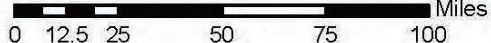
Scale: 0 12.5 25 50 75 100 Miles

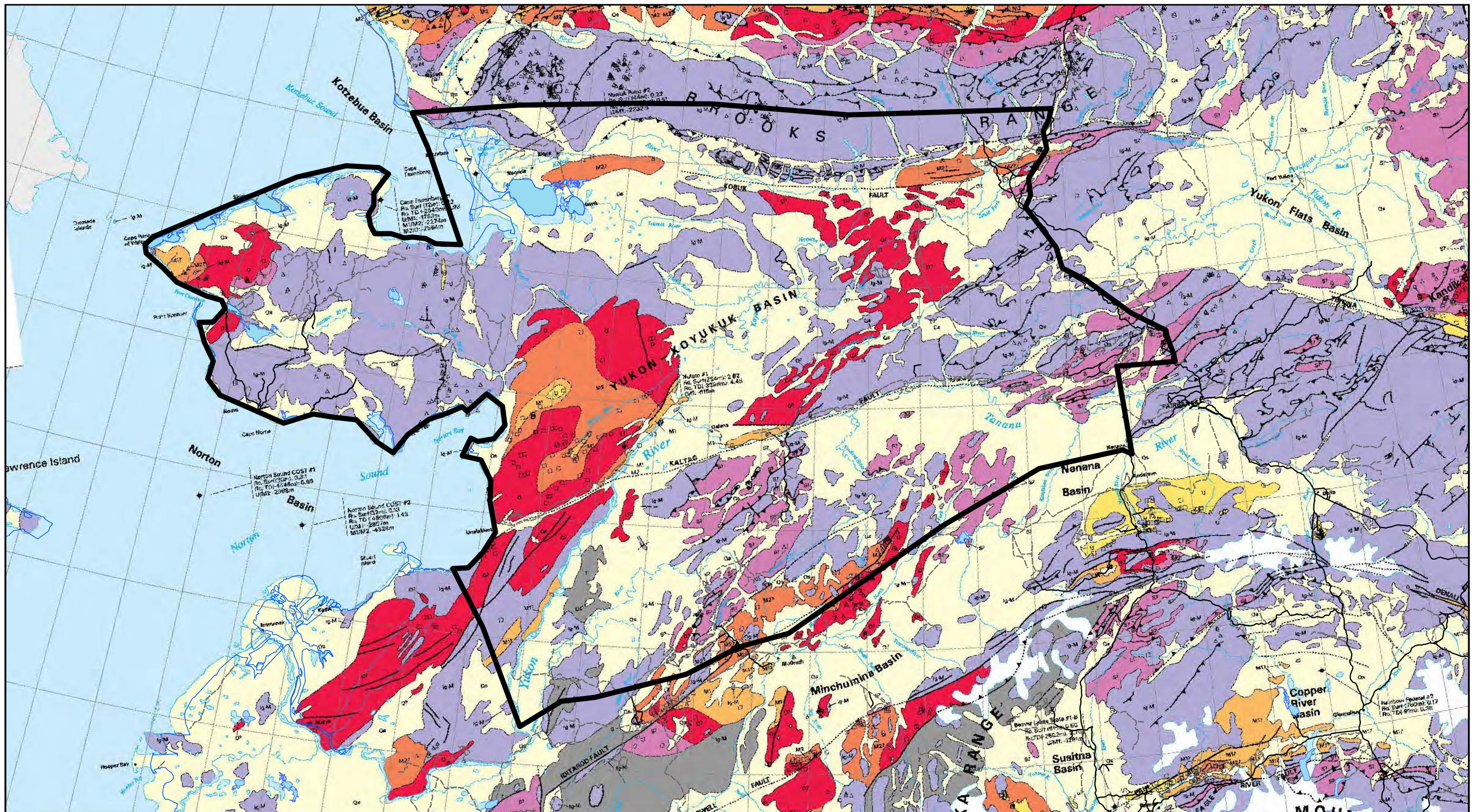


 Thermal Springs
  SCB
  SSU
  PoU
  Project Boundary

Mineral Terranes of Alaska

IGA	IGF	IGI	IGU	IMA	IUM	VFU	VFA	VSF	VMU
VFI	SCB	SLU	SCG	SPS	VOP	VSM	SGS	SCH	SBS
SLS									

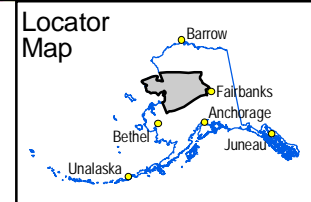
 Miles
 0 12.5 25 50 75 100



- Towns
- Study Area
- Undermature
- Mature I
- Mature II
- Overmature
- Supermature
- Igneous-Metamorphic
- No data
- Quaternary sediments

- Track, Trails or Footpaths
- Other
- Highway
- Primary or Secondary Road

- Major Lakes
- Major Rivers

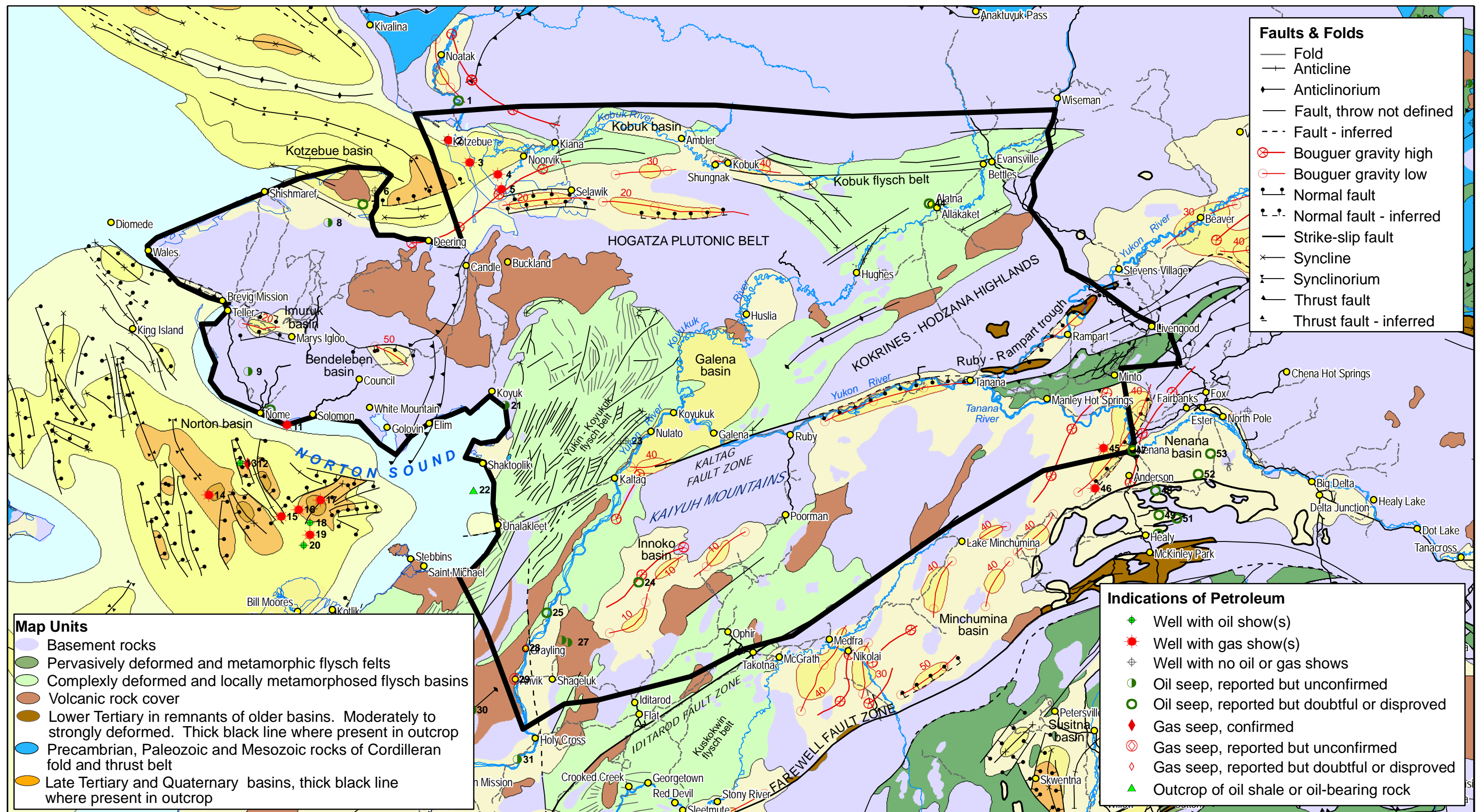


STATE OF ALASKA
 Department of Transportation and Public Facilities
 NORTHERN REGION PLANNING GROUP
 2301 Peger Rd. Fairbanks, AK 99709

WESTERN ALASKA ACCESS PLANNING STUDY
 GENERALIZED THERMAL MATURITY MAP

SCALE: 0 12.5 25 Miles DESIGNED: Allied GIS

c:\DOW\GIS\13 gis datasets\mxd\NEL_thermal_maturity_interim_11x17L.mxd DATE: March 26, 2009 SHEET: 1 of 1



Faults & Folds

- Fold
- Anticline
- Anticlinorium
- Fault, throw not defined
- - - Fault - inferred
- ⊗ Bouguer gravity high
- ⊙ Bouguer gravity low
- ↯ Normal fault
- ↯ Normal fault - inferred
- Strike-slip fault
- × Syncline
- ↯ Synclinorium
- ↯ Thrust fault
- ↯ Thrust fault - inferred

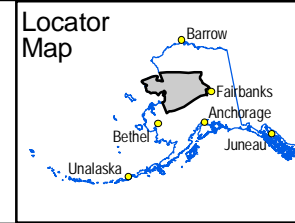
Map Units

- Basement rocks
- Pervasively deformed and metamorphic flysch felts
- Complexly deformed and locally metamorphosed flysch basins
- Volcanic rock cover
- Lower Tertiary in remnants of older basins. Moderately to strongly deformed. Thick black line where present in outcrop
- Precambrian, Paleozoic and Mesozoic rocks of Cordilleran fold and thrust belt
- Late Tertiary and Quaternary basins, thick black line where present in outcrop

Indications of Petroleum

- Well with oil show(s)
- Well with gas show(s)
- Well with no oil or gas shows
- Oil seep, reported but unconfirmed
- Oil seep, reported but doubtful or disproved
- Gas seep, confirmed
- Gas seep, reported but unconfirmed
- Gas seep, reported but doubtful or disproved
- Outcrop of oil shale or oil-bearing rock

- Towns
- Study Area
- Thickness of Cenozoic basin fill
 - 0.1 - 1.0 km
 - 1.0 - 3.0 km
 - 3.0 - 5.0 km
 - 5.0 - 15 km
- Primary or Secondary Road
- - - Track, Trails or Footpaths
- Other
- Highway
- Major Rivers
- Major Lakes

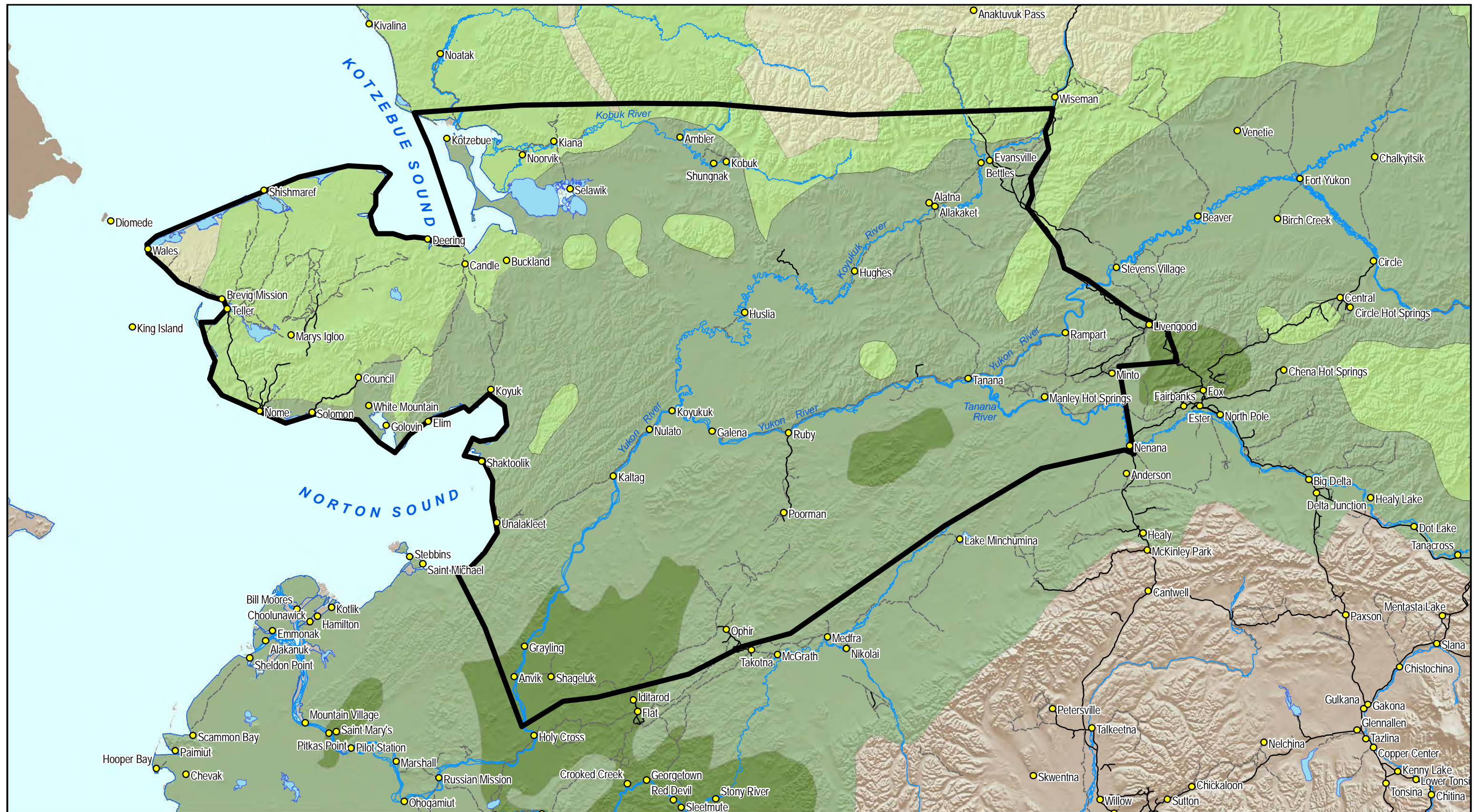


STATE OF ALASKA
 Department of Transportation and Public Facilities
 NORTHERN REGION PLANNING GROUP
 2301 Peger Rd. Fairbanks, AK 99709

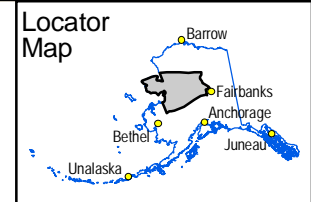
WESTERN ALASKA ACCESS PLANNING STUDY
 SEDIMENTARY BASINS

SCALE: 0 12.5 25 Miles
 DESIGNED: Allied GIS

DATE: March 26, 2009
 SHEET: 1 of 1



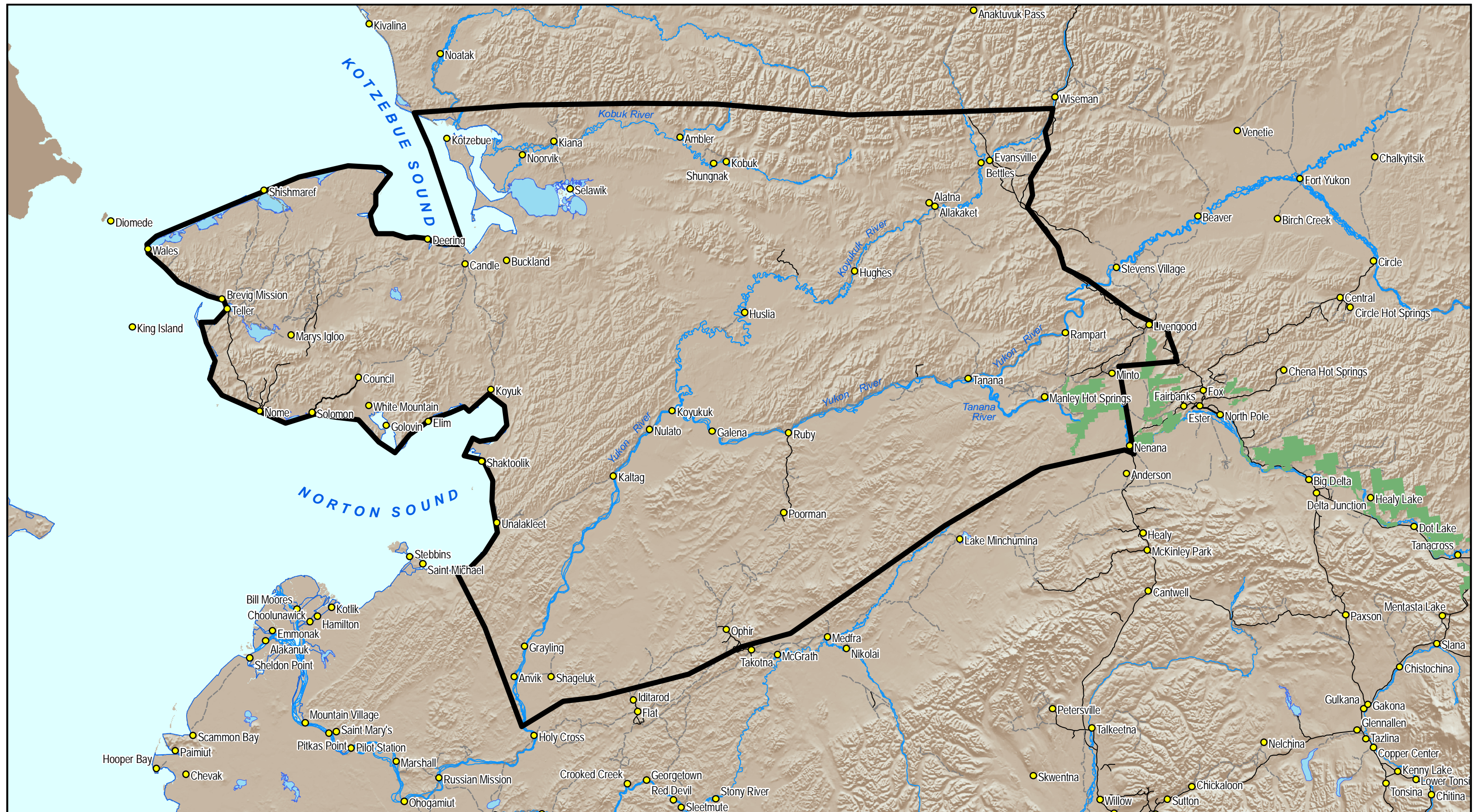
- Towns
- Study Area
- 70 or Less Growing Days
- 70 - 100 Growing Days
- 100 - 130 Growing Days
- 130 - 160 Growing Days
- Highway
- Primary or Secondary Road
- Track, Trails or Footpaths
- Other
- Major Lakes
- Major Rivers



STATE OF ALASKA
 Department of Transportation and Public Facilities
 NORTHERN REGION PLANNING GROUP
 2301 Peger Rd. Fairbanks, AK 99709

WESTERN ALASKA ACCESS PLANNING STUDY
 GROWING DAYS OF ALASKA

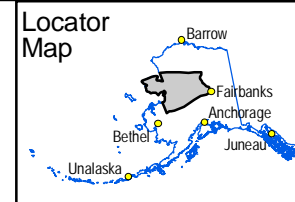
SCALE: 0 12.5 25 Miles
 DESIGNED: Allied GIS
 c:\DOW\GIS\13 gis datasets\mxd\NEL_commercial_growing_seasons_11x17-L.mxd
 DATE: March 19, 2009 SHEET: 1 of 1



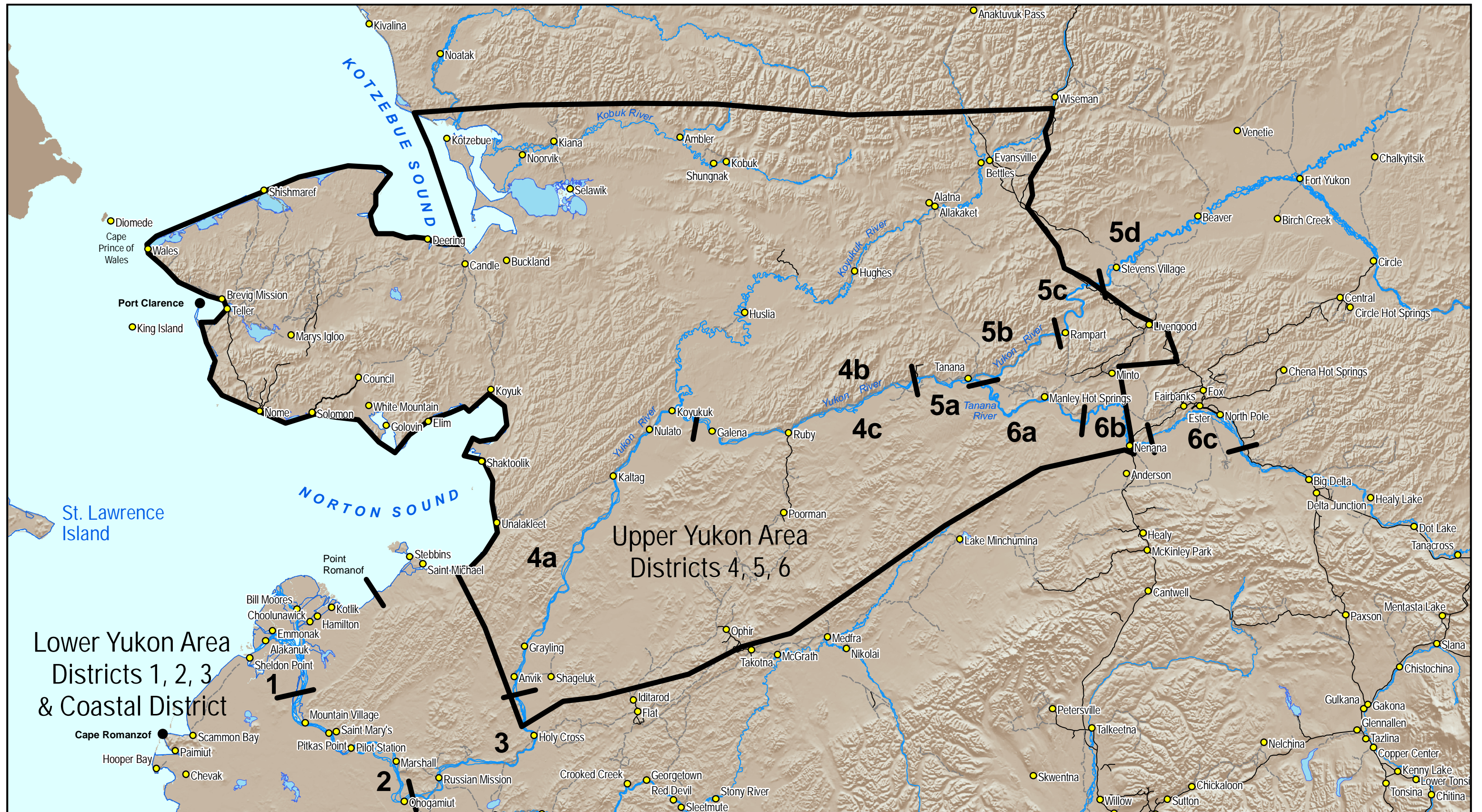
- Towns
- Study Area
- Tanana Valley State Forest

- Highway
- Primary or Secondary Road
- Track, Trails or Footpaths

- Other
- Major Lakes
- Major Rivers



STATE OF ALASKA Department of Transportation and Public Facilities NORTHERN REGION PLANNING GROUP 2301 Peger Rd. Fairbanks, AK 99709	
WESTERN ALASKA ACCESS PLANNING STUDY TANANA VALLEY STATE FOREST	
SCALE: 0 12.5 25 Miles	DESIGNED: Allied GIS
c:\DOW\GIS\13 gis datasets\mxd\NEI\tanana_valley_forest_11x17-L.mxd	
DATE: March 19, 2009	SHEET: 1 of 1



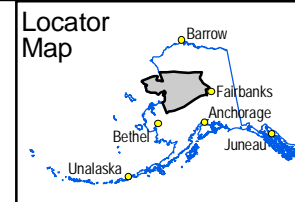
**Lower Yukon Area
Districts 1, 2, 3
& Coastal District**

**Upper Yukon Area
Districts 4, 5, 6**

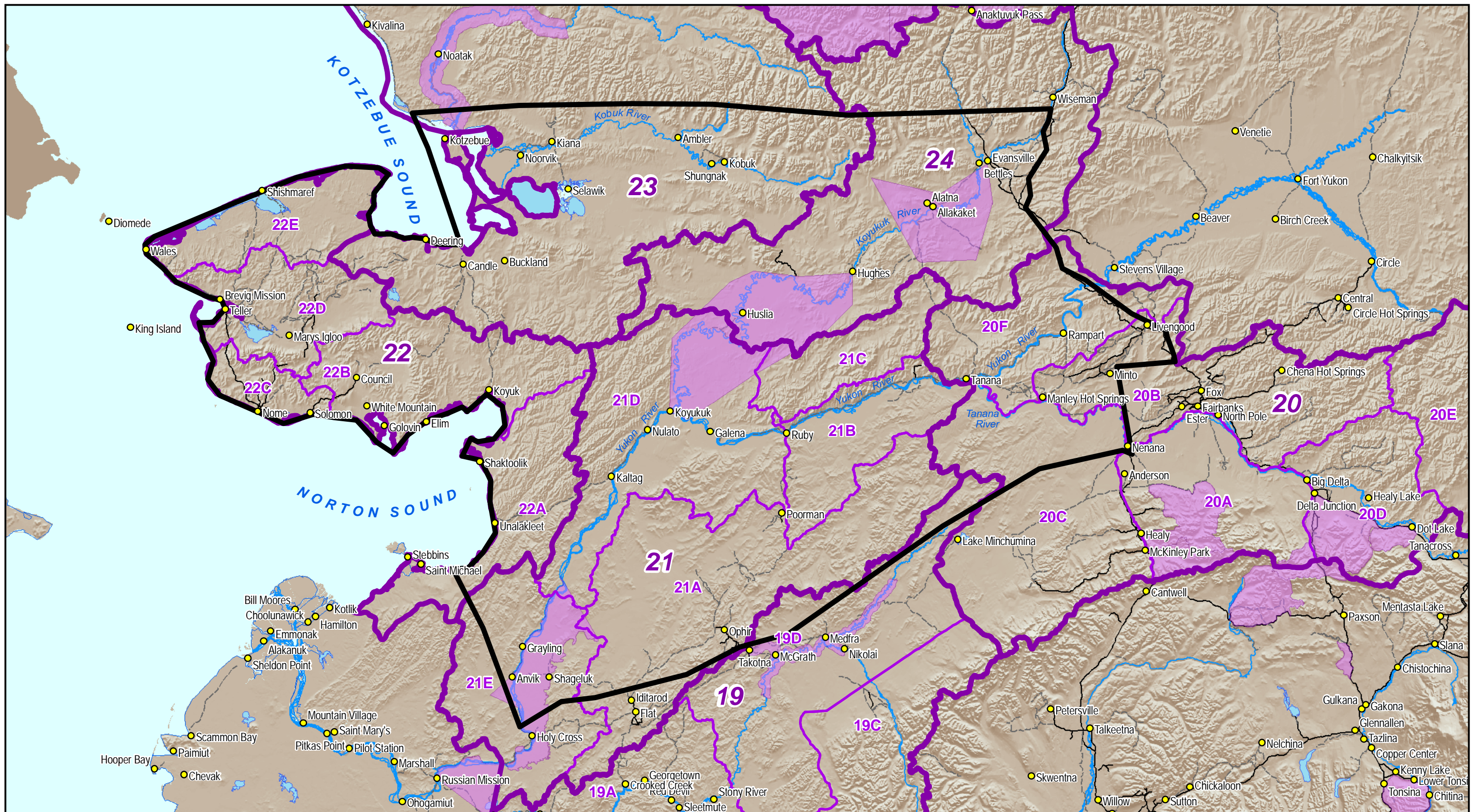
- Towns
- Study Area
- Fisheries Management Boundary

- Highway
- Primary or Secondary Road
- Track, Trails or Footpaths

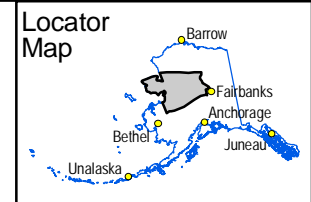
- Other
- Major Lakes
- Major Rivers



STATE OF ALASKA	
Department of Transportation and Public Facilities NORTHERN REGION PLANNING GROUP 2301 Peger Rd. Fairbanks, AK 99709	
WESTERN ALASKA ACCESS PLANNING STUDY FISHERIES MANAGEMENT	
SCALE: 0 12.5 25 Miles	DESIGNED: Allied GIS
DATE: March 19, 2009	SHEET: 1 of 1



- Towns
- Game Management Sub-Units
- Controlled Use Areas
- Primary or Secondary Road
- Track, Trails or Footpaths
- Other
- Study Area
- Game Management Units
- Highway
- Major Lakes
- Major Rivers



STATE OF ALASKA
 Department of Transportation and Public Facilities
 NORTHERN REGION PLANNING GROUP
 2301 Peger Rd. Fairbanks, AK 99709

NORTHWEST REGIONAL PLANNING STUDY
 GAME MANAGEMENT UNITS

SCALE: 0 12.5 25 Miles DESIGNED: Allied GIS
 c:\DOW\GIS\13 gis datasets\mxd\NEL_GMU_11x17-L.mxd
 DATE: March 19, 2009 SHEET: 1 of 1