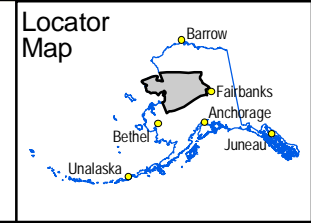


- Towns
- Study Area
- Interest Area
- Native Management
- BLM
- Military
- NPS
- USFWS
- Private or Municipal Management
- State & Native Management
- State Management
- Wild & Scenic Rivers
- Highway
- Primary or Secondary Road
- Track, Trails or Footpaths
- Other
- Major Lakes
- Major Rivers

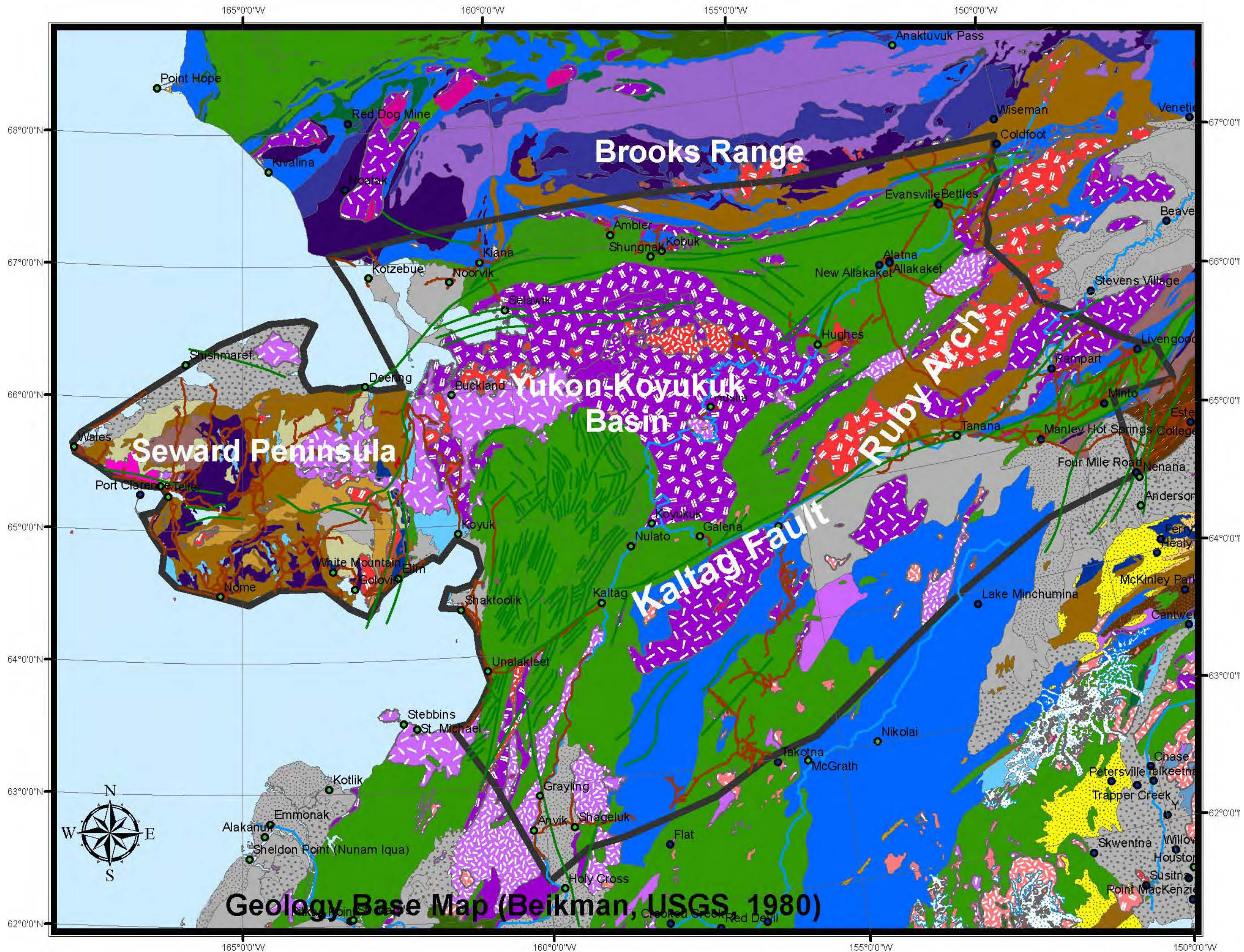


STATE OF ALASKA  
Department of Transportation and Public Facilities  
NORTHERN REGION PLANNING GROUP  
2301 Peger Rd. Fairbanks, AK 99709

WESTERN ALASKA ACCESS PLANNING STUDY  
GENERAL CORRIDOR MAP

SCALE: 0 12.5 25 Miles	DESIGNED: Allied GIS
D:\DOW\GIS\13 gis datasets\mxd\McKinnon_Landstatus_AFN_11x17-L2.mxd	
DATE: March 20, 2009	SHEET: 1 of 1







## Granitic Rocks

- IGA Alkalic Granitic Rocks
- IGF Felsic Granitic Rocks
- IGI Intermediate Granitic Rocks
- IGU Undivided Granitic Rocks

## Volcanic Rocks

- VFU Undivided Felsic Volcanics
- VFA Alkalic Felsic Volcanics
- VSF Undivided Felsic Volcanic Rocks and Sedimentary Rocks
- VFI Intermediate Felsic Rocks

## Marine Sedimentary Rocks

- SLS Limestone and Shale
- SBS Carbonaceous Sedimentary Rocks
- SPS Chert
- SCH Phosphatic Shale

## Dark Colored Igneous Rocks

- IMA Mafic Igneous Rocks
- IUM Ultramafic Igneous Rocks

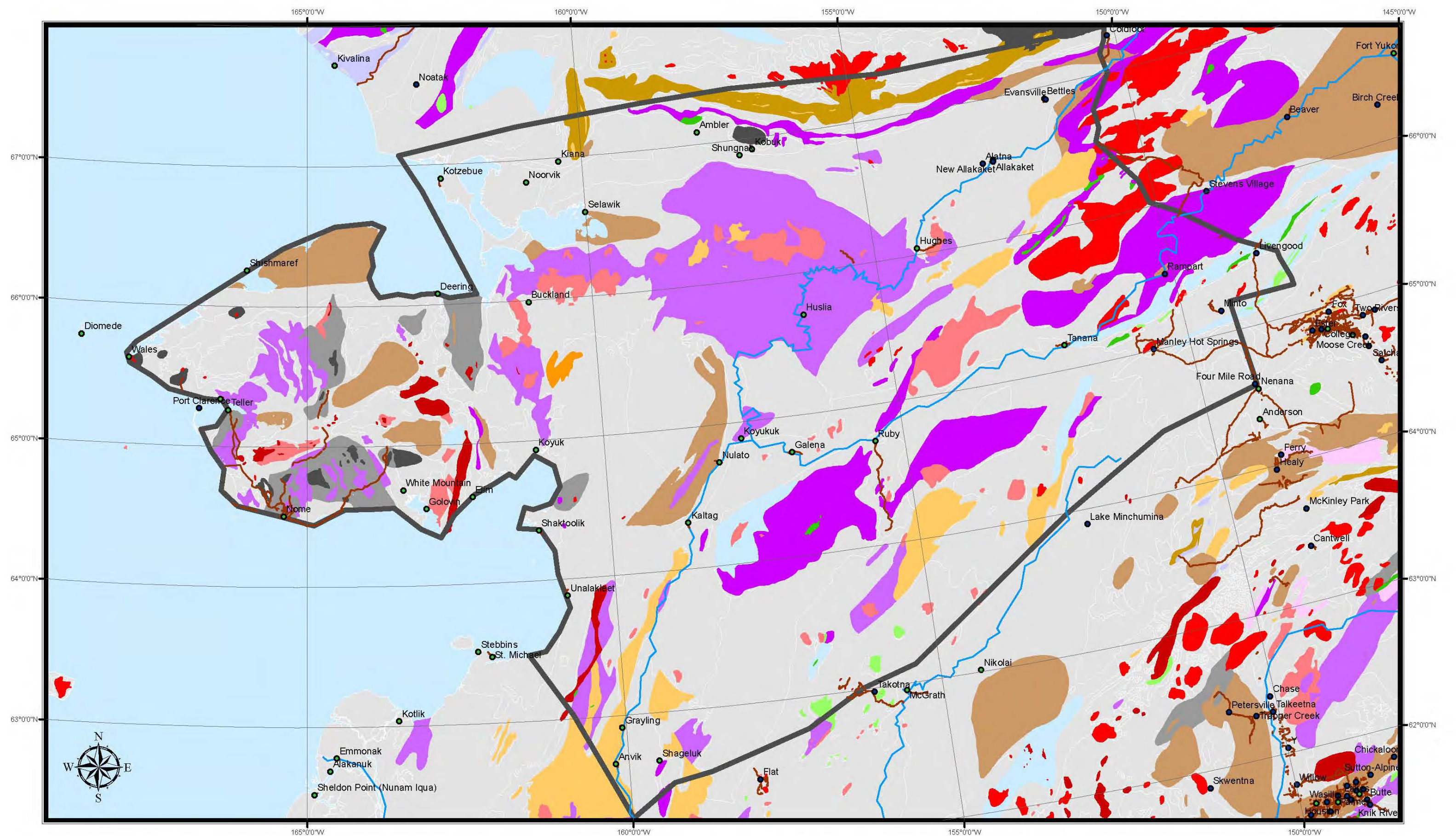
## Dark Colored Mafic Volcanic Rocks

- VMU Undivided Mafic Volcanics
- VSM Undivided Sediments and Mafic Volcanics
- VOP Ophiolitic Rocks

## Continental and Transitional Sedimentary Rocks

- SCG Conglomerate and Sedimentary Rocks
- SGS Graywackie Argillite
- SLU Limy Rocks
- SCB Coal Bearing Sedimentary Rocks



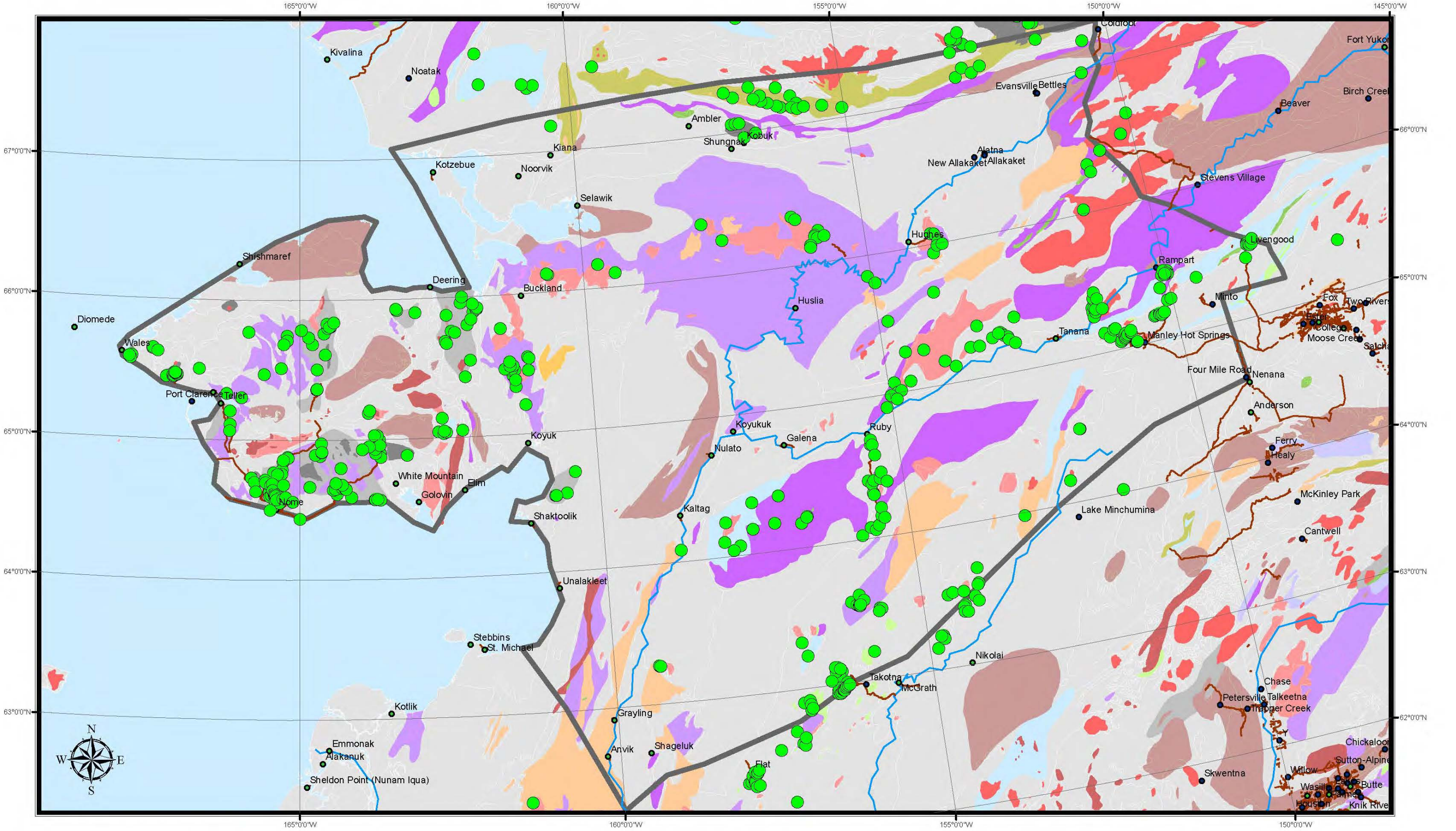


**Mineral Terranes of Alaska**

IGA	IGF	IGI	IGU	IMA	IUM	VFU	VFA	VSF	VMU	VFI	SCB	SLU	SCG	SPS	VOP	VSM	SGS	SCH	SBS	SLS
-----	-----	-----	-----	-----	-----	-----	-----	-----	-----	-----	-----	-----	-----	-----	-----	-----	-----	-----	-----	-----

**Project Boundary** **Mineral Deposits**



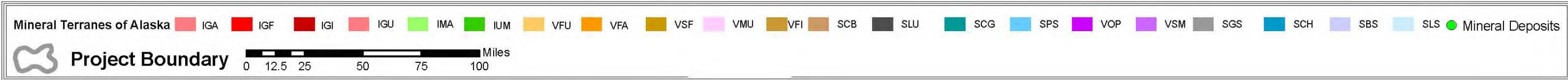
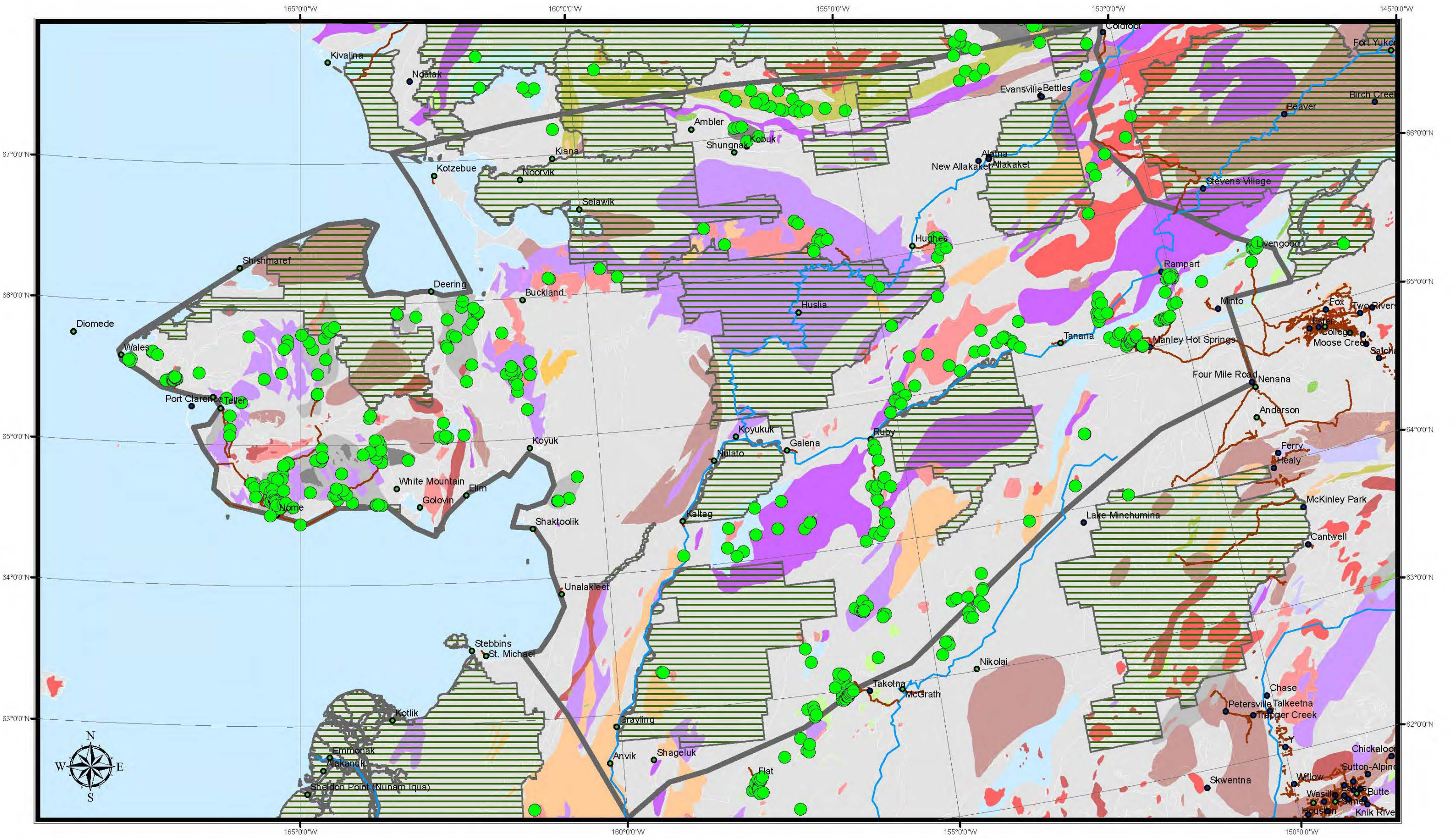


**Mineral Terranes of Alaska** IGA IGF IGI IGU IMA IUM VFU VFA VSF VMU VFI SCB SLU SCG SPS VOP VSM SGS SCH SBS SLS

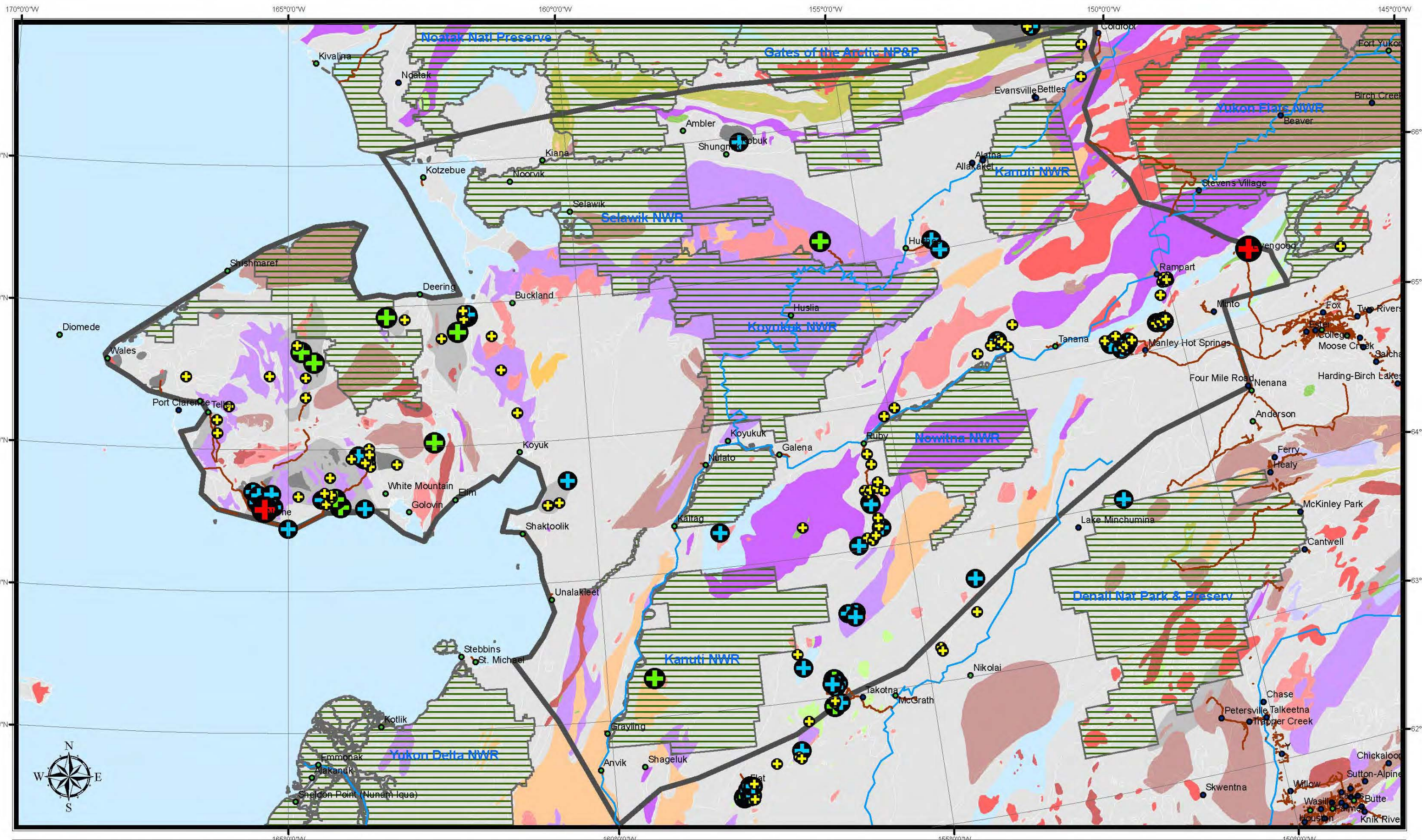
**Project Boundary** Miles

**Mineral Deposits**





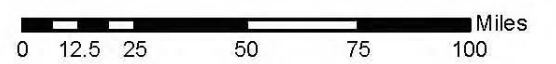




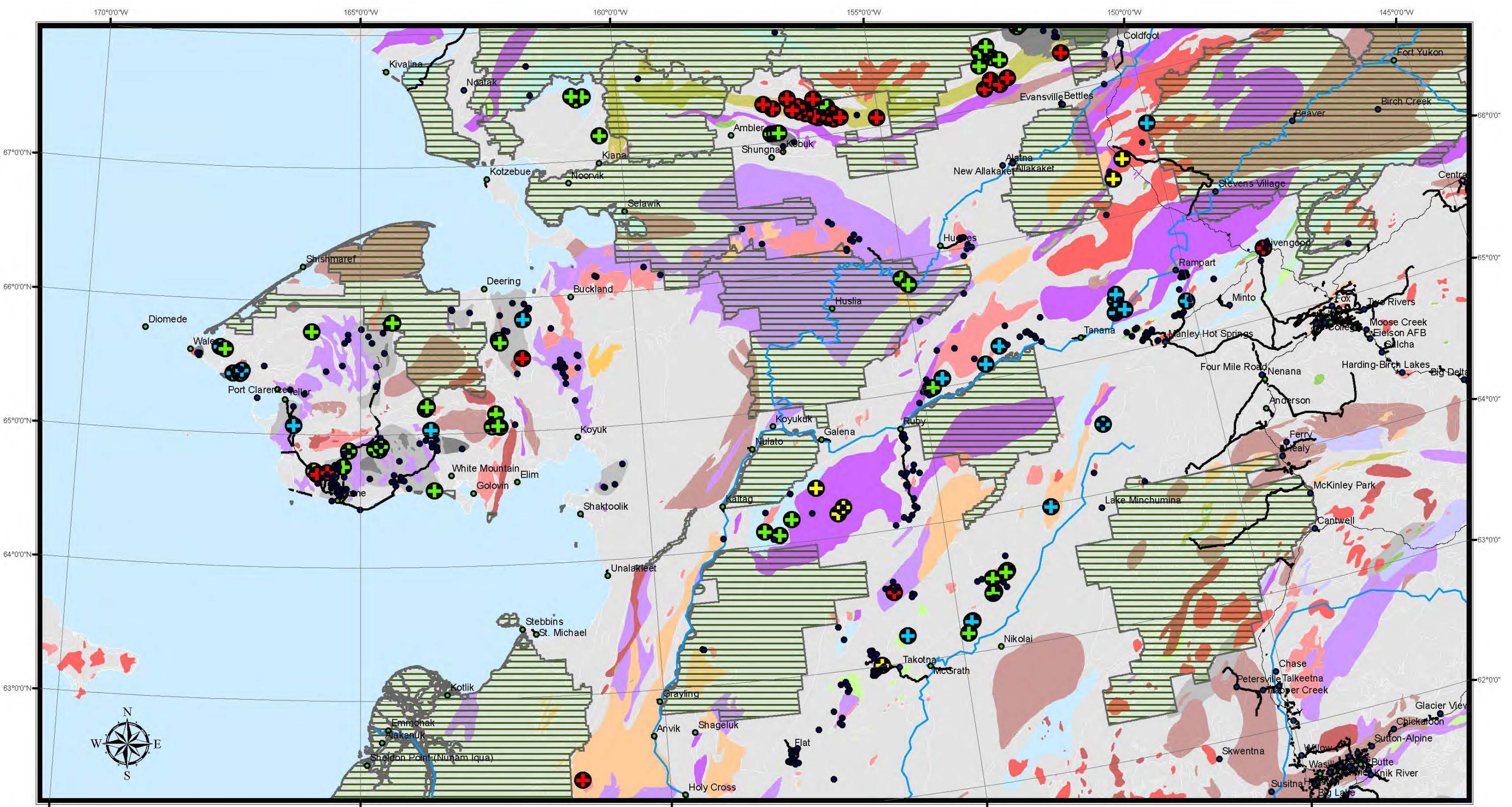
**Placer Deposits** + Very Large + Large + Medium + Small   Project Boundary

**Mineral Terranes of Alaska**

IGA	IGF	IGI	IGU	IMA	IUM	VFU	VFA	VSF	VMU
VFI	SCB	SLU	SCG	SPS	VOP	VSM	SGS	SCH	SBS
									SLS







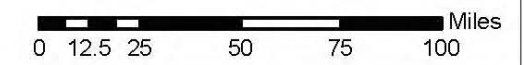
**High Density Types**

- + CRD
- + MUM
- + Skarn
- + VMS

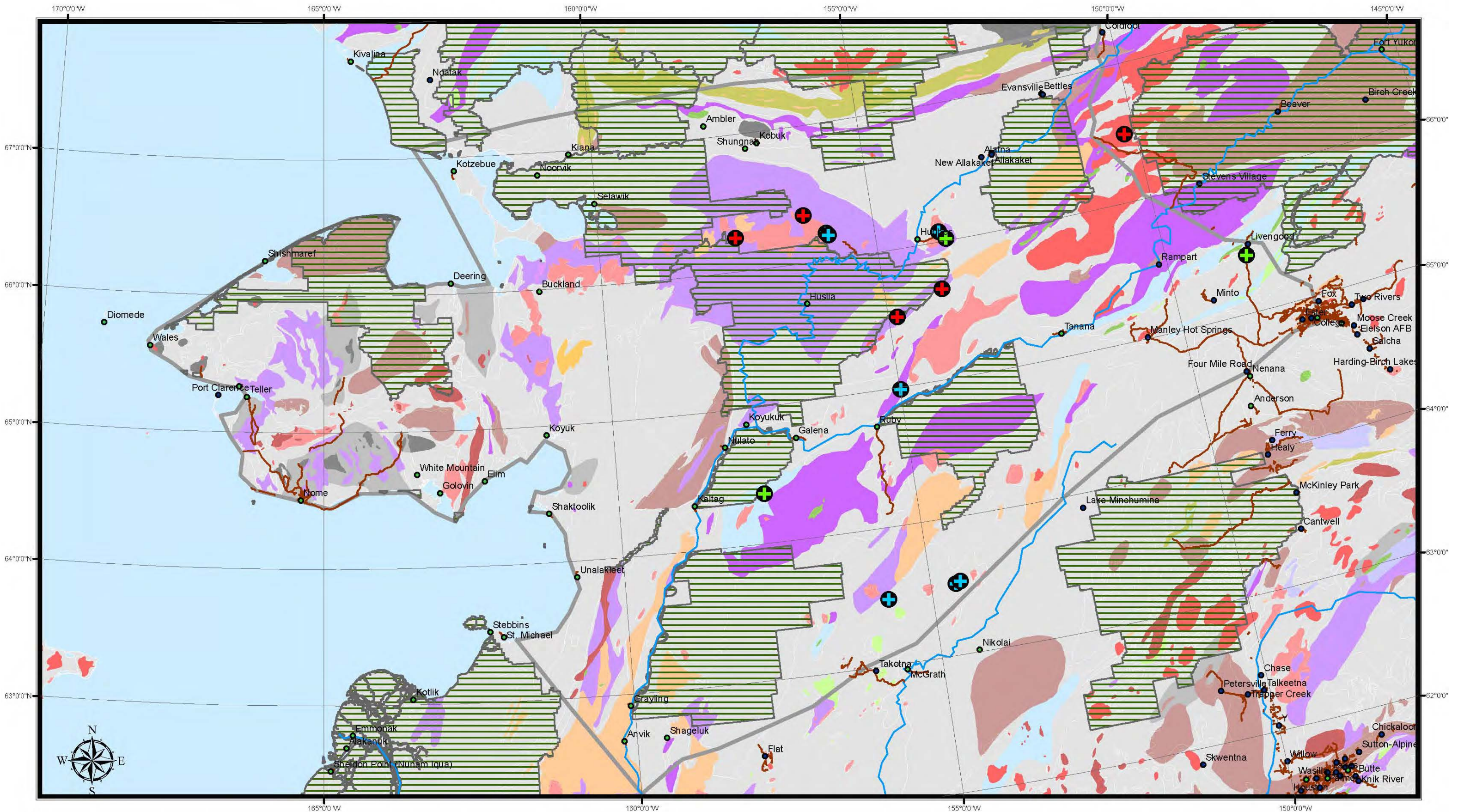
**Mineral Terranes of Alaska**

- |     |     |     |     |     |     |     |     |     |     |
|-----|-----|-----|-----|-----|-----|-----|-----|-----|-----|
| IGA | IGF | IGI | IGU | IMA | IUM | VFU | VFA | VSF | VMU |
| VFI | SCB | SLU | SCG | SPS | VOP | VSM | SGS | SCH | SBS |
|     |     |     |     |     |     |     |     |     | SLS |

**Project Boundary**



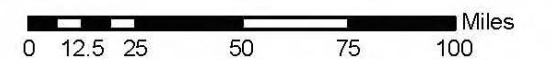




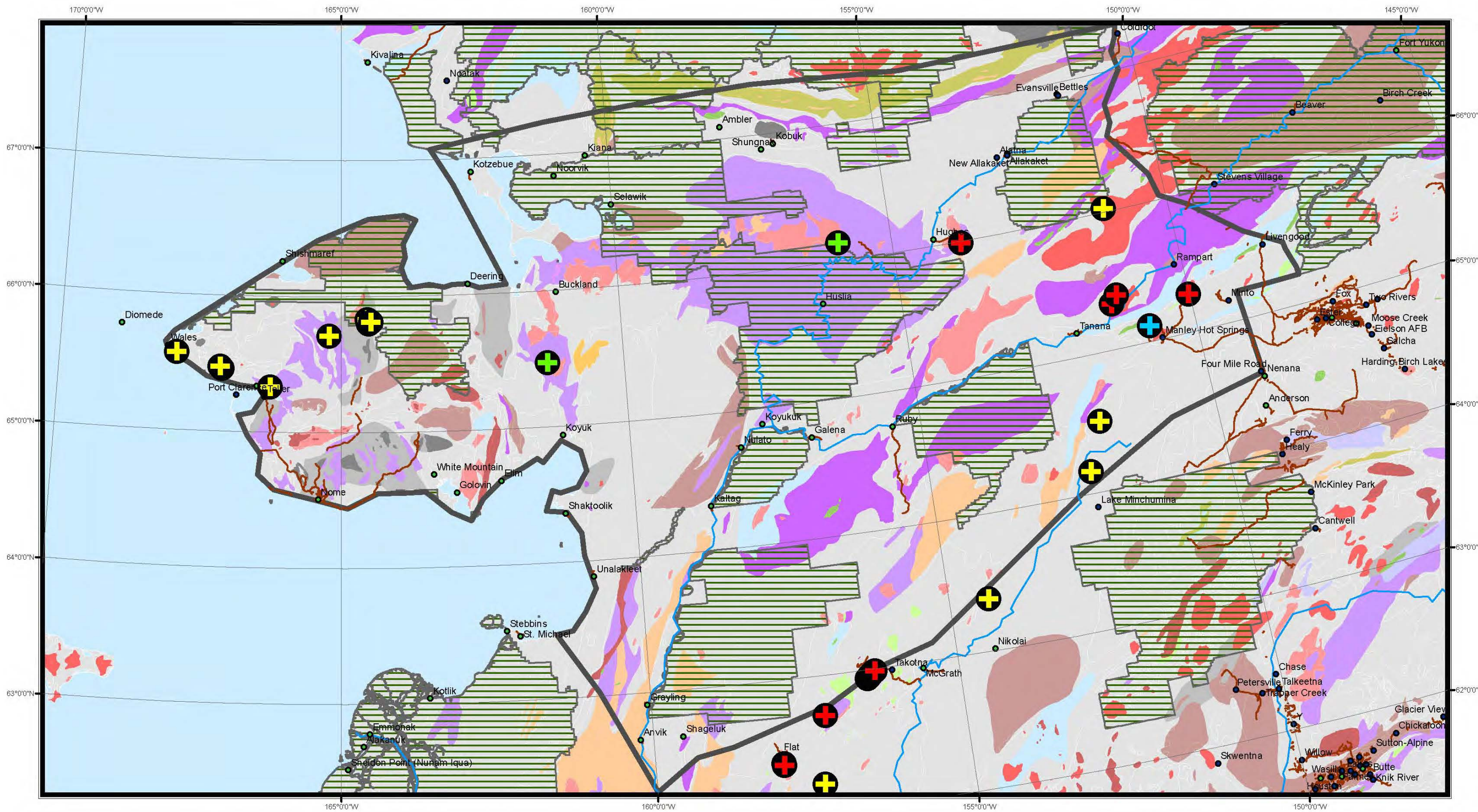
**Copper Type**    + PoCuMo    + PoCuAu    + PoCu    Project Boundary

**Mineral Terranes of Alaska**

- |  |     |  |     |  |     |  |     |  |     |  |     |  |     |  |     |  |     |  |     |  |     |
|--|-----|--|-----|--|-----|--|-----|--|-----|--|-----|--|-----|--|-----|--|-----|--|-----|--|-----|
|  | IGA |  | IGF |  | IGI |  | IGU |  | IMA |  | IUM |  | VFU |  | VFA |  | VSF |  | VMU |  |     |
|  | VFI |  | SCB |  | SLU |  | SCG |  | SPS |  | VOP |  | VSM |  | SGS |  | SCH |  | SBS |  | SLS |







**Other Porphyry Types**

- + PoW
- + PoCarb
- + PoAu
- + PoSn

**Mineral Terranes of Alaska**

- |  |  |  |  |  |  |  |  |  |  |  |
|--|--|--|--|--|--|--|--|--|--|--|
|  |  |  |  |  |  |  |  |  |  |  |
|  |  |  |  |  |  |  |  |  |  |  |

**Project Boundary**

