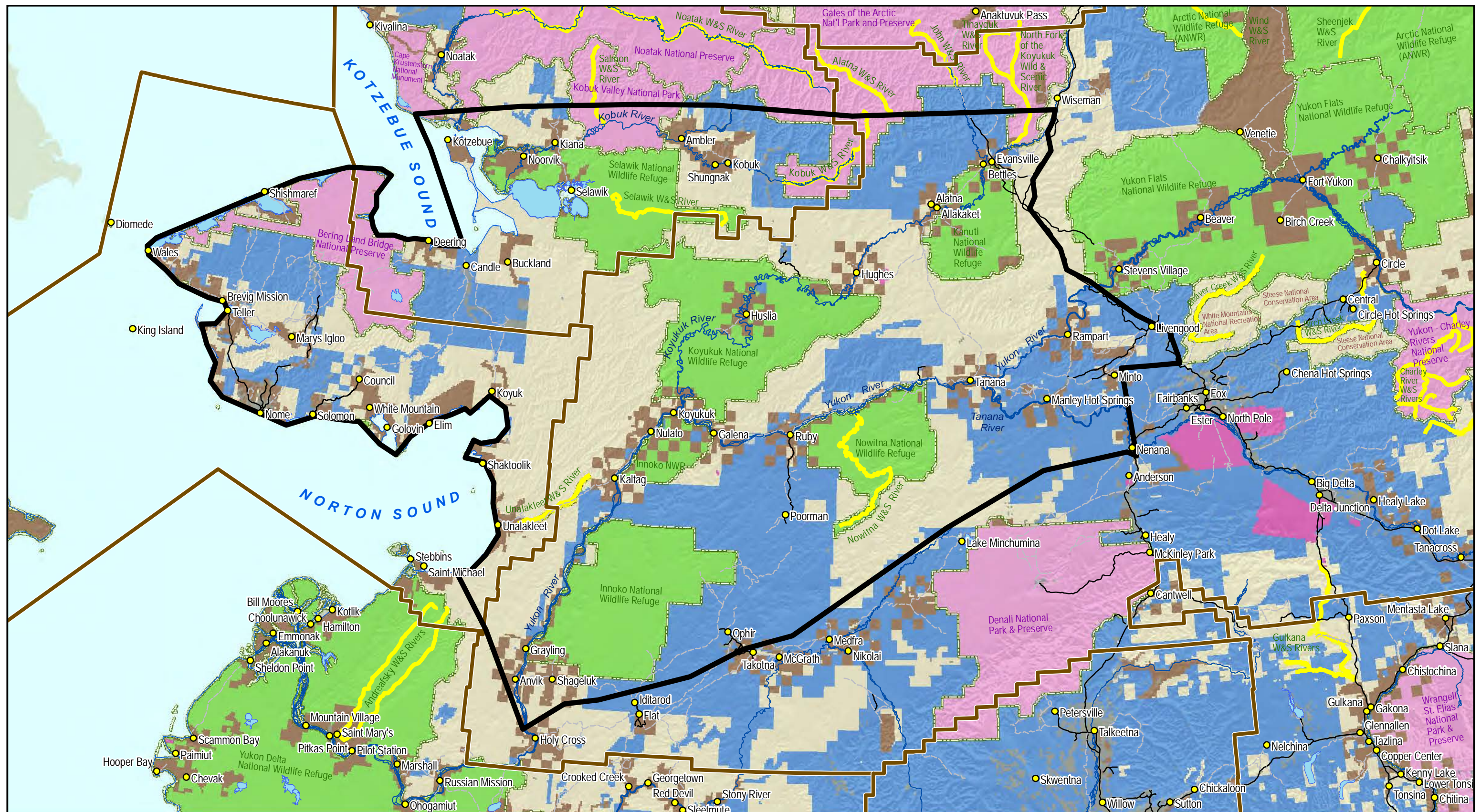


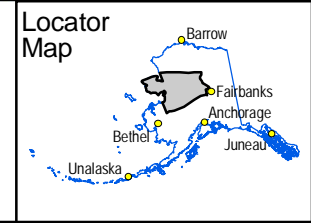
Appendix A - List of Maps

This appendix provides large (11x17) fold out maps of several of the maps that appear in the report. The maps are shown in the order they are presented in this appendix. For each map the table below gives the map name, and the location in the report that the smaller version of the map appears. Some maps appear in both the Summary Report and in one of the Appendices. In those cases, page numbers for both instances are noted.

Map Name	Document, Page	Appendix A Page #
Study Area Map	Summary Report, p. 2	2
Significant Occurrences and Mineral Terranes	Summary Report, p. 4 Appendix C, p. 32	3
National Parks, Monuments, Preserves, Wildlife Refuges and Wild and Scenic Rivers in the Study Area	Summary Report, p. 14 Appendix G, p. 5	4
Commercial Forestry Potential	Summary Report, p. 16 Appendix E, p. 5	5
Upland and Lowland Agricultural Soils	Summary Report, p. 18 Appendix E, p. 13	6
Wind Power Resource Potential	Summary Report, p. 20	7
Geothermal Energy Potential	Summary Report, p. 20	8
Hydropower Resource Potential	Summary Report, p. 21	9
Value of Community Economic Activity	Summary Report, p. 23	10
Refined Study Area Map	Summary Report, p. 28	11
Geology Base Map	Appendix C, p. 7	12
Explanation for Mineral Terrane Map	Appendix C, p. 8	13
Mineral Terrane Map	Appendix C, p. 9	14
Mineral Terranes and All Mineral Deposits	Appendix C, p. 10	15
Mineral Terranes and Federal Conservation Areas	Appendix C, p. 11	16
Placer occurrences	Appendix C, p. 12	17
Bulk Commodities (Cu-Pb-Zn) in VMS, CRD, and Skarn-type deposit	Appendix C, p. 18	18
Porphyry copper-type deposits	Appendix C, p. 19	19
Other porphyry types, including gold, molybdenum, uranium, and tin	Appendix C, p. 21	20
Geologic and Geophysical Data Gap	Appendix C, p. 28	21
Energy Summary	Appendix C, p. 29	22
Thermal Maturity Map of Central Alaska	Appendix D, p. 4	23
Reported Oil and Gas Shows in the Study Area	Appendix D, p. 5	24
Growing Season Days	Appendix E, p. 7	25
Tanana Valley State Forest	Appendix E, p. 28	26
Fishery Management Areas in the Study Area	Appendix F, p. 2	27
Game Management Units and Controlled Use Areas in the Study Area	Appendix G, p. 10	28



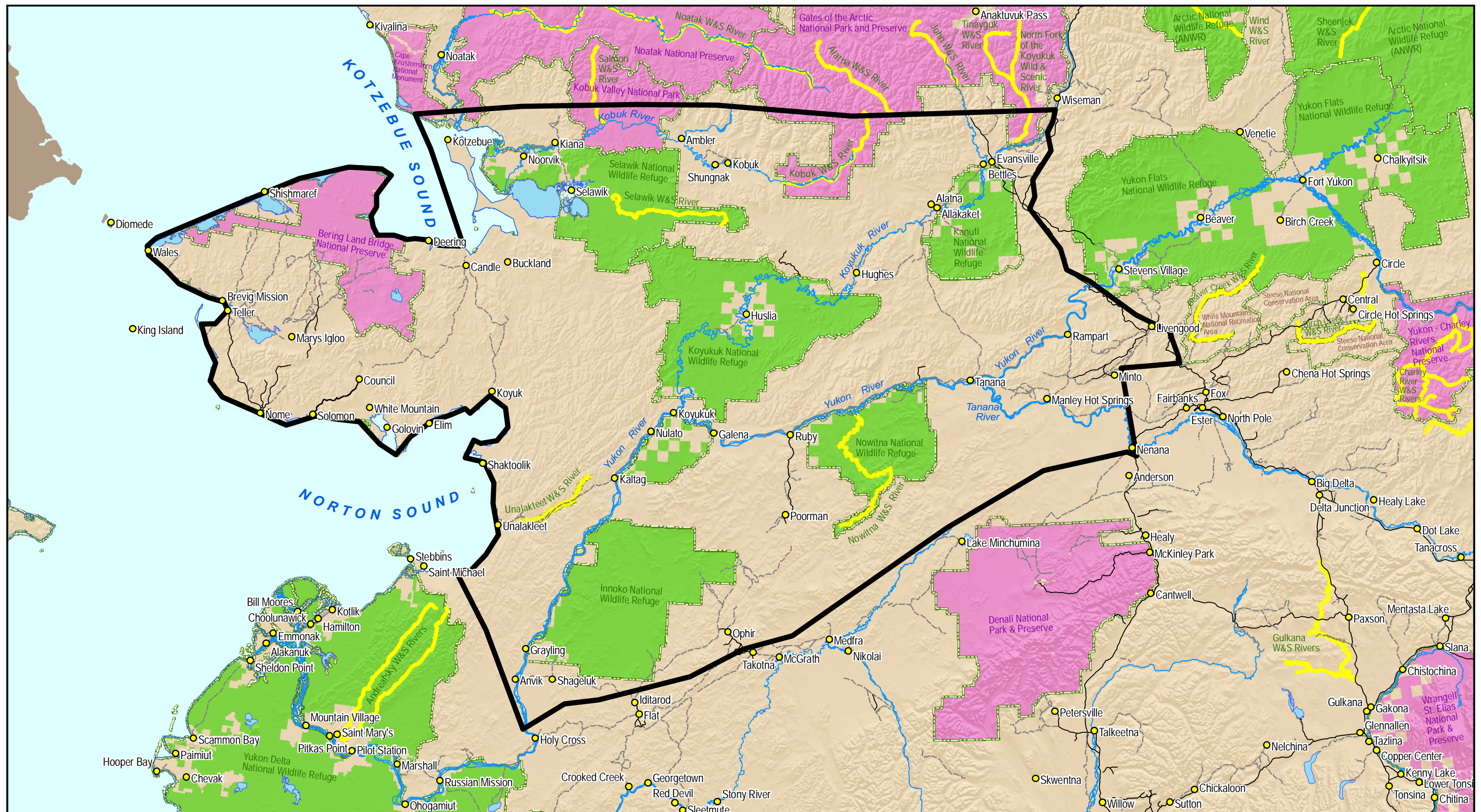
- Towns
- Study Area
- Native Corporation Bndry
- BLM
- Military
- NPS
- USFWS
- Private or Municipal Management
- State & Native Management
- State Management
- Wild & Scenic Rivers
- Highway
- Primary or Secondary Road
- Track, Trails or Footpaths
- Other
- Major Lakes
- Major Rivers



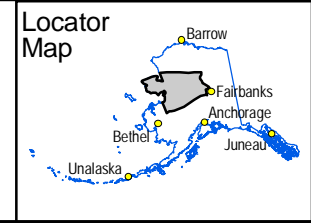
STATE OF ALASKA
 Department of Transportation and Public Facilities
 NORTHERN REGION PLANNING GROUP
 2301 Peger Rd. Fairbanks, AK 99709

WESTERN ALASKA ACCESS PLANNING STUDY
 GENERAL CORRIDOR MAP

SCALE: 0 12.5 25 Miles
 DESIGNED: Allied GIS
 DATE: March 20, 2009 SHEET: 1 of 1



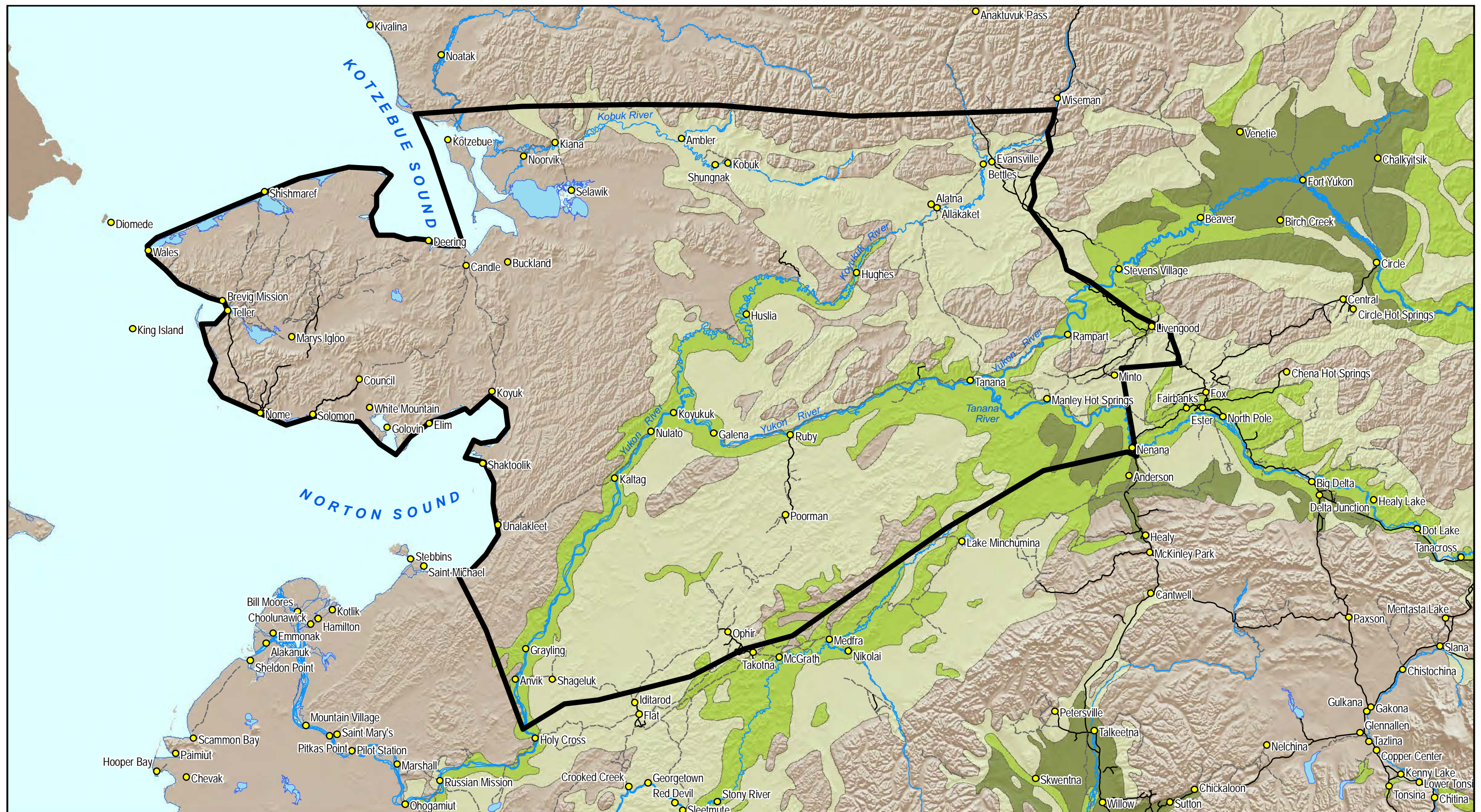
● Towns	● USFWS	— Primary or Secondary Road	● Major Lakes
○ Study Area	● Wild & Scenic Rivers	- - - Track, Trails or Footpaths	— Major Rivers
● NPS	— Highway	— Other	



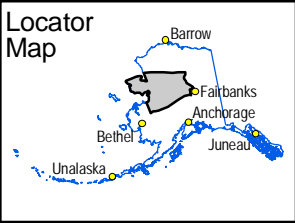
STATE OF ALASKA
 Department of Transportation and Public Facilities
 NORTHERN REGION PLANNING GROUP
 2301 Peger Rd. Fairbanks, AK 99709

WESTERN ALASKA ACCESS PLANNING STUDY
 RECREATION AREA MAP

SCALE: 0 12.5 25 Miles
 DESIGNED: Allied GIS
 c:\DOW\GIS\13 gis datasets\mxd\NEI_landstatus_RecMap_11x17-L.mxd
 DATE: March 20, 2009 SHEET: 1 of 1



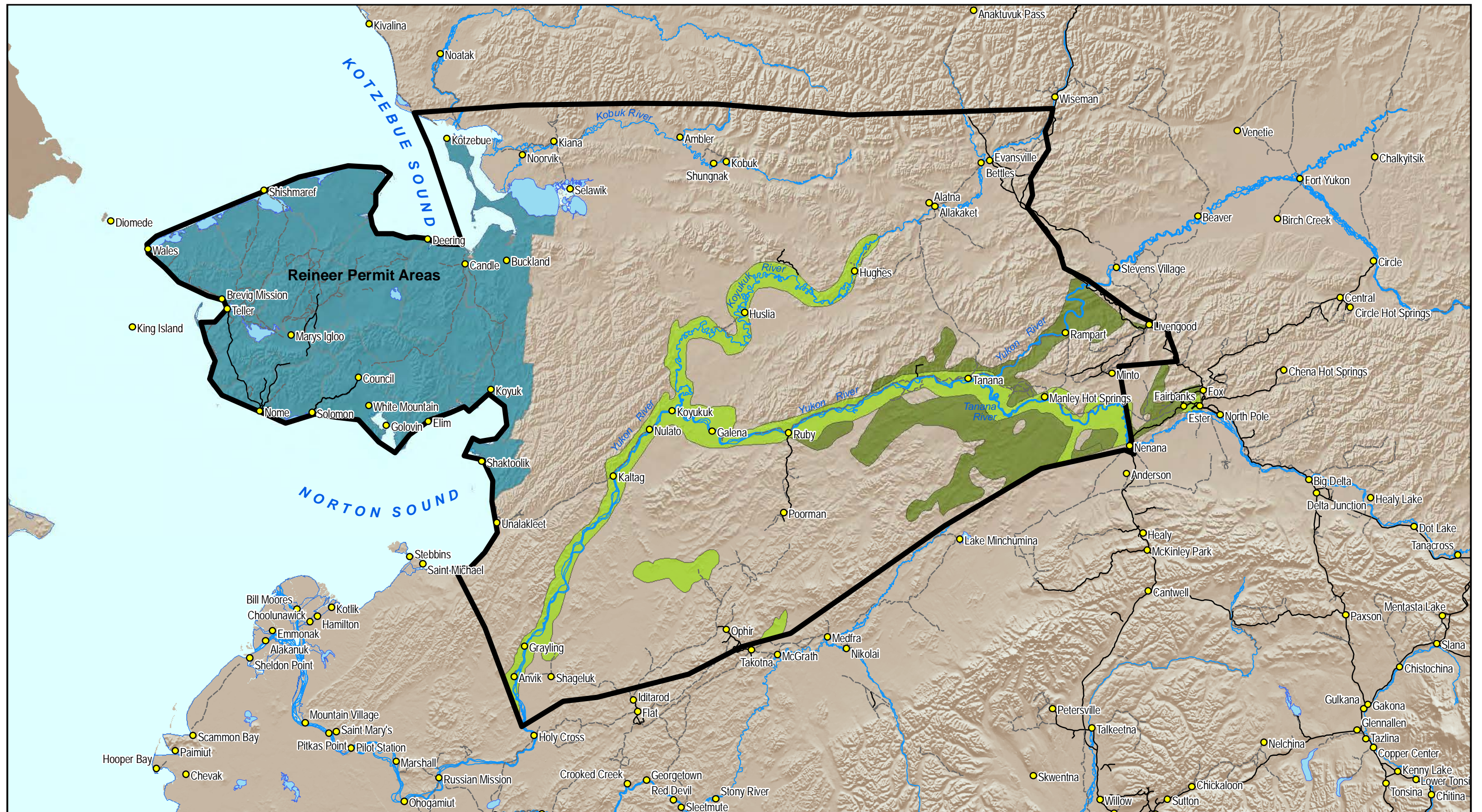
- Towns
- Study Area
- High Commercial Forestry Potential
- Fair Commercial Forestry Potential
- Low Commercial Forestry Potential
- Highway
- Primary or Secondary Road
- Track, Trails or Footpaths
- Other
- Major Lakes
- Major Rivers



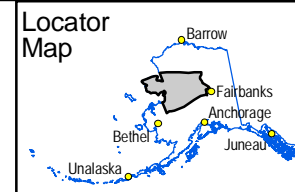
STATE OF ALASKA
 Department of Transportation and Public Facilities
 NORTHERN REGION PLANNING GROUP
 2301 Peger Rd. Fairbanks, AK 99709

**WESTERN ALASKA ACCESS PLANNING STUDY
 COMMERCIAL FORESTRY POTENTIAL IN INTERIOR ALASKA**

SCALE: 0 12.5 25 Miles DESIGNED: Allied GIS
 c:\DOW\GIS\13 gis datasets\mxd\NEL_commercial_forestry_areas_11x17-L.mxd
 DATE: March 19, 2009 SHEET: 1 of 1



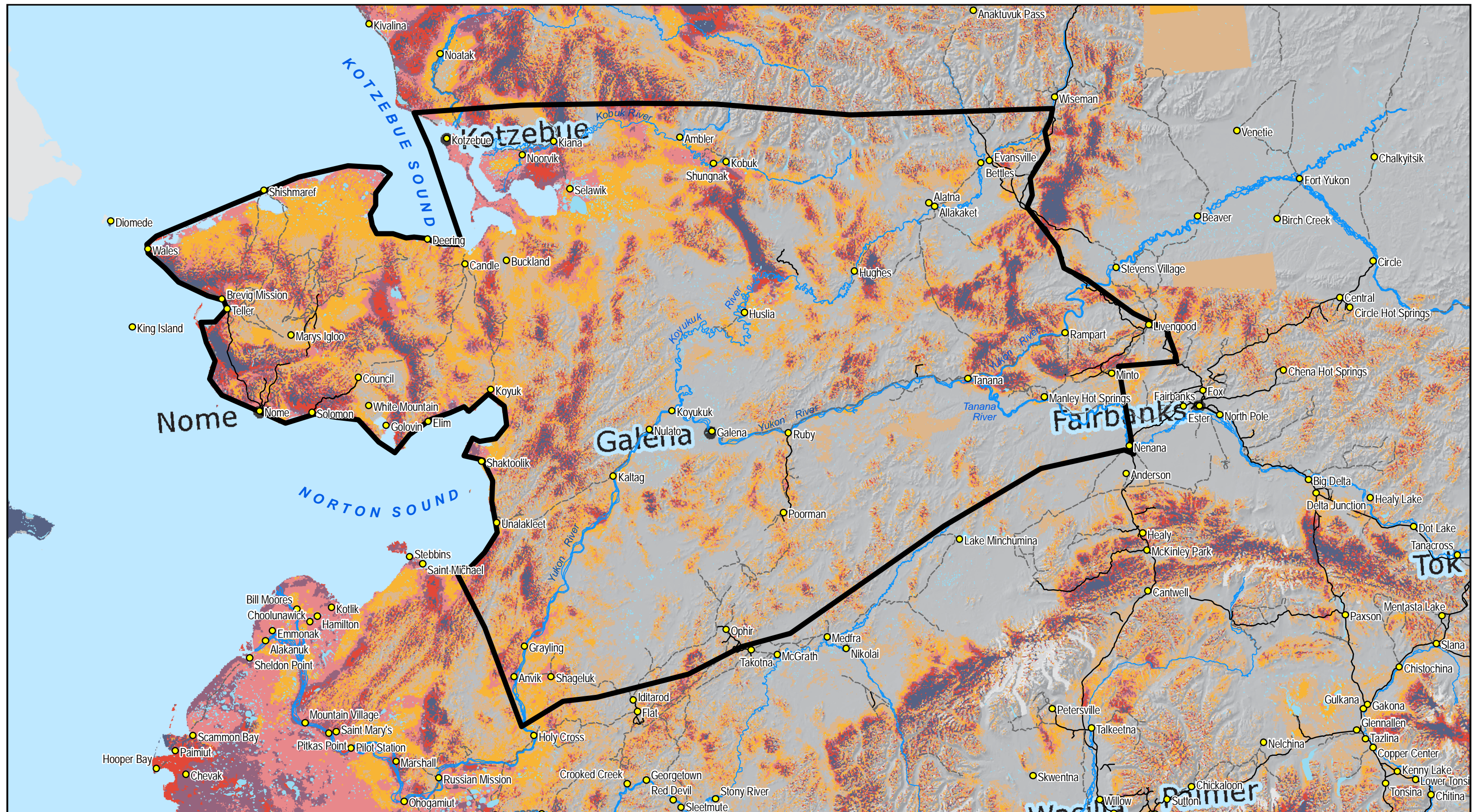
- Towns
- Upland Soils Suitable for Farming
- Reindeer Permit Area
- Lowland Soils Suitable for Farming
- Major Lakes
- Major Rivers
- Study Area
- Highway
- Primary or Secondary Road
- Track, Trails or Footpaths
- Other



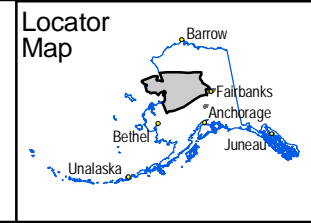
STATE OF ALASKA
Department of Transportation and Public Facilities
NORTHERN REGION PLANNING GROUP
2301 Peger Rd. Fairbanks, AK 99709

**WESTERN ALASKA ACCESS PLANNING STUDY
LOWLAND AND UPLAND AGRICULTURAL SOILS, 1973**

SCALE: 0 12.5 25 Miles DESIGNED: Allied GIS
c:\DOW\GIS\13 gis datasets\mxd\NEI_agricultural_areas_11x17-L.mxd
DATE: March 19, 2009 SHEET: 1 of 1



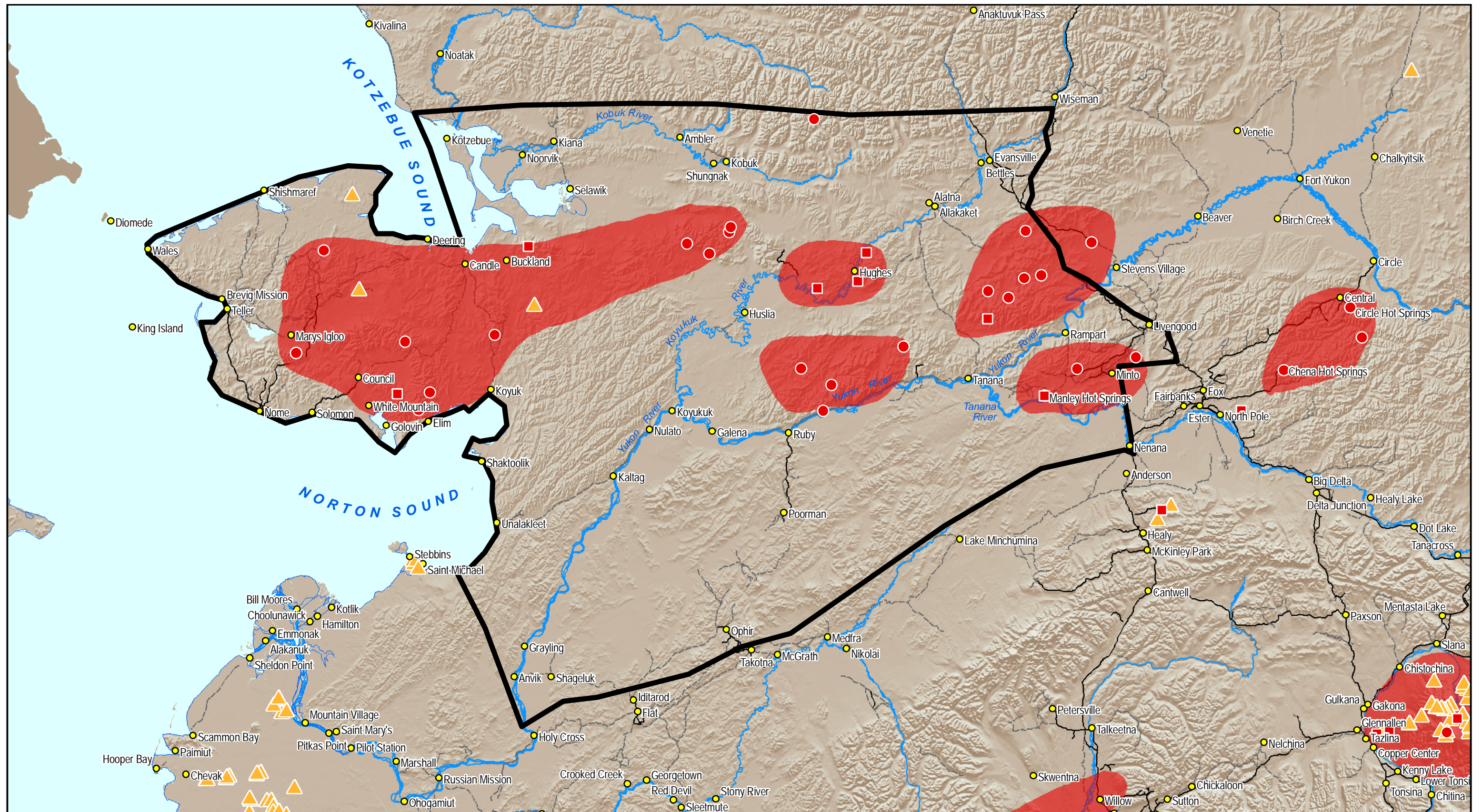
● Towns	○ Fair	● Superb	— Other
○ Study Area	○ Good	— Highway	○ Major Lakes
○ Poor	○ Outstanding	— Primary or Secondary Road	— Major Rivers
○ Marginal	○ Excellent	--- Track, Trails or Footpaths	



STATE OF ALASKA
 Department of Transportation and Public Facilities
 NORTHERN REGION PLANNING GROUP
 2301 Peger Rd. Fairbanks, AK 99709

WESTERN ALASKA ACCESS PLANNING STUDY
 WIND POWER RESOURCE POTENTIAL

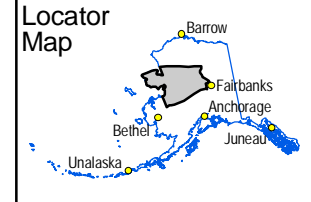
SCALE: 0 12.5 25 Miles
 DESIGNED: Allied GIS
 DATE: March 19, 2009
 SHEET: 1 of 1



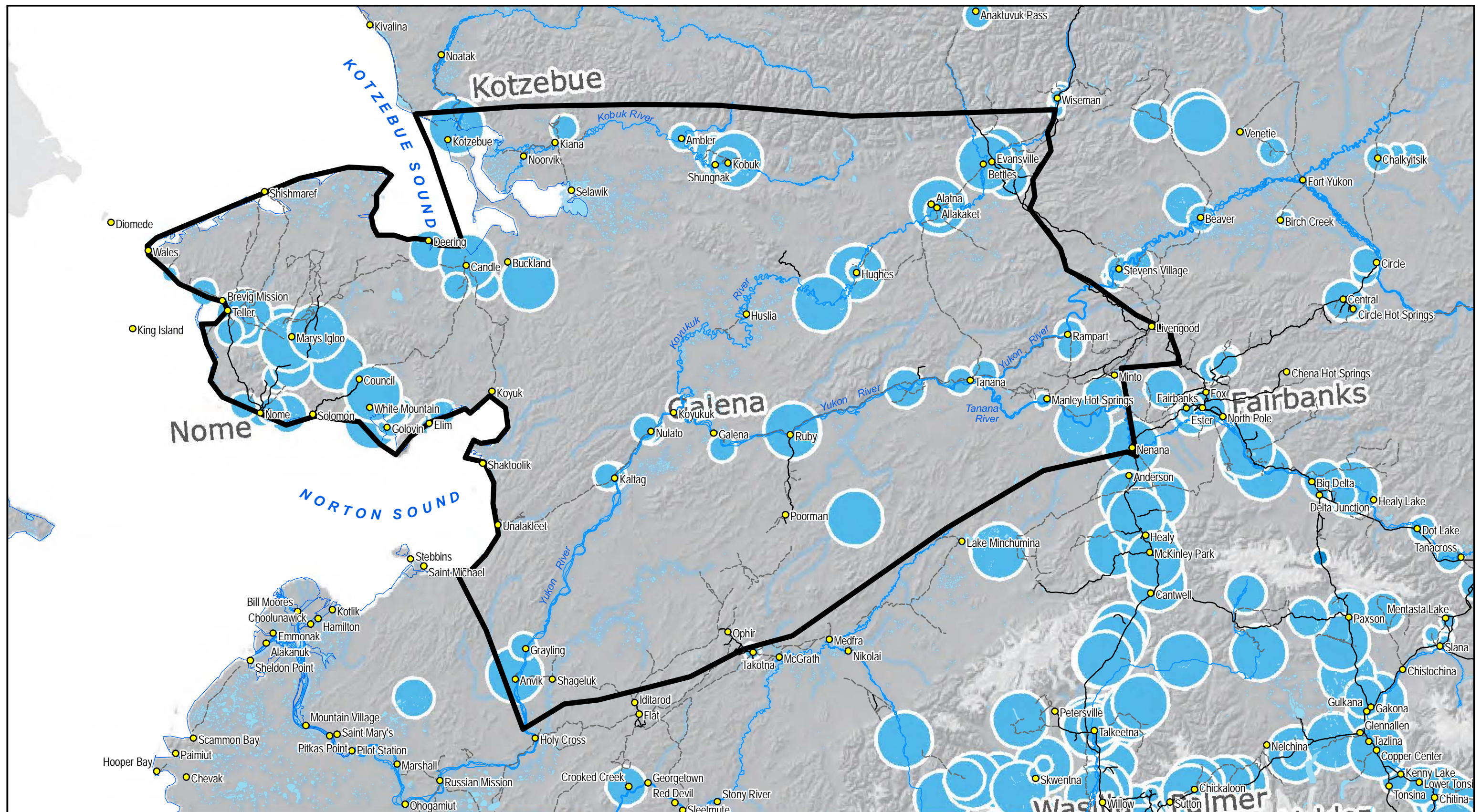
- Towns
- Study Area
- Thermal Spring 32 - 100° F / 0 - 37° C
- Thermal Spring 101 - 200° F / 38 - 93° C

- Regions favorable for the discovery and shallow depth (less than 3280 ft / 1000 m) of thermal water of sufficient temperature for direct-heat applications.
- ▲ Volcano
- Highway

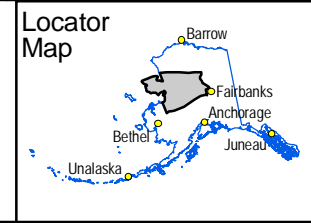
- Primary or Secondary Road
- Track, Trails or Footpaths
- Other
- Major Rivers
- Major Lakes



STATE OF ALASKA Department of Transportation and Public Facilities NORTHERN REGION PLANNING GROUP 2301 Peger Rd. Fairbanks, AK 99709	
WESTERN ALASKA ACCESS PLANNING STUDY POTENTIAL GEOTHERMAL RESOURCE LOCATIONS	
SCALE: 0 12.5 25 Miles	DESIGNED: Allied GIS
c:\DOW\GIS\13_gis_datasets\mxd\NEL_Geothermal_11x17-L.mxd	DATE: March 19, 2009
SHEET: 1 of 1	



● Towns	— Highway	○ Major Lakes
○ Study Area	— Primary or Secondary Road	— Major Rivers
● <0.1 - 1 Capacity (MW)	- - - Track, Trails or Footpaths	
● 0.1 - 1 Capacity (MW)	- - - Other	
● 1 - 10 Capacity (MW)		
● >10 Capacity (MW)		

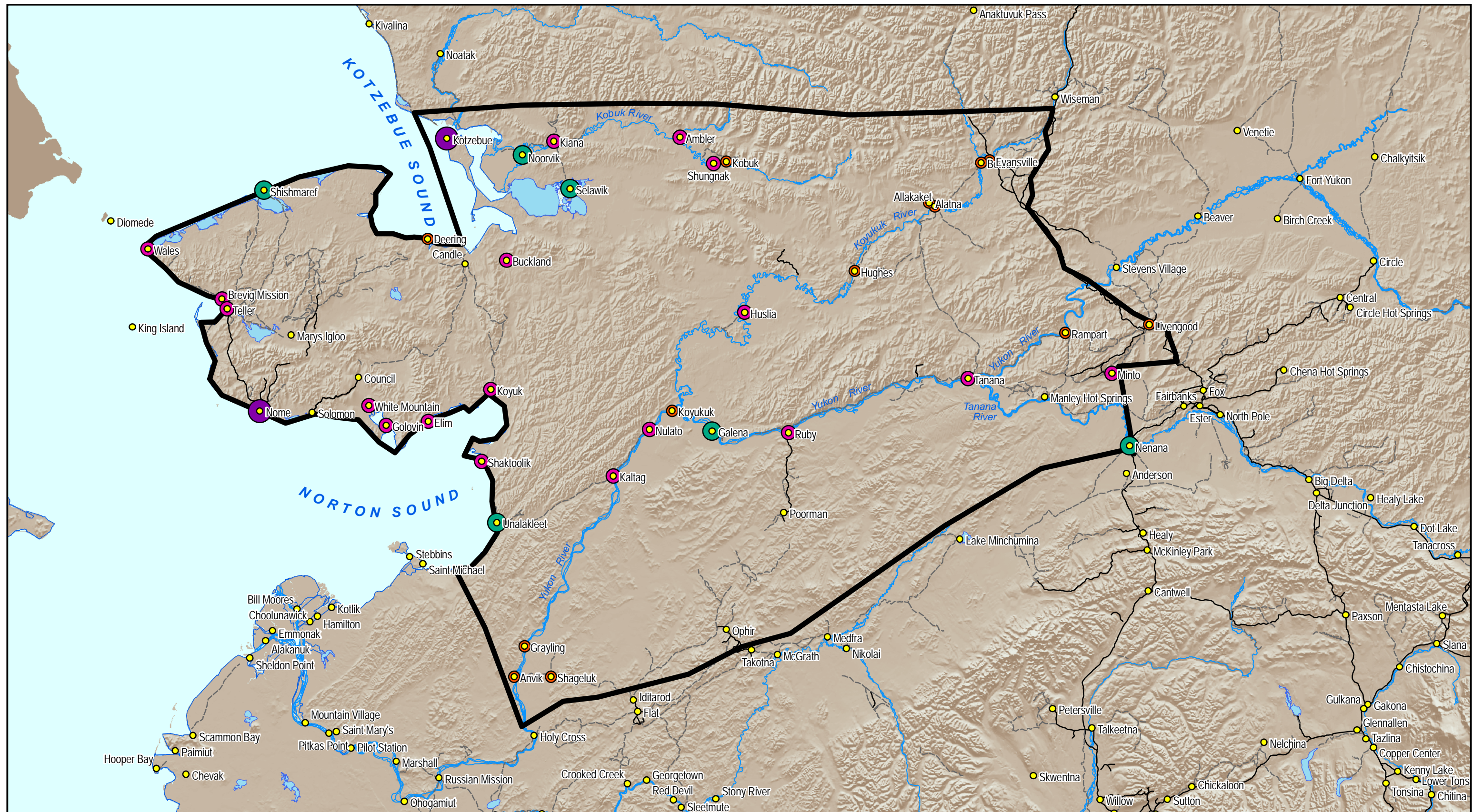


STATE OF ALASKA
 Department of Transportation and Public Facilities
 NORTHERN REGION PLANNING GROUP
 2301 Peger Rd. Fairbanks, AK 99709

WESTERN ALASKA ACCESS PLANNING STUDY
 POTENTIAL HYDROELECTRIC POWER SOURCES

SCALE: 0 12.5 25 Miles
 DESIGNED: Allied GIS

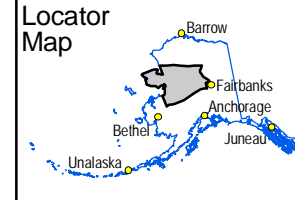
c:\DOW\GIS\13_gis_datasets\mxd\NEL_Hydro_11x174.mxd
 DATE: March 19, 2009 SHEET: 1 of 1



- Towns
- Study Area
- \$ 1 - \$ 99,987,657
- \$ 99,987,657 - \$ 286,919,311

- \$ 286,919,311 - \$ 950,500,692
- \$ 950,500,692 - \$ 5,259,073,072
- Highway
- Primary or Secondary Road

- Track, Trails or Footpaths
- Other
- Major Lakes
- Major Rivers



STATE OF ALASKA Department of Transportation and Public Facilities NORTHERN REGION PLANNING GROUP 2301 Peger Rd. Fairbanks, AK 99709	
WESTERN ALASKA ACCESS PLANNING STUDY VILLAGE TOTAL ECONOMIC VALUE	
SCALE: 0 12.5 25 Miles	DESIGNED: Allied GIS
c:\DOW\GIS\13 gs datasets\mxd\NEL_Total_Economic_Value_11x17-L.mxd	
DATE: March 19, 2009	SHEET: 1 of 1