



Alaska Department of Transportation & Public Facilities

Wendell Avenue Bridge

Sarah Schacher P.E. DOT &PF

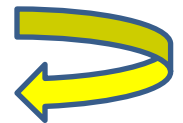
4/26/2012



Project Area



Steese Expy



Wendell Ave



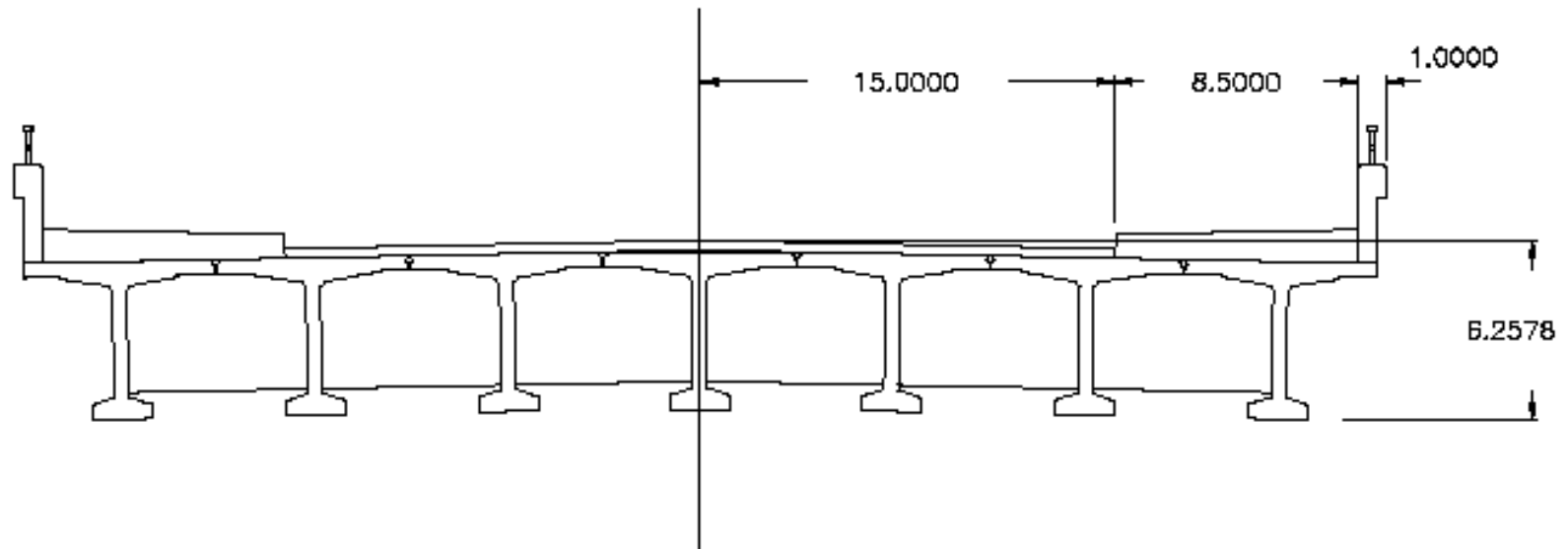


Scope

Rehabilitate or replace the Wendell Ave Bridge, widen sidewalks and provide pedestrian and bicycle access from Graehl Park to the bridge along the north side and to the existing facilities on the south side.

- Bridge rehab not economically practical given poor substructure
- **First task:** address bicycle connection option, as this will drive what the roadway plan and profile is to match into the new bridge
- **Subsequent tasks:** identify roadway profile and width coming into and out of bridge, then develop bridge options.

STATE	PROJECT DESIGNATION	YEAR	SHEET NO.	TOTAL SHEETS
ALASKA	HPP-0872(4)/63291	2012		



WENDELL AVE BRIDGE
PROPOSED CROSS-SECTION



STATE	PROJECT DESIGNATION	YEAR	SHEET NO.	TOTAL SHEETS
ALASKA	HPP-0872(4)/63291	2012		



1A

STATE	PROJECT DESIGNATION	YEAR	SHEET NO.	TOTAL SHEETS
ALASKA	HPP-0872(4)/63291	2012		

0.401 ACRES
12480 SQ. FT.

0.070 ACRES
43261 SQ. FT.

0.705 ACRES
30814 SQ. FT.

0.000 ACRES
0 SQ. FT.

0.187 ACRES
8175 SQ. FT.

0.186 ACRES
8164 SQ. FT.

0.128 ACRES
5550 SQ. FT.

0.344 ACRES
14900 SQ. FT.

0.172 ACRES
7500 SQ. FT.

0.172 ACRES
7500 SQ. FT.

0.001 ACRES
43 SQ. FT.

0.053 ACRES
2304 SQ. FT.

0.141 ACRES
6124 SQ. FT.

0.144 ACRES
6274 SQ. FT.

0.000 ACRES
0 SQ. FT.

0.196 ACRES
8584 SQ. FT.

0.000 ACRES
0 SQ. FT.

0.144 ACRES
6274 SQ. FT.

0.144 ACRES
6274 SQ. FT.

0.000 ACRES
0 SQ. FT.

0.000 ACRES
0 SQ. FT.

0.000 ACRES
0 SQ. FT.

0.000 ACRES
0 SQ. FT.

0.000 ACRES
0 SQ. FT.

0.000 ACRES
0 SQ. FT.

0.000 ACRES
0 SQ. FT.

0.000 ACRES
0 SQ. FT.

0.000 ACRES
0 SQ. FT.

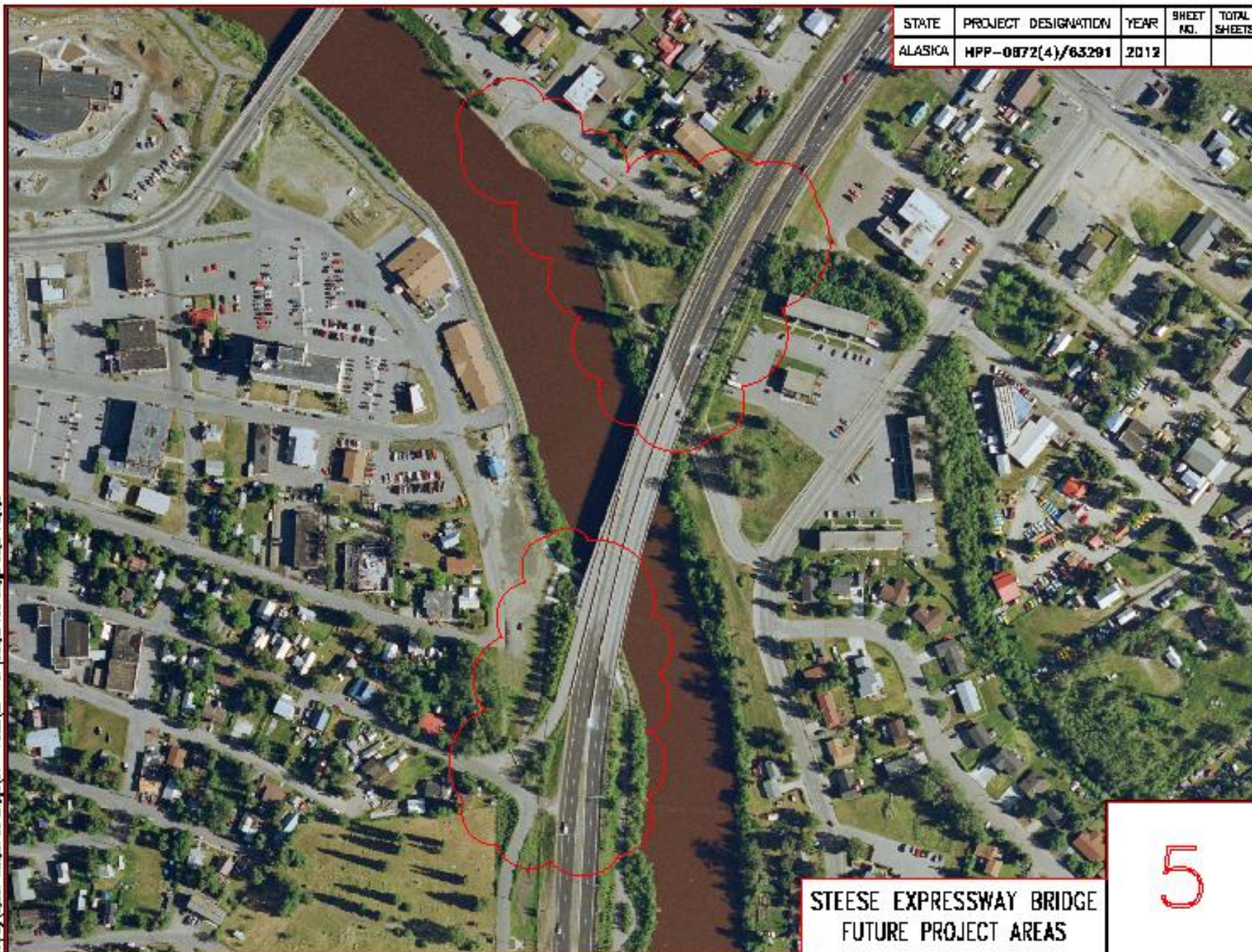
0.000 ACRES
0 SQ. FT.

WENDELL AVE BRIDGE
BIKE ROUTE SIGNED TO 2ND ST.

3

WENDELL AVE BRIDGE - EPM WENDELL AVE BRIDGE 0532-141423

STATE OF ALASKA
DOT
2003-028591-0



STATE	PROJECT DESIGNATION	YEAR	SHEET NO.	TOTAL SHEETS
ALASKA	HPP-0872(4)/63291	2012		

STEESE EXPRESSWAY BRIDGE
FUTURE PROJECT AREAS

5



Preliminary Schedule

Environmental Document: Complete Summer 2013

Design, ROW/Utilities: Ongoing – Summer 2015

Advertise: Summer 2015 (FFY15)

****Schedule and funding are variable depending on design alternatives. ROW acquisition typically adds 2-4 years to a project's design duration.**



Preliminary Budget

- **Environmental/Design:** \$1.2 Million
- **Construction:** \$7-9 Million (depending on alternatives).
- **ROW/Utilities:** Estimated at \$500,000 but may also vary.



We'd Love Feedback!

- Narrowing down connection options will help us focus on more detailed bridge design efforts and maintain project progress.

Contact:

Sarah Schacher, Project Manager

Phone: (907) 451-5361

Email: sarah.schacher@alaska.gov