



# **Alaska Department of Transportation & Public Facilities**

## **Wendell Avenue Bridge**

**Project No. 63291**

October 29, 2013



# Public Involvement Plan

## Why Are We Here?

- Continue to raise awareness of the project
- Answer your questions
- Report on feedback and how we've incorporated it into our design







# Wendell Bridge Historical Facts

- The original bridge was built in **1905**.  
It collapsed, floated downstream, jammed against the (then) new Cushman bridge and caused flooding in town.
- Construction on the current bridge took two seasons--completed in **1953**.



Fairbanks and the Wendell Ave Bridge, c.1955  
(City of Fairbanks and the Alaska Housing Authority)



# A Very Brief Overview

## Project Goals:

- **Replace** the bridge
- Provide **wider sidewalks**
- Provide a **bicycle / pedestrian connection** to the bridge

## Funding:

- GO Bond, November 2012
- Estimated cost of \$14-17M

## Construction Schedule:

- Possibly as early as 2016
- 12-18 month duration



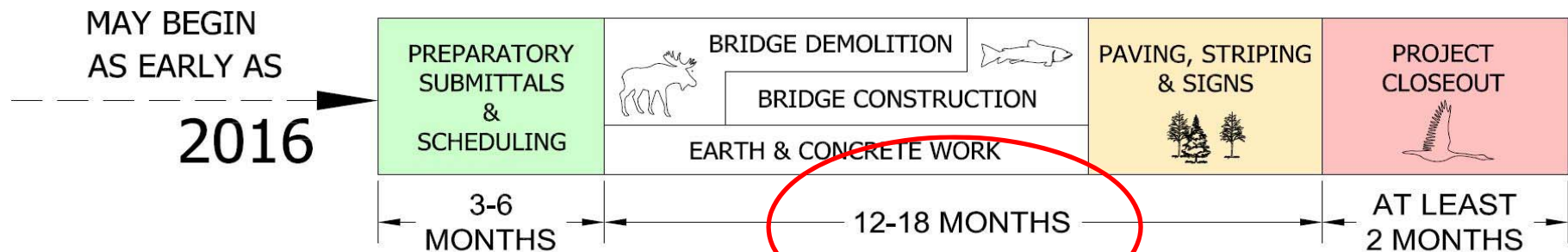
Wendell Bridge, Looking South  
(DOT&PF file photo, c.1962)





# Estimated Schedule

## 3. CONSTRUCTION



Expect the bridge to be  
**closed to all traffic**  
for the duration of construction



# Open House Meeting Series Recap

- **March 27, 2013** (1 of 3)

- General overview
- Bicycle / pedestrian connection options

- **May 8, 2013** (2 of 3)

- Reviewed feedback
- Bridge rail options
- Lighting options





## See for Yourself ...

- On our project website:  
[dot.alaska.gov/nreg/wendell](http://dot.alaska.gov/nreg/wendell)
    - Review the comments we received
    - Read our analysis and conclusions ...
    - Read our design decisions ...
- ... all based on your comments

**COMMENT SHEET** (Project 63291)  
**WENDELL AVENUE BRIDGE**  
 OPEN HOUSE MEETING  
 May 8, 2013

We welcome your input and appreciate you taking the time to be involved. All comments and poll answers received will be posted on the project website. Please submit your comments by **May 29, 2013**. For more information or to submit comments, please see the ADOT&PF staff at the meeting or contact Sarah Schuchter, P.E., Engineering Manager, Phone (907) 451-5181, FAX (907) 451-5128, email: [sarah.schuchter@alaska.gov](mailto:sarah.schuchter@alaska.gov), or visit the project website at: <http://dot.alaska.gov/nreg/wendell>. For text telephone (TDD), phone toll (907) 451-2363.

NAME: GENIE MUSEWICZ (Fire Dept)  
 E-MAIL ADDRESS: edmusewicz@ci.fairbanks.ak.us  
 MAILING ADDRESS: 1101 Cushman St. Box #69921

(Please include your address, phone number, email address, or other personal identifying information in your comment, please be advised that your online comment - including your personal identifying information - may be made publicly available at any time. While you can ask us to remove your comment to withhold your personal information from public review, we cannot guarantee that we will be able to do so.)

**PROJECT QUESTIONS**

1. Please rank each bridge rail option in order of preference (1 - 4) where 1 is most desired and 4 is least desired:

☒ Option 1 - two-tube pedestrian rail on concrete vehicle rail (similar to Barnette Street Bridge)  
☐ Option 2 - three-tube steel curtain pedestrian/vehicle rail  
☐ Option 3 - three-tube steel pedestrian/vehicle rail on curb  
☐ Other - please explain in comments below

2. Please rank each luminaire option in order of preference (1 - 4) where 1 is most desired and 4 is least desired:

☒ Option 1 - common modern roadway luminaire - single mast arm  
☐ Option 2 - common older roadway luminaire - bracket mast arm  
☐ Option 3 - specialty streetcape lamp/luminaire  
☐ Other - please explain in comments below

Please take a moment to explain your answers to the questions, or share other comments about the project (scope, traffic impacts, Chena River access, bridge aesthetics, etc.)

Concern about "flooded areas" under bridge where people can hid, drink, get stoned, store drugs & illuminated & blocked.

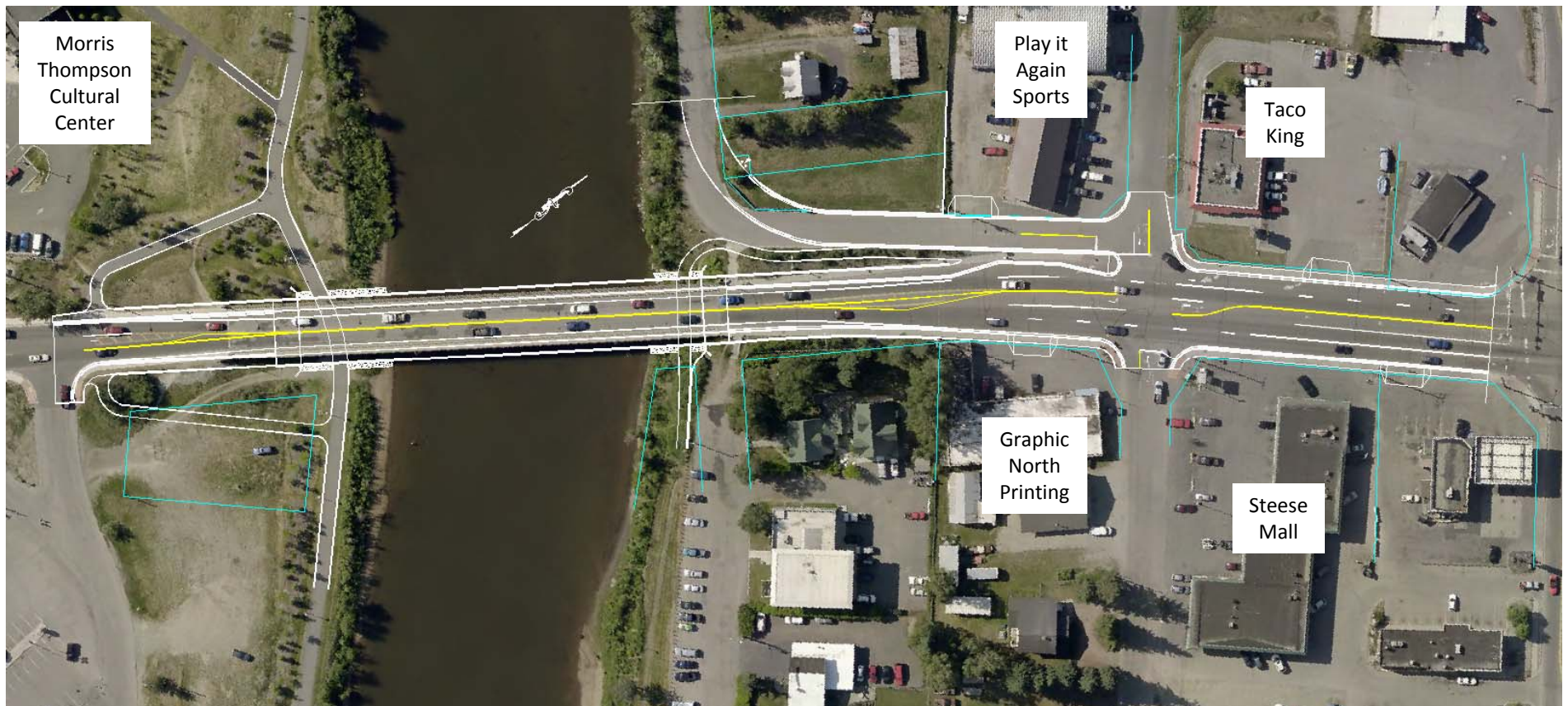
Please continue comments on the other side →

## Handouts are also available after this presentation.





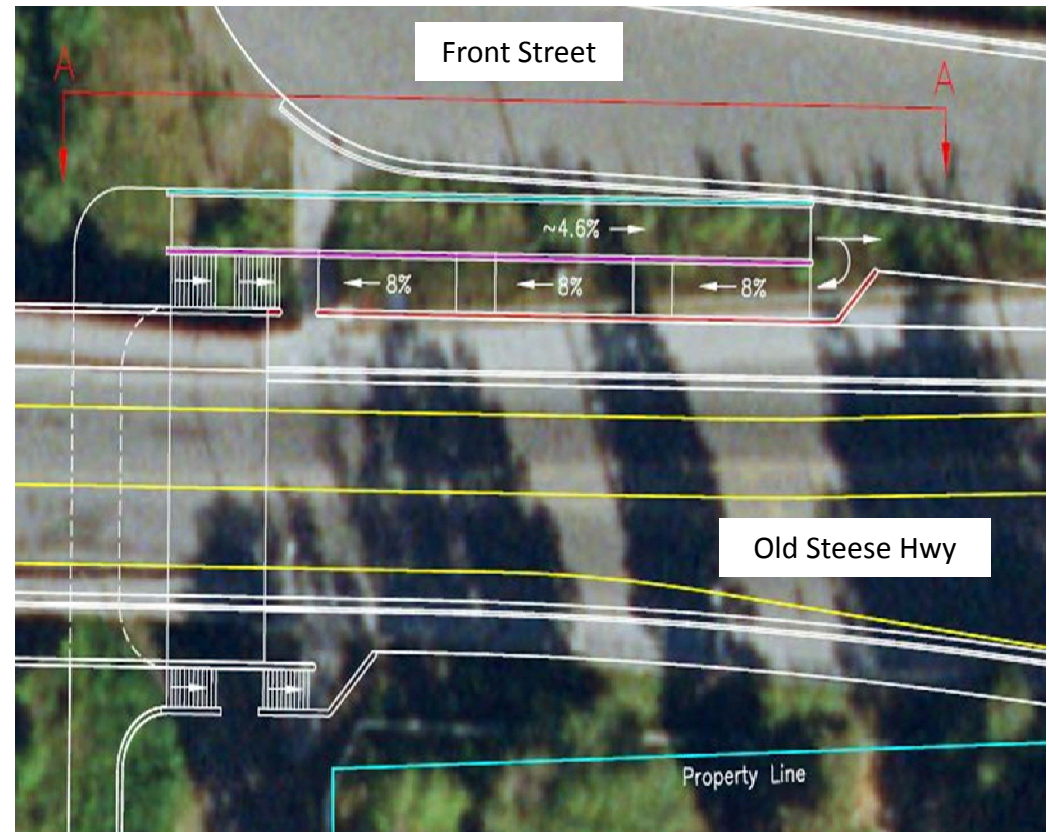
# Project Concept Overview







- **Pathway Concerns about:**

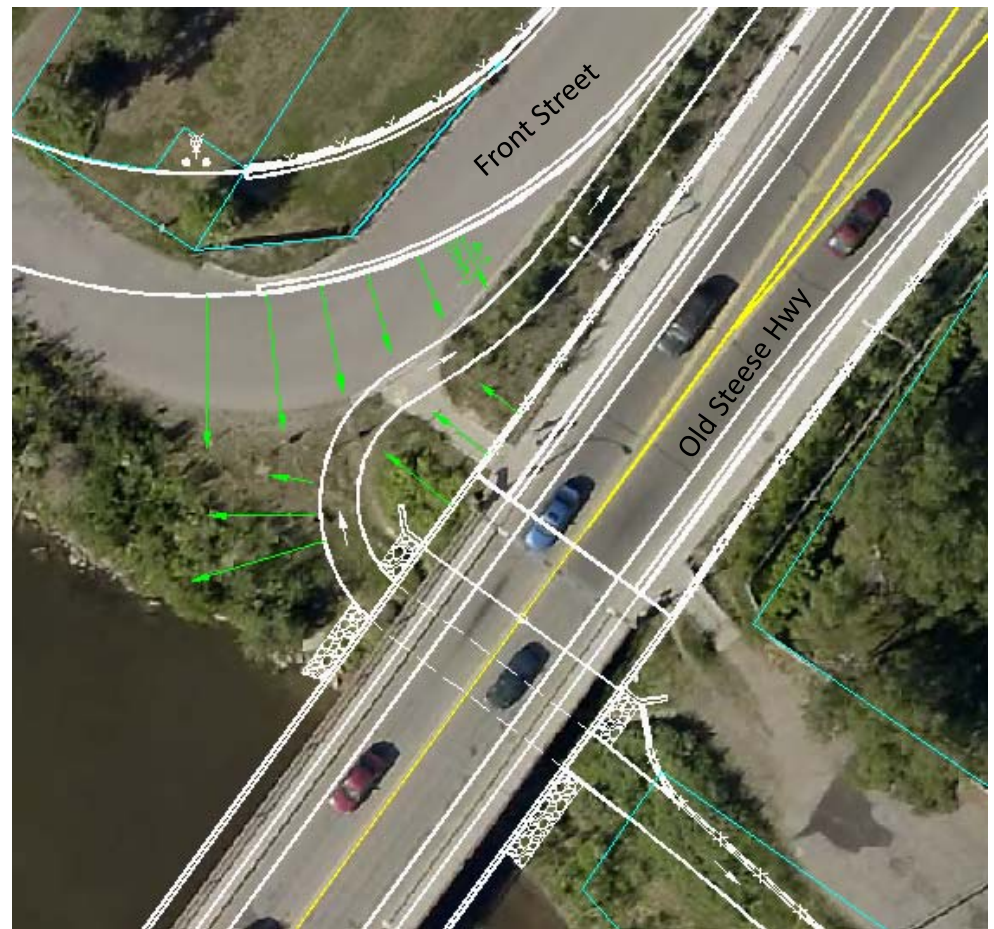




## ... What We Propose

- **Pathway**

- Soften curve Front Street
- Reconfigure pathway to eliminate the blind corner
- Sloped embankments
- Eliminate stairs & add decorative pedestrian rail







## ... What We Propose

- **Underpass safety**

- Use vertical abutments
- Add lighting as necessary
- Land contouring and brush clearing
- Offset the path from the wall
- Use large riprap to discourage loitering

Similar to ...



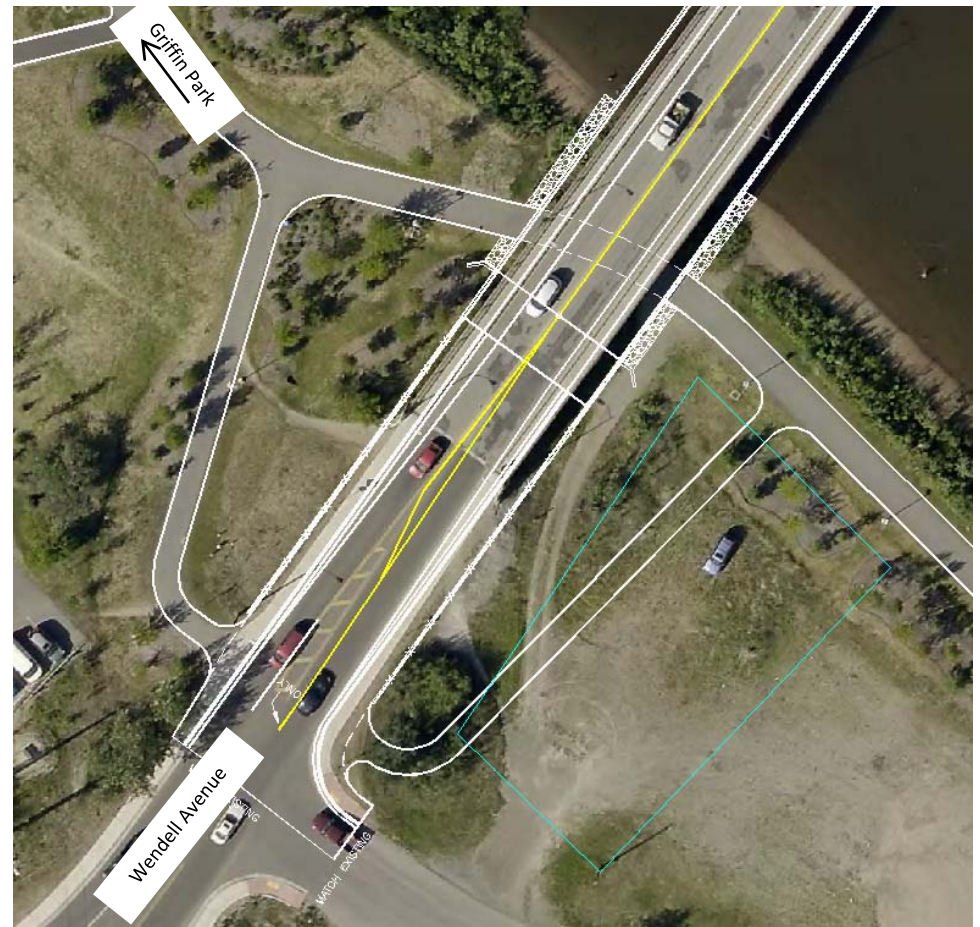
... but different



## ... What We Propose

- **Pathway**

- Because we've eliminated stairs on the north end
- Add a connector path south of bridge
- Provide access to the Chena Riverwalk underpass crossing







## What We Heard ...

- Be **consistent** in element **style** for all bridges in the downtown core area, including:
  - Bridge rail
  - Bridge and path lighting
  - City of Fairbanks “**Complete Streets**” & “**Wayfinding**” projects





## ... What We Propose

- **Bridge Rail**
  - Two-tube pedestrian rail on a concrete vehicle rail
  - Similar to the Barnette Street Bridge
  - From comment sheets, this was the preferred type







## ... What We Propose

- **Lighting Style**
  - Preferred choice: **specialty streetscape lamp/luminaire**
  - Second choice: **braced mast arm**
  - Final choice will emphasize **style** and **cost** without compromising **safety**





## ... What We Propose

- City of Fairbanks
  - “**Complete Streets**” & “**Wayfinding**” projects
    - At this time, specific feature design details are not final
    - We will see if or how we can integrate features into the project
    - Wendell Avenue is not officially designated to be part of the “Complete Streets” project



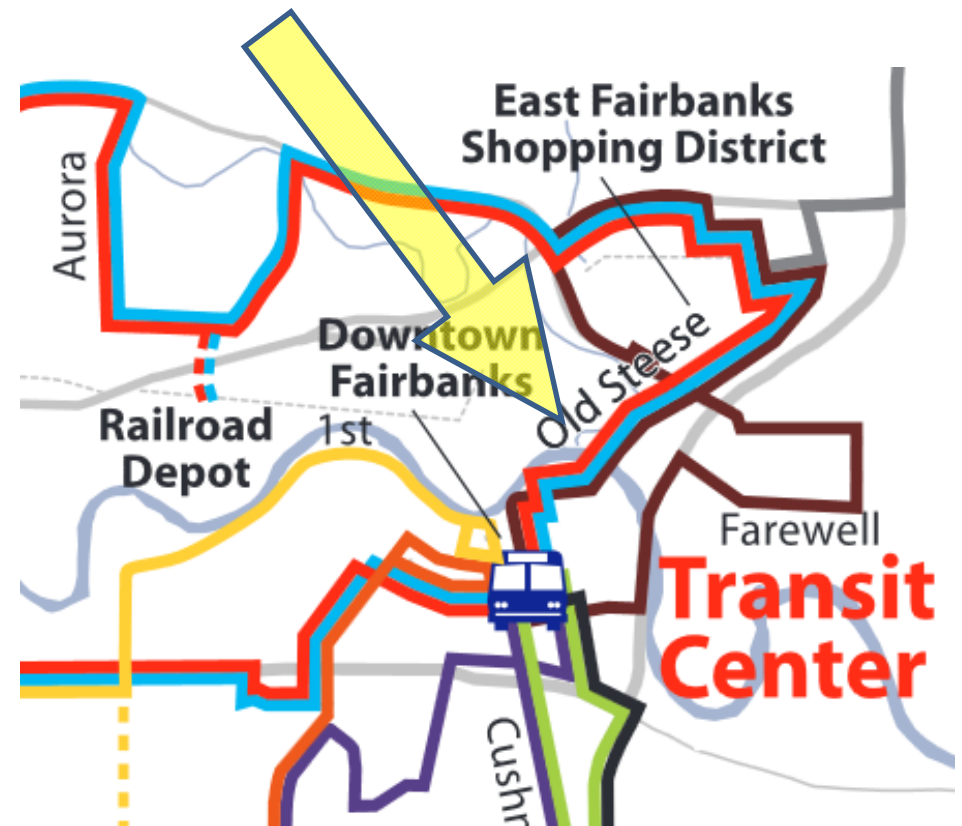
City of Fairbanks “Complete Streets Concept”, 2012





## What We Heard ...

- **Increase transportation connection options by adding a bus stop**
  - Bus stops currently exist on three lines in the project area
  - Red & Brown Lines: southbound
  - Blue Line: northbound

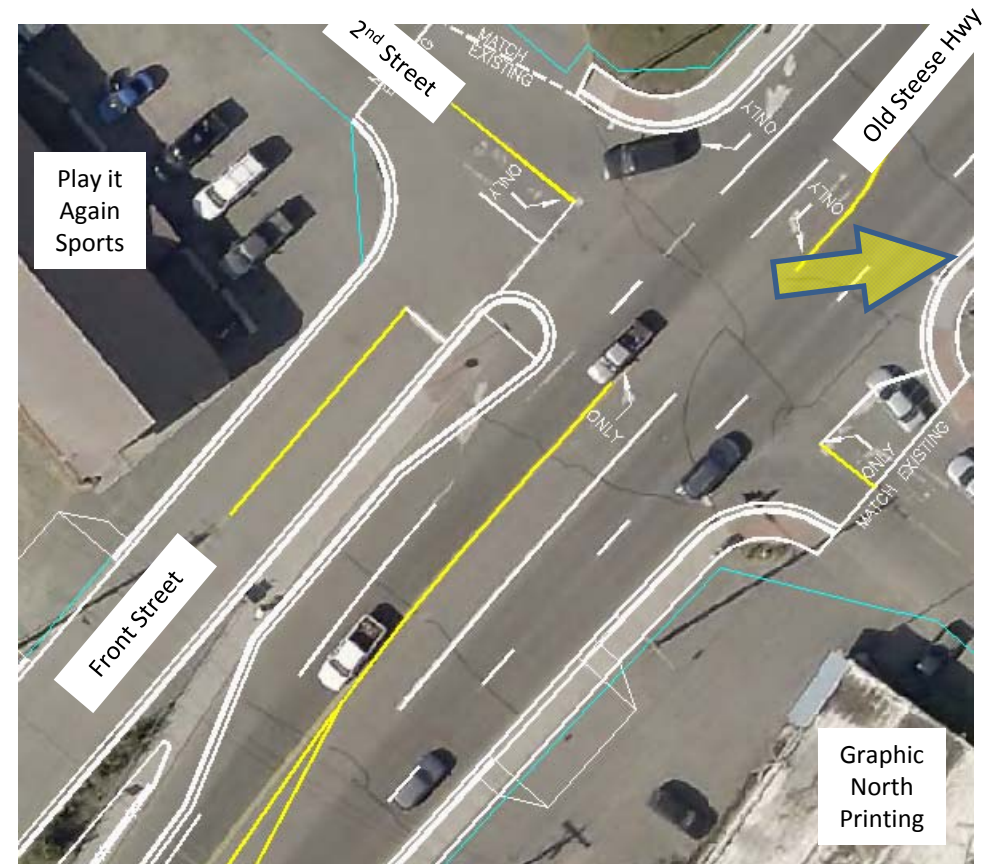




## ... What We Propose

- **Bus Stop / Turnout**

- FNSB/MACS is receptive to the idea
- We will explore the possibility of adding a turnout as shown for Red & Brown Lines
- Blue Line would continue to use the existing stop location

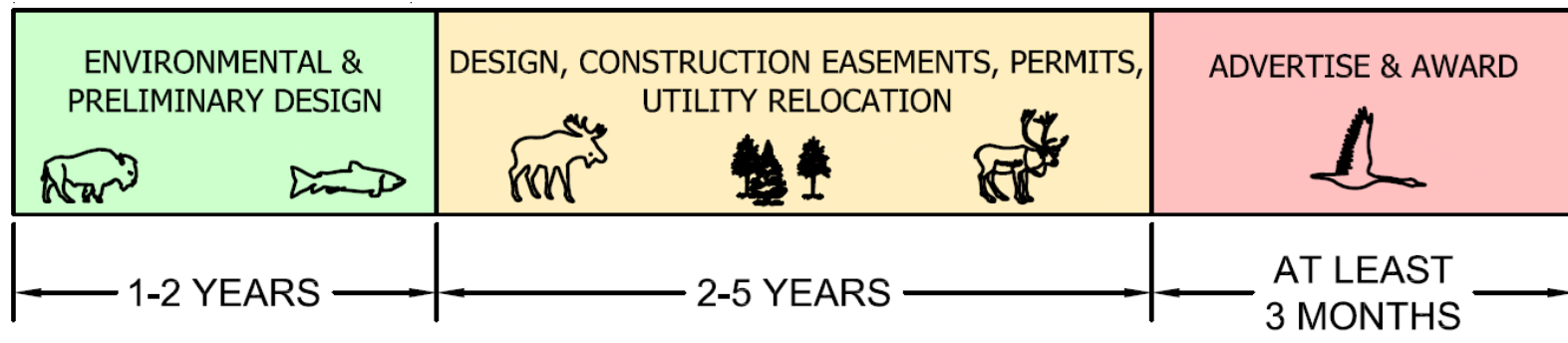


Graphic  
North  
Printing





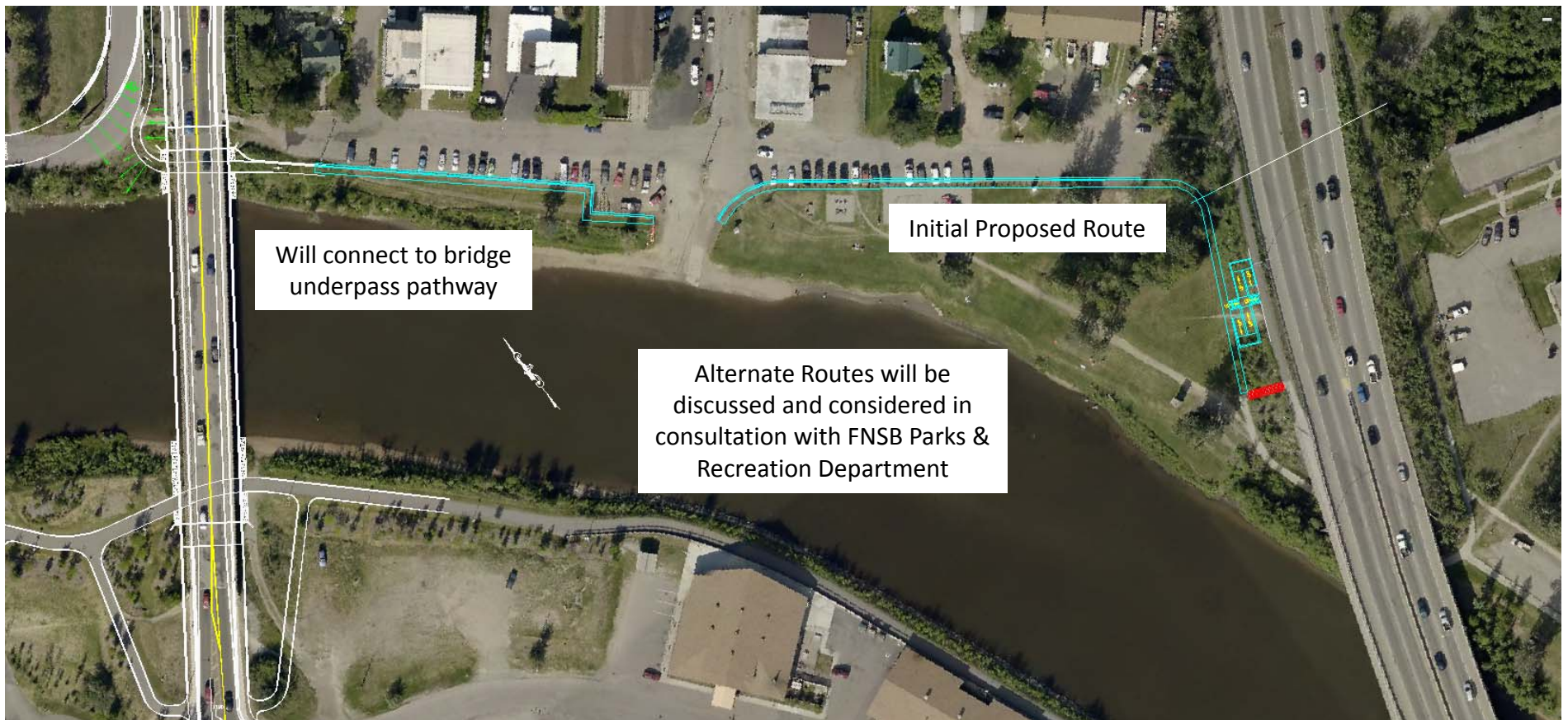
# What's Next in Design?



- Complete the Environmental Document
- Coordinate with utilities
- Obtain right-of-way
- Create final plans and specifications
- Obtain permits
- Advertise & Award



# Future Project in Graehl Park







# Thank You For Your Time!

- Please take a closer look at our displays--we're happy to answer any questions
- Please fill out a comment sheet – it helps us to help you
- You can find more information at our project website:  
[dot.alaska.gov/nreg/wendell](http://dot.alaska.gov/nreg/wendell)
- ADOT&PF Contact:
  - Email: [sarah.schacher@alaska.gov](mailto:sarah.schacher@alaska.gov)
  - Phone: (907) 451-5361