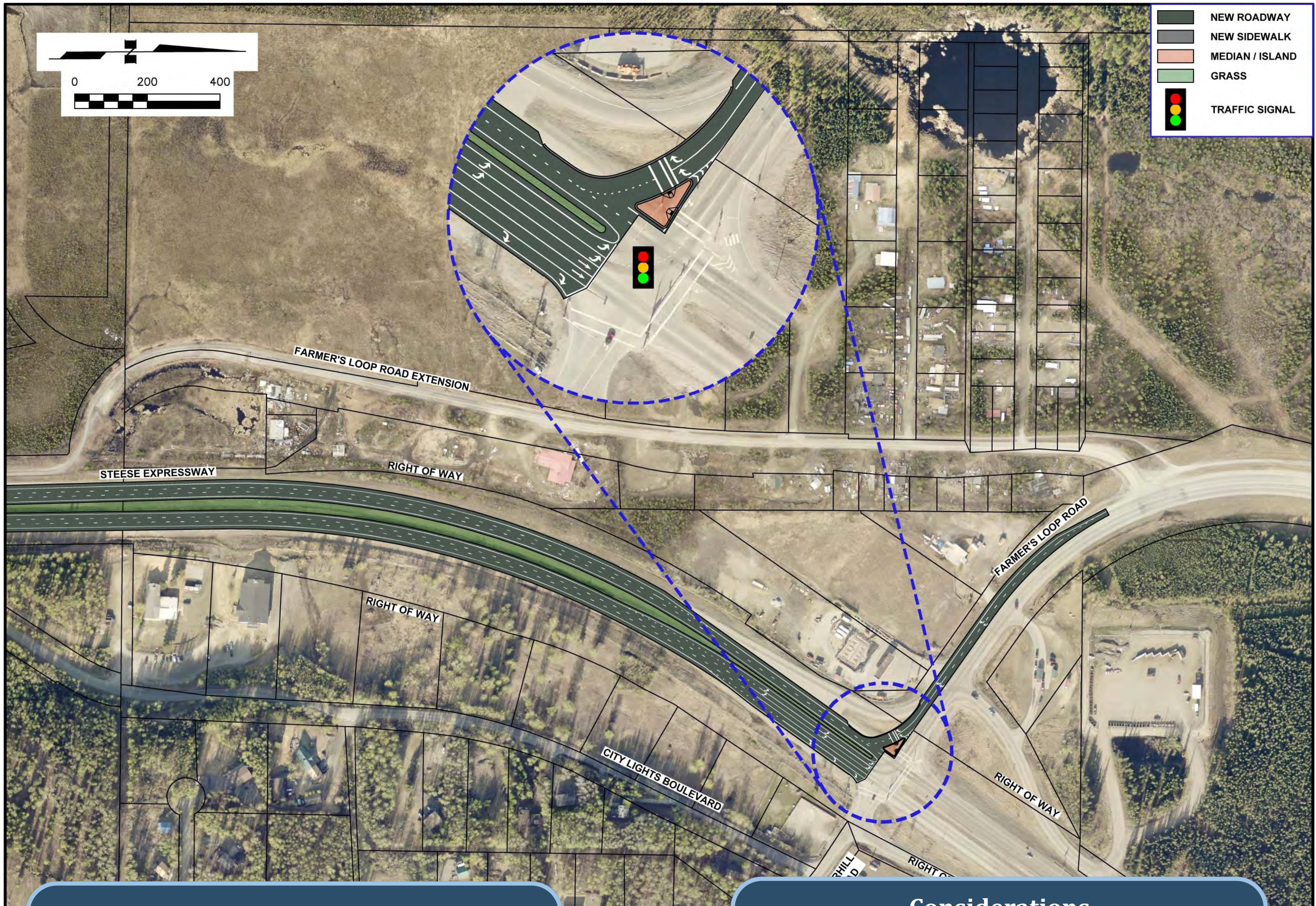




STEESE EXPRESSWAY / JOHANSEN EXPRESSWAY INTERCHANGE

PROJECT NO. Z607320000/0002337

Farmers Loop Road - Dual Right Turn Lanes



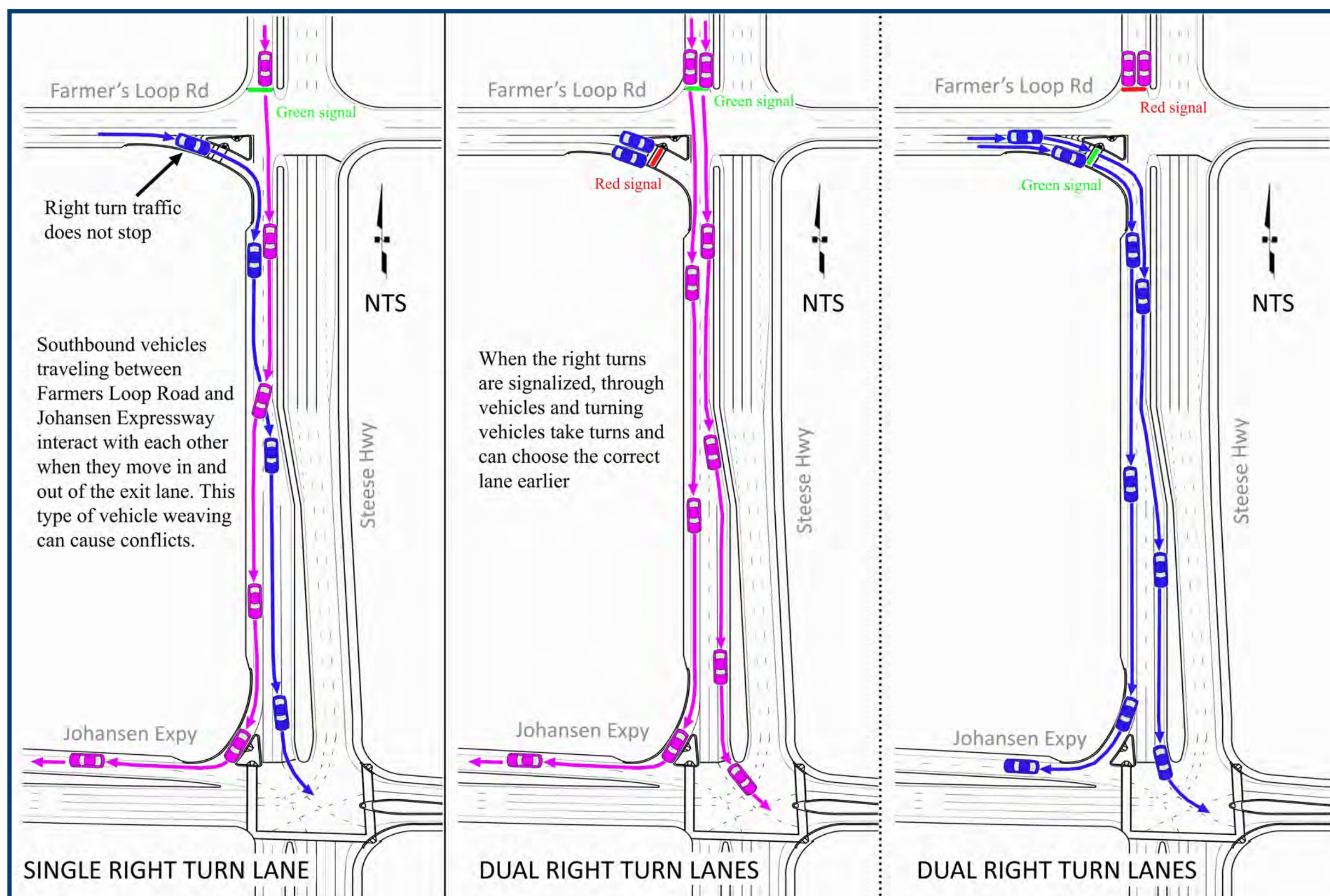
Key Improvements

- ◆ The free-flowing eastbound right turn from Farmers Loop onto the Steese would change to two signal-controlled right turn lanes.
- ◆ For some alternatives, signalized dual right turn lanes are proposed for the southbound right turn from the Steese onto the Johansen.

Considerations

- ◆ Reduces the merging conflict of eastbound right turn traffic from Farmers Loop trying to enter the Steese through lanes at the same time as the traffic on the Steese is trying to enter the turn lane to go right onto the Johansen.
- ◆ This is not a standalone alternative and would be combined with other alternatives to provide enhanced benefits.

Farmers Loop Conversion to Signalized Dual Lanes



Steease/Johansen Conversion to Signalized Dual Lanes

