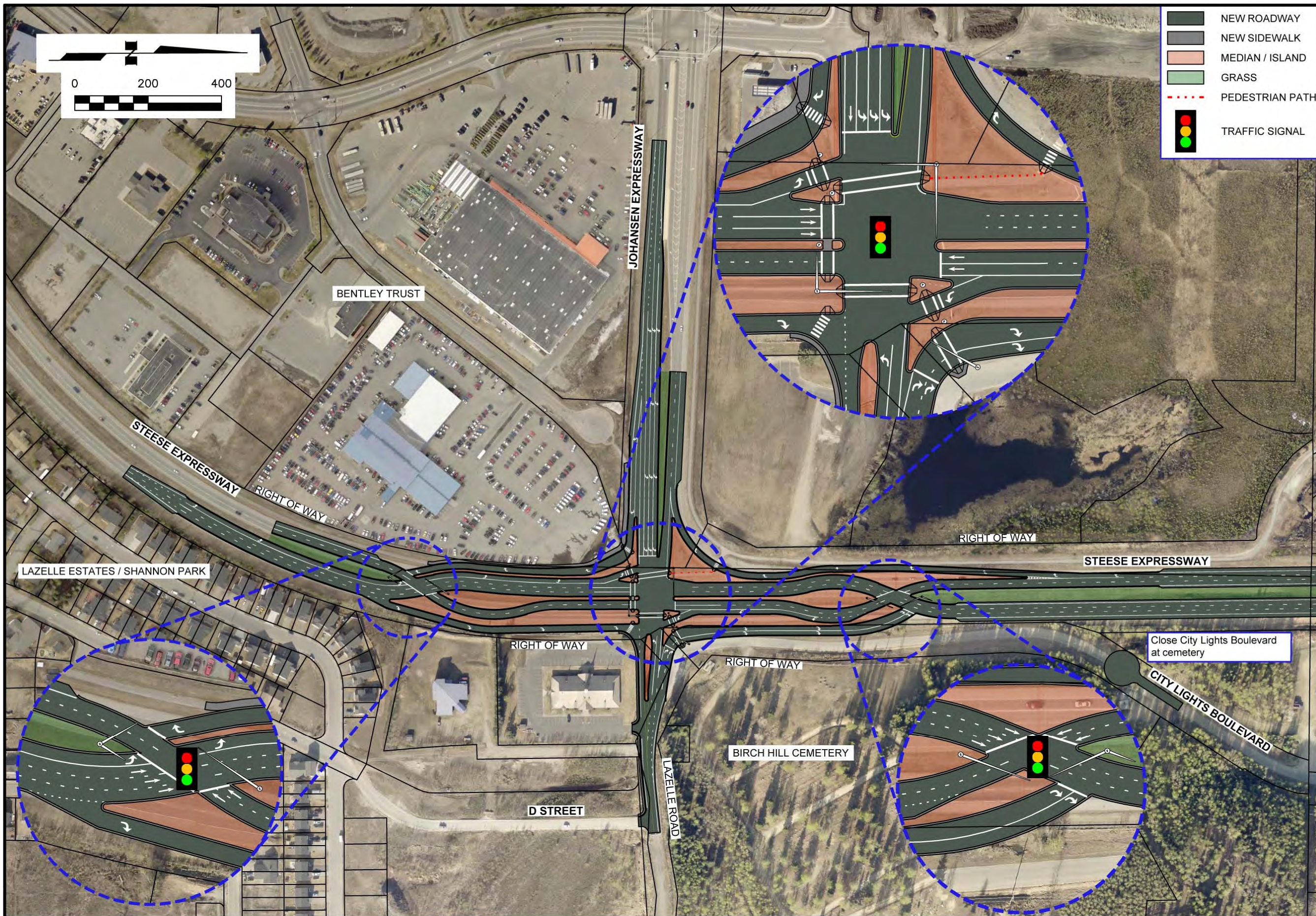




STEESE EXPRESSWAY / JOHANSEN EXPRESSWAY INTERCHANGE

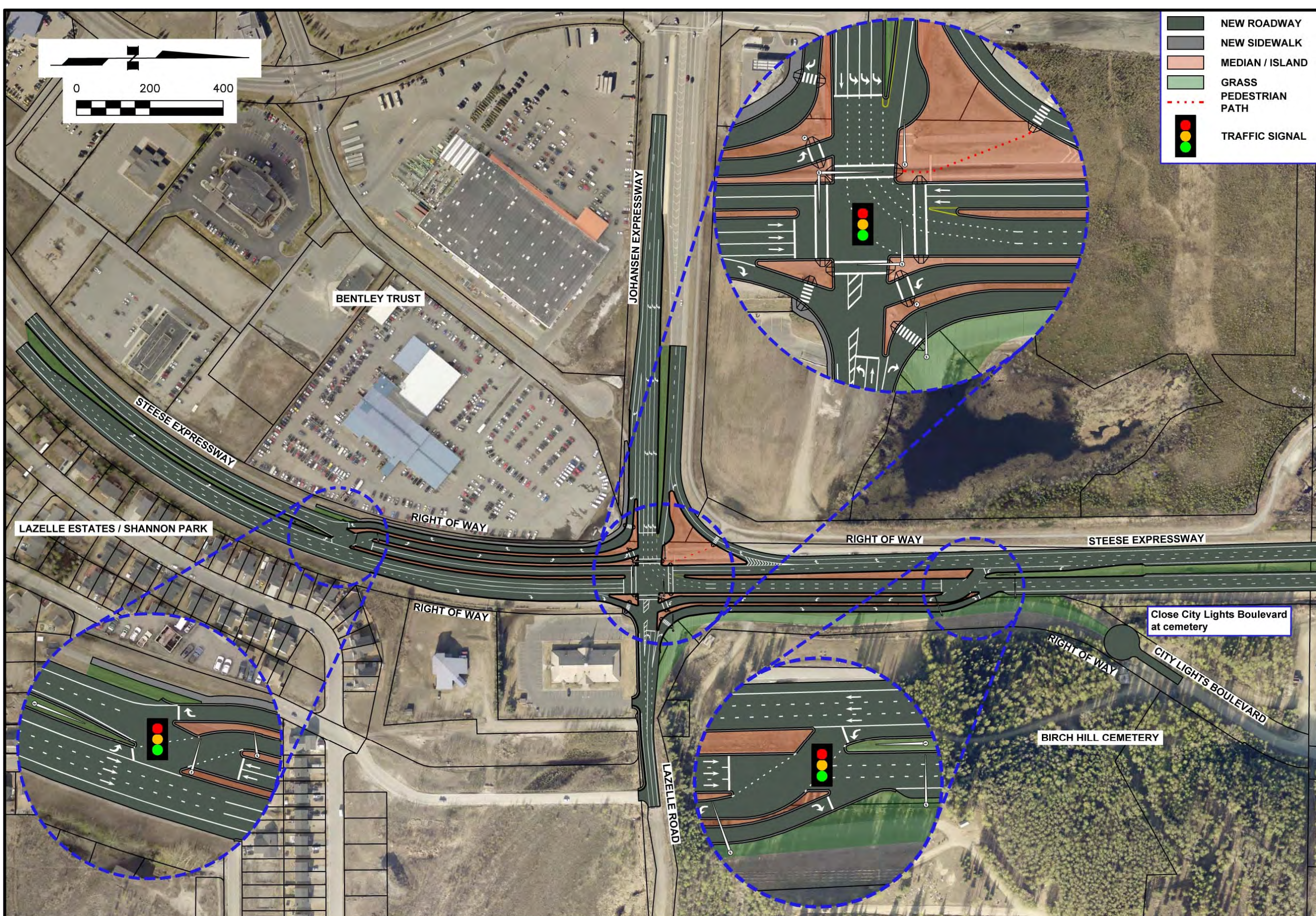
PROJECT NO. Z607320000/0002337

Alternatives Considered but Dismissed



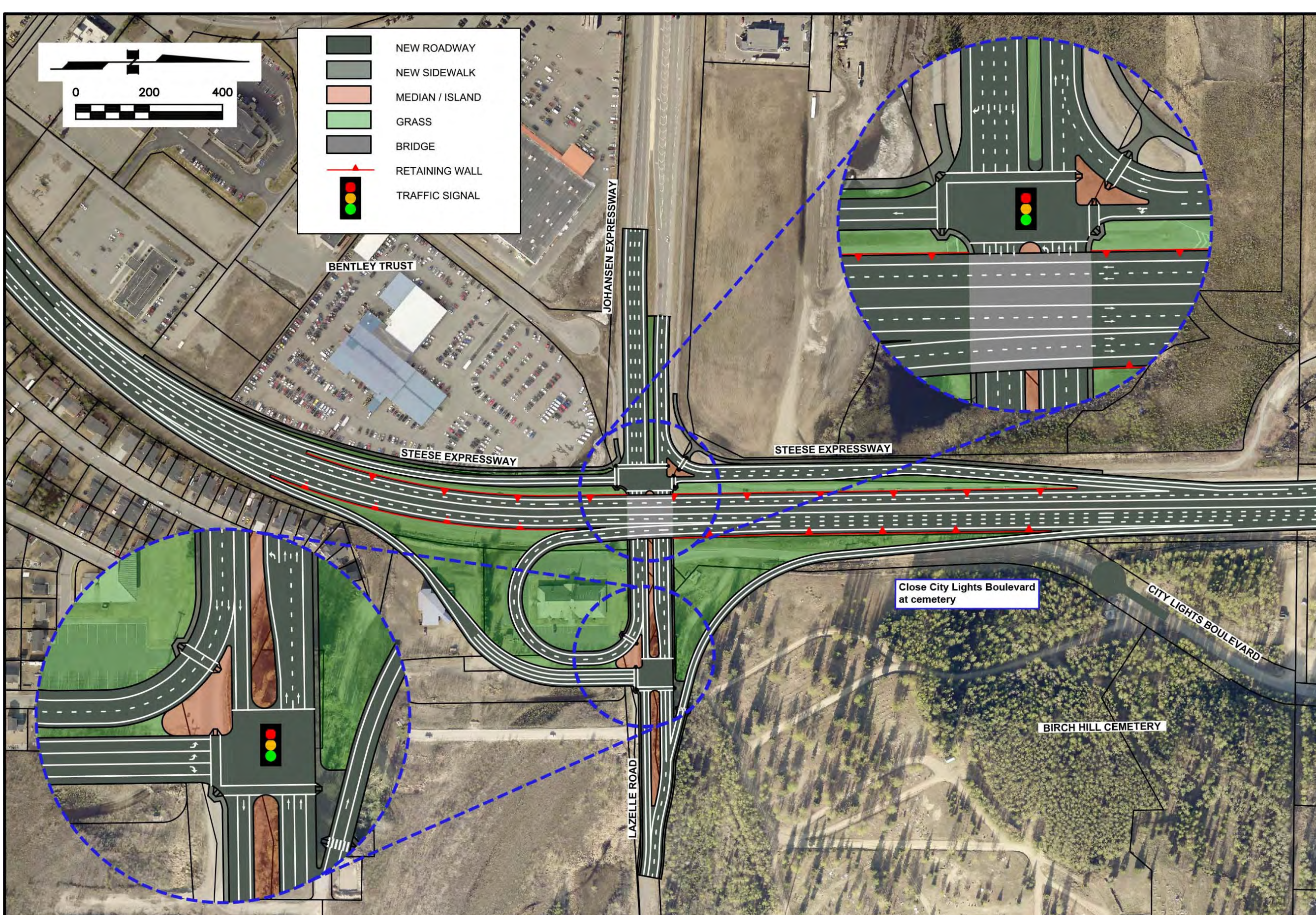
Alternative C Synchronized Split-Phased Intersection

- ◆ This alternative does not have significant capacity and pedestrian benefits.
- ◆ In addition, there is an at-grade alternative (Alternative B, Enhanced Conventional Intersection) that is less complicated, cheaper to build and maintain, and more in line with Fairbanks driver expectations.



Alternative D Displaced Left Turn Intersection

- ◆ This alternative does not have significant capacity and pedestrian benefits.
- ◆ In addition, there is an at-grade alternative (Alternative B, Enhanced Conventional Intersection) that is less complicated, cheaper to build and maintain, and more in line with Fairbanks driver expectations.



Alternative G2 Diamond Interchange with Cloverleaf

- ◆ This alternative has been dismissed from further consideration because the free-flow ramp has significant impacts on the surrounding land uses, and is not needed to meet capacity.