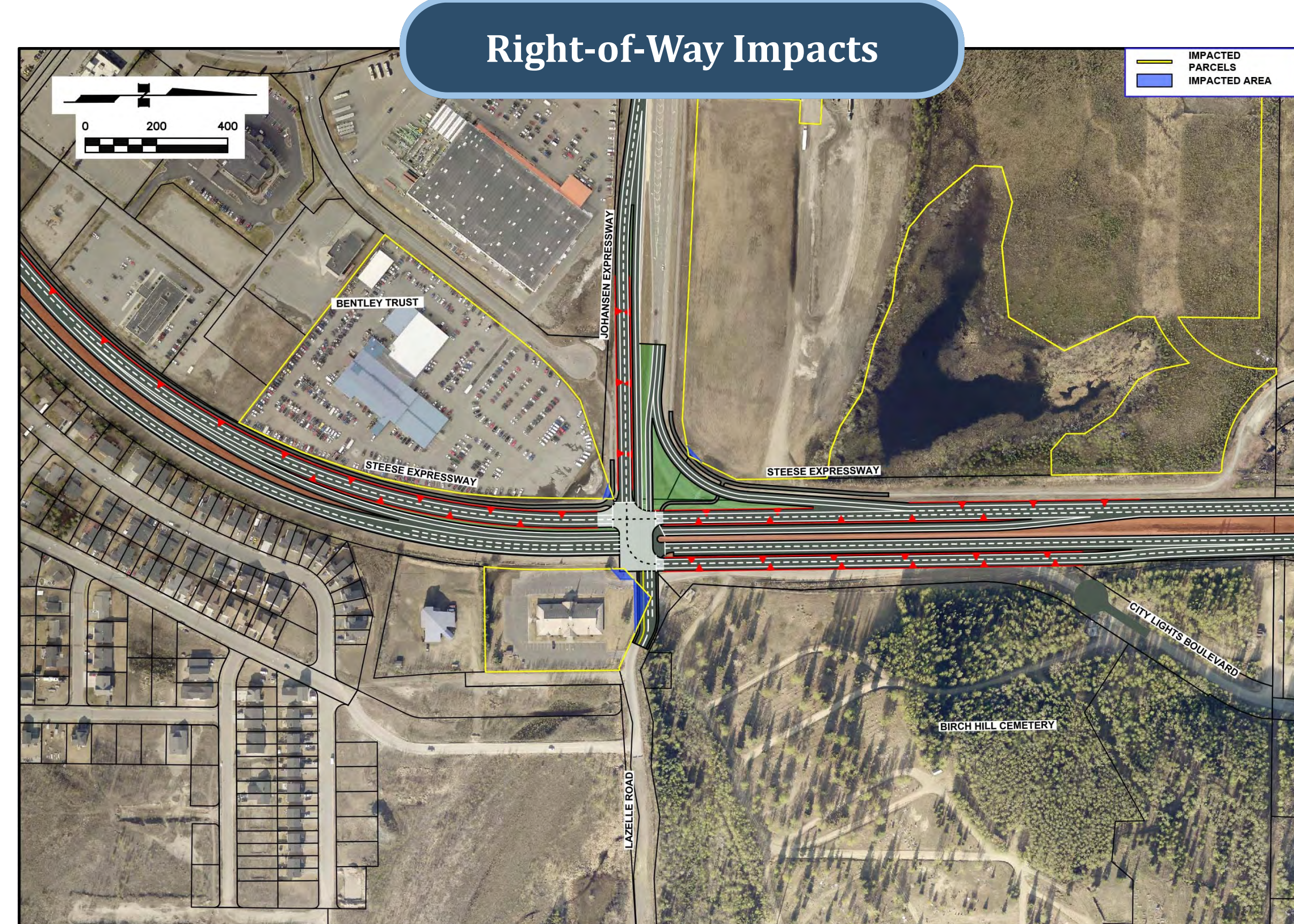
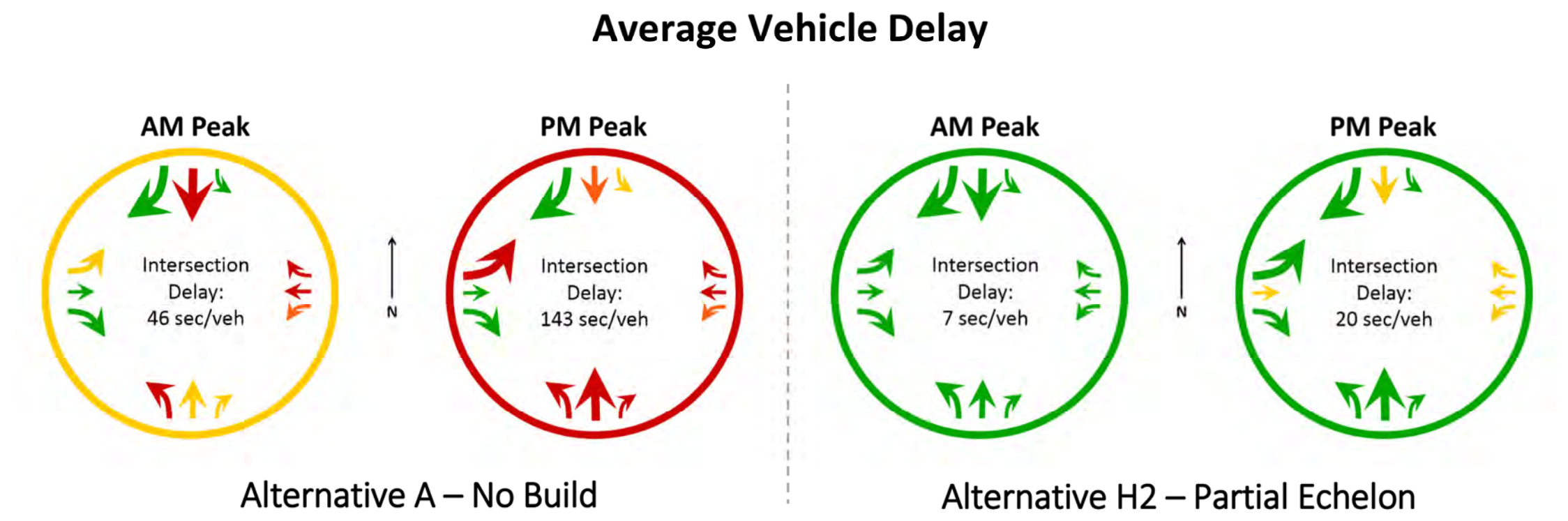
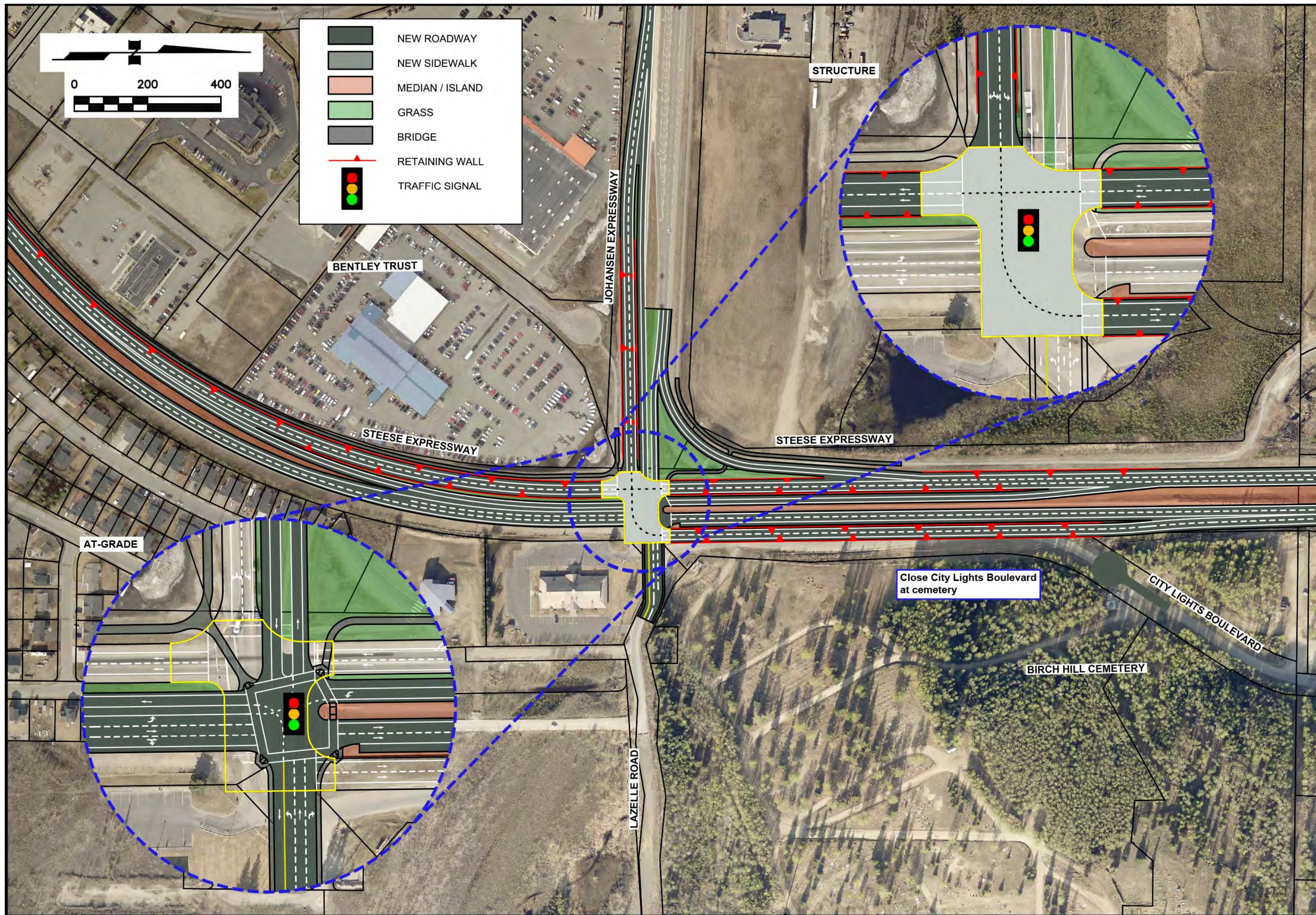




# STEESE EXPRESSWAY / JOHANSEN EXPRESSWAY INTERCHANGE

PROJECT NO. Z607320000/0002337

## Alternative H2 - Partial Echelon (Partial Interchange)



### Key Improvements

- ◆ Provides two intersections, one elevated above the other, like the Full Echelon.
- ◆ Traffic traveling south and continuing south on the Steese is elevated above the intersection, as is traffic headed from the Johansen to the Steese. All other movements are at ground level.

### Considerations

- ◆ The ground level intersection must accommodate more movements and therefore experiences more delay than the Full Echelon.
- ◆ Reduces vehicle/freight delay during all times of the day, but not as well as the Full Echelon.
- ◆ Pedestrians have significantly shorter distances to cross and much fewer traffic conflicts.