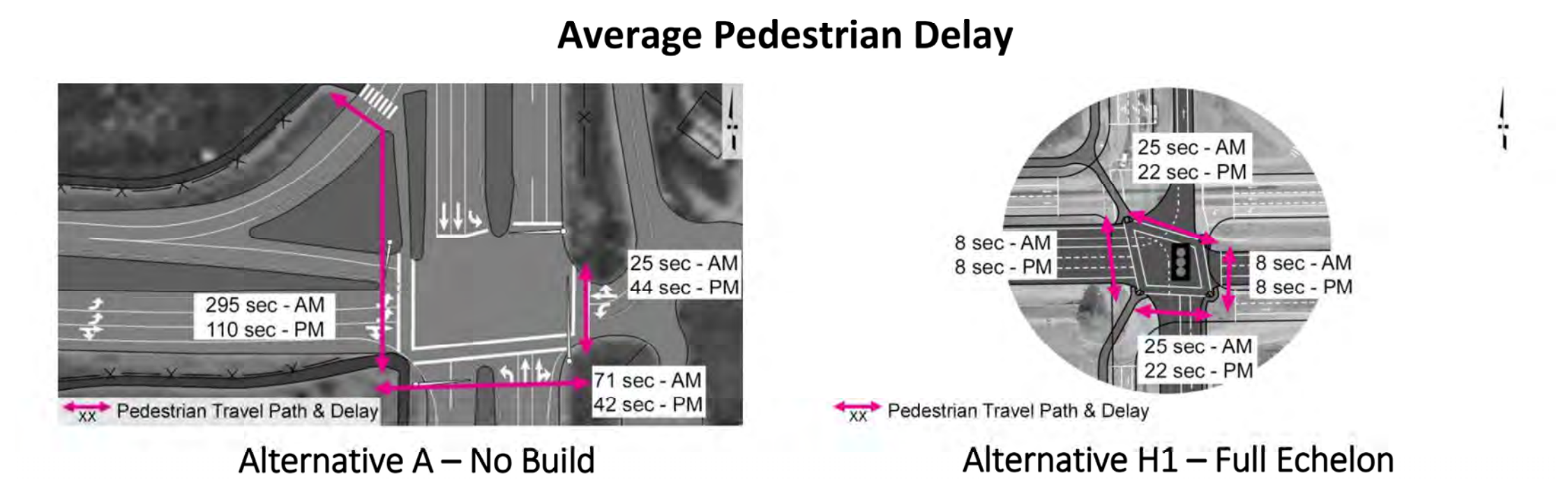
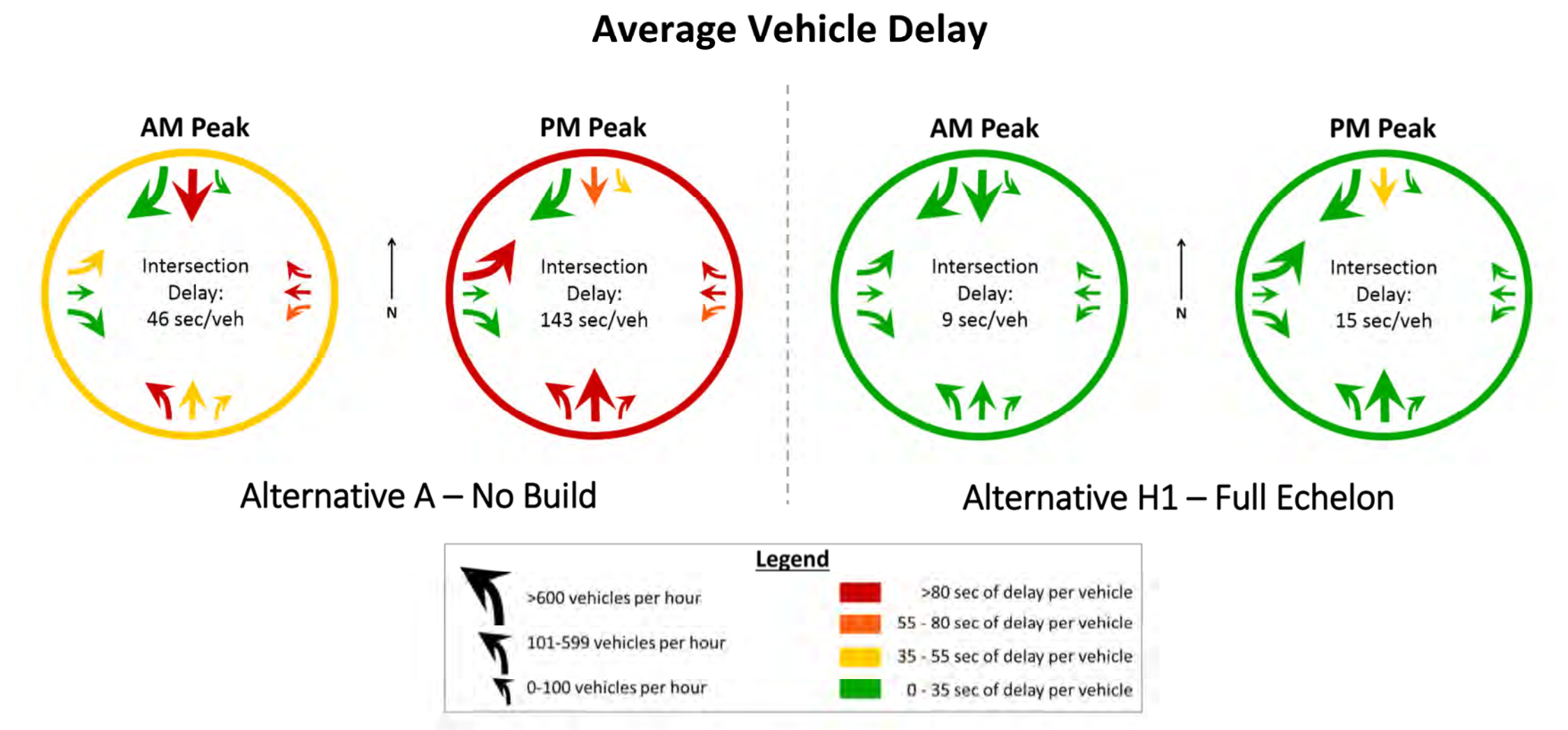
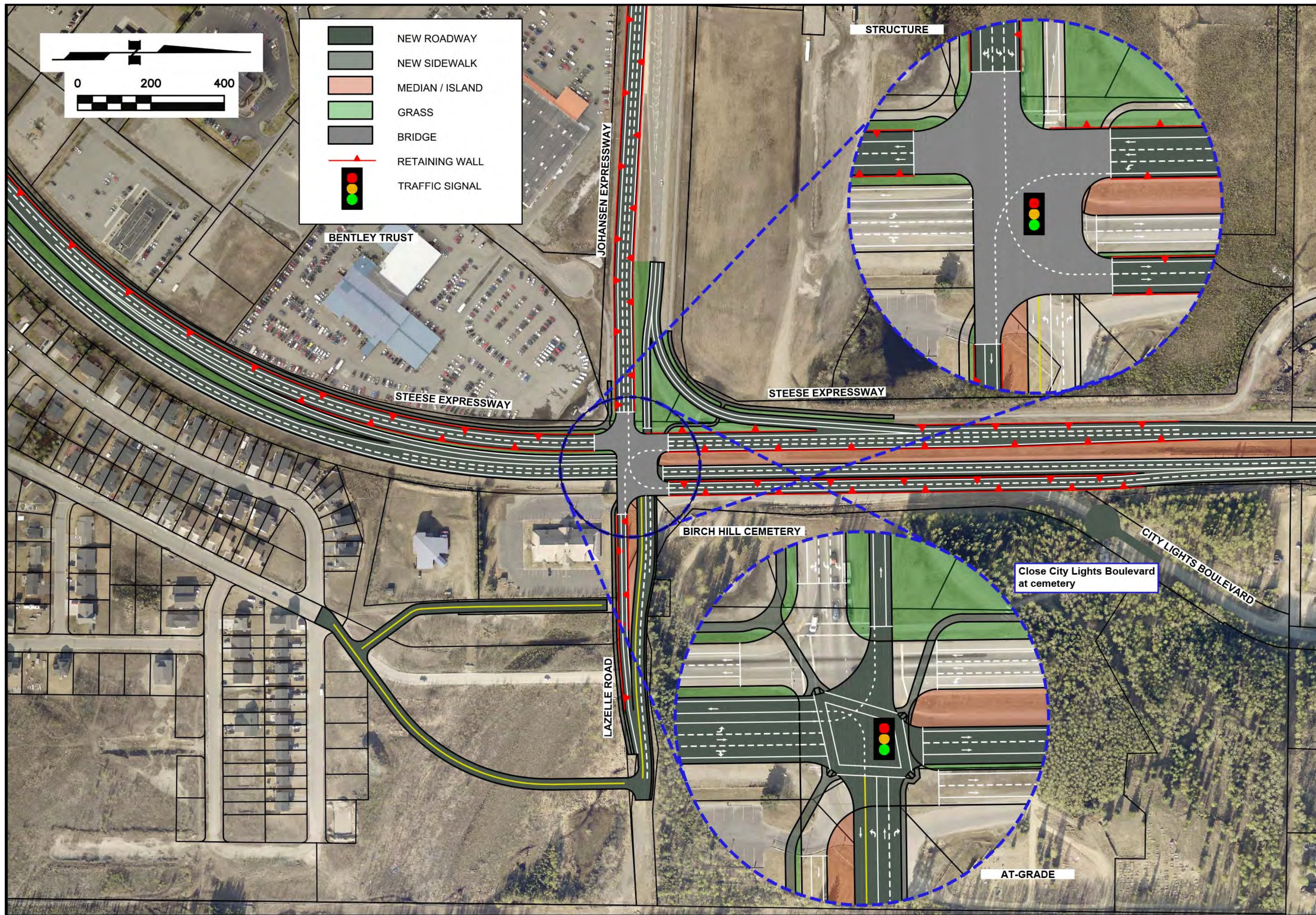




STEESE EXPRESSWAY / JOHANSEN EXPRESSWAY INTERCHANGE

PROJECT NO. Z607320000/0002337

Alternative H1 - Full Echelon (Partial Interchange)



Key Improvements

- High volume movements are separated into two intersections: one signal at ground level for both northbound and westbound traffic, and a second elevated signal for southbound traffic and eastbound traffic.

Considerations

- Reduces vehicle/freight delay during all times of the day.
- Pedestrians have significantly shorter distances to cross and much fewer traffic conflicts.
- Currently, only one echelon interchange exists in the U.S. in Aventura, Florida.

