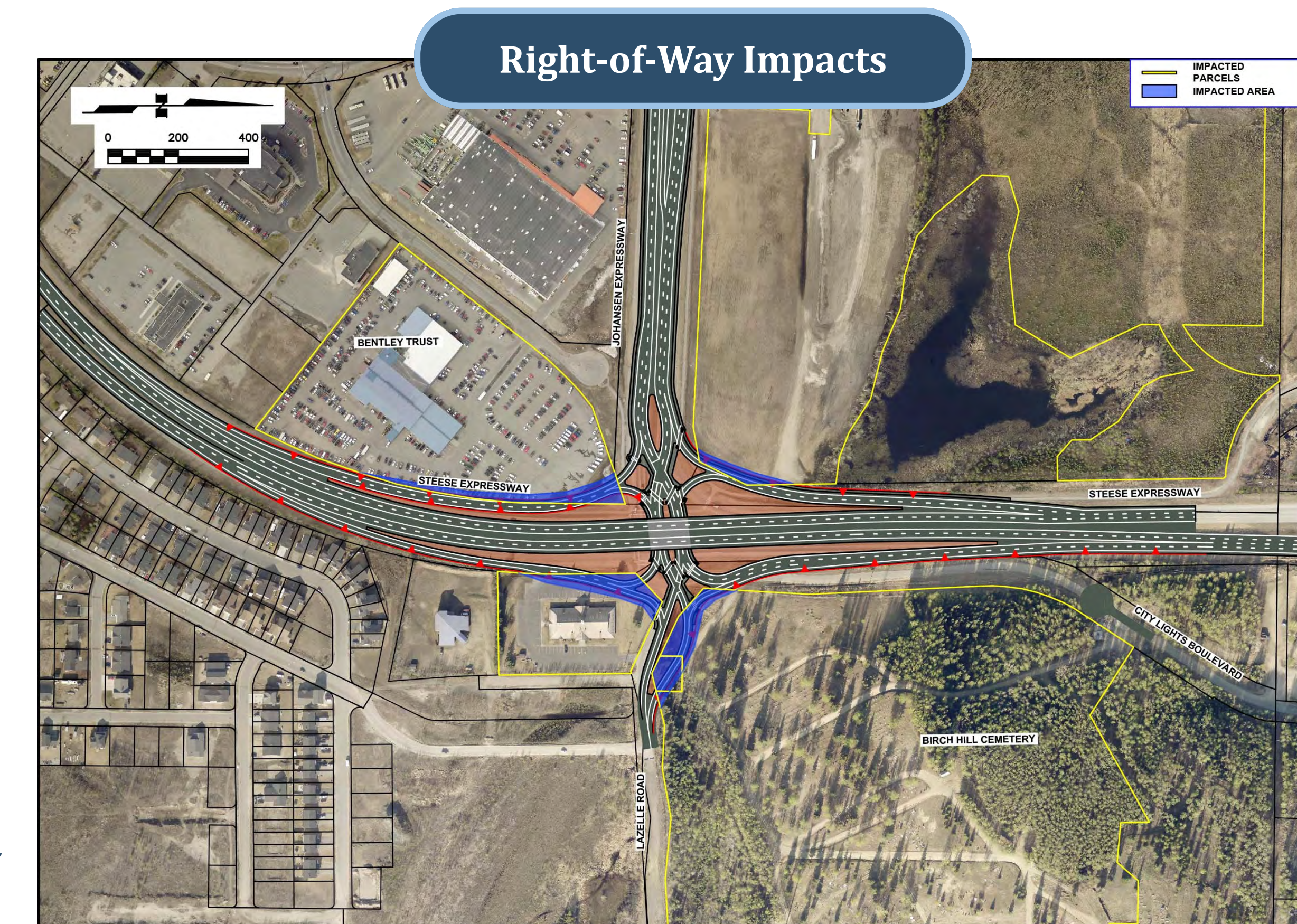
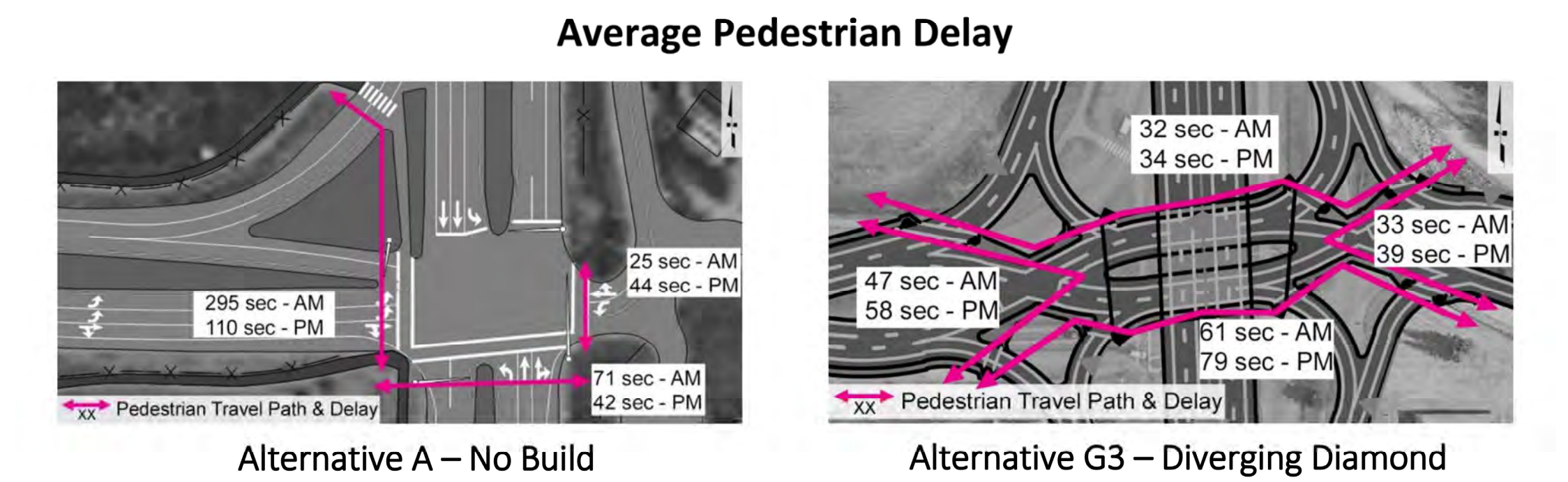
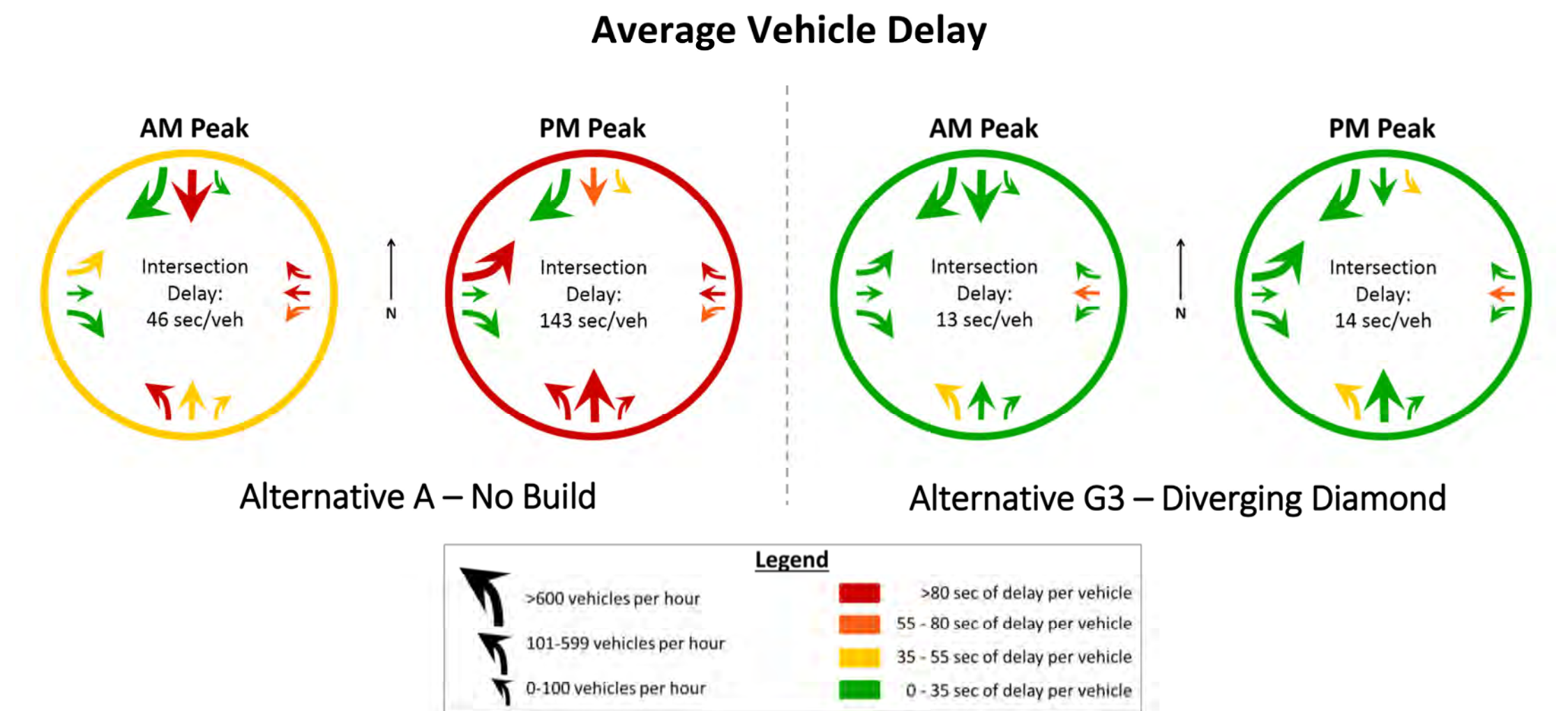
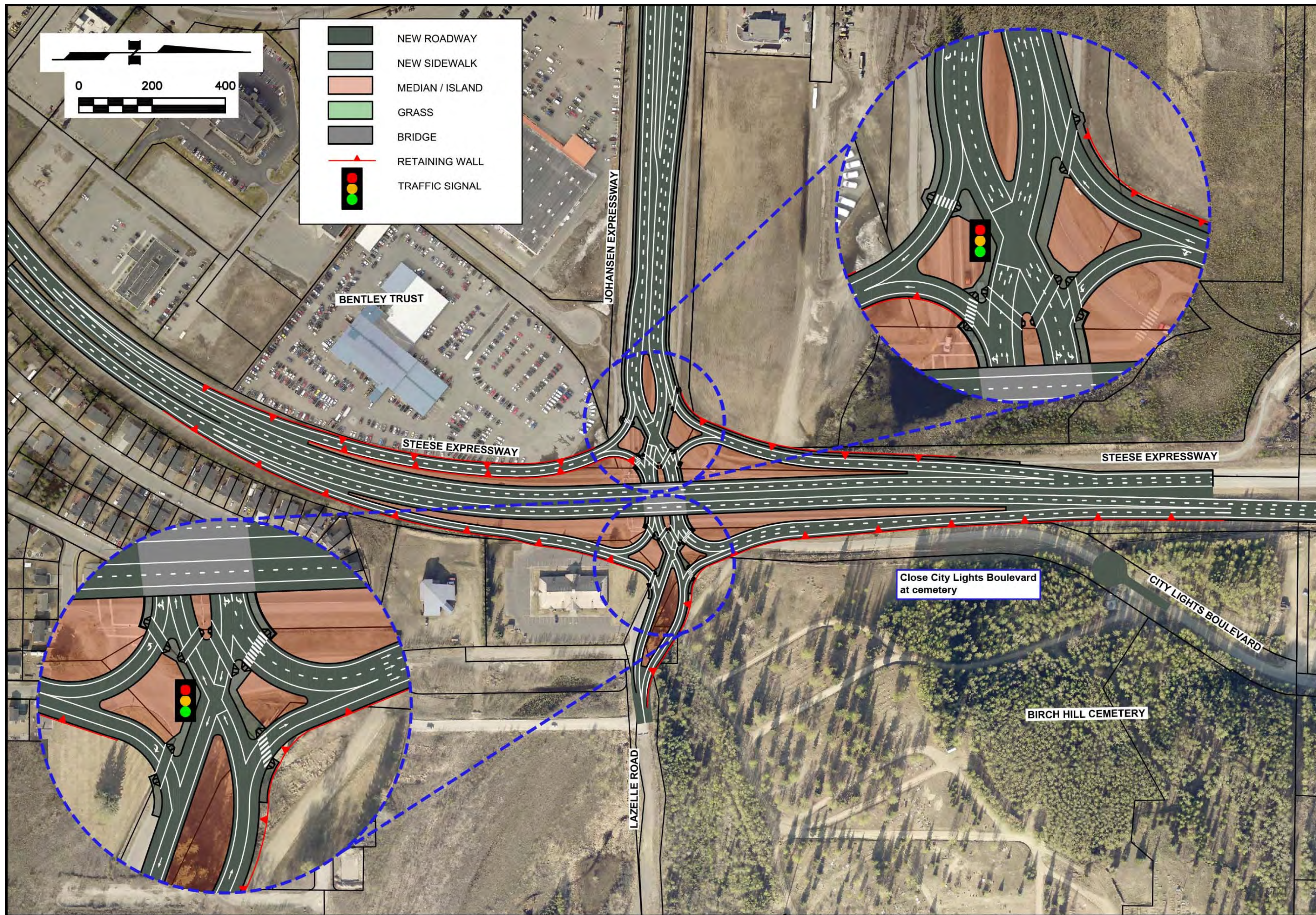




# STEESE EXPRESSWAY / JOHANSEN EXPRESSWAY INTERCHANGE

PROJECT NO. Z607320000/0002337

## Alternative G3 - Diverging Diamond (Full Interchange)



### Key Improvements

- ♦ Traffic traveling on the Steese is elevated above the intersection without stopping. All other movements interact at ground-level intersections.
- ♦ East-west traffic crosses over opposing traffic at the interchange, allowing turning traffic to flow without impeding through traffic.

### Considerations

- ♦ This alternative has the lowest vehicle delay of all the alternatives and, with careful design, can also accommodate pedestrians.
- ♦ Diverging Diamond interchanges are gaining popularity throughout the U.S.
- ♦ The first diverging diamond built in Alaska is at the Muldoon Road/Glenn Highway Interchange in Anchorage and has been operating well for about a year.