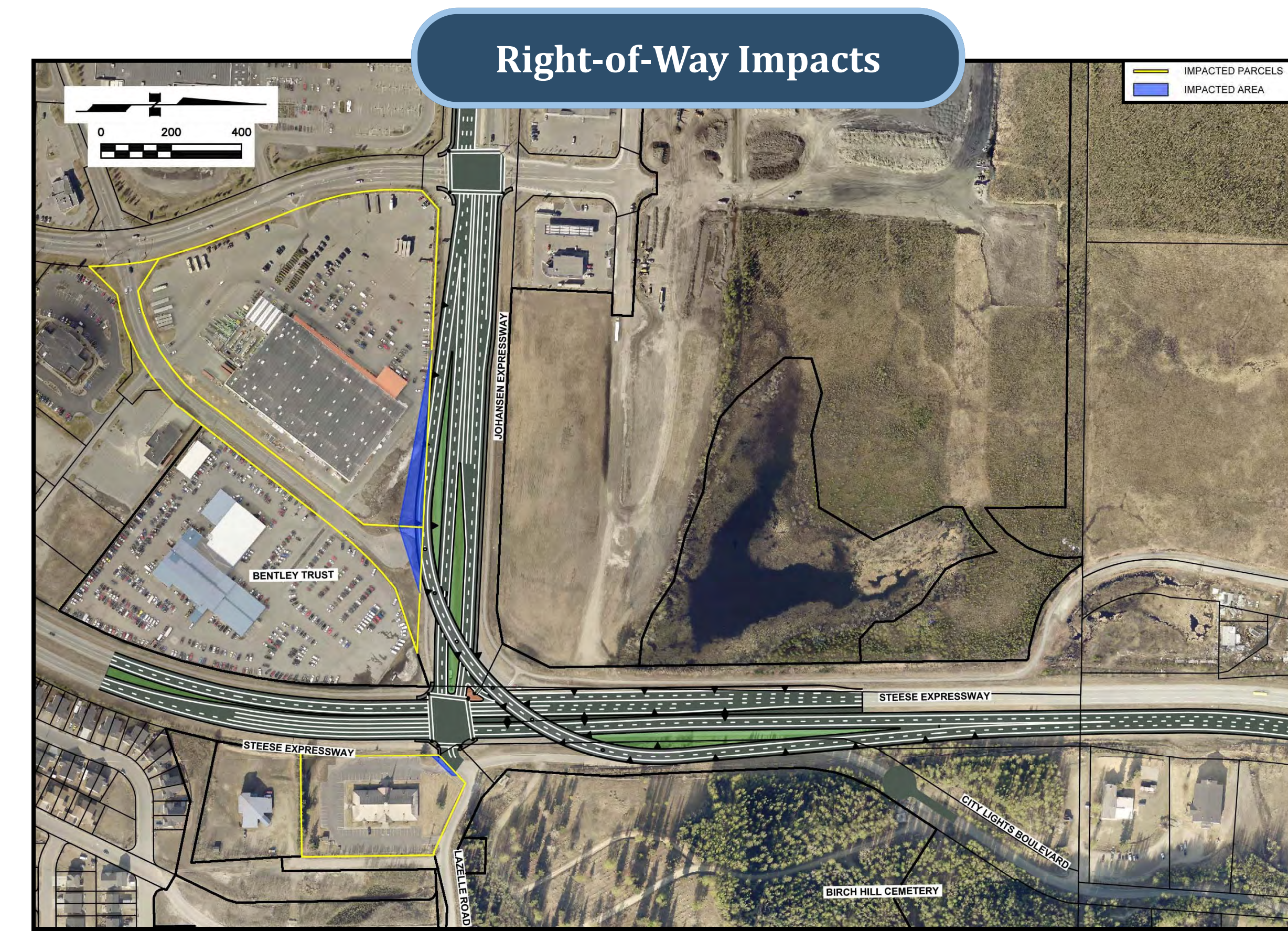
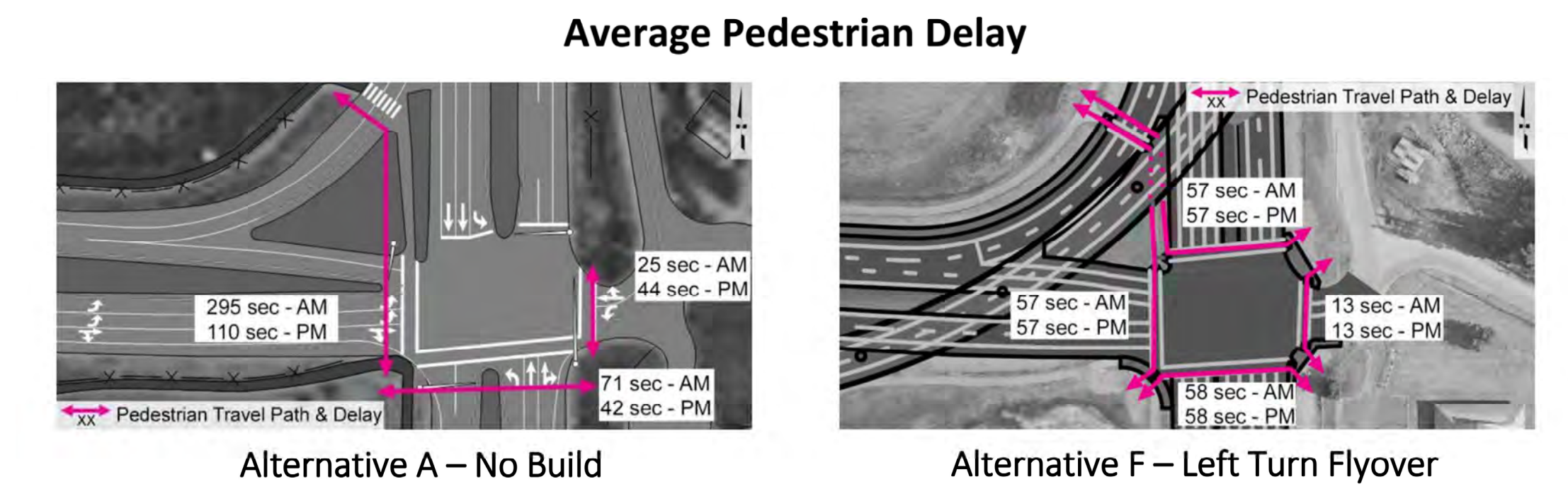
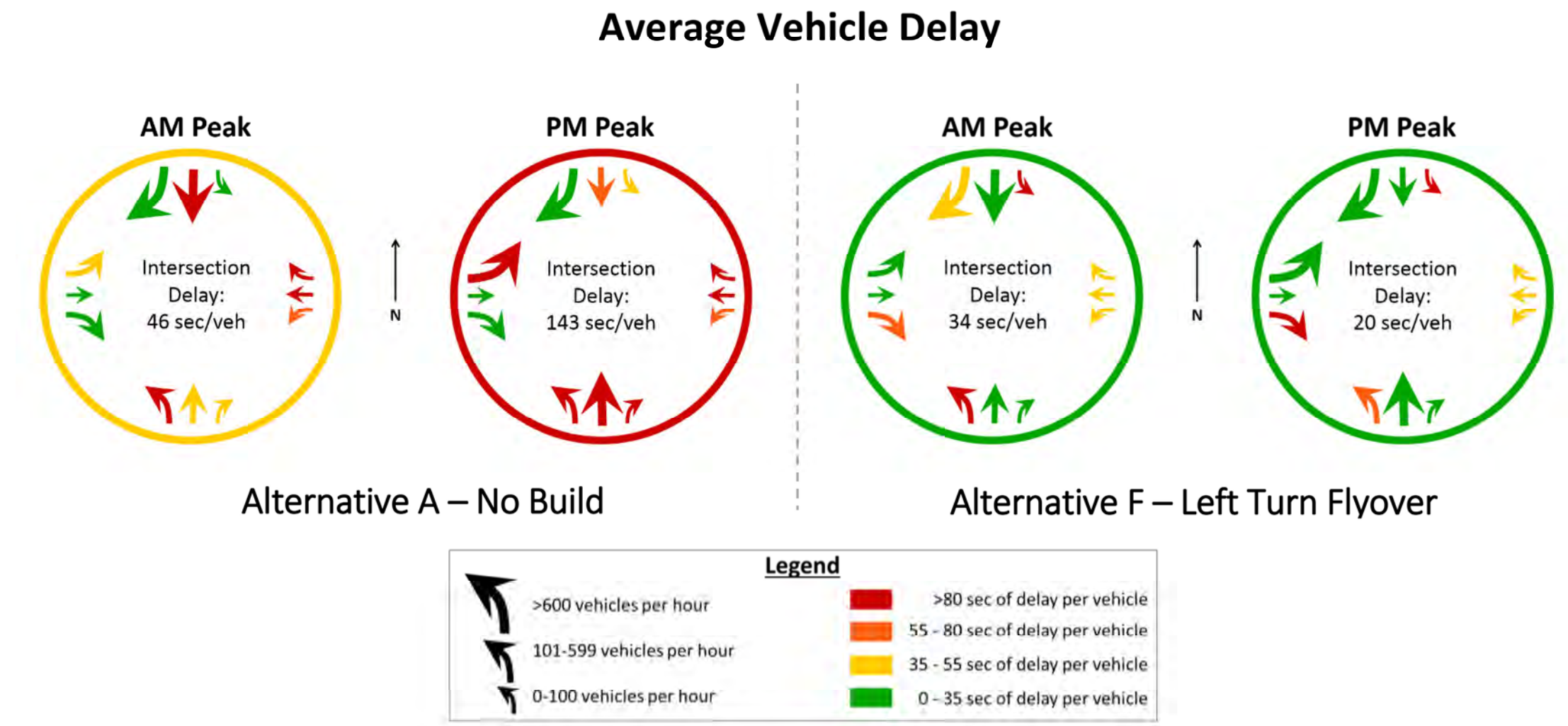
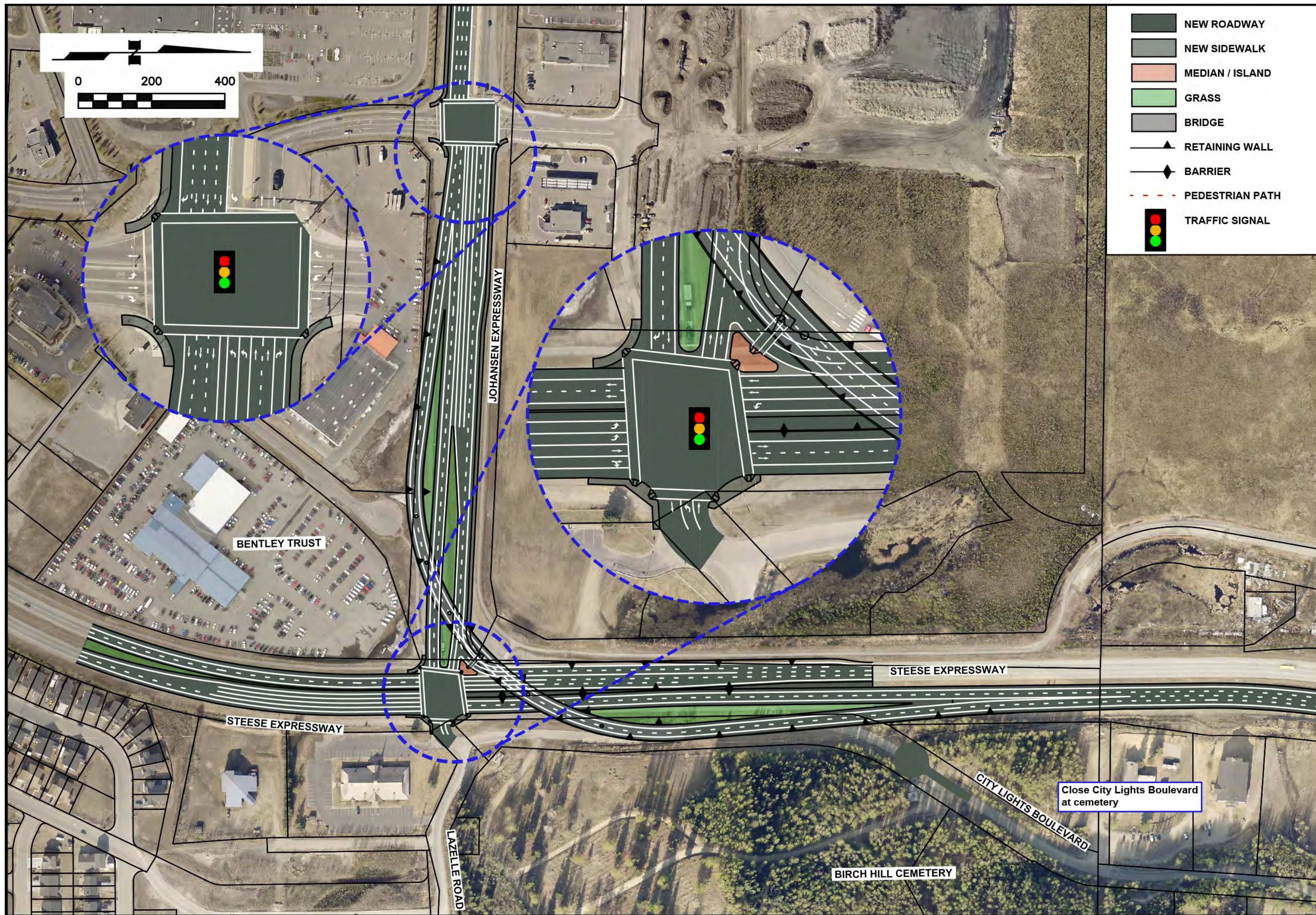




# STEESE EXPRESSWAY / JOHANSEN EXPRESSWAY INTERCHANGE

PROJECT NO. Z607320000/0002337

## Alternative F - Left Turn Flyover (Partial Interchange)



### Key Improvements

- ◆ Traffic turning left from the Johansen to the Steese bypass the intersection without stopping using a two-lane bridge over the intersection.
- ◆ Two lanes are provided for northbound traffic from the Steese turning left onto the Johansen.
- ◆ Southbound traffic turning right onto the Johansen from the Steese would stop at the signal and have two turning lanes.

### Considerations

- ◆ Focuses on reducing vehicle/freight delay during the evening commute.
- ◆ Pedestrians no longer interact with left turning vehicles on Johansen but have longer crossing distances.