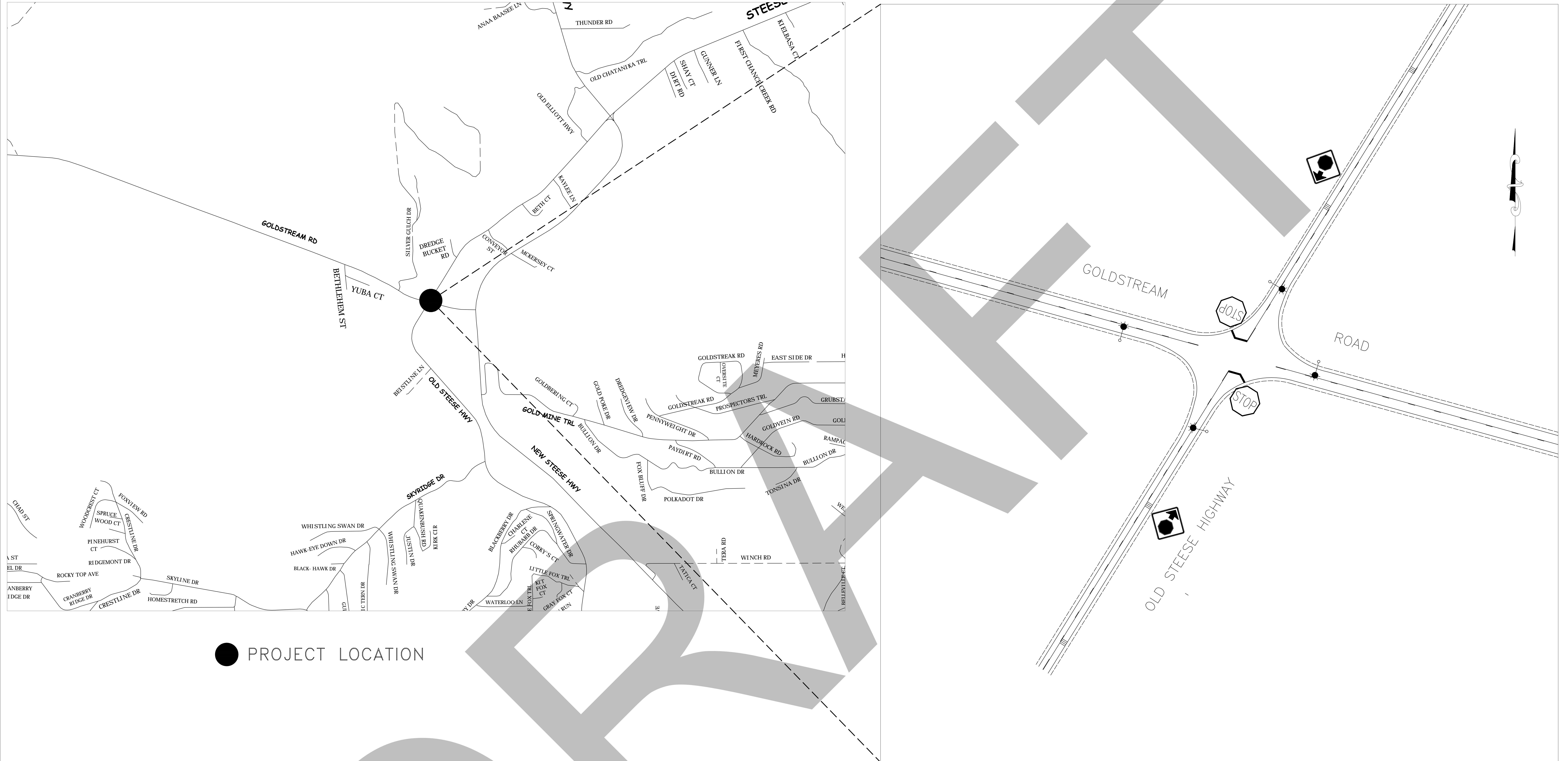
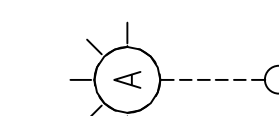



OLD STEESE HWY & GOLDSTREAM ROAD



● PROJECT LOCATION

LEGEND

-  EXISTING LIGHT POLE
-  NEW LIGHT POLE
-  EDGE OF PAVEMENT
-  PAINT STRIPING
-  RUMBLE STRIPS 200' AND 400' IN ADVANCE OF STOP BAR
-  24" STOP BAR