



Project Description

The Alaska Department of Transportation and Public Facilities (DOT&PF) is proposing to design and construct upgrades to the Old Steese Highway between Trainor Gate Road and the Johansen Expressway. The primary objectives of this state funded project are to improve safety and capacity for motorized and non-motorized users.

Key Project Elements Include:

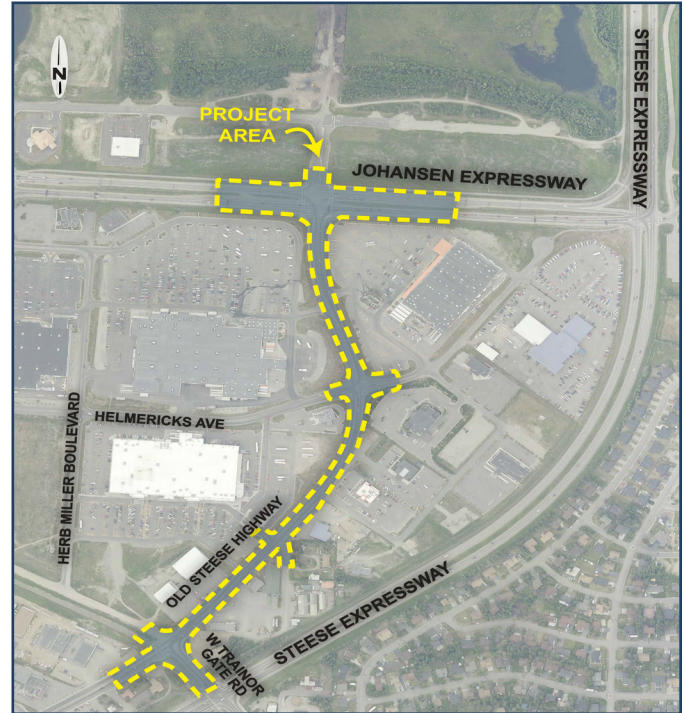
- Bicycle and pedestrian facilities
- Roadway and intersection improvements

Initial Concepts:

The project team is considering various roadway concepts that include 3-, 4-, and 5-lane options with roundabouts and signalized intersections. Please go to www.oldsteese.com to view the preliminary concepts and provide comments and ideas that will help us develop the best alternative.

Schedule

Survey & Mapping.....	Summer 2014
Environmental.....	Fall 2014 – Spring 2015
Preliminary Engineering.....	Fall 2014 – Spring 2015
Final Design & Permitting.....	Spring 2015 – Spring 2016
Right-of-Way/Easements.....	Spring 2015 – Spring 2016
Construction.....	Summer 2016



Above: The Old Steese Upgrade project area from the Johansen Expressway to Trainor Gate Road.

We welcome your input!



Email the project team with your thoughts and ideas. We will add your email and/or mailing address to the project mailing list, and let you know the dates and locations of future public meetings.

Submit comments to:

Rachel Steer, Public Involvement Manager
oldsteese@dowlhkm.com | 907-374-0275

www.oldsteese.com