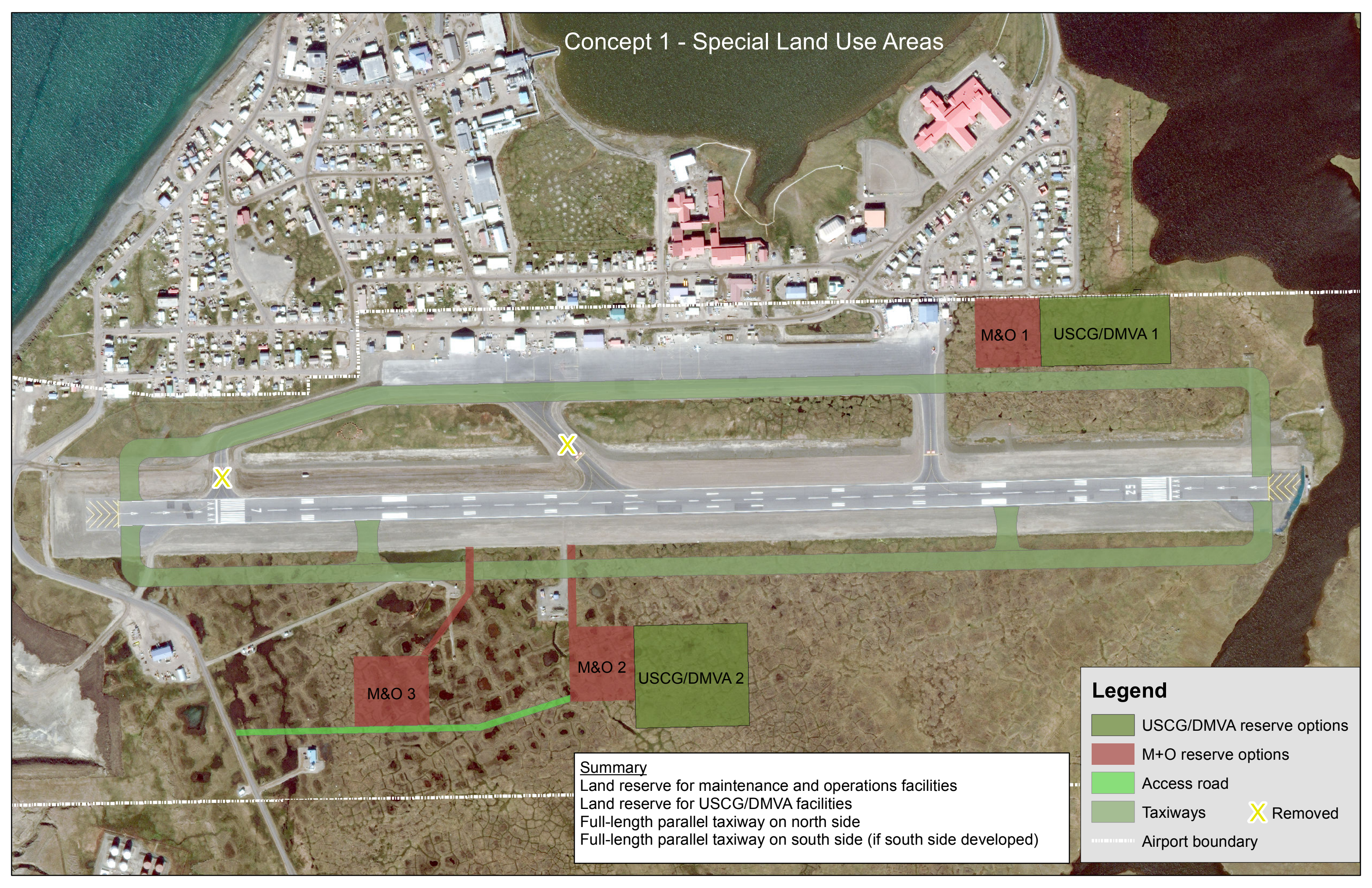


Concept 1 - Special Land Use Areas



M&O 1

USCG/DMVA 1

M&O 3

M&O 2

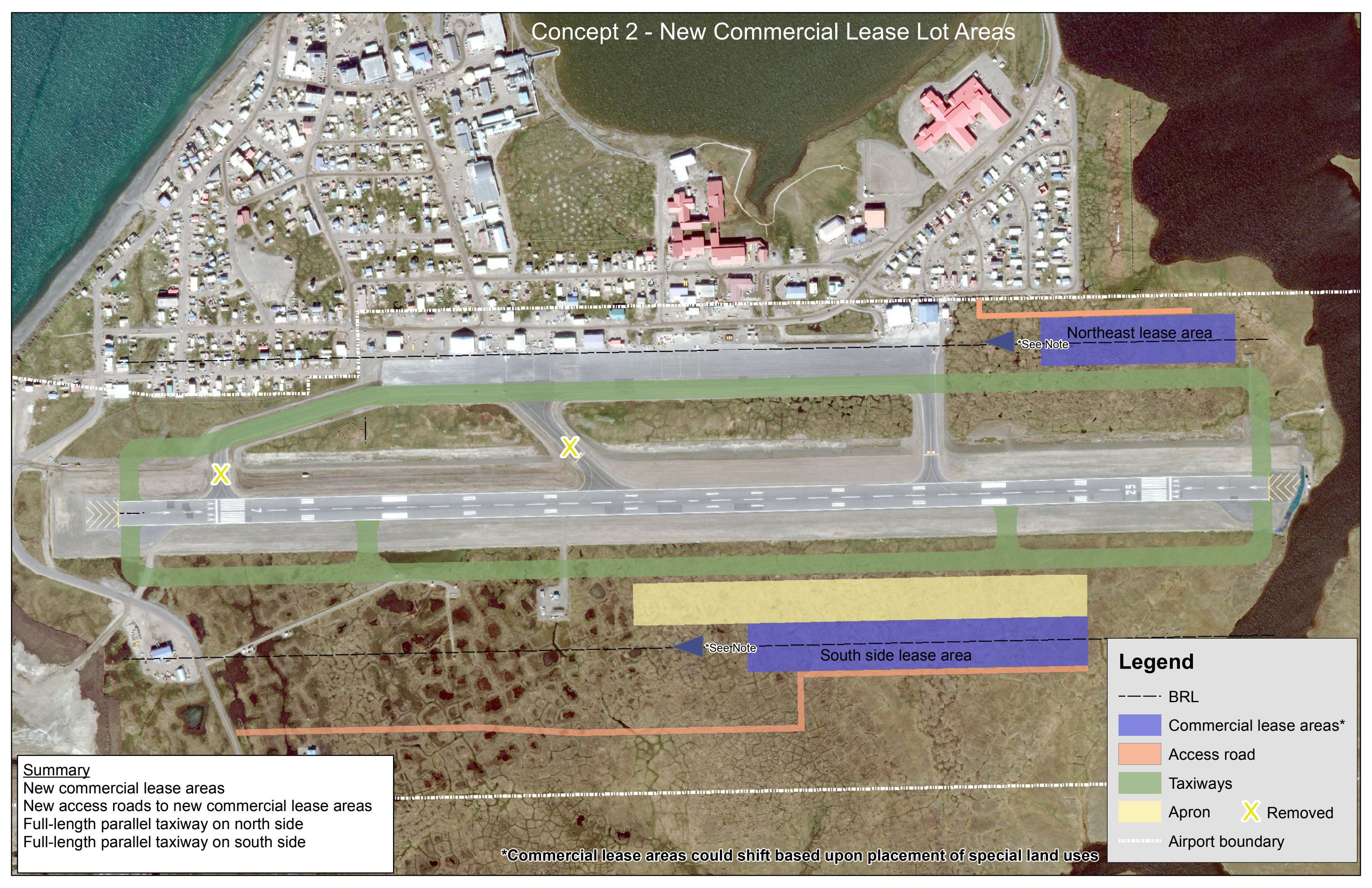
USCG/DMVA 2

Summary
Land reserve for maintenance and operations facilities
Land reserve for USCG/DMVA facilities
Full-length parallel taxiway on north side
Full-length parallel taxiway on south side (if south side developed)

Legend

- USCG/DMVA reserve options
- M+O reserve options
- Access road
- Taxiways
- Airport boundary
- Removed

Concept 2 - New Commercial Lease Lot Areas



Northeast lease area

*See Note

South side lease area

*See Note

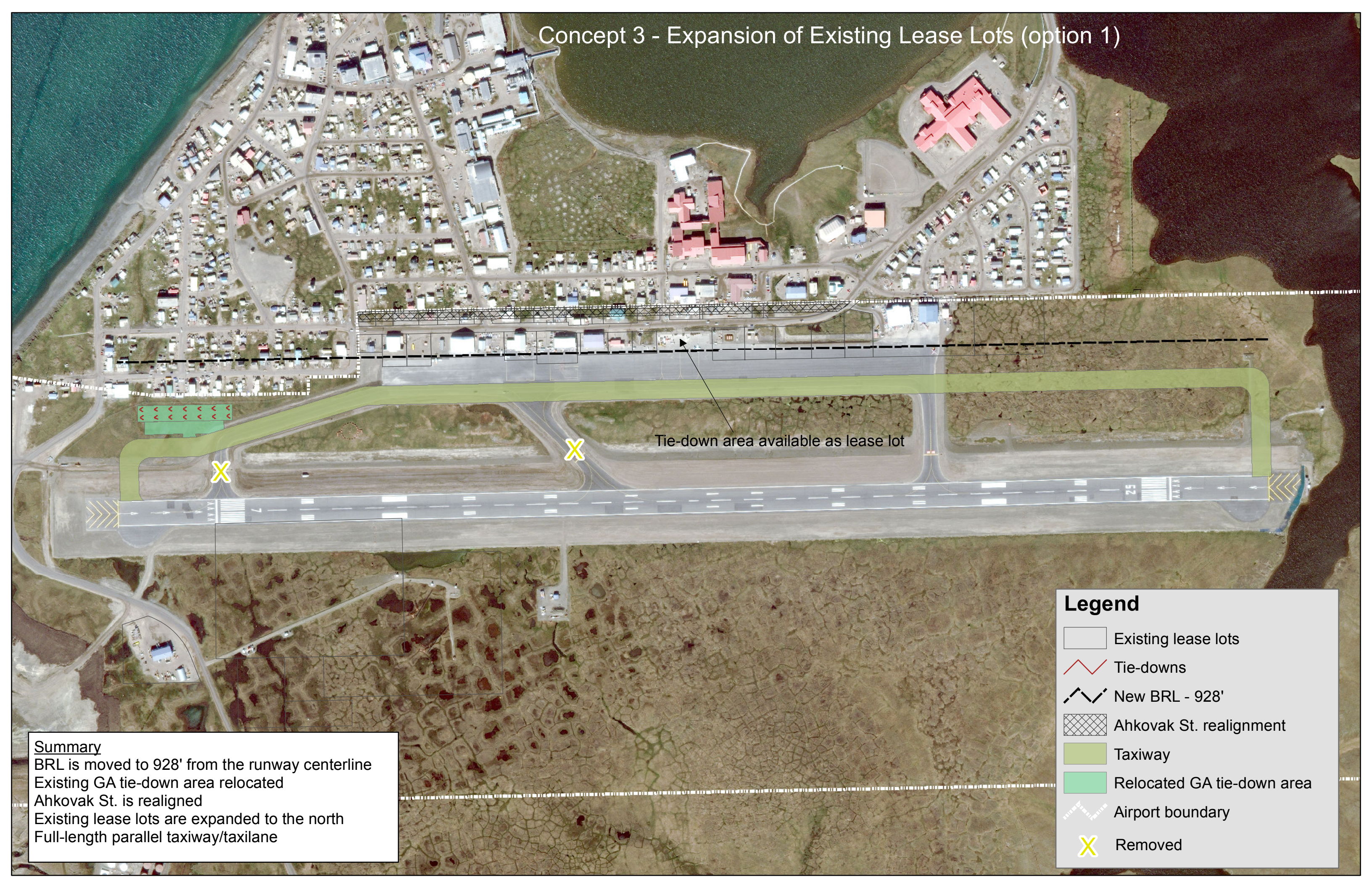
Legend

- BRL
- Commercial lease areas*
- Access road
- Taxiways
- Apron X Removed
- Airport boundary

Summary
 New commercial lease areas
 New access roads to new commercial lease areas
 Full-length parallel taxiway on north side
 Full-length parallel taxiway on south side

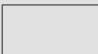




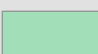


*Commercial lease areas could shift based upon placement of special land uses

Concept 3 - Expansion of Existing Lease Lots (option 1)



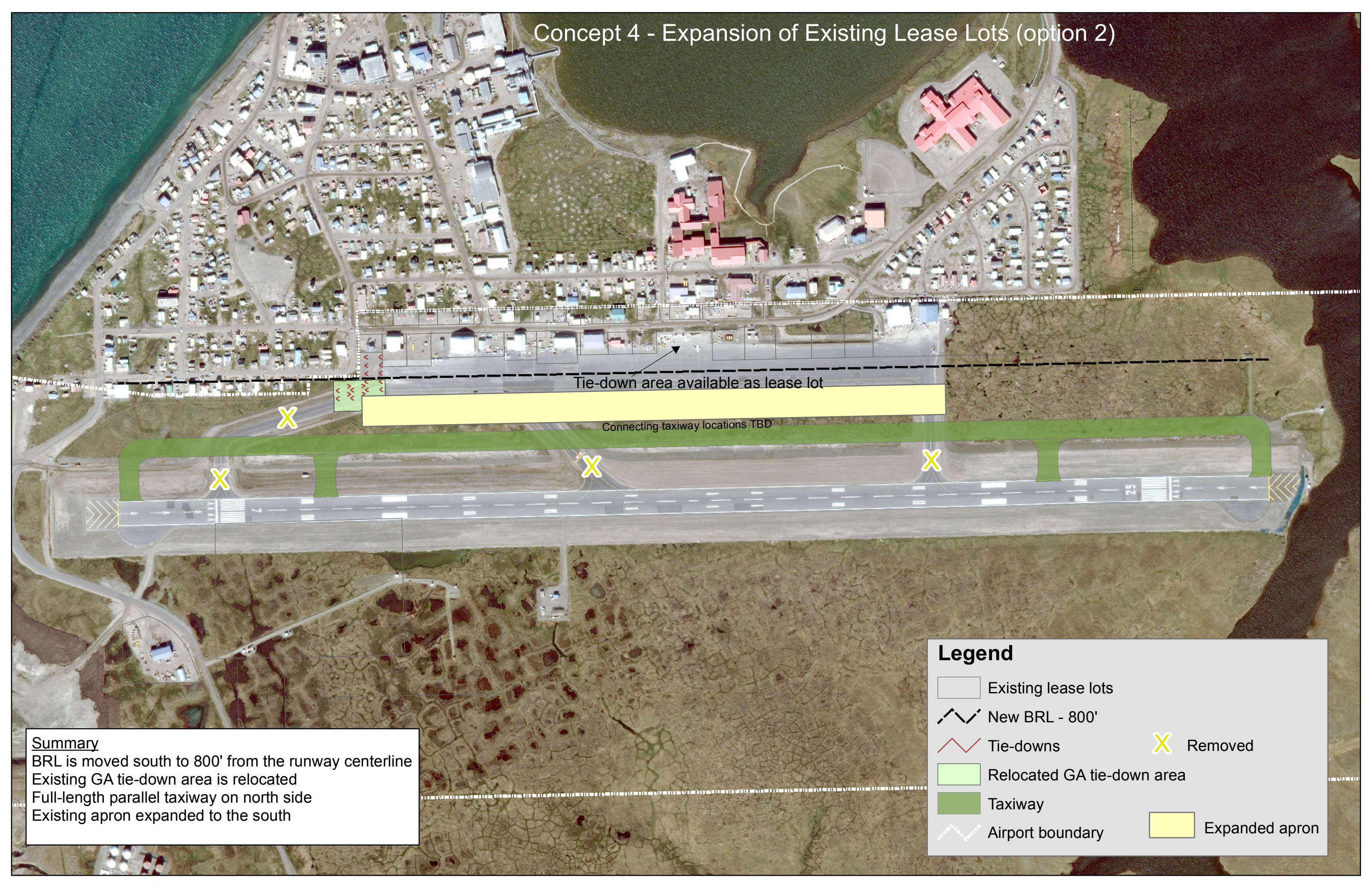
Tie-down area available as lease lot

Legend

-  Existing lease lots
-  Tie-downs
-  New BRL - 928'
-  Ahkovak St. realignment
-  Taxiway
-  Relocated GA tie-down area
-  Airport boundary
-  Removed

Summary
 BRL is moved to 928' from the runway centerline
 Existing GA tie-down area relocated
 Ahkovak St. is realigned
 Existing lease lots are expanded to the north
 Full-length parallel taxiway/taxilane


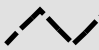





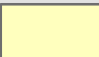
Concept 4 - Expansion of Existing Lease Lots (option 2)



Tie-down area available as lease lot

Connecting taxiway locations TBD

Legend

-  Existing lease lots
-  New BRL - 800'
-  Tie-downs
-  Relocated GA tie-down area
-  Taxiway
-  Airport boundary
-  Removed
-  Expanded apron

Summary
 BRL is moved south to 800' from the runway centerline
 Existing GA tie-down area is relocated
 Full-length parallel taxiway on north side
 Existing apron expanded to the south