

STATE	PROJECT DESIGNATION	YEAR	SHEET NO.	TOTAL SHEETS
ALASKA	0670001/Z625410000	2020	A1	264
CDS ROUTE:	150040	MILEPOINT:	0	TO 0.254
CDS ROUTE:	152000	MILEPOINT:	0.654	TO 1.033

STATE OF ALASKA
DEPARTMENT OF TRANSPORTATION
&
PUBLIC FACILITIES

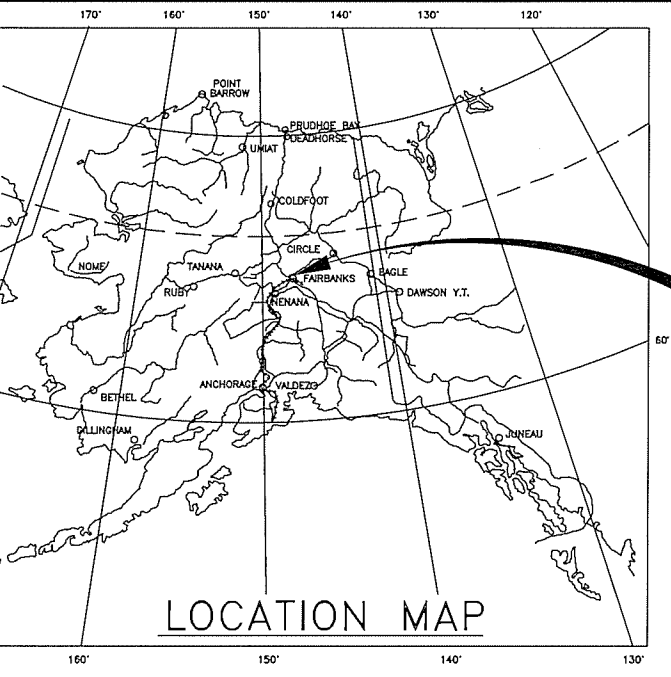
PROPOSED HIGHWAY PROJECT
3RD STREET WIDENING
0670001/Z625410000

GRADING, DRAINAGE, PAVING, UTILITIES, ILLUMINATION, SIGNALIZATION,
INTERCONNECT, & LANDSCAPE

SHEET NO.	DESCRIPTION
A1	TITLE SHEET
A2-A3	LEGEND/ABBREVIATIONS & GENERAL NOTES
A4-A8	SURVEY CONTROL
B1-B3	TYPICAL SECTIONS
C1-C2	ESTIMATE OF QUANTITIES
D1-D3	SUMMARY TABLES
E1-E6	MISCELLANEOUS DETAILS
F1-F16	PLAN & PROFILE
G1-G20	GRADING PLANS
H1-H17	SIGNING/STRIPING
H18-H34	TRAFFIC SIGNAL PLANS
H100-H116	ILLUMINATION
J1-J19	INTERCONNECT
L1-L2	LANDSCAPING
Q100-Q102	EROSION SEDIMENT CONTROL PLANS
T100-T105	TRAFFIC CONTROL/DETOUR PLANS
T106-T111	TEMPORARY SIGNAL PLANS
U1-U9	STORM DRAIN
U101-U110	WATER AND SEWER
U201-U212	ELECTRIC UTILITIES/VAULT DETAILS
U301-U315	COMMUNICATION & CABLE UTILITIES/VAULT DETAILS
U400-U412	SECONDARY UTILITIES
U413-U422	SERVICE ENTRANCE DETAILS
V1-V46	ALASKA STANDARD PLAN DETAILS
V47-V50	CITY OF FAIRBANKS DETAILS

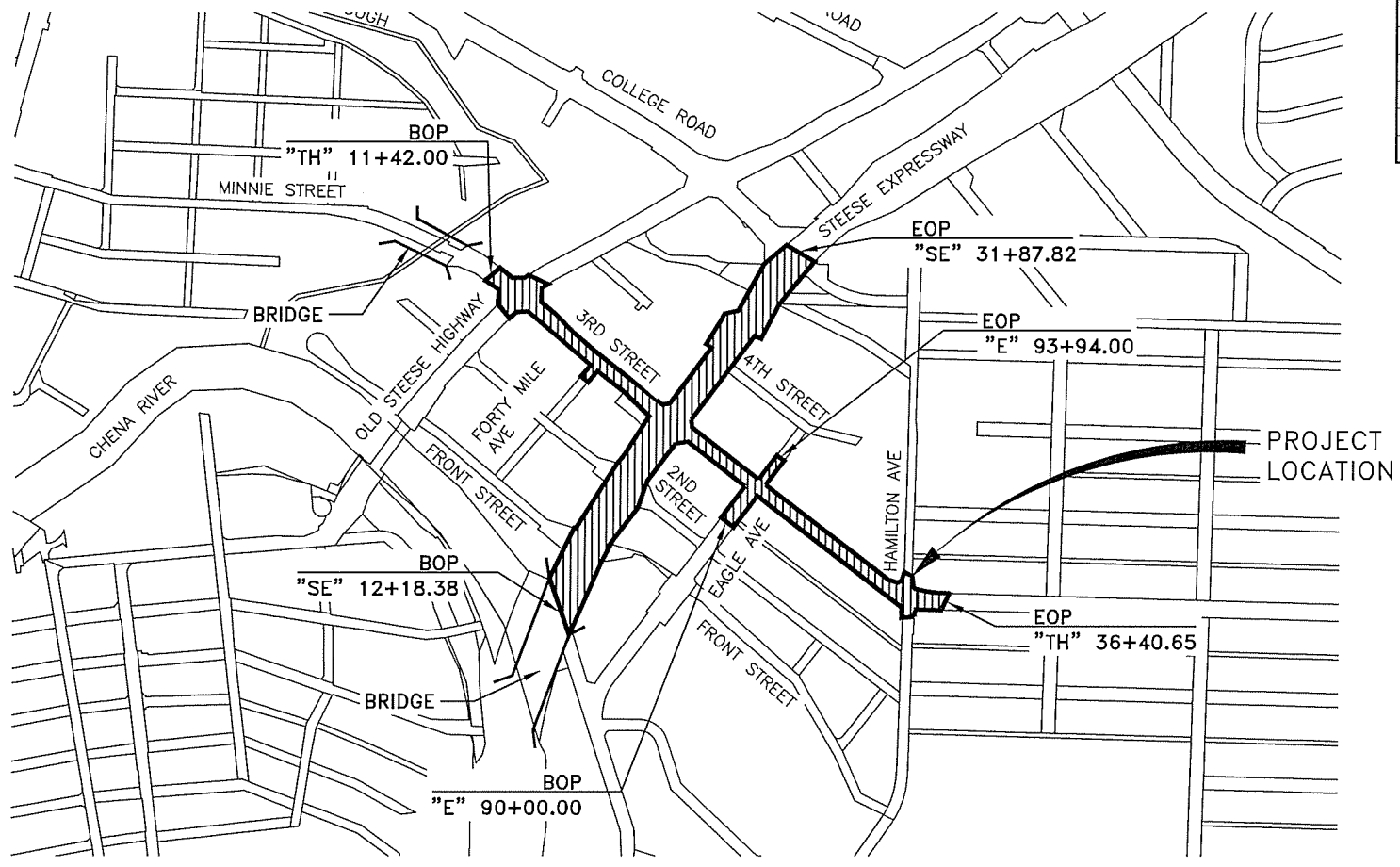
THE FOLLOWING APPLY TO THIS PROJECT:
ALASKA STANDARD PLANS
F-01.04, G-00.05, G-05.11S, G-10.20, G-14.01, G-20.12, G-32.00, I-20.20,
I-21.12, I-22.11, L-03.11, L-23.02, L-25.01, L-30.11, S-00.12, S-01.02,
S-05.02, S-20.10, S-23.00, S-30.05, S-31.02, S-32.02, T-20.04, T-21.04,
T-22.04, T-23.01, T-30.12, T-31.01, T-52.21, T-54.10, T-55.10, T-56.10
CITY OF FAIRBANKS STANDARD DETAILS
CD-1, CD-2, SD-1, SD-2

DESIGNATIONS	3RD STREET	STEESE EXPWY
ADT (2015)	13,302	27,576
ADT (2030)	13,367	30,864
ADT (2040)	13,950	33,989
DHV (%)	10.60%	10.60%
PERCENT TRUCKS (T)	3%	7%
DIRECTIONAL SPLIT (D)	45/55	45/55
DESIGN SPEED (V)	30 MPH	50 MPH
DESIGN ESAL'S (2040)	1,620,200	5,911,547



PROJECT LOCATION

As Advertised
December 29, 2020
Northern Region



PROJECT LOCATION

VICINITY MAP

	3RD STREET	STEESE EXPWY
WIDTH OF PAVEMENT	95.5 FT	102.5 FT
LENGTH OF GRADING	2,498 FT	1,969 FT
LENGTH OF PAVING	2,498 FT	1,969 FT
LENGTH OF PROJECT	2,498 FT	1,969 FT

RUSSELL JOHNSON, P.E., DOT&PF PROJECT MANAGER

STATE OF ALASKA
DEPARTMENT OF TRANSPORTATION
&
PUBLIC FACILITIES

APPROVED BY: *[Signature]* DATE 11/25/2020

Sarah E. Schacher, P.E.
Professional Engineer, Northern Region

ACCEPTED FOR CONSTRUCTION: *[Signature]* DATE 11/25/2020

Ryan F. Anderson, P.E.
Regional Director, Northern Region

NO.	DATE	REVISION	STATE	PROJECT DESIGNATION	YEAR	SHEET NO.	TOTAL SHEETS
			ALASKA	0670001/Z625410000	2020	T100	T111

GENERAL TRAFFIC CONTROL/PHASING NOTES:

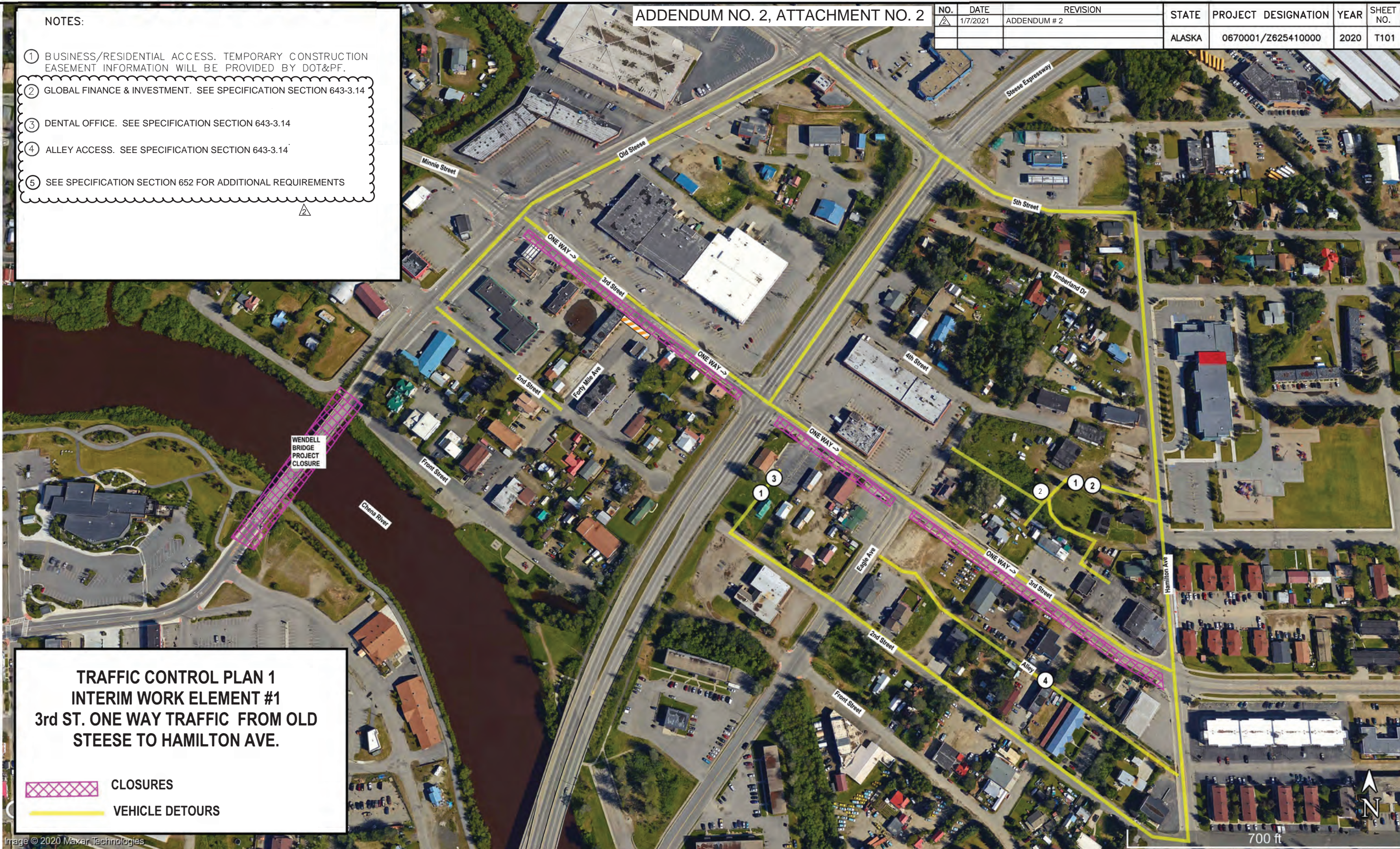
1. REFERENCE 643 & 652 SPECIFICATIONS FOR ALLOWED CLOSURES, TRAFFIC RESTRICTIONS, AND PEDESTRIAN REQUIREMENTS.
2. THESE TRAFFIC CONTROL PLANS ARE GENERIC IN NATURE. CONTRACTOR TO PROVIDE DETAILED TRAFFIC CONTROL PLANS TO ENGINEER FOR APPROVAL.
3. MACS TRANSIT BUS BROWN LINE ROUTES THROUGH PROJECT LIMITS. BUS ARRIVE AND DEPART SCHEDULE: MON THROUGH FRI 7:00 AM – 9:10 PM; SAT 9:15 AM – 6:40 PM.
4. TEMPORARY PEDESTRIAN PATHWAYS SHALL BE PROVIDED TO ALL BUS STOPS AND OTHER AREAS AND SHALL BE A MINIMUM OF 5 FEET WIDE, EXCEPT AS DIRECTED. PATHS SHALL BE CONSTRUCTED, REMOVED, AND RECONSTRUCTED AS REQUIRED AND SHALL BE TOPPED WITH A MINIMUM OF 2.5" RECYCLED ASPHALT COMPACTED TO 94%. ALL PATHS SHALL BE SEPARATED FROM THE WORK BY A FENCE.
5. EXISTING SIGNS WHICH CONFLICT WITH CONSTRUCTION SIGNING SHALL BE COVERED DURING PROJECT. COORDINATE REMOVAL WITH CITY OF FAIRBANKS PUBLIC WORKS DEPARTMENT.
6. BUSINESSES WITHIN THE PROJECT LIMITS MAY HAVE DELIVERIES AND GARBAGE PICK-UP DURING NON-BUSINESS HOURS. CONTRACTOR SHALL CONTACT ALL BUSINESSES IN THE PROJECT AND COORDINATE WITH THEM TO ENSURE ACCESS.
7. PARKING LOTS AND DRIVEWAYS ADJACENT TO AN EXCAVATION SHALL BE RAMPED TO PROVIDE ACCESS. DELINEATE WITH CONES.
8. WHEN STREETS ARE RESTRICTED TO ONE LANE, THE MINIMUM CLEAR WIDTH SHALL BE 12' UNLESS OTHERWISE SPECIFIED ON AN APPROVED TRAFFIC CONTROL PLAN (TCP) OR AS DIRECTED BY THE ENGINEER.
9. ACCESS SHALL BE MAINTAINED FOR THE PASSAGE OF EMERGENCY VEHICLES THROUGH THE PROJECT.
10. ACCESS SHALL BE PROVIDED TO COMMERCIAL PROPERTIES DURING THEIR BUSINESS HOURS AND TO RESIDENTIAL PROPERTIES CONTINUOUSLY. CLOSURES SHALL NOT OCCUR WITHOUT PRIOR WRITTEN APPROVAL OF THE ENGINEER. MINIMUM OF 48 HOURS PRIOR TO IMPLEMENTATION OF AN APPROVED CLOSURE.
11. ALTERNATE ACCESS MAY ALSO BE USED AS PART OF AN APPROVED TRAFFIC CONTROL PLAN. ALTERNATE ACCESS ROUTES SHALL BE CLEARLY SIGNED.
12. INSTALL SAFETY FENCING AROUND ALL OPEN EXCAVATIONS AT NIGHT.

TRAFFIC
CONTROL/PHASING NOTES

NO.	DATE	REVISION	STATE	PROJECT DESIGNATION	YEAR	SHEET NO.	TOTAL SHEETS
1	1/7/2021	ADDENDUM # 2	ALASKA	0670001/Z625410000	2020	T101	T111

NOTES:

- ① BUSINESS/RESIDENTIAL ACCESS. TEMPORARY CONSTRUCTION EASEMENT INFORMATION WILL BE PROVIDED BY DOT&PF.
- ② GLOBAL FINANCE & INVESTMENT. SEE SPECIFICATION SECTION 643-3.14
- ③ DENTAL OFFICE. SEE SPECIFICATION SECTION 643-3.14
- ④ ALLEY ACCESS. SEE SPECIFICATION SECTION 643-3.14
- ⑤ SEE SPECIFICATION SECTION 652 FOR ADDITIONAL REQUIREMENTS



**TRAFFIC CONTROL PLAN 1
INTERIM WORK ELEMENT #1
3rd ST. ONE WAY TRAFFIC FROM OLD
STEESE TO HAMILTON AVE.**

- CLOSURES
- VEHICLE DETOURS

ADDENDUM NO. 1, ATTACHMENT NO. 2

NO.	DATE	REVISION	STATE	PROJECT DESIGNATION	YEAR	SHEET NO.	TOTAL SHEETS
1	12/30/2020	ADDENDUM # 1	ALASKA	0670001/Z625410000	2020	T102	T111

INTERIM WORK ELEMENT 2 NOTES:

1. REFERENCE STEESE EXPWY DETOUR PLANS.
2. MAINTAIN BOTH DIRECTIONS (EASTBOUND & WESTBOUND) OF TRAFFIC ON 3RD STREET BETWEEN THE OLD STEESE HIGHWAY AND HAMILTON AVENUE INTERSECTIONS.
3. REFERENCE 652 SPECIAL PROVISIONS FOR ADDITIONAL REQUIREMENTS.

SEE STEESE EXPWY
DETOUR PLANS

SEE STEESE EXPWY
DETOUR PLANS

**TRAFFIC CONTROL PLAN 2
INTERIM WORK ELEMENT #2
CLOSURE OF STEESE EXPWY - PAVING**


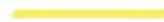
 CLOSURES
 VEHICLE DETOURS

Image © 2020 Maxar Technologies

700 ft



NO.	DATE	REVISION	STATE	PROJECT DESIGNATION	YEAR	SHEET NO.	TOTAL SHEETS
			ALASKA	0670001/Z625410000	2020	T103	T111

PLANS DEVELOPED BY: STATE OF ALASKA DEPARTMENT OF TRANSPORTATION & PUBLIC FACILITIES, NORTHERN REGION, 2301 PEGER ROAD, FAIRBANKS, AK 99709 (907)451-2200
 R:\Projects\Drafting Special Projects\Working Folder\HWY Z625410000\Traffic\Detour_Plan-T103 Tue, Oct/06/20 02:38pm



SEE SHEET T106

LEGEND:

- PROJECT CONSTRUCTION LIMITS
- SIGN LOCATION
- SIGN DESCRIPTION (SEE DESCRIPTION KEY, SHEET T106)



SCALE: NONE

STEESE EXPWY DETOUR
 1 OF 3

PLANS DEVELOPED BY: STATE OF ALASKA DEPARTMENT OF TRANSPORTATION & PUBLIC FACILITIES, NORTHERN REGION, 2301 PEGER ROAD, FAIRBANKS, AK 99709 (907)451-2200
 R:\Projects\Drafting Special Projects\Working Folder\HWY\Z625410000\Traffic\Detour\Plan-T106 Tue, Oct/06/20 02:38pm

SEE SHEET T104

NO.	DATE	REVISION	STATE	PROJECT DESIGNATION	YEAR	SHEET NO.	TOTAL SHEETS
			ALASKA	0670001/Z625410000	2020	T104	T111



LEGEND:

- PROJECT CONSTRUCTION LIMITS
- SIGN LOCATION
- SIGN DESCRIPTION (SEE DESCRIPTION KEY, SHEET T106)



SCALE: NONE

STEESE EXPWY DETOUR
2 OF 3

PLANS DEVELOPED BY: STATE OF ALASKA DEPARTMENT OF TRANSPORTATION & PUBLIC FACILITIES, NORTHERN REGION, 2301 PEGER ROAD, FAIRBANKS, AK 99709 (907)451-2200
 R:\Projects\Drafting Special Projects\Working folders\HWY_Z625410000\Traffic_DETOUT_Plan-T1107 Tue, Oct/06/20 02:38pm

NO.	DATE	REVISION	STATE	PROJECT DESIGNATION	YEAR	SHEET NO.	TOTAL SHEETS
			ALASKA	0670001/Z625410000	2020	T105	T111

DESCRIPTION KEY

SIGN KEY	SIGN GRAPHIC	SIGN DESIGNATION	SIGN SIZE	COMMENT
1		SPECIAL		8B LETTERS
2		M4-9	48"X36"	
3		M4-9R	48"X36"	
4		M4-9L	48"X36"	
5		SPECIAL		8B LETTERS
6		M4-8A	48"X36"	
7		SPECIAL		8B LETTERS
8		SPECIAL		8B LETTERS
9		R11-4 SPECIAL	60"X36"	8B LETTERS
10		SPECIAL		8B LETTERS

DESCRIPTION KEY

SIGN KEY	SIGN GRAPHIC	SIGN DESIGNATION	SIGN SIZE	COMMENT
11		SPECIAL		8B LETTERS
12		SPECIAL		8B LETTERS
13		SPECIAL		8B LETTERS
14	 USED WITH OR 	CW20-3 CW1-6L CW1-6R	48"X48" 24"X8" 24"X8"	
15		R11-2	48"X30"	
16		SPECIAL		8B LETTERS LOCATE SIGN IN MEDIAN ISLAND
17		SPECIAL		8B LETTERS LOCATE SIGN IN MEDIAN ISLAND

SCALE: NONE