

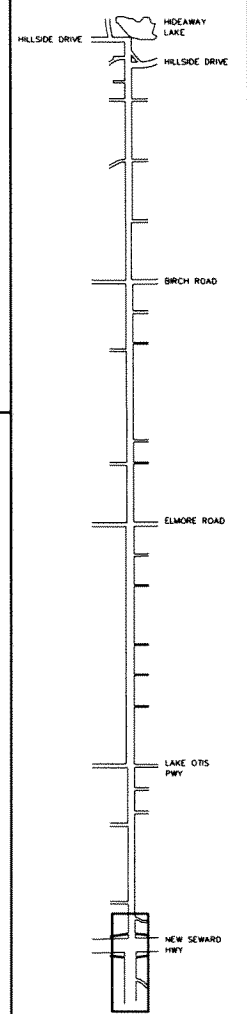
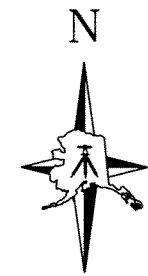
FIGURE 8

STATE	YEAR
ALASKA	2002
PROJECT DESIGNATION	
STP-0512(5)/53935	
ADDENDUM NO.	

ATTACHMENT NO.

REVISIONS

NO.	DATE	DESCRIPTION

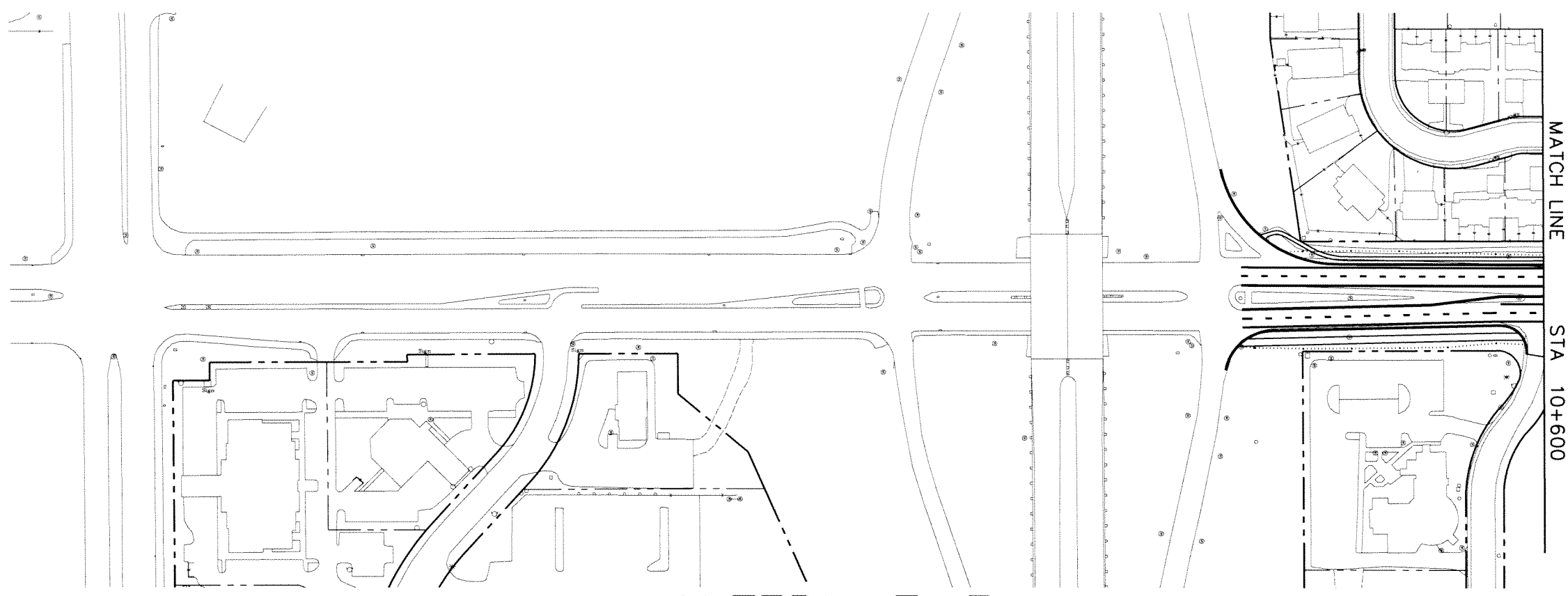


O'MALLEY ROAD  
NEW SEWARD HIGHWAY TO HILLSIDE DRIVE

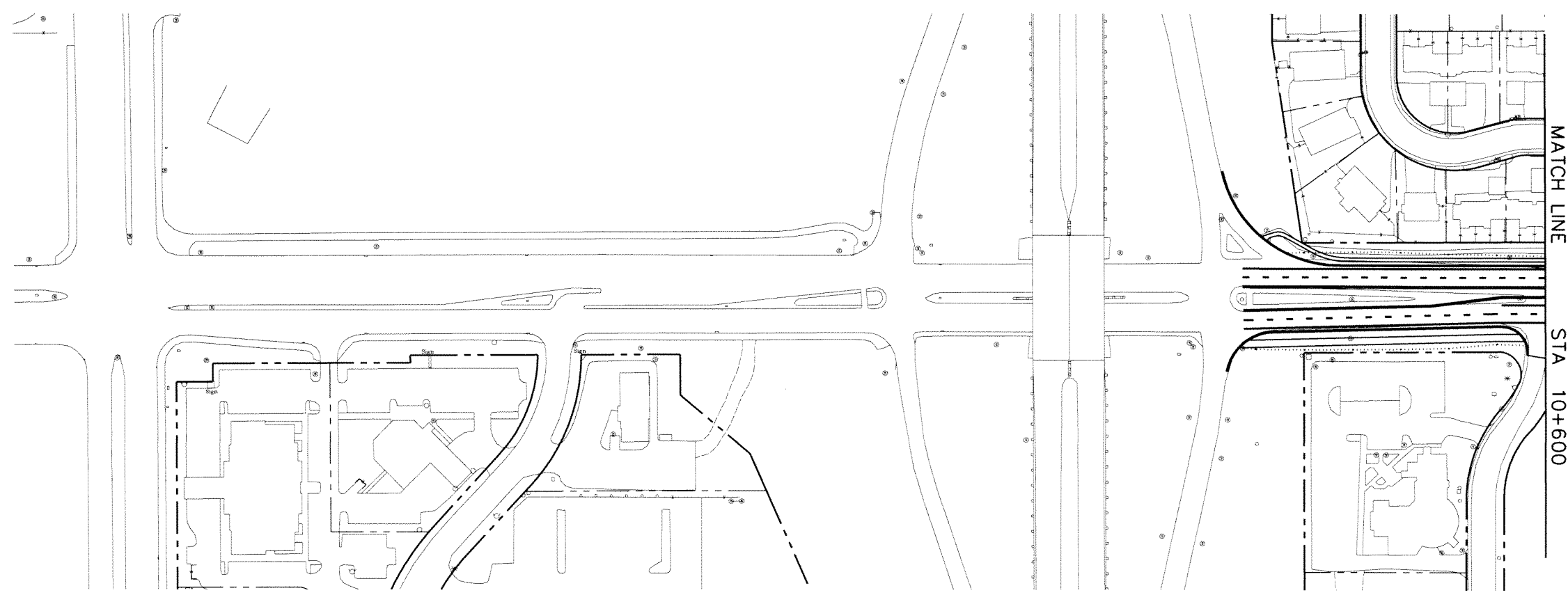
STATE OF ALASKA  
DEPARTMENT OF TRANSPORTATION  
AND  
PUBLIC FACILITIES

ALTERNATIVE ROW  
PLAN SHEET

STA 10+000 TO STA 10+600



ALTERNATIVE 1



ALTERNATIVE 2

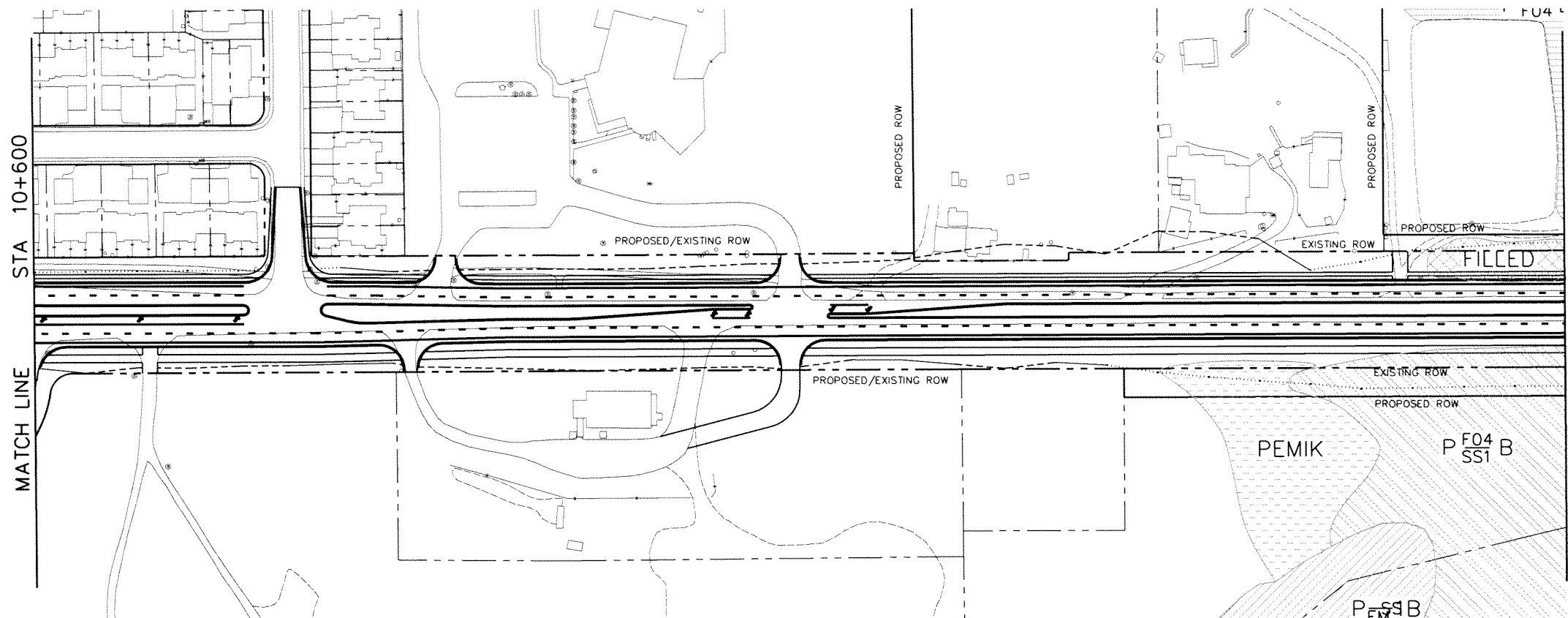
FIGURE 9

STATE	YEAR
ALASKA	2002
PROJECT DESIGNATION	
STP-0512(5)/53935	
ADDENDUM NO.	

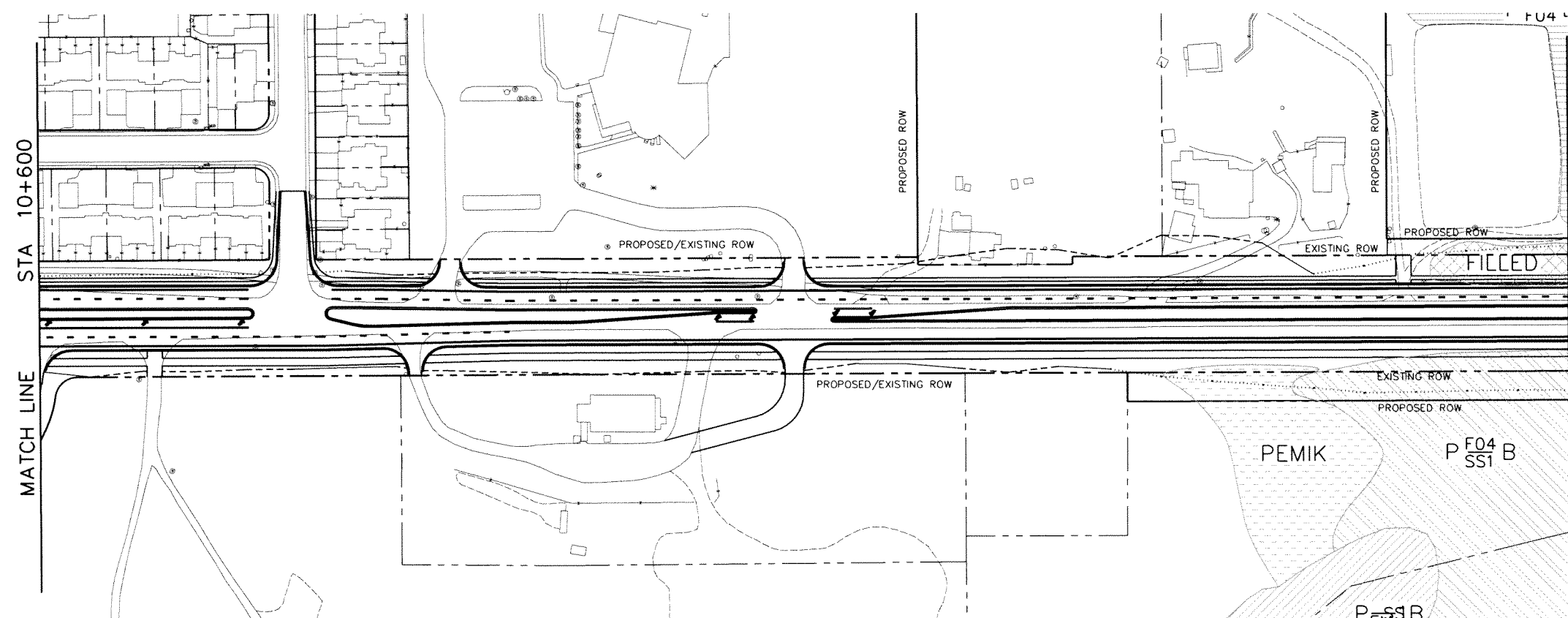
ATTACHMENT NO.

REVISIONS

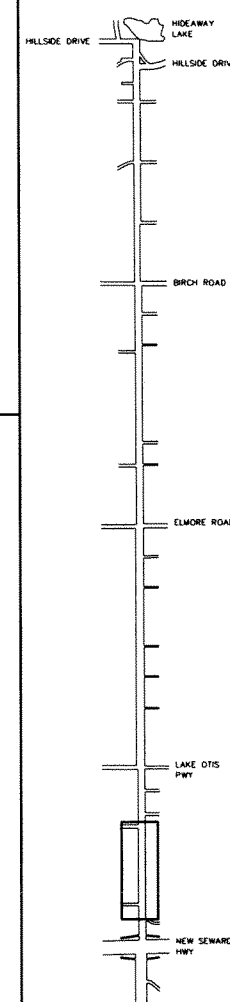
NO.	DATE	DESCRIPTION



ALTERNATIVE 1



ALTERNATIVE 2



O'MALLEY ROAD  
NEW SEWARD HIGHWAY TO HILLSIDE DRIVE

STATE OF ALASKA  
DEPARTMENT OF TRANSPORTATION  
AND  
PUBLIC FACILITIES

ALTERNATIVE ROW  
PLAN SHEET

STA 10+600 TO STA 11+200

FIGURE 10

STATE	YEAR
ALASKA	2002

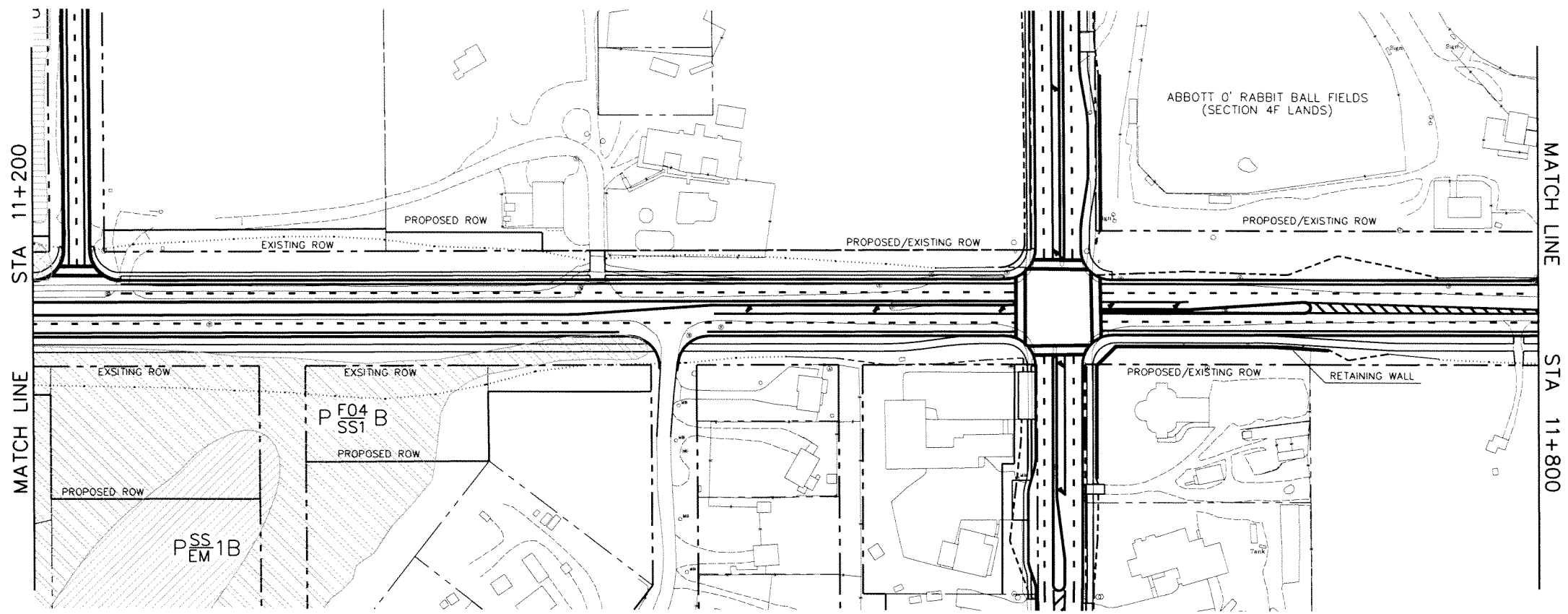
PROJECT DESIGNATION  
STP-0512(5)/53935

ADDENDUM NO.

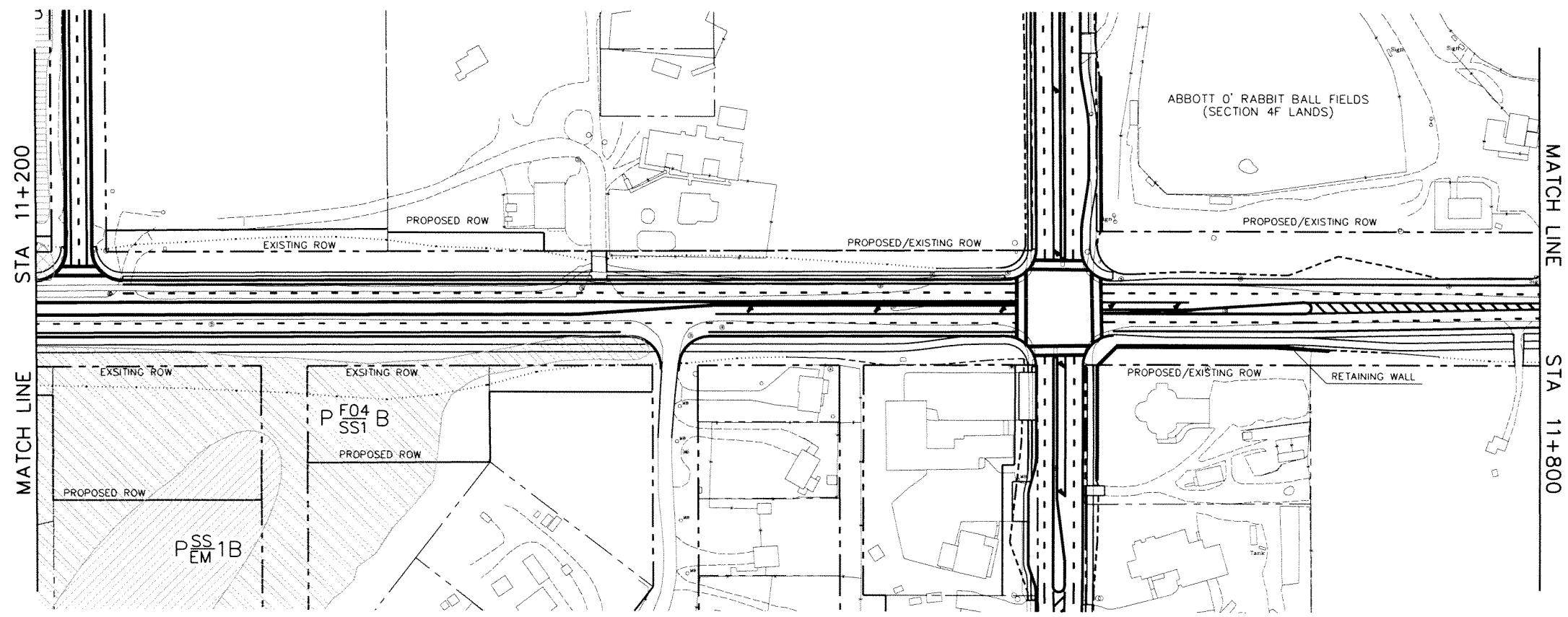
ATTACHMENT NO.

REVISIONS

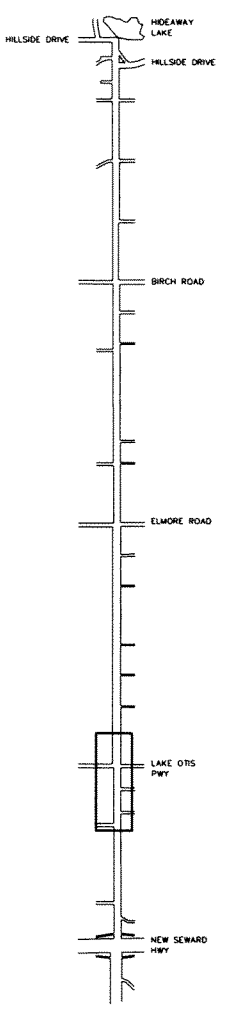
NO.	DATE	DESCRIPTION



ALTERNATIVE 1



ALTERNATIVE 2



O'MALLEY ROAD  
NEW SEWARD HIGHWAY TO HILLSIDE DRIVE

STATE OF ALASKA  
DEPARTMENT OF TRANSPORTATION  
AND  
PUBLIC FACILITIES

ALTERNATIVE ROW  
PLAN SHEET

STA 11+200 TO STA 11+800

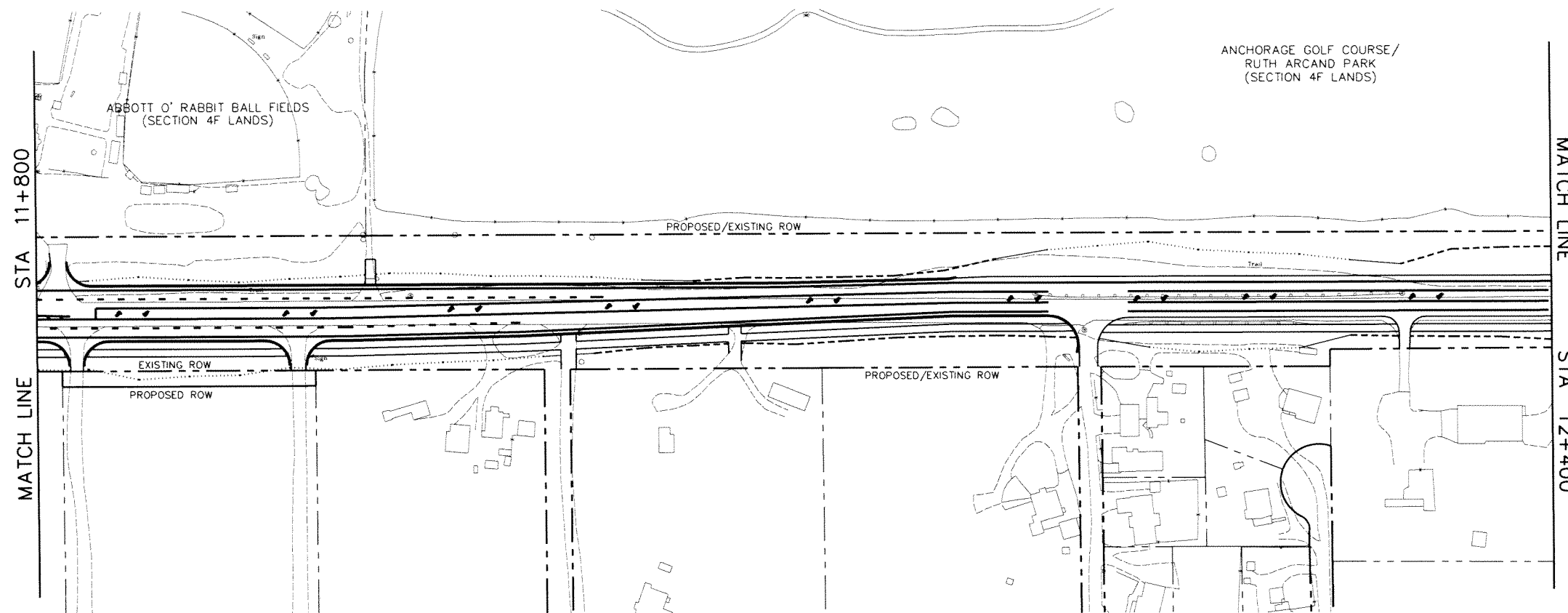
FIGURE 11

STATE	YEAR
ALASKA	2002
PROJECT DESIGNATION	
STP-0512(5)/53935	
ADDENDUM NO.	

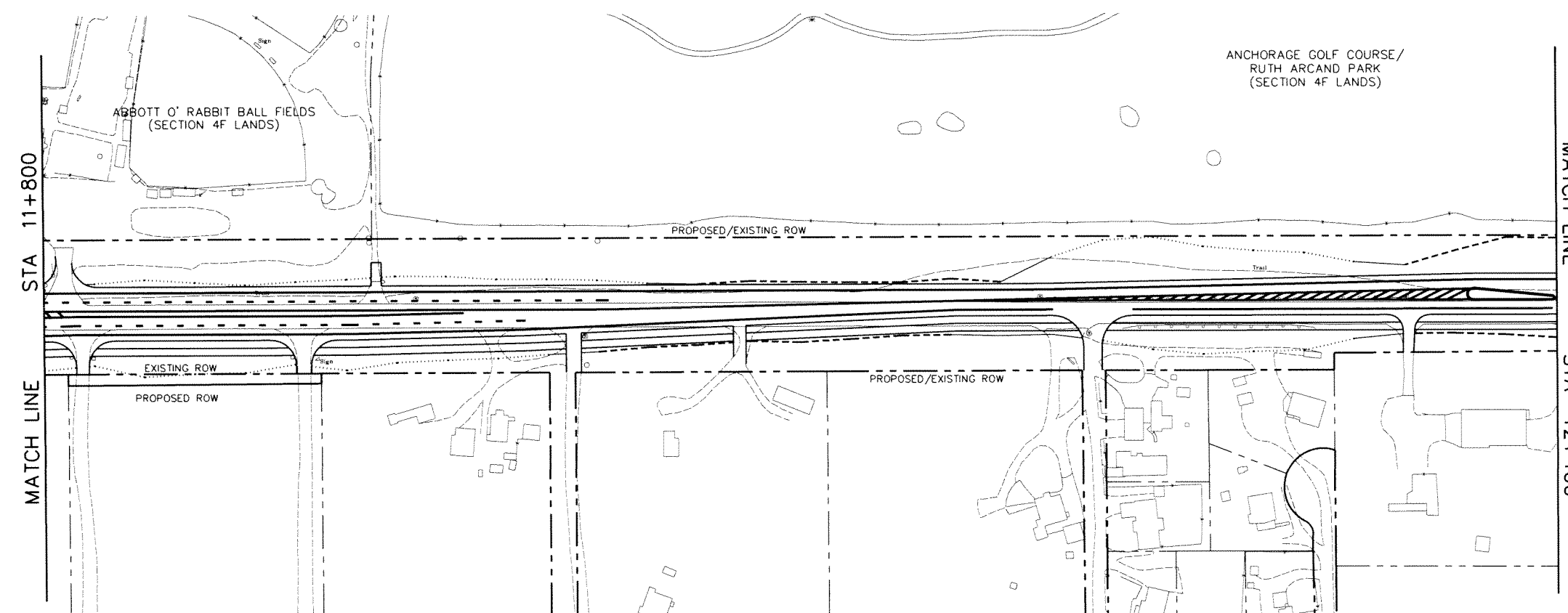
ATTACHMENT NO.

REVISIONS

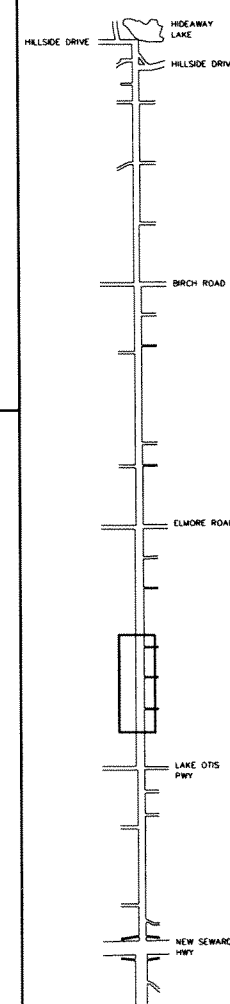
NO.	DATE	DESCRIPTION



ALTERNATIVE 1



ALTERNATIVE 2



O'MALLEY ROAD  
NEW SEWARD HIGHWAY TO HILLSIDE DRIVE

STATE OF ALASKA  
DEPARTMENT OF TRANSPORTATION  
AND  
PUBLIC FACILITIES

ALTERNATIVE ROW  
PLAN SHEET

STA 11+800 TO STA 12+400

FIGURE 12

STATE	YEAR
ALASKA	2002

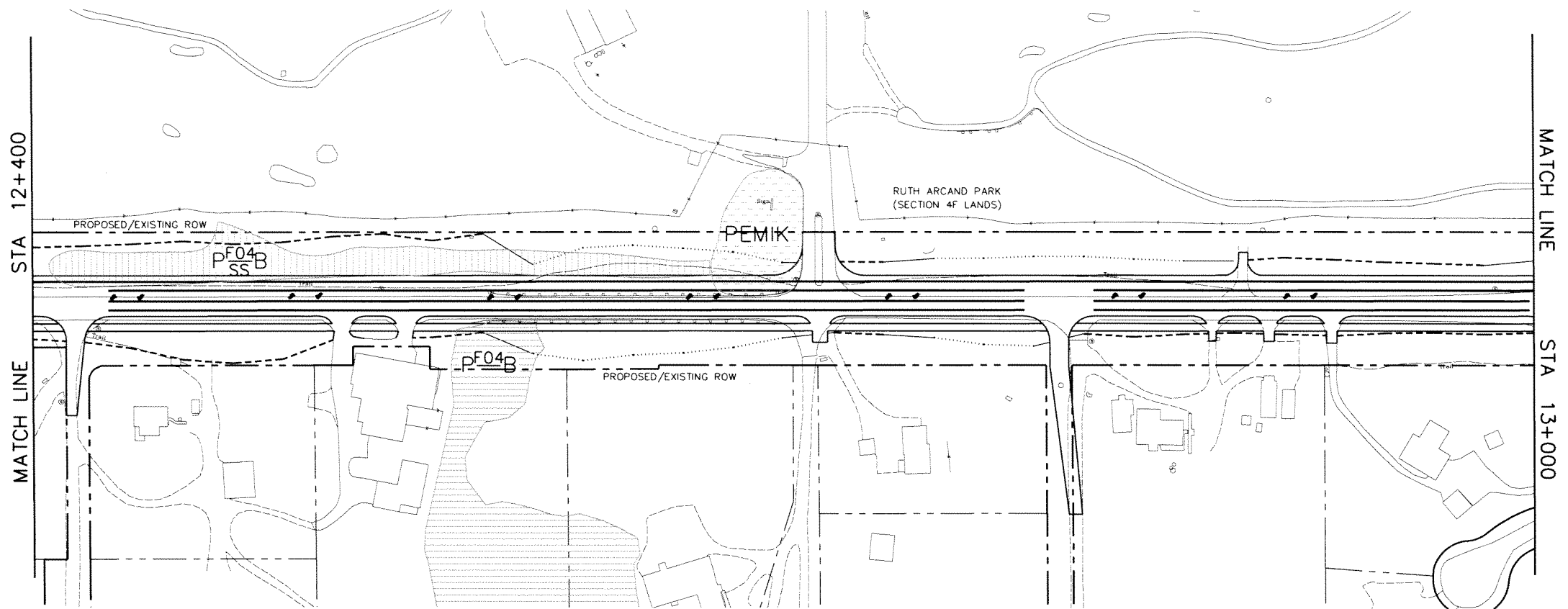
PROJECT DESIGNATION  
STP-0512(5)/53935

ADDENDUM NO.

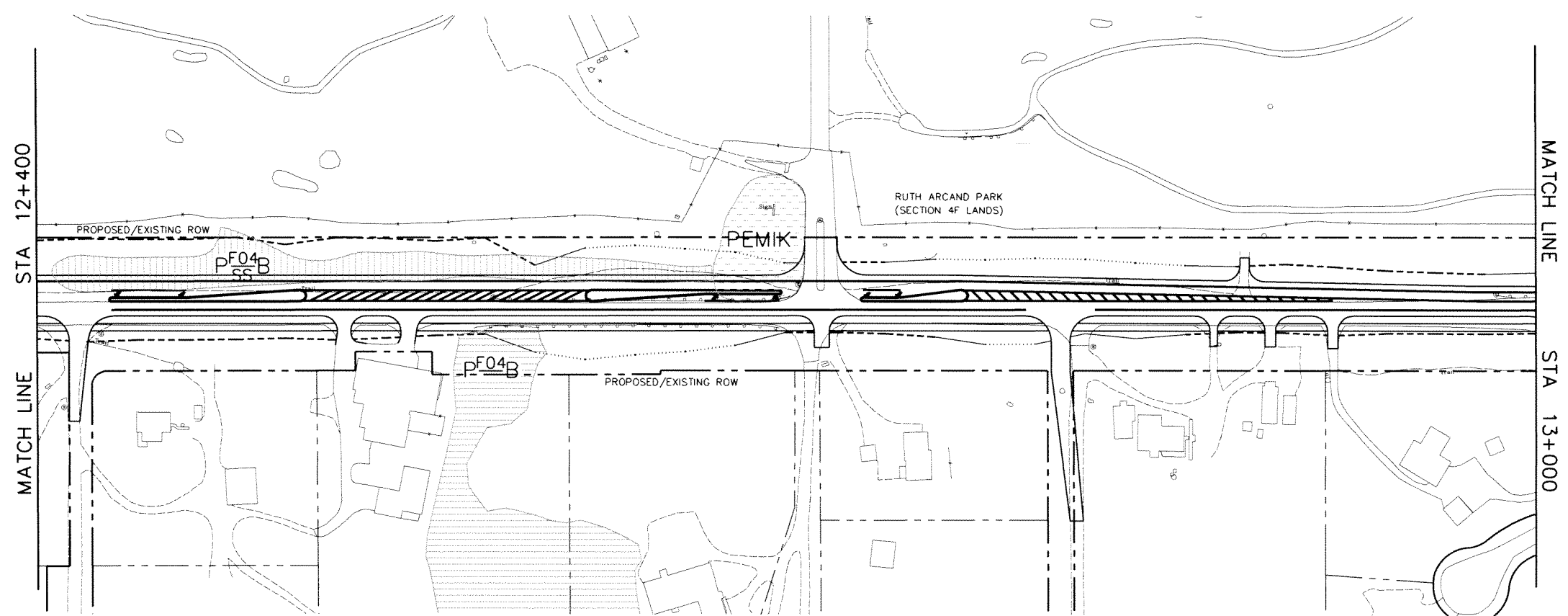
ATTACHMENT NO.

REVISIONS

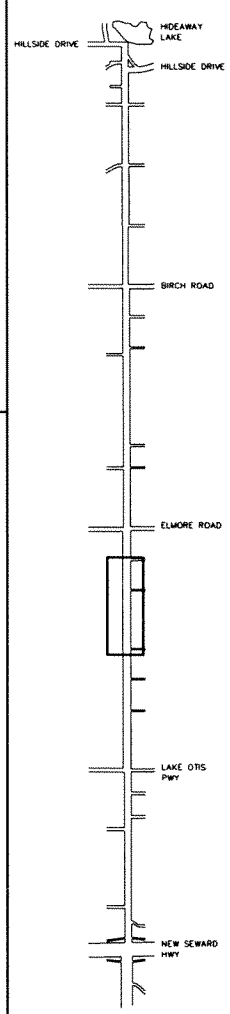
NO.	DATE	DESCRIPTION



ALTERNATIVE 1



ALTERNATIVE 2



O'MALLEY ROAD  
NEW SEWARD HIGHWAY TO HILLSIDE DRIVE

STATE OF ALASKA  
DEPARTMENT OF TRANSPORTATION  
AND  
PUBLIC FACILITIES

ALTERNATIVE ROW  
PLAN SHEET

STA 12+400 TO STA 13+600

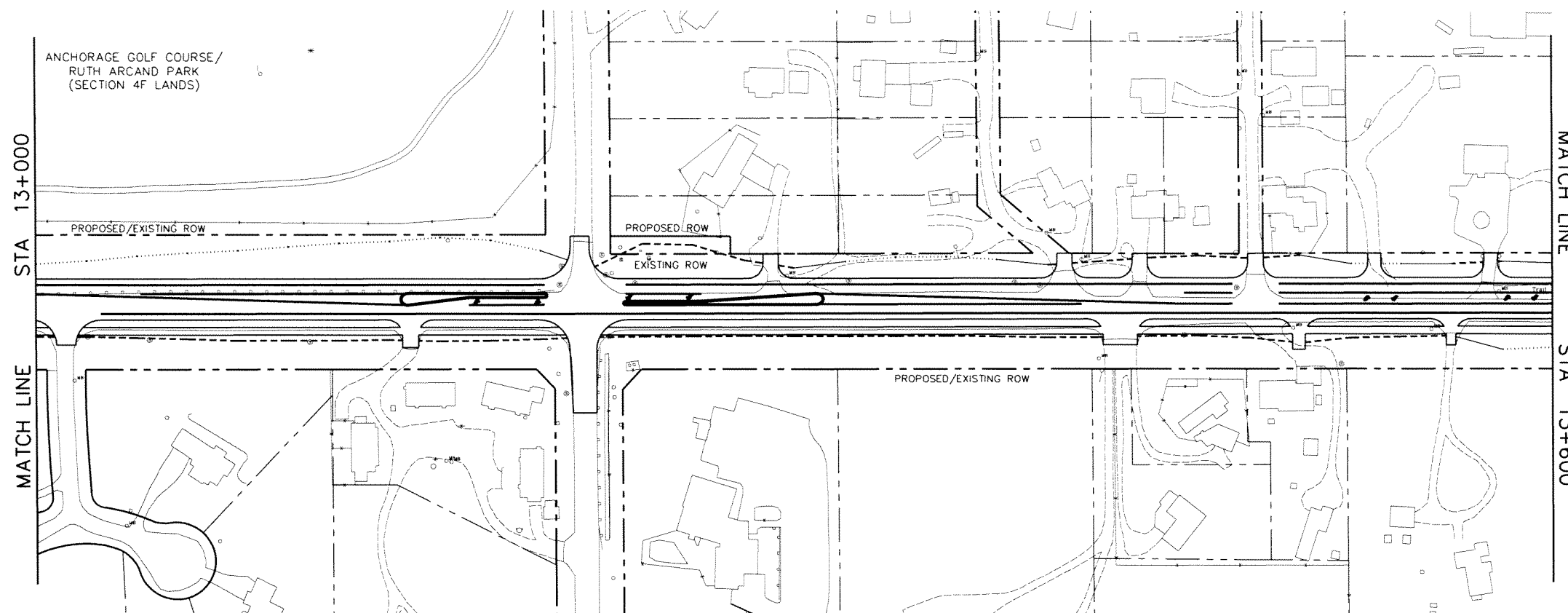
FIGURE 13

STATE	YEAR
ALASKA	2002
PROJECT DESIGNATION	
STP-0512(5)/53935	
ADDENDUM NO.	

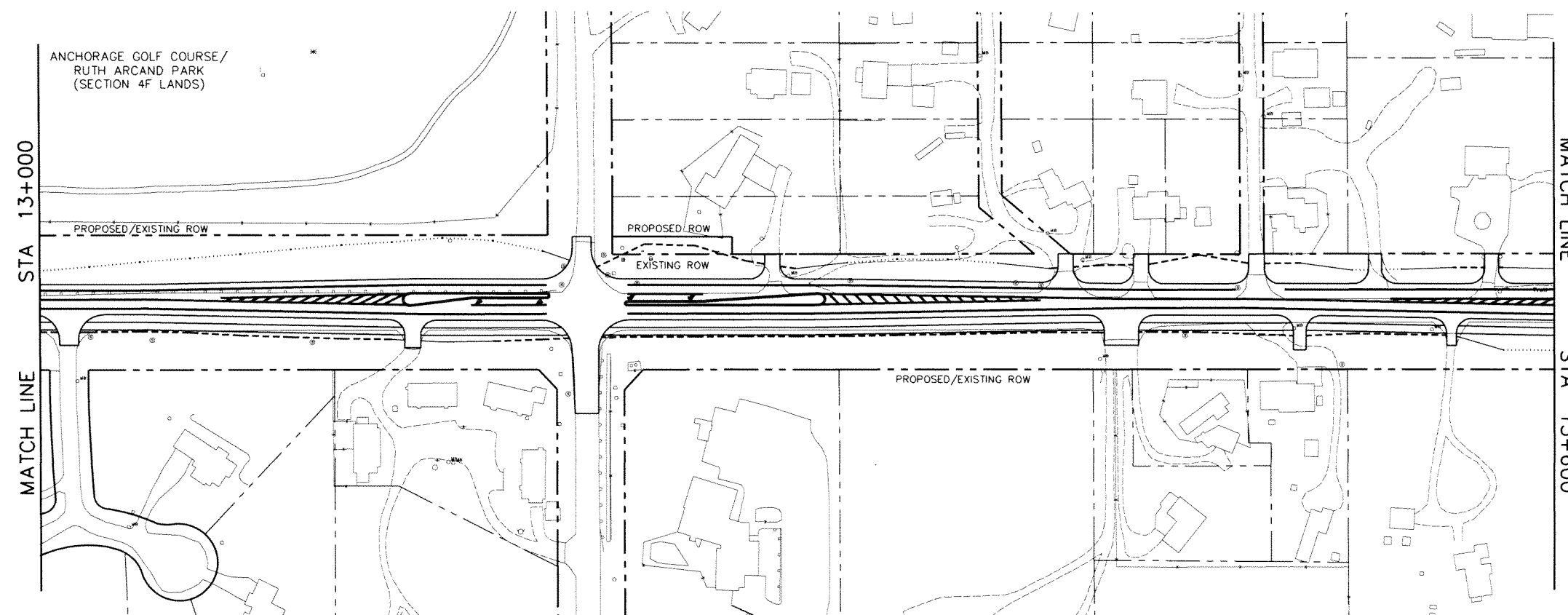
ATTACHMENT NO.

REVISIONS

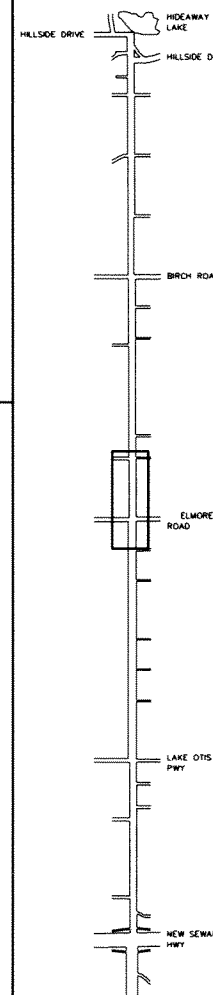
NO.	DATE	DESCRIPTION



ALTERNATIVE 1



ALTERNATIVE 2



O'MALLEY ROAD  
NEW SEWARD HIGHWAY TO HILLSIDE DRIVE

STATE OF ALASKA  
DEPARTMENT OF TRANSPORTATION  
AND  
PUBLIC FACILITIES

ALTERNATIVE ROW  
PLAN SHEET

STA 13+000 TO STA 13+600

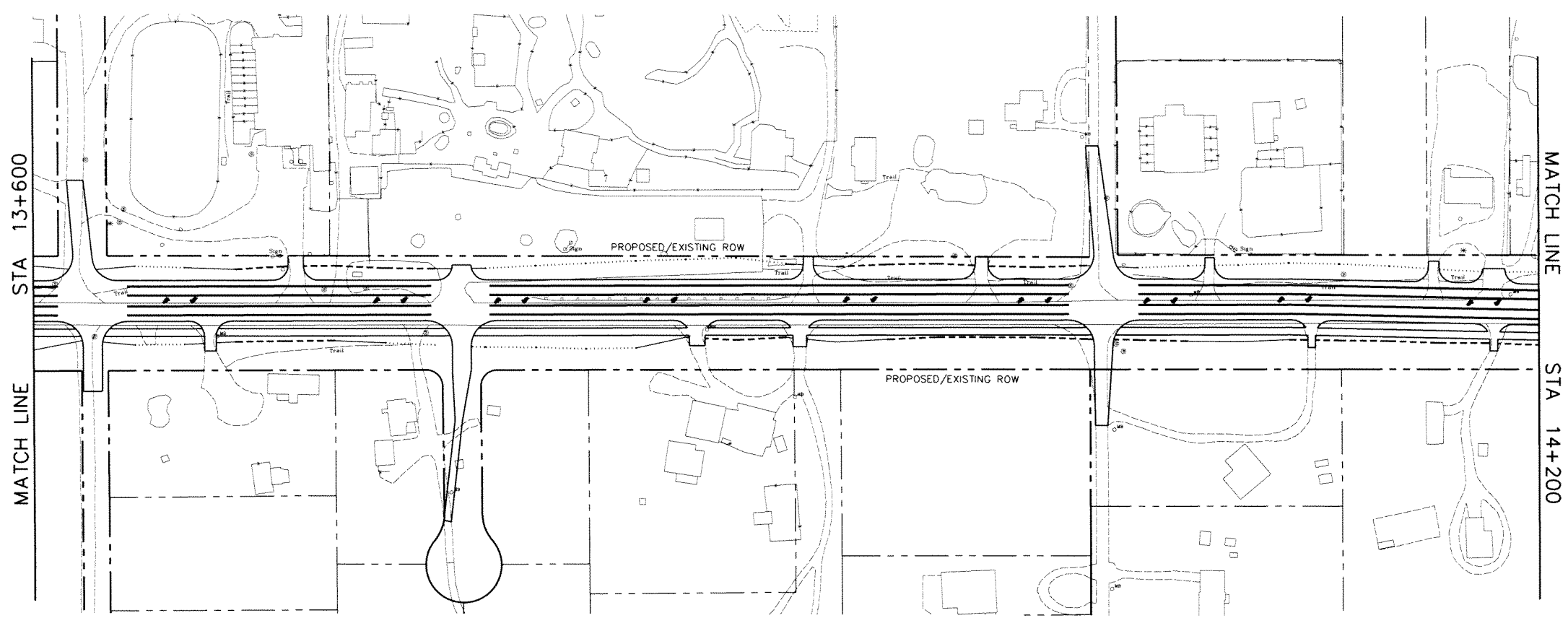
FIGURE 14

STATE	YEAR
ALASKA	2002
PROJECT DESIGNATION	
STP-0512(5)/53935	
ADDENDUM NO.	

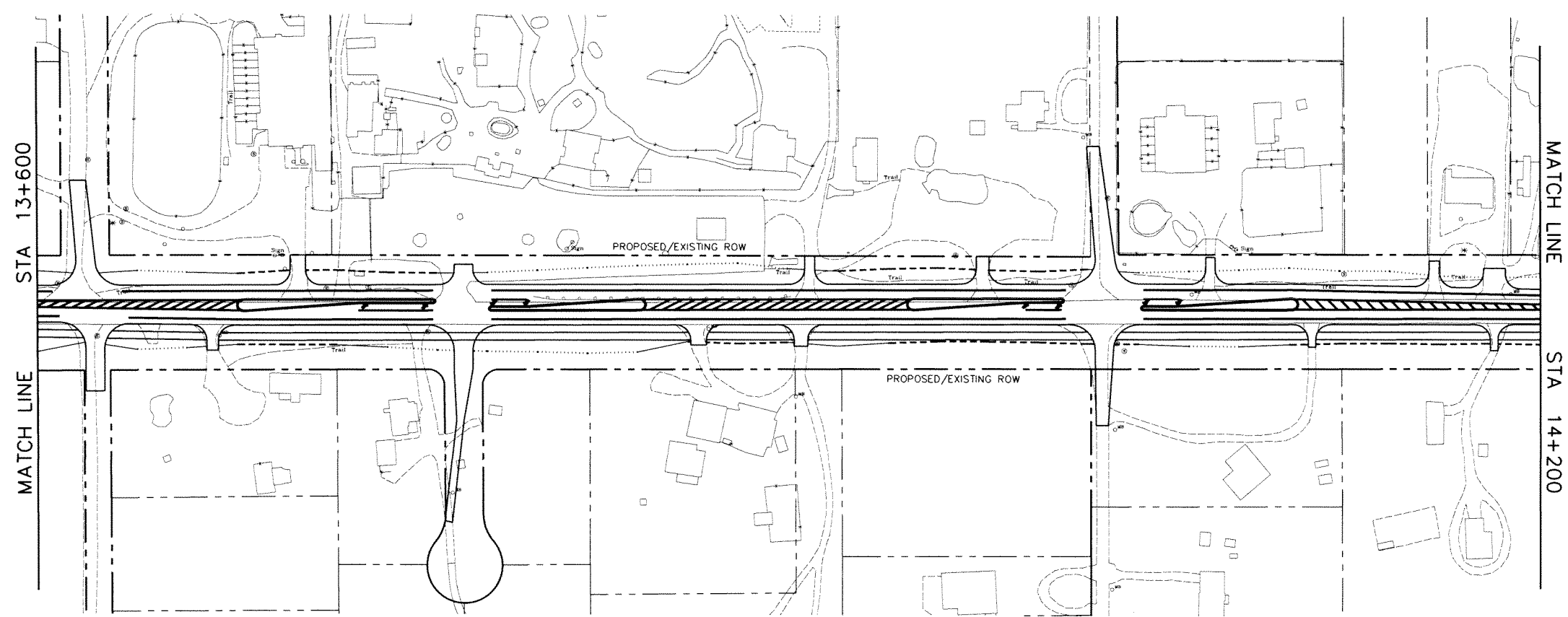
ATTACHMENT NO.

REVISIONS

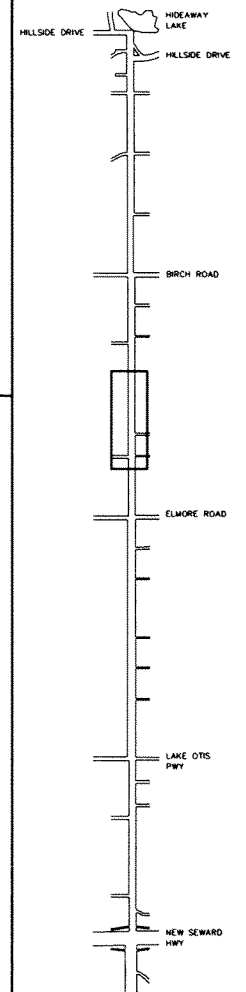
NO.	DATE	DESCRIPTION



ALTERNATIVE 1



ALTERNATIVE 2



O'MALLEY ROAD  
NEW SEWARD HIGHWAY TO HILLSIDE DRIVE

STATE OF ALASKA  
DEPARTMENT OF TRANSPORTATION  
AND  
PUBLIC FACILITIES

ALTERNATIVE ROW  
PLAN SHEET

STA 13+600 TO STA 14+200

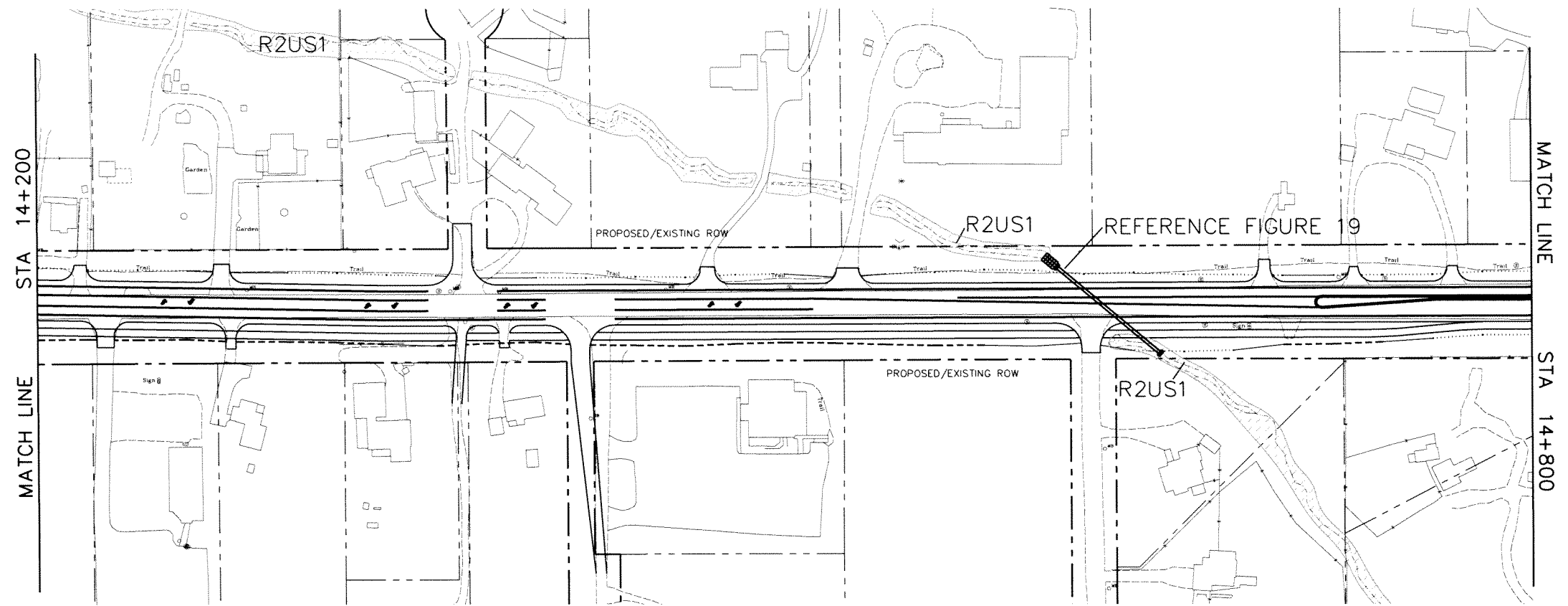
FIGURE 15

STATE	YEAR
ALASKA	2002

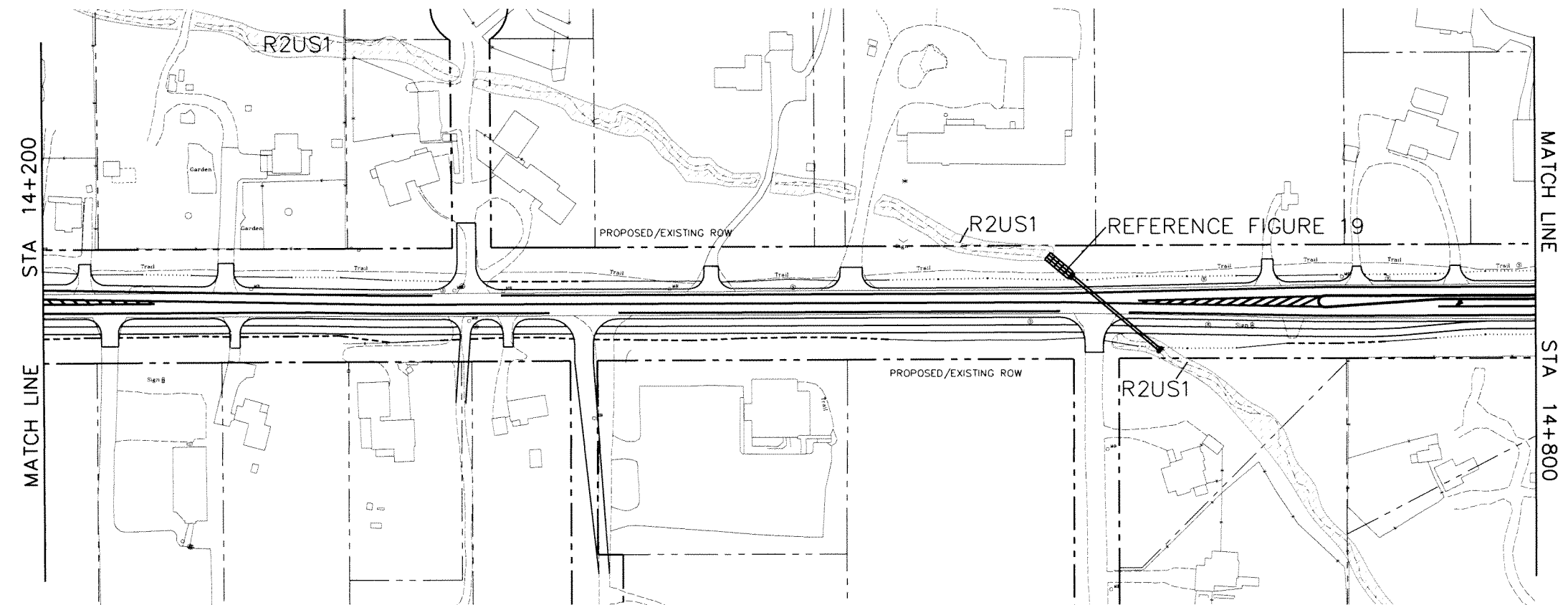
PROJECT DESIGNATION  
STP-0512(5)/53935

ADDENDUM NO.  
  
ATTACHMENT NO.

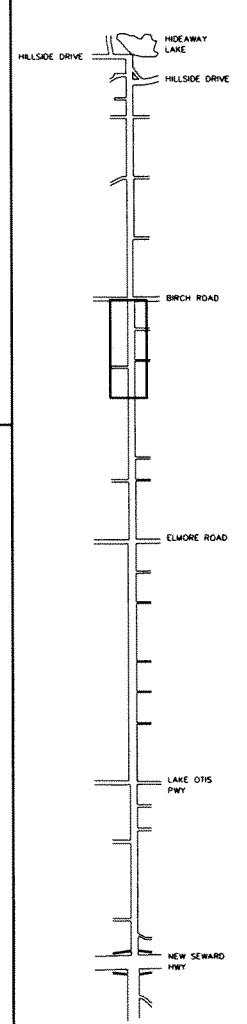
REVISIONS		
NO.	DATE	DESCRIPTION



ALTERNATIVE 1



ALTERNATIVE 2



O'MALLEY ROAD  
NEW SEWARD HIGHWAY TO HILLSIDE DRIVE

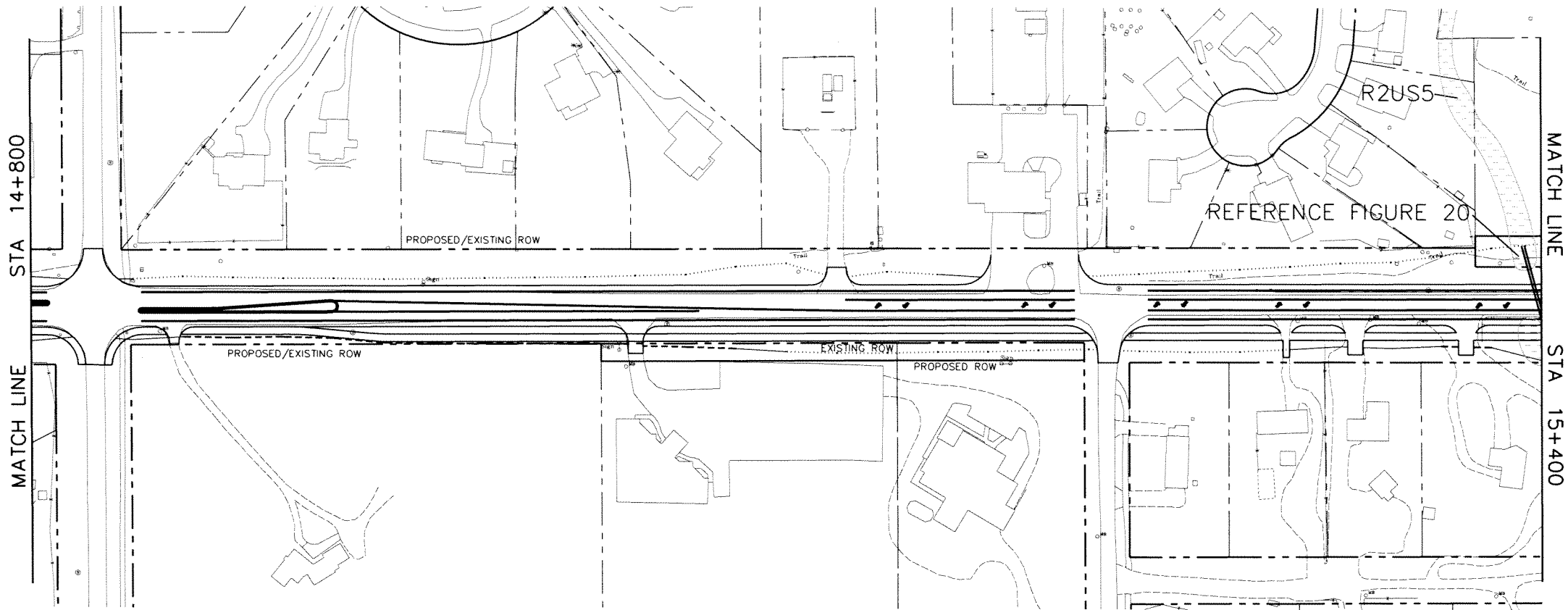


FIGURE 16

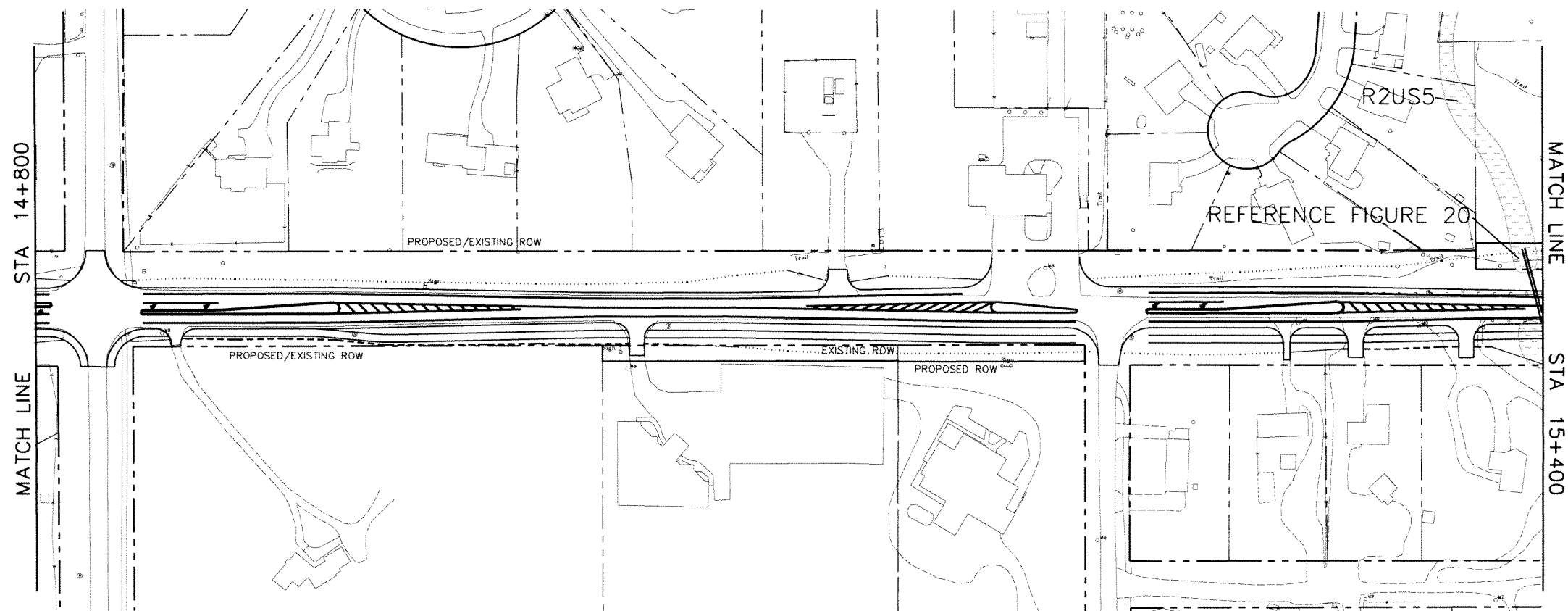
STATE	YEAR
ALASKA	2002
PROJECT DESIGNATION	
STP-0512(5)/53935	
ADDENDUM NO.	

ATTACHMENT NO.

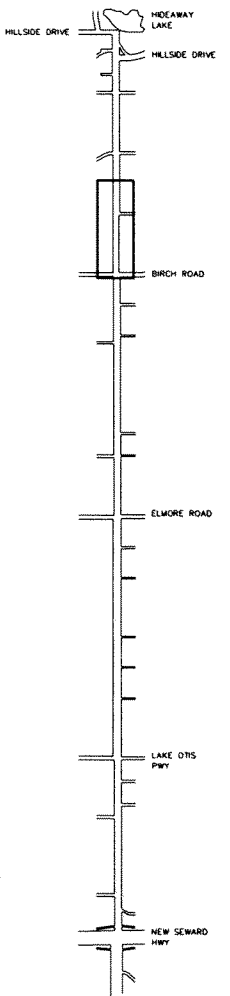
REVISIONS		
NO.	DATE	DESCRIPTION



ALTERNATIVE 1



ALTERNATIVE 2



O'MALLEY ROAD  
NEW SEWARD HIGHWAY TO HILLSIDE DRIVE

STATE OF ALASKA  
DEPARTMENT OF TRANSPORTATION  
AND  
PUBLIC FACILITIES

ALTERNATIVE ROW  
PLAN SHEET

STA14+800 TO STA 15+400

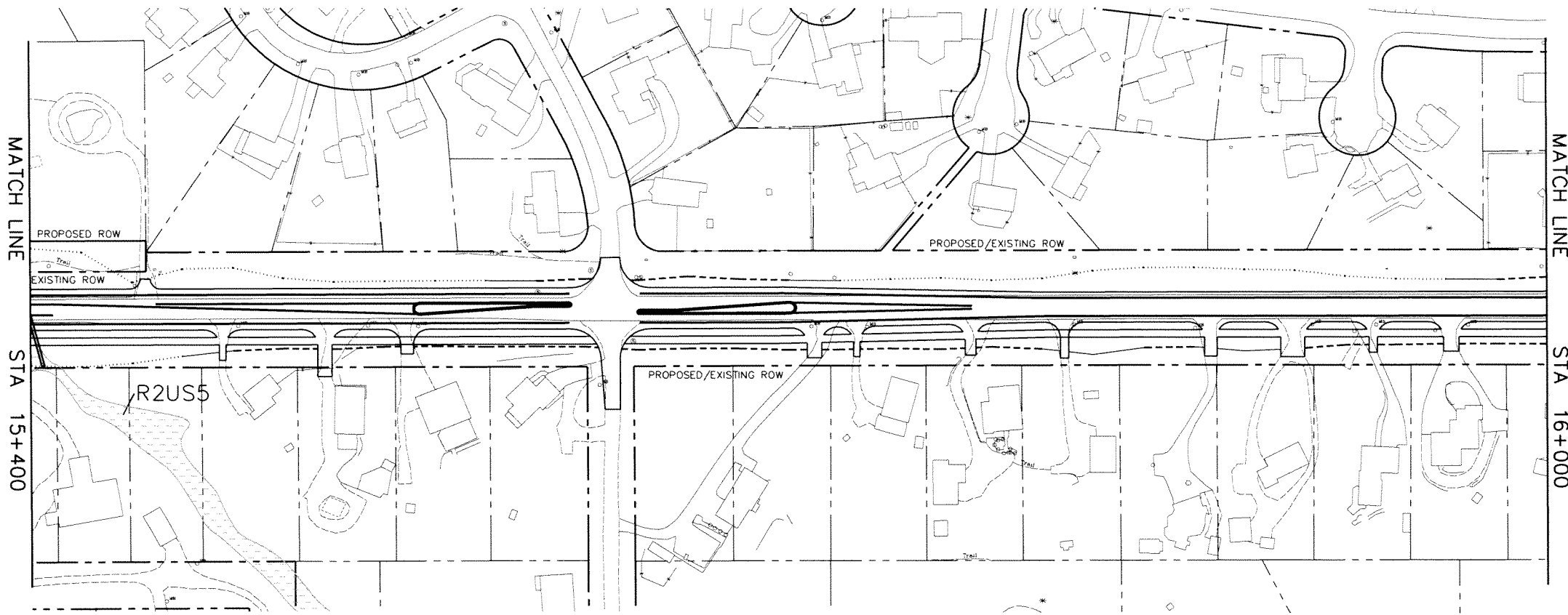
FIGURE 17

STATE	YEAR
ALASKA	2002
PROJECT DESIGNATION	
STP-0512(5)/53935	
ADDENDUM NO.	

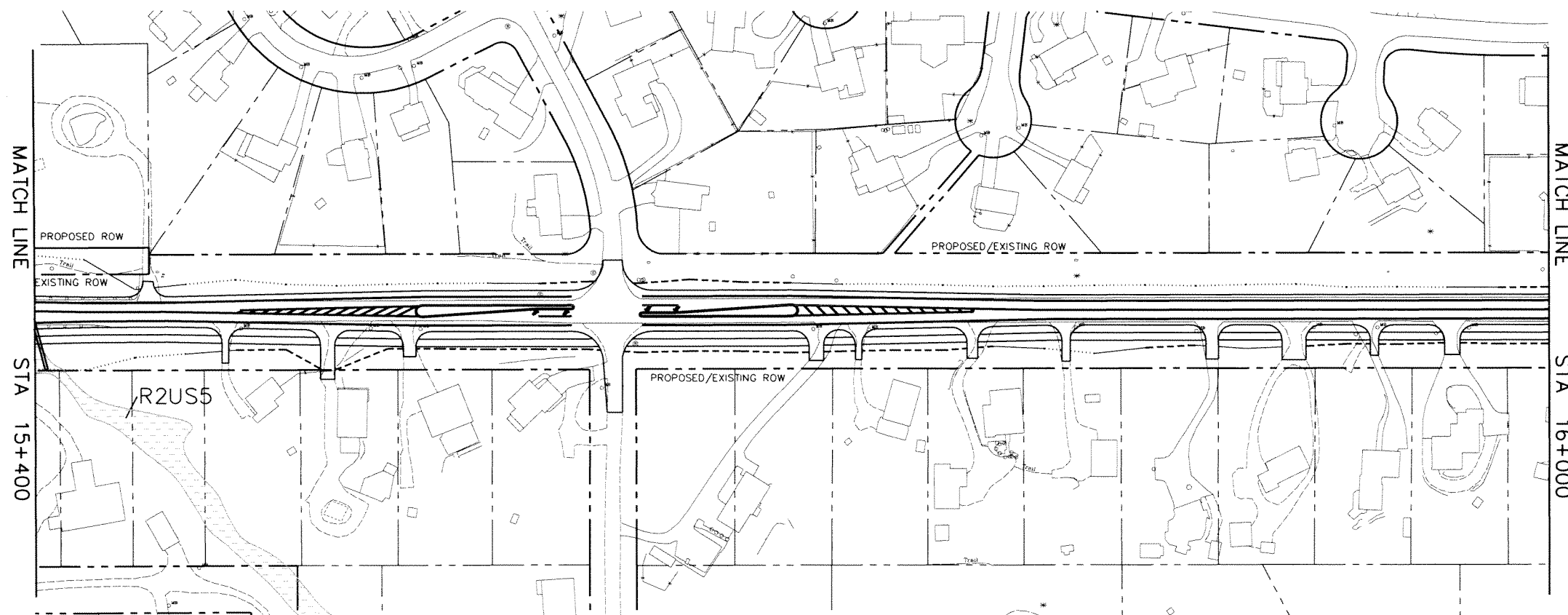
ATTACHMENT NO.

REVISIONS

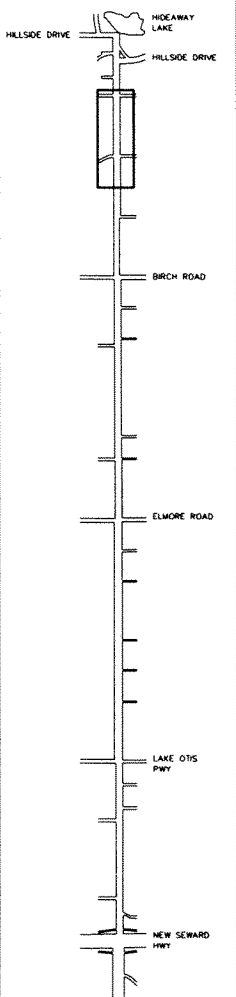
NO.	DATE	DESCRIPTION



ALTERNATIVE 1



ALTERNATIVE 2



O'MALLEY ROAD  
NEW SEWARD HIGHWAY TO HILLSIDE DRIVE

STATE OF ALASKA  
DEPARTMENT OF TRANSPORTATION  
AND  
PUBLIC FACILITIES

ALTERNATIVE ROW  
PLAN SHEET

STA 15+400 TO STA 16+000

FIGURE 18

STATE	YEAR
ALASKA	2002

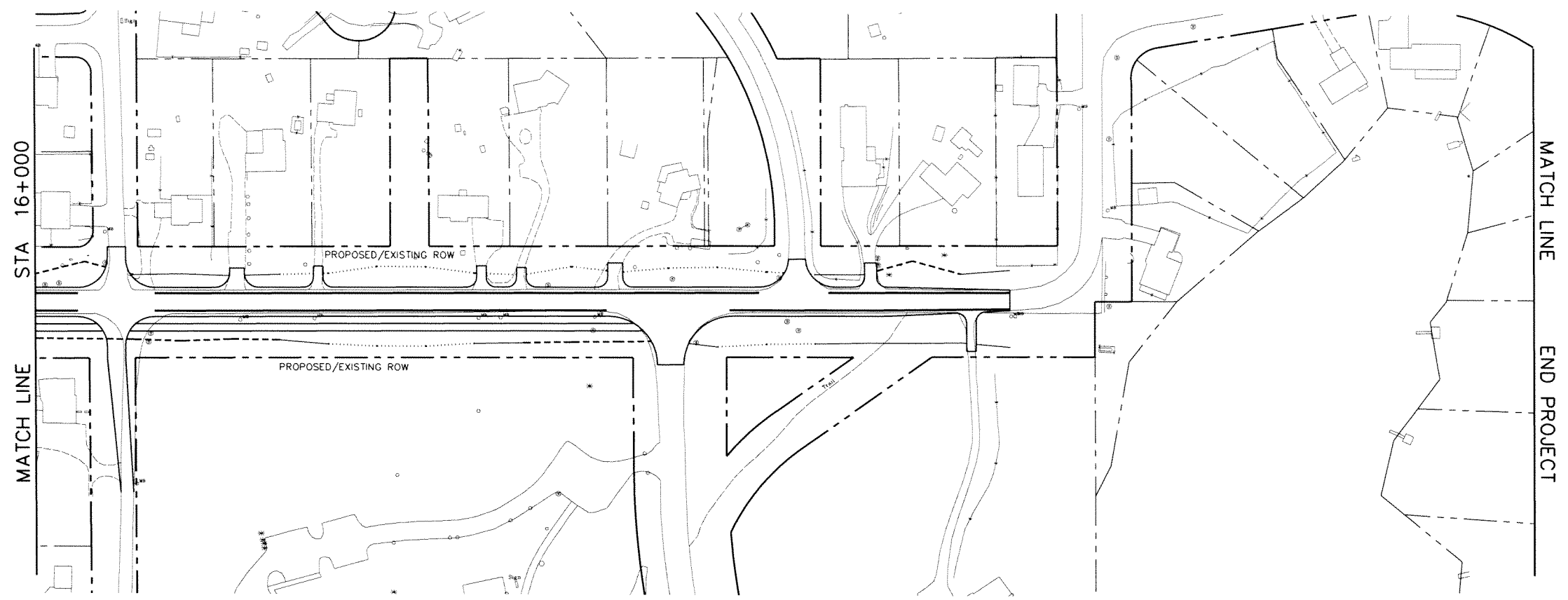
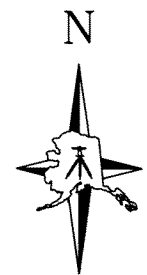
PROJECT DESIGNATION  
STP-0512(5)/53935

ADDENDUM NO.

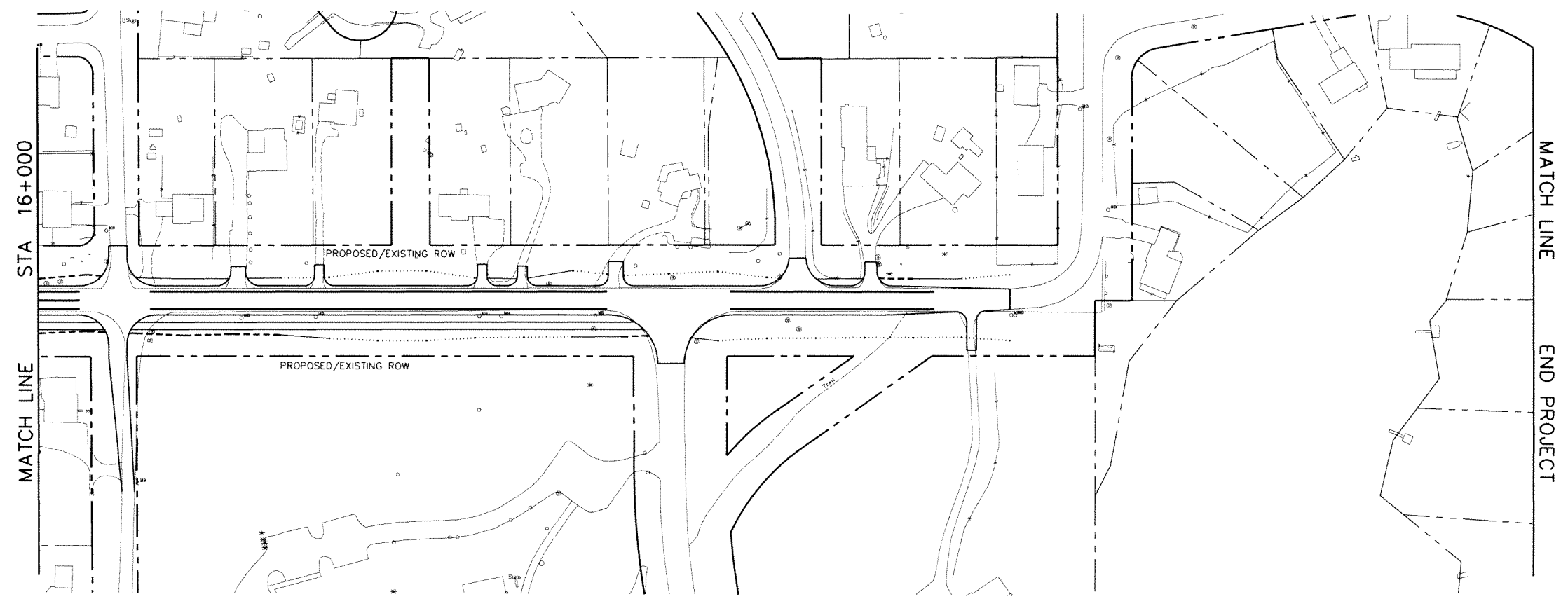
ATTACHMENT NO.

REVISIONS

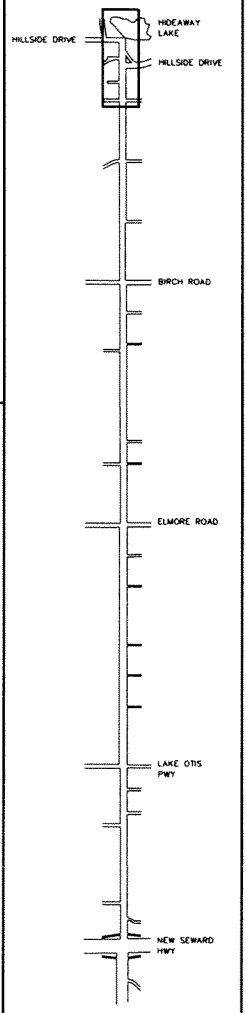
NO.	DATE	DESCRIPTION



ALTERNATIVE 1



ALTERNATIVE 2



O'MALLEY ROAD  
NEW SEWARD HIGHWAY TO HILLSIDE DRIVE

STATE OF ALASKA  
DEPARTMENT OF TRANSPORTATION  
AND  
PUBLIC FACILITIES

ALTERNATIVE ROW  
PLAN SHEET

STA 16+000 TO EOP