



# Director's Quarterly

Alaska Department of Transportation and Public Facilities  
Summer Edition - Greater Southwest Area

June 2014

## DIRECTOR'S MESSAGE



**Rob Campbell, P.E.**

Central Region Director, is a lifelong Alaskan. He has a Bachelor's degree in Civil Engineering from Oregon State University, and a Master's degree in Engineering Management from the University of Alaska, Anchorage. He has worked at DOT&PF for more than 30 years.

For comments or questions about the newsletter:

[DOT.CR.Director@alaska.gov](mailto:DOT.CR.Director@alaska.gov)

In this issue, we primarily focus on construction projects for our 2014 busy summer season, but I have included information on two other subjects as well: street sweeping and traffic counting. Nothing heralds the arrival of spring more than the sight of street sweepers in our urban areas. Beginning with the highways, the sweepers make their way to the less traveled roads and then on to the bike trails. While the sweepers are slightly bothersome to traffic, pulling up the winter sand helps both air & water quality. Then, secondly, our summer brings us the opportunity to collect yearly traffic data that aids our planning, design, and safety efforts. We have a small article below about our seasonal traffic counts program, another facet of our "intelligent highways" system.

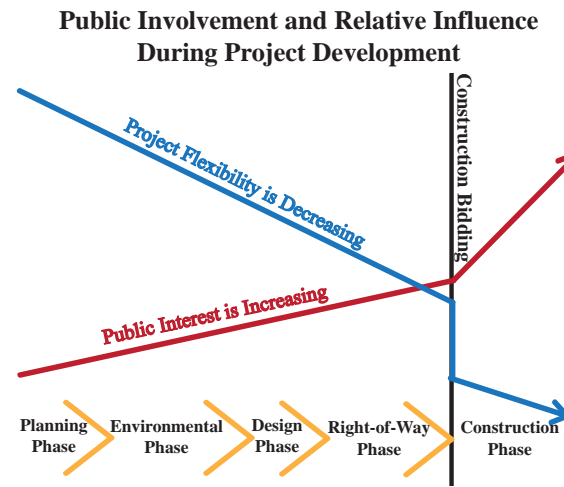
The main topic of summer, of course, is always construction activity. Many people have varying opinions about road construction, and often those opinions don't come out until the project is being built. While we always listen to comments, the volume and divergence of opinions make it impossible to satisfy everyone, and our construction documents reflect the culmination of years of efforts. After the inconvenience of construction is over, however, most comments on the final product are positive – which is always a good feeling.

I look forward to a busy, productive summer, and as always, if you are in the area, stop by, and we can look at projects together.

## DOT&PF CONSTRUCTION MANAGEMENT

The 2014 construction season is gearing up to be very busy for Central Region. A record amount of funding approved for transportation projects in fiscal year 2013 includes over \$200 million for road and highway construction in Central Region, most of which is underway this season. Additionally, approximately \$160 million in fiscal year 2014 road projects and approximately \$150 million for airport projects will be under construction this season.

The Department's on-site Project Engineers are working in close coordination with the project contractors' staffs to ensure that issues pertaining to dust, noise and traffic delays are handled in a timely and responsive manner. How the contractors and the Department's Project Engineers address these concerns is very project specific. In busy urban areas such as Anchorage, some of the repaving projects are scheduled for night-time construction, allowing the contractor to more efficiently mobilize equipment and construction materials while minimizing traffic impacts. Due to the nature of Alaska's road systems there are often no alternative highway routes. Hence, construction must occur while keeping the highway corridor open to the traveling public.



The construction phase of the project is also the time when the public takes a heightened interest in the specific details of a project; yet, the designs and plan sets have been finalized and contracts for work have been awarded. It is one of the dichotomies of any public works project: once construction starts, there is the most interest in project details, but the least flexibility in making changes to the design of the project. We strive to involve interested parties in the early stages of planning and project design when there is more opportunity for input and encourage all to stay abreast of project planning and design via the project website or links at the bottom of this page.



*Keeping traffic moving during construction of the West Dowling Road Extension project is more challenging due to the need to accommodate rail traffic. Also, note the extensive utilities that needed to be accommodated and addressed in the design.*

## CENTRAL REGION'S ANNUAL TRAFFIC VOLUME REPORT



*Highway data crews collecting traffic counts*

The Highway Data Section provides statistical information regarding the volume and character of traffic on the state highway system for use by engineers, planners, and other decision makers to aid them in their assessment of the State's transportation needs. The data they collect is compiled into the Annual Traffic Volume Report, including:

- Permanent Counts: Traffic volumes (by direction of travel) are collected year-round with Permanent Traffic Recorders (PTRs) at a number of permanent locations. These counts are expressed in yearly averages and are used to provide information concerning seasonal traffic.
- Coverage Counts: Also known as the Annual Average Daily Traffic (AADT), these traffic volumes (sometimes by direction of travel) are typically collected for seven consecutive days in varying locations. Due to weather conditions, these counts are only taken between May and September and those counts are adjusted for seasonal increases using the PTR data.

For more information about traffic counts or to read Central Region's Annual Traffic Volume Report visit <http://www.dot.state.ak.us/stwdp/plng/mapping/adt.shtml>.

## IMPORTANT LINKS

Where can I go to...

- Find information about road construction projects and road closures?
- Find information about road conditions?
- Locate the Central Region Public Involvement Calendar?
- Sign up for weekly updates on Parks Highway construction?
- Get more information about active Central Region projects?
- Find websites for Central Region Projects?

<http://alaskanavigator.org/>  
<http://511.alaska.gov/>  
<http://dot.alaska.gov/creg/calendar.shtml>  
<http://dot.alaska.gov/parks2014/>  
<http://dot.alaska.gov/projects-status/index.cfm>  
[http://dot.alaska.gov/creg/project\\_info/](http://dot.alaska.gov/creg/project_info/)



## ROAD AND HIGHWAY IMPROVEMENTS

### Aleknagik Wood River Bridge Groundbreaking - March 28, 2014

The City of Aleknagik hosted a groundbreaking ceremony in late March to celebrate the start of construction for Wood River Bridge. Attendees varied from high school children to DOT engineers to state legislators, with more than one hundred people making the trip to the south side of the shore for the presentations. The two year project will construct a two-lane bridge and an access road, connecting residents in Aleknagik to Dillingham by road. For more information, contact Construction Project Manager Matt Morrow at (907) 269-0466 or [matthew.morrow@alaska.gov](mailto:matthew.morrow@alaska.gov); or Project Engineer John Waisanen at (907) 842-1310 or [john.waisanen@alaska.gov](mailto:john.waisanen@alaska.gov). Information will also be available on the project website [www.brooks-alaska.com/aleknagik](http://www.brooks-alaska.com/aleknagik).



Wood River Bridge Groundbreaking Ceremony

### Alaska Peninsula Highway Pavement Preservation

Knik Construction mobilized to King Salmon in May for this pavement preservation project. Work includes paving the roadway and shoulders, new guardrail and end treatments, drainage, signs, and striping. For more information, contact Construction Project Manager Brian Shumacher at (907) 269-0450 or at [brian.schumacher@alaska.gov](mailto:brian.schumacher@alaska.gov).



False Pass Airport Access Road Bridge

### False Pass Access Road Resurfacing and Bridge Repair

This resurfacing project, by Twin Peaks Construction, extends the life of False Pass' airport access road while improving safety, reliability and drainage. Bridge #1536 received a deck replacement, a new guardrail connection, and the deteriorating gabions were replaced with new guide banks to preserve the embankment from further erosion. The project was completed in May 2014. For additional questions, contact Construction Project Manager Ericka Moore at (907) 269-4550 or at [ericka.moore@alaska.gov](mailto:ericka.moore@alaska.gov).



Culvert replacement at the "Y" off Kanakanak Road

### Kanakanak Road Resurfacing

Knik Construction has already started their second year of work on Kanakanak Road in Dillingham. The project includes major drainage improvements such as culvert replacements and repavement of portions of the road this season and into the 2015 season. For more information, contact Construction Project Manager Matt Morrow at (907) 269-0466 or [matthew.morrow@alaska.gov](mailto:matthew.morrow@alaska.gov); or Project Manager Kent Hamilton at (907) 842-2130 or [kent@emcalaska.com](mailto:kent@emcalaska.com).

## AIRPORT IMPROVEMENTS

### Tununak Airport Relocation

This federally funded project will relocate the Tununak Airport to a site approximately one mile southeast of the existing airport. Work includes construction of a 3,300 foot long runway, apron, taxiway, equipment storage buildings, airport lighting system, wind cones, power line extensions, 5,552 foot long access road, community road improvements and a bridge.

The 45% completed project is scheduled to be done by October 31, 2015. The new road has been pioneered in and the connection to the new airport site completed by installation of the new bridge. The runway embankment is partially complete. The Contractor, QAP, worked through most of the winter building embankments for the road and runway, and constructing the new bridge. QAP demobilized during the spring break up, and returned back to the project June 2, 2014 to continue work. For more information contact Matt Morrow at (907) 269-0466 or [matthew.morrow@alaska.gov](mailto:matthew.morrow@alaska.gov).



Tununak Airport access road bridge

### Kodiak Runway Extension Project Begins Construction

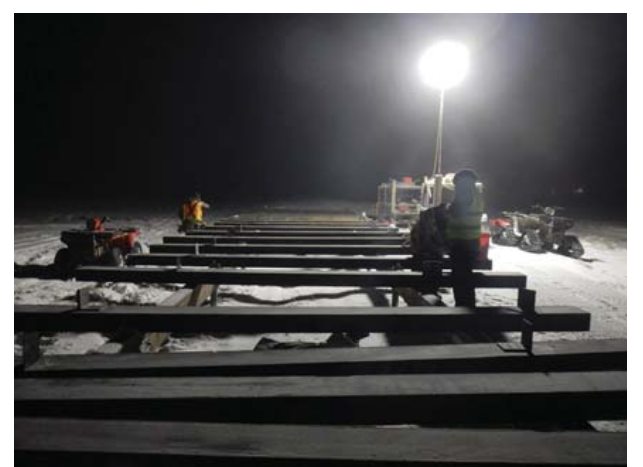
The Kodiak Runway Safety Area project will extend two runways into the ocean distances of 500 and 600 feet and repair Devil's Creek culvert. This \$58 million project is funded by national Federal Aviation Administration discretionary funding. It will begin in mid July and will involve periodic nighttime runway closures. Completion is expected in 2016. For more information contact Steve Jochens at (907) 269-0659 or [steven.jochens@alaska.gov](mailto:steven.jochens@alaska.gov).

## KIPNUK BOARDWALK



Newly installed elevated boardwalk

Elevated Boardwalk Construction enters into the final construction phase after a grueling winter construction. Over 850 pilings were installed during winter construction with wind chill temperatures dropping to as low as -30°F. The contractor, Northern Construction Service, averages 60% local hire. The crews are constructing the combined total of 3.8 miles of new "At-Grade" and "Elevated Boardwalks." These two boardwalk styles were designed to withstand the seasonal flooding and help the local residents minimize disturbance to the sensitive tundra. Final project completion is scheduled for mid-October 2014. For more information contact Laura Paul at (907) 269-0463 or [laura.paul@alaska.gov](mailto:laura.paul@alaska.gov).



Winter installation of supports to drilled pilings