



Director's Quarterly

Alaska Department of Transportation and Public Facilities

Fall Edition - Kenai Peninsula Borough

September 2012



Rob Campbell, P.E.
Central Region Director,
is a lifelong Alaskan. He
has a Bachelor's Degree
in Civil Engineering
from Oregon State
University and a M.S. in
Engineering
Management from the
University of Alaska
Anchorage. He has
worked at ADOT&PF
for more than 30 years.

DIRECTOR'S MESSAGE

Welcome to the second "Director's Quarterly" newsletter. As with our summer edition, our intent is to provide a directory of useful information sources to assist you and your staff in navigating the Department's web site for project and contact information. In this issue we will address the new highway bill, introduce you to the Planner for your area, highlight a few projects and maintenance activities, and roll out our new Public Involvement Calendar.

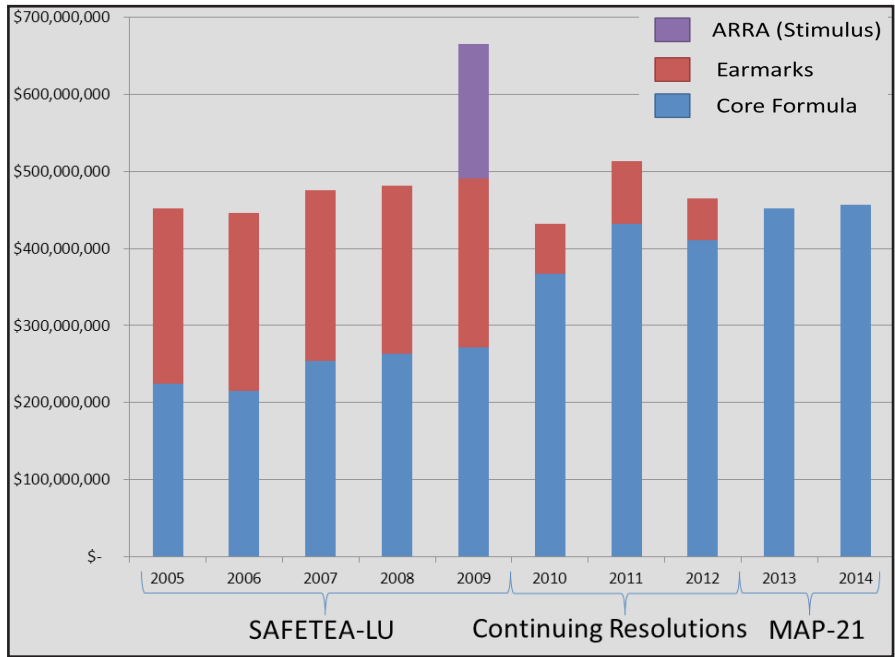
Congress recently authorized the new surface transportation bill. MAP-21 (Moving Ahead for Progress in the 21st Century Act) was passed in July, providing stable highway funding for the next two years. SAFETEA-LU, the previous bill, was extended 10 times after it expired in 2009. MAP-21 keeps the funding at about fiscal year 2012 levels, providing Alaskans with over \$5 in federal transportation funds for every dollar spent on federal gas tax, and eliminates earmarks and most discretionary programs. The bill establishes national performance goals in seven areas: 1) safety, 2) infrastructure condition, 3) congestion reduction, 4) system reliability, 5) freight movement and economic vitality, 6) environmental sustainability, and 7) reduced project delivery delays. The Department will be continuing to assess MAP-21's impacts on our programs, projects and processes, as the Federal Highway Administration produces supplementary guidance and issues federal rulemaking.

Over the next few months our construction projects will be shutting down for winter. Please refer to our Navigator and 511 links for the latest construction updates. The next newsletter (Winter Edition) will highlight some maintenance activities and introduce you to the Department's and Central Region's legislative contacts in advance of the new session.

Have a great autumn. I look forward to hearing from you.

Comments on the Newsletter
DOT.CR.Director@alaska.gov

MAP-21 provides 90% of SAFETEA-LU Transportation Funding levels to Alaska



The Seward Bridges Replacement project replacing bridges at Ptarmigan Creek, Falls Creek and Trail River has received over \$ 27 million dollars in federal "core formula" funds.

NEW

Public Involvement Calendar

In response to requests for easier access to information about upcoming public meetings and events, Central Region is proud to announce the launch of its Public Involvement Calendar. This calendar includes public meetings, open houses and any public event where Central Region staff is invited to present information (such as Chamber of Commerce or community council meetings). The calendar can be found at: <http://dot.alaska.gov/creg/calendar.shtml>

IMPORTANT LINKS

How Do I...

- Find general information about Central Region?
- Get more information about active Central Region projects?
- Locate the Central Region Public Involvement Calendar?
- Report a motor vehicle crash?

Where Can I Go To...

- Find a previous Central Region newsletter?
- Find websites for Central Region projects?
- Get MAP-21 information?
- Download a Kenai Peninsula Borough traffic map?

I am Trying to Find Information about...

- Making a reservation on the Alaska Marine Highway
- Alaska's Highway Safety Corridors
- My local Road Service Area (RSA)
- The Southwest Alaska Transportation Plan update

- <http://dot.alaska.gov/creg/>
- <http://dot.alaska.gov/projects-status/index.cfm>
- <http://dot.alaska.gov/creg/calendar.shtml>
- <http://www.dot.state.ak.us/stwdplng/accreptapp/index.shtml>

- <http://dot.alaska.gov/creg/newsletter.shtml>
- <http://www.dot.state.ak.us/stwdplng/projectinfo/central.shtml>
- <http://www.fhwa.dot.gov/map21/>
- http://www.dot.state.ak.us/stwdplng/KPB_Traffic_Map *

- <http://www.dot.state.ak.us/amhs/>
- http://www.dot.alaska.gov/comm/safety_corridors.shtml
- <http://www.borough.kenai.ak.us/service-areas/rsa-service-area>
- http://www.dowlhkm.com/projects/SWAKTP/new_website/index.html

*Link will only work in the electronic version of the Newsletter

Joselyn Biloon, Kenai Peninsula Area Planner



Joselyn Biloon is the Area Planner for the Kenai Peninsula and Kodiak Island. She has worked in community and economic development for 10 years and as an Area Planner for ADOT&PF for the last 6 years. Her projects are in urban, rural and remote communities and include airports, ports and roads. Joselyn has graduate degrees in economic anthropology and worked in the Russian Far East for many years. Before working as a Planner for ADOT&PF, Joselyn worked as Deputy Director at The American Russian Center at UAA.

As a Planner, Joselyn tracks emerging transportation needs on the Kenai Peninsula and Kodiak Island, and helps oversee the process for selecting which projects receive federal transportation funds. She can be of great assistance to the Kenai Peninsula and Kodiak communities and your constituents in providing an understanding of ADOT&PF processes and policies. She can be reached at Joselyn.Biloon@alaska.gov or at (907) 269-0508.

Sterling Highway MP 45-60 Public Meetings

Wednesday, September 12, 2012, 4:30 to 8:00 p.m. Presentation at 6:00 p.m. Cooper Landing Community Club, Bean Creek Road, Cooper Landing

Tuesday, September 18, 2012, 4:30 to 7:00 p.m. Presentation at 6:00 p.m. ADOT&PF Conference Room, 4111 Aviation Drive, Anchorage

The ADOT&PF will hold two Public Open House Meetings to present updates on the Sterling Highway MP 45–60 Supplemental Environmental Impact Statement process. Please join us to learn more about the project's status, the alternatives under consideration, proposed mitigation measures, and next steps.

For questions about the project contact: Kelly Petersen, P.E., Project Manager, at (907) 269-0546, via email at kelly.petersen@alaska.gov, or on the Web at <http://sterlinghighway.net>.

PROJECT HIGHLIGHTS

Road Improvements

Seward Highway Bridge Replacements - Construction is ongoing on the Seward Highway from Trail River to Ptarmigan Creek to replace 3 bridges and widen the shoulders. The new Ptarmigan Creek Bridge opened to traffic on August 30. The initial paving should be complete late September with the Falls Creek Bridge opening soon after. The top layer of pavement will be laid next summer. The third and last span of the Trail River Bridge is anticipated to be set early September and the new bridge will be open to traffic next spring. <http://serviceelectric.workzonecam.com/>

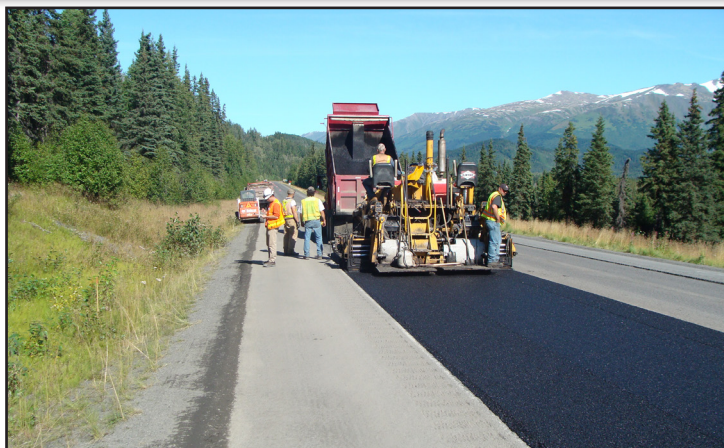
Sterling Highway: MP 37-45 Pavement Preservation - Paving should be finished mid-September 2012. This \$5 million project will also include guardrail upgrades, drainage improvements and minor bridge work. The completion of all remaining project elements is expected next summer.



ADOT&PF Salt Brine Truck



Maintenance crew resurfacing Turnagain Pass area on the Seward Highway



Sterling Highway: MP 37-45 Pavement Work

Kenai Peninsula Maintenance & Operations Information

Anti-Icing Pilot Project - ADOT&PF Maintenance staff tested a new anti-icing strategy in the Soldotna and Kenai areas last winter and will be expanding the project to Homer this winter. A salt brine (mixed with corrosion inhibitors) is applied to roads in anticipation of a major storm to prevent ice buildup, or mixed in with sand and applied to already snowy roads. This method of de-icing should result in less sanding, less environmental impacts and safer roads for the travelling public. Contact Central Region Maintenance and Operations for more details http://www.dot.state.ak.us/stwdmno/mno_cr.shtml.

Deferred Maintenance - Kenai Peninsula projects include improvements to Primrose Road near Seward to replace culverts, remove rock outcrops from ditch line and build up the road surface with additional gravel. In the Homer area, Bear Creek Drive, West Hill Road and portions of East End Road were repaved, and culverts were replaced along Greer Road with an additional gravel lift to be placed next summer. Over a mile of deteriorated pavement on the Seward Highway was repaved in Turnagain Pass.

Tire Changeover - Studded tires are allowed on all paved highways and roads north of 60 degrees North Latitude (just north of Ninilchik) and on the Sterling Highway both north and south of Ninilchik beginning **September 16th**. For all other paved roads south of 60 degrees North Latitude, studded tires are allowed beginning **October 1st**. Additional information can be found at the Alaska Department of Motor Vehicles website: <http://doa.alaska.gov/dmv/faq/faq.htm>



Greer Road culvert replacement

NAVIGATOR and 511

Your Source for Construction and Travel Information



The ALASKA NAVIGATOR website is your best source for the most up to date traffic information about state road projects actively under construction. The page consists of an interactive map that provides travelers with the latest news needed to minimize delays during the short construction season. Linked pages include a description of the project, a basic map, and project management contact information. <http://www.alaskanavigator.org/>



For a variety of travel information including weather, traffic incidents, driving conditions, and construction delays: <http://511.alaska.gov/alaska511/mappingcomponent>

Alaska Department of Transportation & Public Facilities
4111 Aviation Ave
Anchorage, Alaska 99502
907.269.0770
907.248.1573 fax
www.dot.alaska.gov

For More Information Contact:
Rick Feller
Central Region Media and Legislative Liaison
907.269.0772
rick.feller@alaska.gov